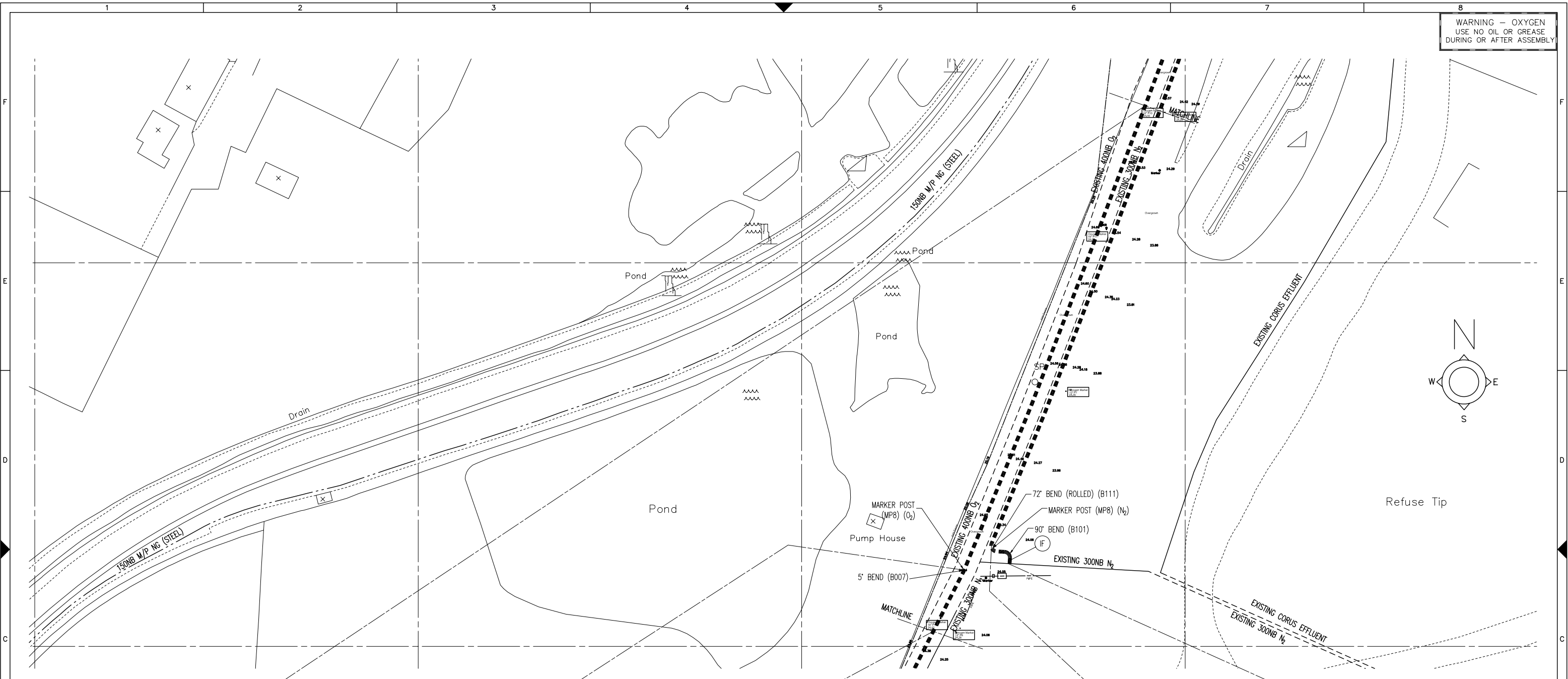


WARNING - OXYGEN
USE NO OIL OR GREASE
DURING OR AFTER ASSEMBLY



LAND OWNERSHIP	J.E.CHURCHILL				
CHAINAGE (Metres) (NTS)	560.5 (OXYGEN & NITROGEN)	690.5 (OXYGEN ONLY)	708.4 (OXYGEN ONLY)	682.5 (NITROGEN ONLY)	688.7 (NITROGEN ONLY)
GROUND LEVEL (metres)	24.600	24.600	24.600		
PIPE INVERT LEVEL (metres)	23.108 MAX	23.108 MAX	23.108 MAX		
SECTION ALONG ROUTE	GROUND LEVEL O ₂ PIPELINE 22.000 LVL				
COVER REQUIREMENTS (metres)	1.0 MIN				
BACK FILL DETAILS	SEE DRG No 50001651/50001652				
CONSTRUCTION NOTES	CONTINUED FROM Drg No 040-51-P-D0010	CONTINUE 500 O ₂ RUNNING ON LINE OF EXISTING REDUNDANT 200 N ₂ PIPELINE BETWEEN EXISTING 400 O ₂ & EXISTING 300 N ₂ . 200 N ₂ PIPE TO BE REMOVED. NEW 300 N ₂ TO CONTINUE TO RUN PARALLEL TO & TO THE EAST OF EXISTING 300 N ₂	INSTALL 5' BEND IN 500 NB O ₂ & CONTINUE ON LINE OF EXISTING REDUNDANT 200 N ₂ PIPELINE. 200 N ₂ PIPE TO BE REMOVED.	CONTINUED ON Drg No 040-51-P-D0012	INSTALL 90° BEND ROLLED 45° IN 300 N ₂ TO TURN UPWARDS & TO THE EAST. INSTALL SECOND 90° BEND ROLLED 45° TO TURN HORIZONTAL. INSTALL INSULATION FLANGE SET IN ABOVE GROUND HORIZONTAL PIPELINE SECTION - SEE DRAWING No 040-51-P-D0036.

1/ ALL WELDING TO BE CARRIED OUT IN ACCORDANCE WITH THE BOC PIPELINE STANDARDS SECTION EQF-01-04-BOC - PIPE WELDING

2/ STRAIGHT PIPE LENGTHS MAY BE LAID TO A MINIMUM 1000 METRE RADIUS.

3/ ALL BURIED PIPE SECTIONS TO BE COATED IN ACCORDANCE WITH BOC SPECIFICATION 50000746.

4/ ALL ABOVE GROUND PIPE SECTIONS TO BE PAINTED IN ACCORDANCE WITH BOC SPECIFICATION 1875176.

5/ ALL PIPE SECTIONS BELOW GROUND TO BE CATHODICALLY PROTECTED IN ACCORDANCE WITH THE BOC PIPELINE STANDARDS SECTION EQF-01-08-BOC.

6/ THE PIPE LINE IS TO BE IDENTIFIED IN ACCORDANCE WITH THE BOC PIPELINE STANDARDS SECTION EQF-01-01-BOC.

7/ ANY PARTS OF THE PIPE TRENCH EXCAVATED DEEPER THAN 1.3m WHERE ACCESS IS REQUIRE SHALL BE SHORED UP IN ACCORDANCE WITH THE CURRENT CONSTRUCTION REGULATIONS.

8/ ALL GROUND SURFACES DISTURBED BY THE CONTRACTOR ARE TO BE REINSTATED TO THEIR ORIGINAL CONDITION BY THE CONTRACTOR UNLESS INSTRUCTED OTHERWISE BY THE SUPERVISING ENGINEER. THE CONTRACTOR IS RESPONSIBLE FOR MAKING GOOD ANY DAMAGE CAUSED DURING THE INSTALLATION OF THE PIPE LINE.

9/ THE POSITION OR PRESENCE OF SERVICES & APPARATUS SHOWN ON THE DRAWING IS GIVEN IN GOOD FAITH BASED ON INFORMATION OBTAINED BY BOC FROM THE RELEVANT BODIES. THE CONTRACTOR SHALL BE FINALLY RESPONSIBLE FOR ESTABLISHING THE EXACT LOCATION OF ALL SERVICES SHOWN OR NOT SHOWN.

10/ THE CONTRACTOR IS TO SUITABLY SUPPORT ALL WIRES, CABLES, PIPES & ANY OTHER EQUIPMENT EXPOSED OR DISTURBED DURING THE COURSE OF THE WORK & REINSTATE THEM AT HIS OWN COST UPON COMPLETION OF THE WORKS.

11/ PIPE LINE IS TO BE SET OUT BY THE CONTRACTOR ON SITE PRIOR TO COMMENCING EXCAVATIONS TO DETERMINE THE POSITION OF BENDS ETC. AND TO CONFIRM ROUTE AS SHOWN.

BOC PROJECT No 87400291

Iss	Date	Drn	Chkd	Appd	D.Aut	Revision Details
3	17/01/08	N.J.H	M.F.T	M.F.	M.F.	Minor revisions to Route. Level Information & Section Along Route Added. Third Issue for Tender
2	29/10/07	N.J.H	M.F.T	M.F.	M.F.	General Revision to Suit Corus Reroute. O2 pipeline was 400 NB. Second Issue for Tender
1	09/07/07	N.J.H	M.F.T	M.F.	M.F.	First Issue for Tender

IF IN DOUBT ASK

300 N₂ & 500 O₂ PIPELINE

Title: BOC TO CORUS SCUNTHORPE
300NB N₂ & 500NB O₂ PIPE ROUTE Sht 4

Scale 1 : 500

Quality Level: V200

Date: -

Drng No: -

BOC GASES

PROJECTS & PIPELINES, BAWTRY ROAD, BRINSWORTH
ROTHERHAM S60 5NT A DIVISION OF BOC LIMITED

040-51-P-D0011

CAD DRAWING - DO NOT REVISE MANUALLY