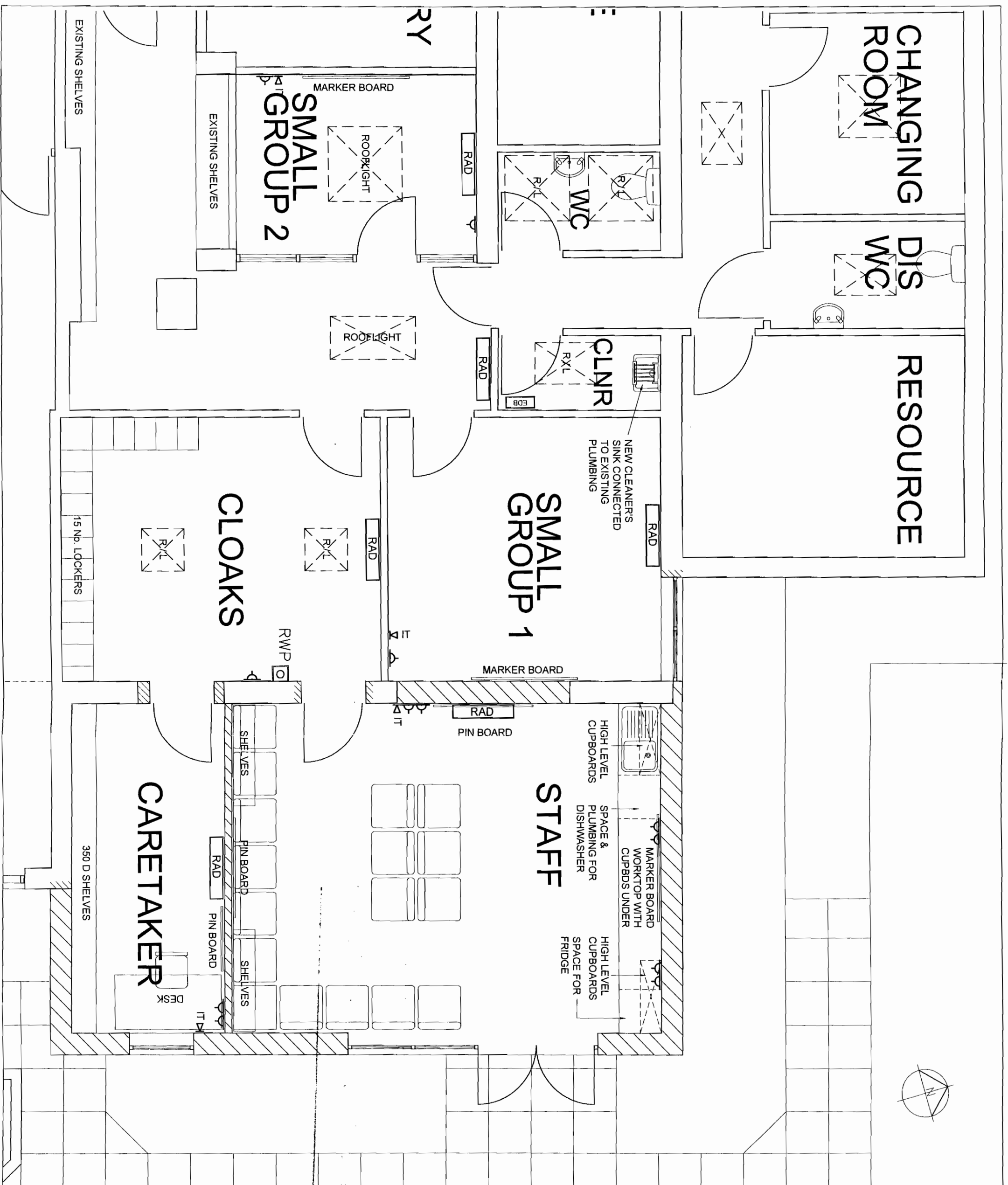




Rev	Date	Text
Rev A	20.1.06	Window to Caretaker added. Room layouts added.

LEGEND TO SERVICES SYMBOLS	
	STANDARD FITTING
	LINEAR FLUORESCENT DOUBLE
	5MW CATEGORY 2 REFLECTOR
	LINEAR FLUORESCENT INTEGRAL FITTING
	4x15W CATEGORY 2 REFLECTOR
	AS ABOVE WITH EMERGENCY BACKUP
	THORN LUX DOT 9903
	BULKHEAD FITTING, COLOUR/TYPE
	LIGHT SWITCH, 2WAY
	LIGHT SWITCH, FULL CORD
	VENTILATION FAN, WITH DUCTING
	SINGLE SWITCHED SOCKET OUTLET
	TWIN SWITCHED SOCKET OUTLET
	FUSED CONNECTION UNIT, DP SWITCHED
	IT DATA SOCKET OUTLET
	TV/FM OUTLET
	TELEPHONE OUTLET
	SMOKE DETECTOR
	HEAT DETECTOR
	SECURITY ALARM DETECTOR
	CATEGORY 5 DATA OUTLET, DOUBLE
	LOCAL WATER HEATER
	DATA/POWER TRUNKING
	FAN COIL UNIT
	EXISTING FAN COIL UNIT
	RADIATOR

DEVELOPMENT CONTROL SECTION
 09 FEB 2006
 DATE RECEIVED



Client	Diocesan Board of Education
Project	St Martins CE Primary School
Drawing	Proposed Plan
Date	October 2005
Scale	1 : 50
Dwg. no.	P293 / P04 A

The Marina Brayford Lincoln LN6 7GA
 t: 01522 546362 e: mail@place-architecture.co.uk
 place : architecture