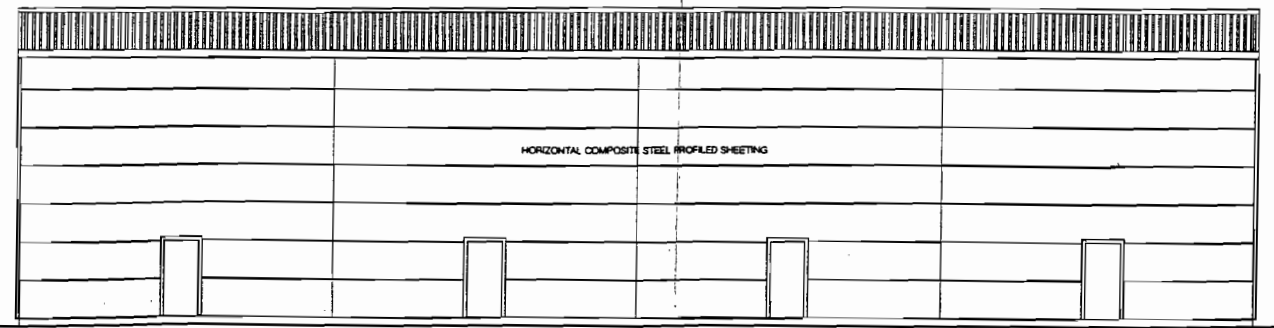


NORTH ELEVATION

1:200



SOUTH ELEVATION

1:200

ROOF PROFILED PLASTISOL COATED STEEL SHEETING
 WALLS: HORIZONTAL PLASTISOL COATED PROFILED STEEL SHEETING WITH PRESSED METAL GUTTERS/FASCIA/SOFFITES
 CONTRASTING VERTICAL PLASTISOL COATED PROFILED SHEETING
 ROLLER SHUTTER DOORS

Notes

FOUNDATIONS:
 Concrete strip footings and pad foundations min depth 750mm below ground level
 To Structural Engineers design and specification and Building Inspectors approval

GROUND FLOOR SLAB:
 150mm reinforced concrete slab with power float finish and anti-dust treatment to Structural Engineers design and specification on
 1000g cpm lapped with spc's on
 150mm sand blinded well consolidated selected hardcore
 Slab insulation - P/A P = 107.2m A = 681.03sq m P/A = 0.157
 Therefore no insulation required.

EXTERNAL WALLS:
 Kangapan KS1000 Optimo-D horizontal composite wall cladding and KS1000RW vertical composite wall cladding to front elevation or similar approved on sheeting rails to Structural Engineers design and specification to achieve a U-value of 0.25W/m²/K

140mm 7N dado blockwork wall 2.5m high. Blockwork tied to structural steelwork with ss ties with de-bonding sleeves @ 450mm vertical c/c
 Dado walls laterally restrained at the head to Structural Engineers detail

LINTELS:
 External openings through dado blockwork Naylor or similar approved ER2 on edge
 Internal openings Naylor ERT1 or similar approved

ROOF:
 Kangapan KS1000 RW or similar composite roof sheeting with integral insulation on purlins on portal frame to Structural Engineers design and specification including all necessary ties and bracing
 All to achieve a U-value of 0.25W/m²/K
 10% roof lights
 Ridge mounted Mansale system

GUTTERS AND FASCIAS:
 Plastic coated pressed metal nr gutters, fascias, and bargeboards with 75mm dia nr pipes

STRUCTURAL STEELWORK:
 Structural steelwork to Structural Engineers design and specification.

DRAINAGE:
 100mm s&wps connected to inspection chambers
 Whb wastes connected to drains via 75mm deep seal B.L.Gs
 Foul water - 100mm dia Plastic pipework min fall 1:40
 Pre-formed plastic inspection chambers with medium duty covers in pedestrian areas and heavy duty covers in vehicular areas
 connected to existing Local Authority foul water sewer in Rotherham Road
 Surface water - Rainwater pipes connected to soakaways (size and location to be agreed with the Building Inspector) via B.L.Gs and 100mm dia plastic pipework min fall 1:40

SANITARY FITTINGS:
 WCs - 100mm dia wastes, 75mm deep seal traps
 WHB - 38mm dia wastes, 75mm deep seal traps
 Urinals - 50mm dia wastes, 75mm deep seal traps
 Sinks - 50mm dia wastes, 75mm deep seal traps

EXTERNAL DOORS:
 Personnel doors to be exterior paint quality 1/2 hr fire solid core doors, rear doors fitted with emergency push bars
 front doors fitted with thumb turns

INTERNAL WALLS:
 100mm 7N blockwork, 13mm plaster to room interiors only

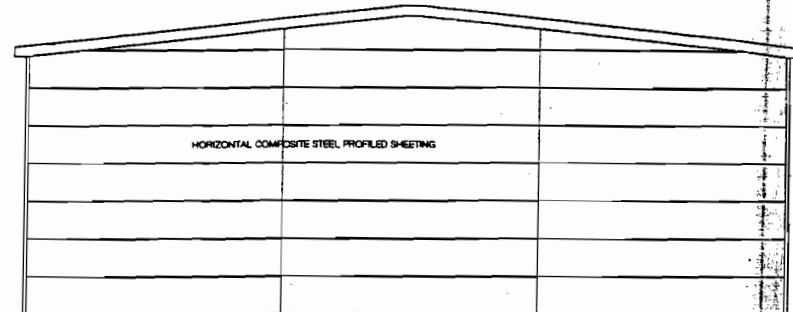
LIGHTING:
 Surface mounted fluorescent fittings and diffusers
 No. and location of emergency fittings to be agreed
 20% of light fittings to be low energy fittings

MECHANICAL AND ELECTRICAL:
DISABLED/UNISEX TOILETS: Instantaneous hot water heater,
 Cord pull alarm and emergency light and sounder. Cord pull light switch.
 Mechanical ventilation ducted to outside,
 light switch operated. Ventilation rate to be 15/s

TOILET: WC instantaneous hot water heater,
 mechanical ventilation ducted to outside, light switch operated.
 Ventilation rate to be 15/s

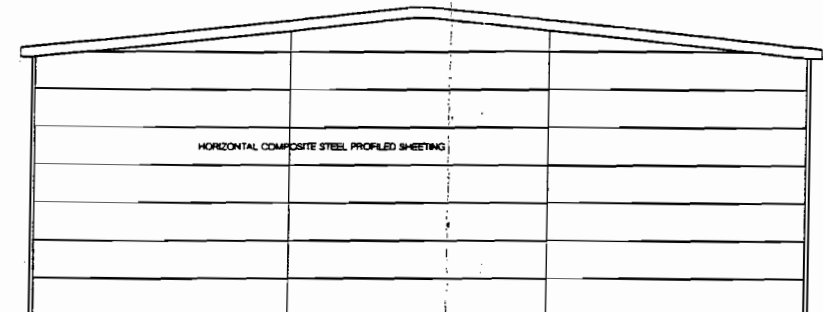
Fire alarm system to be Type 'L' and comply with BS 5839
 Call points to comply with BS 5839-Part 2
 20% of light fittings to be low energy type

INTERNAL DOORS:
 All internal doors to be FD 30s 1/2 hr fire solid core doors
 complete with intumescent strips and smoke seals
 where necessary.
 Vision panels to comply with Approved document B
 Part 9 and Appendix A table A4



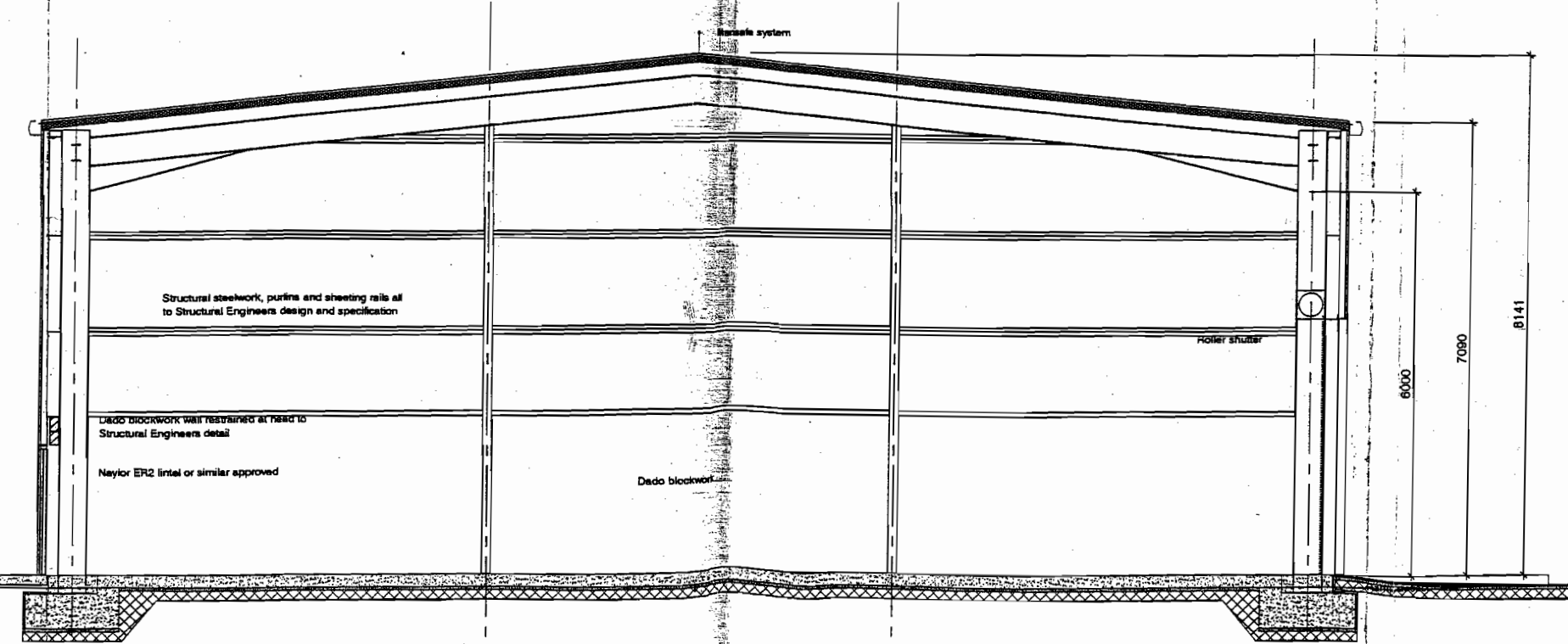
EAST ELEVATION

1:200



WEST ELEVATION

1:200



SECTION A-A scale 1:50

1:100

SCALE PRINT CONTROL SECTION
 27 NOV 2009