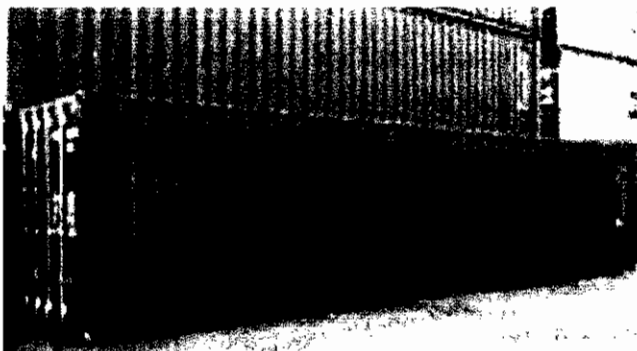


DEVELOPMENT CONTROL SECTION
- 4 MAY 2010
DAN IRVING

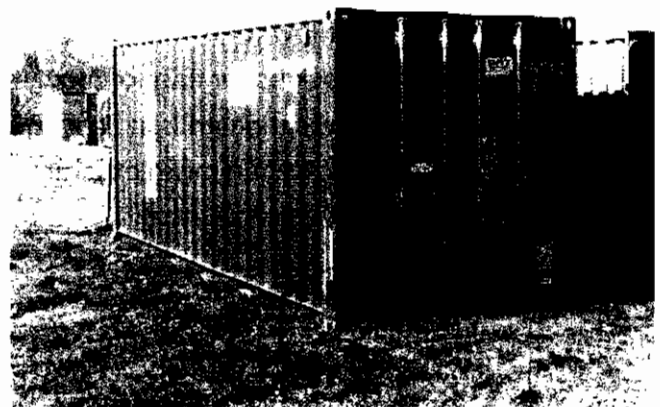
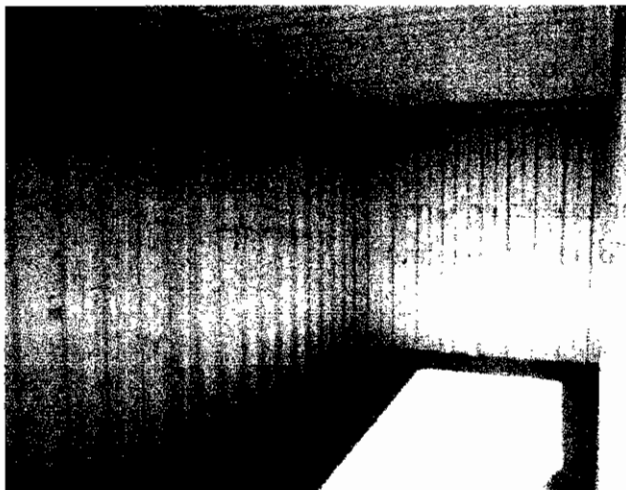


Secure Container Storage

Our containers offer secure Storage, where ever you need it. All our hire containers come complete with a lock box to protect your padlock from bolt croppers, angle grinders and other forms of unwanted attention. Containers come in a range of sizes and colours, they can also be customised to your needs.



Both a new 40ft Container and a new 8ft Container



Internal shot of a 20ft hire container, and an external shot of a 20ft hire container.

All our hire containers are less than a year old and come with a "Lock Box" fitted as standard. When you hire a container from us you can guarantee that you are getting a good quality product with the best possible service.

Paints, Dangerous Goods, and Chemical Storage

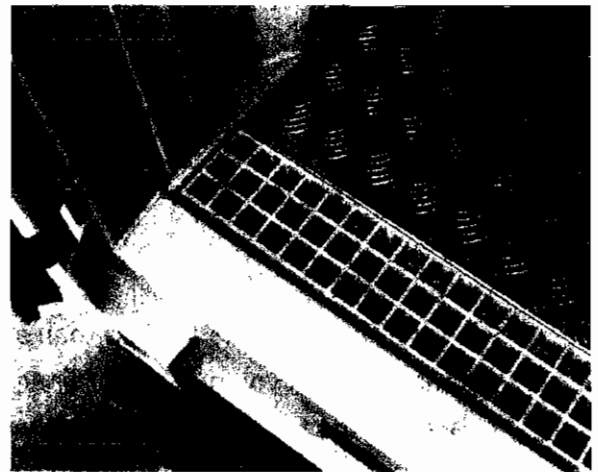
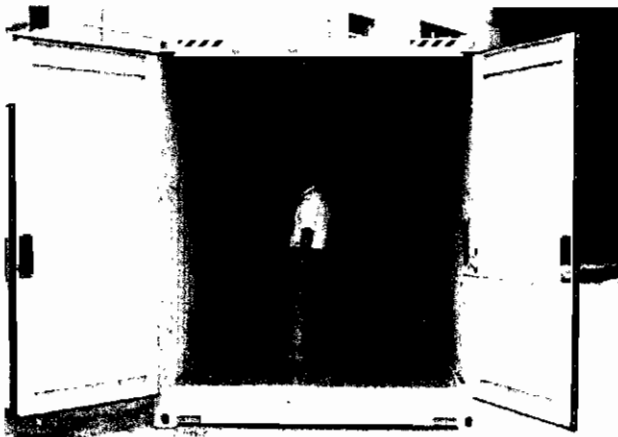
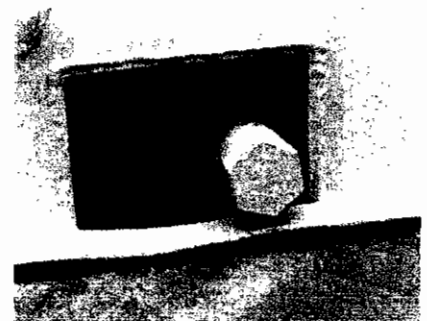
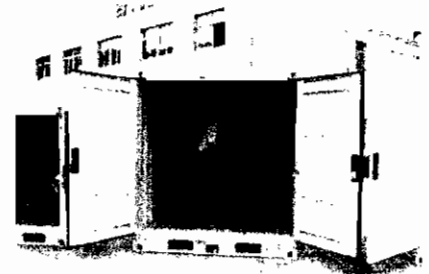
Government guidance makes it clear that pesticide, chemical and fuel storage should “protect against harm to humans, animal health and the environment.”

With the added element of concerns about security, many of our customers have recently been re-evaluating their storage facilities and have been taking steps to ensure their stores are secure and meet Health and Safety Executive (HSE) requirements.

Stores should be resistant to fire, capable of retaining leakage/spillage, dry, frost free, adequately ventilated, and secure against unauthorised access.

Features Include:

- Designed And Built to BS799 Part 5 and BS7959, and BASIS approved.
- Anti-spark, anti-slip aluminium tread plate floor.
- High – Security lock Box to enable use as secure on site storage units.
- Safety Drain valve fitted to floor sump.
- Double door access with high security lock box.
- Painted yellow for distinctive visibility.
- Fork lift pockets for ease of movement.
- 4 large ventilation grills at roof and floor level to enhance cross air flow, minimise toxic fumes build up and regulate inside air temperature.



HOME

ABOUT

ABOUT CONTAINERS

APPLICATIONS

CONTACT

ARE AN INDEPENDENT SUPPLIER OF QUALITY SHIPPING CONTAINERS, SECURE STORES & CONTAINER CABINS.

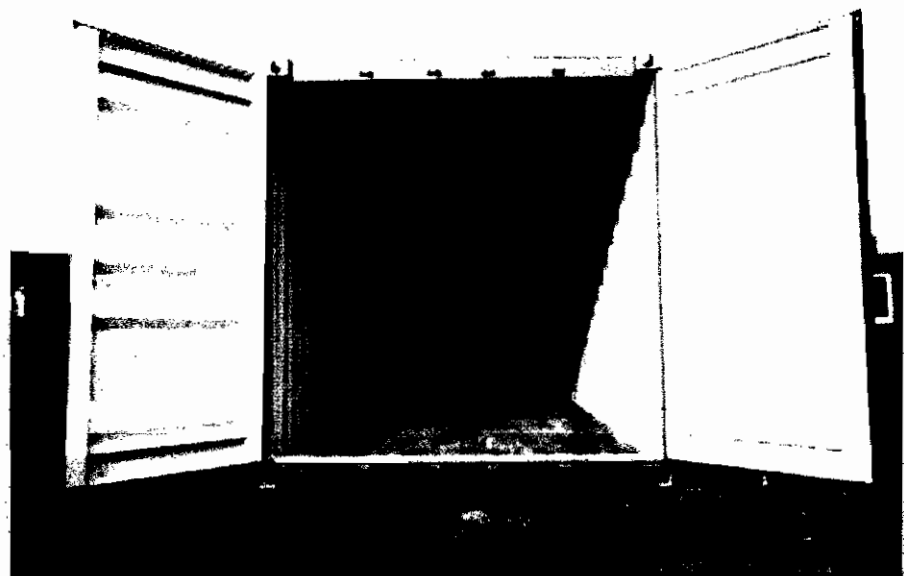
We aim to give the best service we can and we think our prices are pretty good too. We do things a little different to others, for example we'll supply you with a container any size you like up to 40ft, We're up front with prices too, as we want to give you a fair deal.

CLICK HERE FOR MORE 

20ft Standard Store

Other Products Available

- 20ft Standard Store
- 10ft Standard Store
- Container Self Storage
- 40ft Standard Store
- Small Containers
- Storage Packaging
- 20ft New Container
- 40ft New Container
- Student Storage
- 30ft Standard Store
- 16ft Standard Store
- Contact Stephen
- ***Special Offer - 20ft Reefer***
- 24ft Standard Store
- ***Offer - Ex Fleet Mul T Locks***
- Containers for Shipping
- Open Tops
- Generator
- **Special Offer - 20ft Reefer**
- Flatracks
- Reefer
- 10ft New Container
- Packaging
- Half Heights



Category: As Is

A good quality shipping container. Sizes other than standard 20ft or 40ft containers will be cut from a 40ft and will be fitted with either a newly fabricated blank end or a newly fabricated set of doors.

Product: 20ft Standard Store

A 20ft Used Standard Steel Shipping Container delivered in shipping line colours. Your container can be supplied with a lock and/or painted externally in a choice of colours. Please check the box below if you require either of these options.

Your container will be delivered on a hiab vehicle which has a crane to lift the container to the ground where you need it.

- Do you need your store supplied with a lock?
- Do you need your store painted externally?

Product Price & Availability

For more information on product pricing and availability, complete the enquiry form below and we will contact you with all the details you require.

Your Email *

Title *

Forename *

Surname *

Address 1 *

Address 2

Container Dimensions



Tare Weight	Max Gross Weight	Cubic Capacity	Door Dimensions			Internal Dimensions			Outside Dimensions			
			Height	Width	Height	Width	Height	Width	Height	Width	Length	
950kg	6,000kg	9.95cm	1.95m	2.06m	2.28m	2.11m	2.06m	2.28m	2.20m	2.27m	2.43m	8ft
1,300kg	10,160kg	15.1cm	2.28m	2.34m	2.99m	2.35m	2.39m	2.84m	2.44m	2.59m	2.99m	9ft 10in
2,230kg	30,480kg	33.1cm	2.28m	2.34m	2.39m	2.35m	2.39m	5.9m	2.44m	2.6m	6.06m	20ft
3,680kg	30,480kg	67.6cm	2.28m	2.34m	2.39m	2.35m	2.39m	12.04m	2.44m	2.6m	12.2m	40ft
2,310kg	24,000kg	32cm	2.28m	2.34m	2.39m	2.35m	2.39m	5.84m	2.44m	2.6m	6.06m	20ft
3,400kg	24,000kg	31cm	2.16m	2.11m	2.29m	2.29m	5.9m	19ft 1in	2.44m	2.20m	6.06m	20ft
3,900kg	30,480kg	76.2cm	2.58m	2.34m	2.5m	2.35m	12.04m	2.44m	2.44m	2.9m	12.2m	40ft
2,160kg	30,480kg	33cm	2.28m	2.34m	2.35m	2.35m	5.96m	2.44m	2.44m	2.6m	6.06m	20ft
3,880kg	30,480kg	67.6cm	2.28m	2.34m	2.35m	2.35m	12.04m	2.44m	2.44m	2.6m	12.2m	40ft

All Numbers Are Approximate, For More Information Please Contact One Of Our Team.

DRT Trading, 5 Oaks Farm, Winchester Road, Shedfield, Southampton, Hampshire, SO32 2HS.
 Tel: 01329 830239 Fax: 01329 833243
 Web: www.bestpricecontainers.co.uk