

Chain - 2 IN 1 SS

Site: 2235 Scunthorpe

Revision: 03

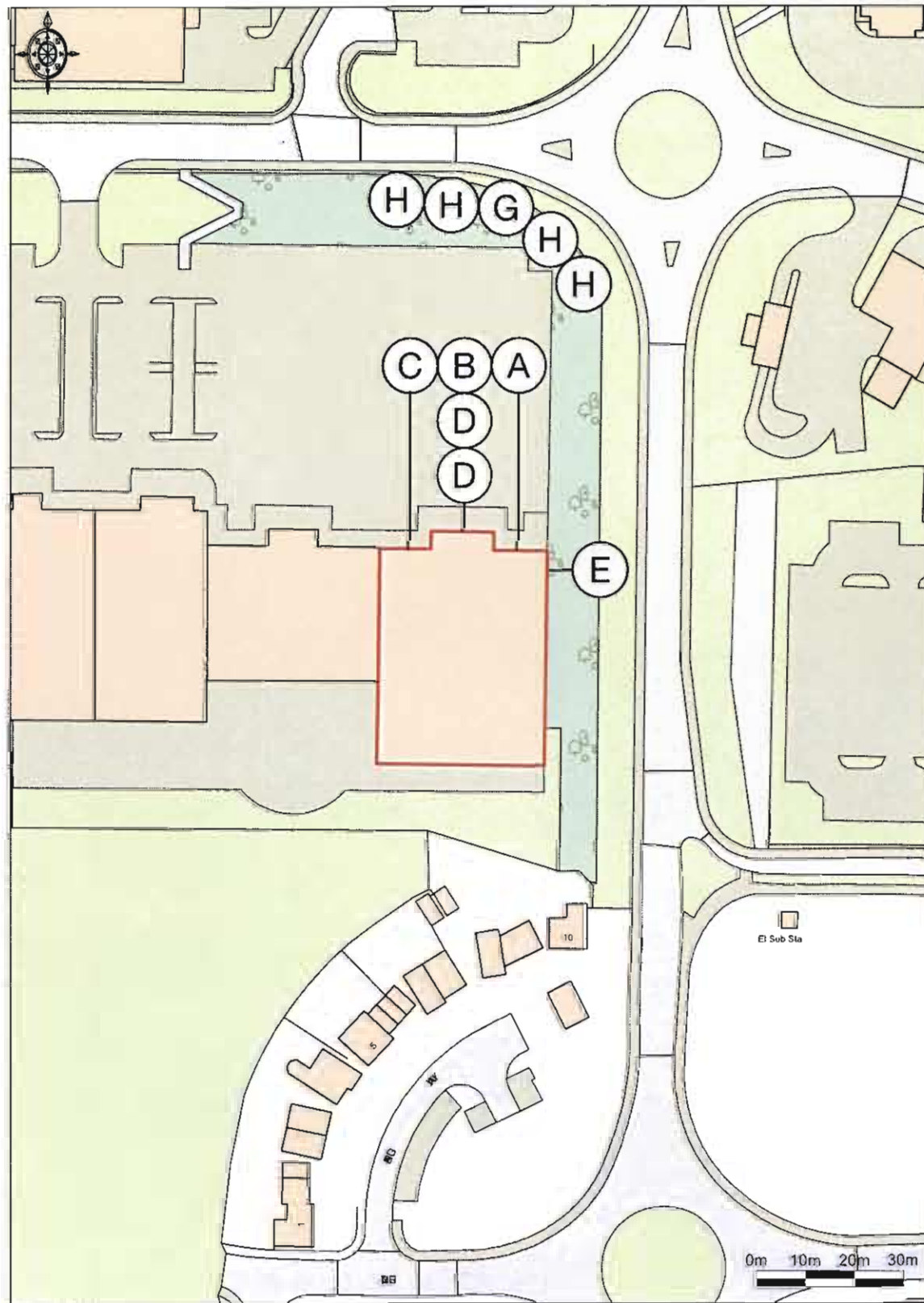
25 / 05 / 2010

DEVELOPMENT CONTROL SECTION	
27 MAY 2010	
Referenced	DATE RECEIVED

Signage Pack Supplied
by

Hawes Signs

DSG international plc



SITE PLAN

DEVELOPMENT CONTROL SECTION
 27 MAY 2010
 DATE RECEIVED
 Referred To



PROPOSED: TOTEM



NOTE:
 SIGN G
 TOTEM PANEL
 REPLACEMENT PANELS ON EXISTING SITE TOTEM
 DECORATED WITH NEW CURRYS PC WORLD BRAND IMAGE
 2400 X 1200 FOLDED A1 PANEL WITH BACK PANEL
 2 OFF REQUIRED

Signage Pack Supplied
 by



THIS DRAWING AND ANY ASSOCIATED DESIGN COPYRIGHT IS RESERVED BY DSG AND THIS DOCUMENT IS ISSUED ON CONDITION THAT IT IS NOT COPIED, AMENDED OR DISCLOSED IN ANY WAY BY THIRD PARTY UNAUTHORIZED PERSONS WITHOUT THE PRIOR CONSENT IN WRITING BY DSG.
 DO NOT SCALE FROM THIS DRAWING. ALL DIMENSIONS ARE IN MILLIMETERS UNLESS OTHERWISE STATED.
 DIMENSIONS ON STEEL AND ALL EQUIPMENT SIZES TO BE VERIFIED PRIOR TO WORK COMMENCING. THIS DRAWING SHALL BE READ AND INSTALLED IN CONJUNCTION WITH SIGNAGE PRINCIPLES, BRAND GUIDE AND STANDARD DETAILS.

Signage Approval
 Michael Dykes - Design
 John Powell - Brand
 Neil Pitts - Format

Revision

Revisions:

- 1 INITIAL PRESENTATION
- 2 AMEND AS PER MARKED UP PDF
- 3 AMEND AS PER MARKED UP PDF

12/05/2010
 25/05/2010
 25/05/2010

Client:

Currys PC World

Site:

Scunthorpe

Drawing Title:

Site Plan and Totem Details

Signage Contractor:

HAWES

Date:

25/05/2010

Status:

FOR APPROVAL

Revision:

3

Drawn By:

AF

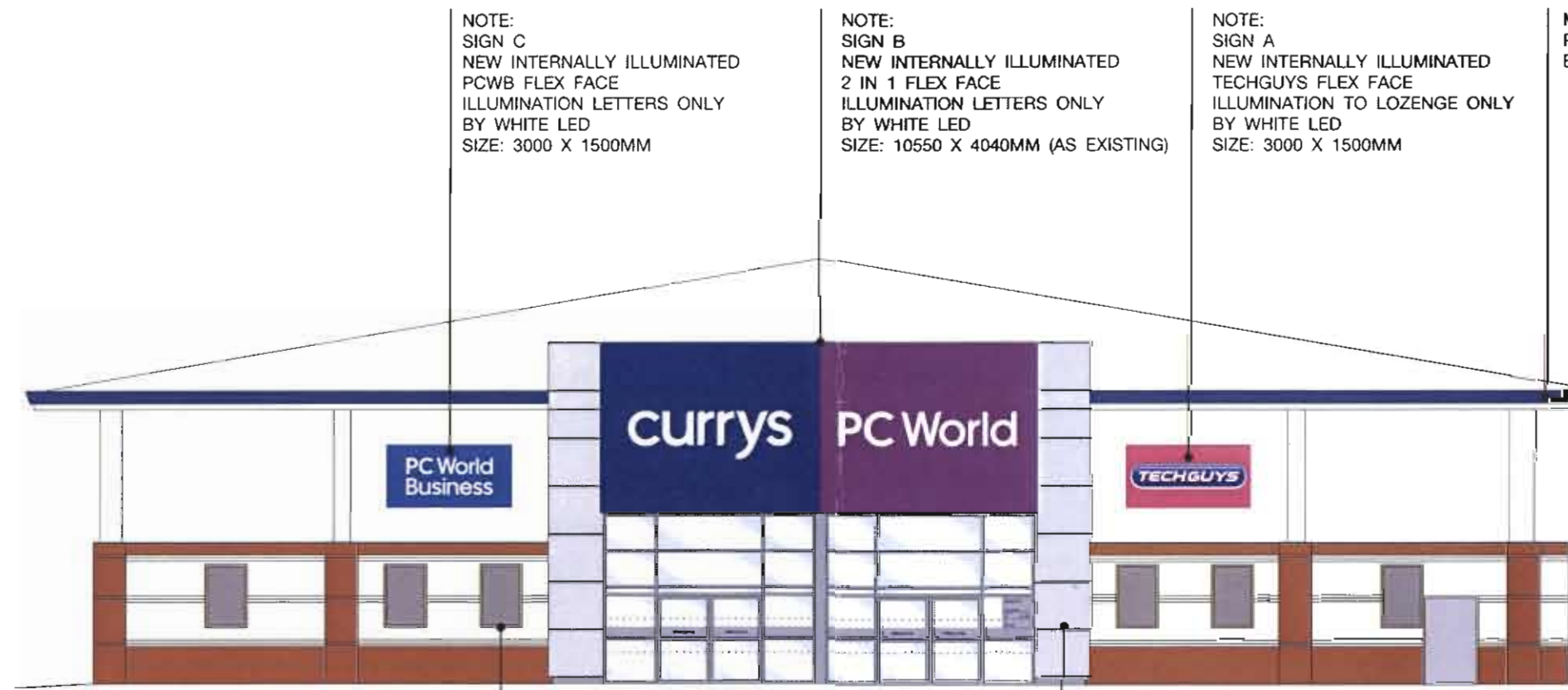
Checked By:

Scale @ A3:
 1:1000 (PLAN) &
 1:500 (TOTEM PANEL)

DSG international plc

STORE DESIGN AND DEVELOPMENT
 DIXON HOUSE
 2nd FLOOR CAMPUS
 MANAYNS AVENUE
 HERTFORDSHIRE
 MK5 1TG
 TEL: +44(0)1727 800000 FAX: +44(0)1727 204159
 Copyright © 2009 Dixons Stores Group International
 All rights reserved.

DEVELOPMENT CONTROL SECTION
 27 MAY 2010
 DATE RECEIVED
 Referred To



NOTE:
 SIGN C
 NEW INTERNALLY ILLUMINATED
 PCWB FLEX FACE
 ILLUMINATION LETTERS ONLY
 BY WHITE LED
 SIZE: 3000 X 1500MM

NOTE:
 SIGN B
 NEW INTERNALLY ILLUMINATED
 2 IN 1 FLEX FACE
 ILLUMINATION LETTERS ONLY
 BY WHITE LED
 SIZE: 10550 X 4040MM (AS EXISTING)

NOTE:
 SIGN A
 NEW INTERNALLY ILLUMINATED
 TECHGUYS FLEX FACE
 ILLUMINATION TO LOZENGE ONLY
 BY WHITE LED
 SIZE: 3000 X 1500MM

MAIN CONTRACTOR TO
 RE-DECORATE GUTTERING
 BLUE REF: RAL 5003

*SEE PAGE 4 FOR
 ENTRANCE DETAILS

1 FRONT ELEVATION
 1:150@A3

NOTE:
 SIGN D
 60 X 40 POSTER FRAMES
 NON ILLUMINATED
 6 OFF REQUIRED

MAIN CONTRACTOR TO
 RE-DECORATE ENTRANCE
 GREY REF: 7037

SIGNS ON SITE REQUIRE A FULL DETAILED SURVEY
 DIMENSION SHOWN ARE APPROX ONLY

Signage Pack Supplied
 by



THIS DRAWING AND ANY ASSOCIATED DESIGN/COPYRIGHT IS RESERVED BY DSG AND THIS DOCUMENT IS ISSUED ON CONDITION THAT IT IS NOT COPIED, AMENDED OR DISCLOSED IN ANY WAY BY OR TO ANY UNAUTHORIZED PERSONS WITHOUT THE PRIOR CONSENT IN WRITING OF DSG.
 DO NOT SCALE FROM THIS DRAWING. ALL DIMENSIONS ARE IN MILLIMETERS UNLESS OTHERWISE STATED.
 DIMENSIONS ON SITE AND ALL EQUIPMENT SIZES TO BE VERIFIED PRIOR TO WORK COMMENCING. THIS DRAWING SHALL BE READ AND INSTALLED IN CONJUNCTION WITH SIGNAGE PRINCIPLES, BRAND GUIDE AND STANDARD DETAILS

Signoff/Approval	Revision	Revisions
Michael Dykes - Design	1	INITIAL PRESENTATION
John Powell - Draft	2	AMEND AS PER MARKED UP PDF
Neil Harris - Format	3	AMEND AS PER MARKED UP PDF

Date	By
19/05/2010	
25/05/2010	
25/05/2010	

Client: Currys PC World
 Site: Scunthorpe
 Drawing Title: Store Elevations

Signage Contractor: HAWES
 Date: 25/05/2010
 Status: FOR APPROVAL
 Revision: 3
 Scale @ A3: 1:150@A3
 Drawn By: AF
 Checked By:

DSG international plc
 STORE DESIGN AND DEVELOPMENT
 260 THE CAMPUS
 MOULTON AVENUE
 WERTON SHIRE
 LEICESTERSHIRE
 LE12 7YB
 Tel: +44(0)1753 203000 Fax: +44(0)1753 204188
 Copyright © 2008 Dixon Signs Group International
 All rights reserved.

DEVELOPMENT CONTROL SECTION
 27 MAY 2010
 DATE RECEIVED
 Referred to:



MAIN CONTRACTOR TO
 RE-DECORATE GUTTERING
 BLUE REF: RAL 5003

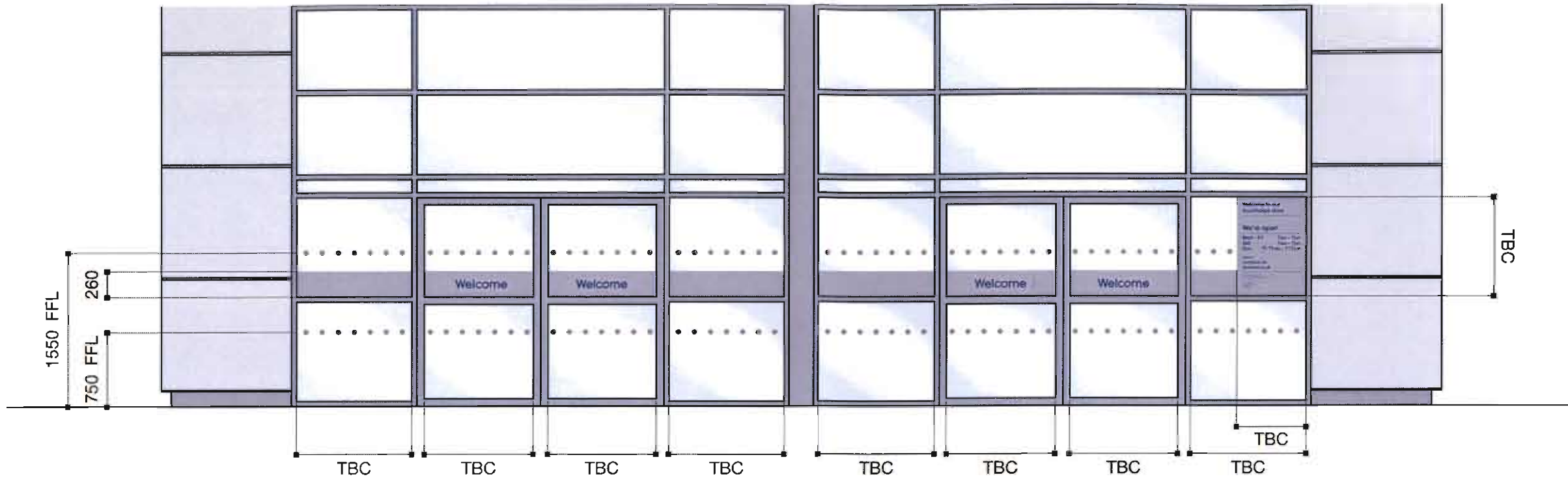
NOTE:
 SIGN E
 NEW INTERNALLY ILLUMINATED
 2 IN 1 FLEX FACE
 ILLUMINATION LETTERS ONLY
 BY WHITE LED
 SIZE: 8000 X 1870MM (AS EXISTING)



2 SIDE ELEVATION
 1:150@A3

SIGNS ON SITE REQUIRE A FULL DETAILED SURVEY
 DIMENSION SHOWN ARE APPROX ONLY

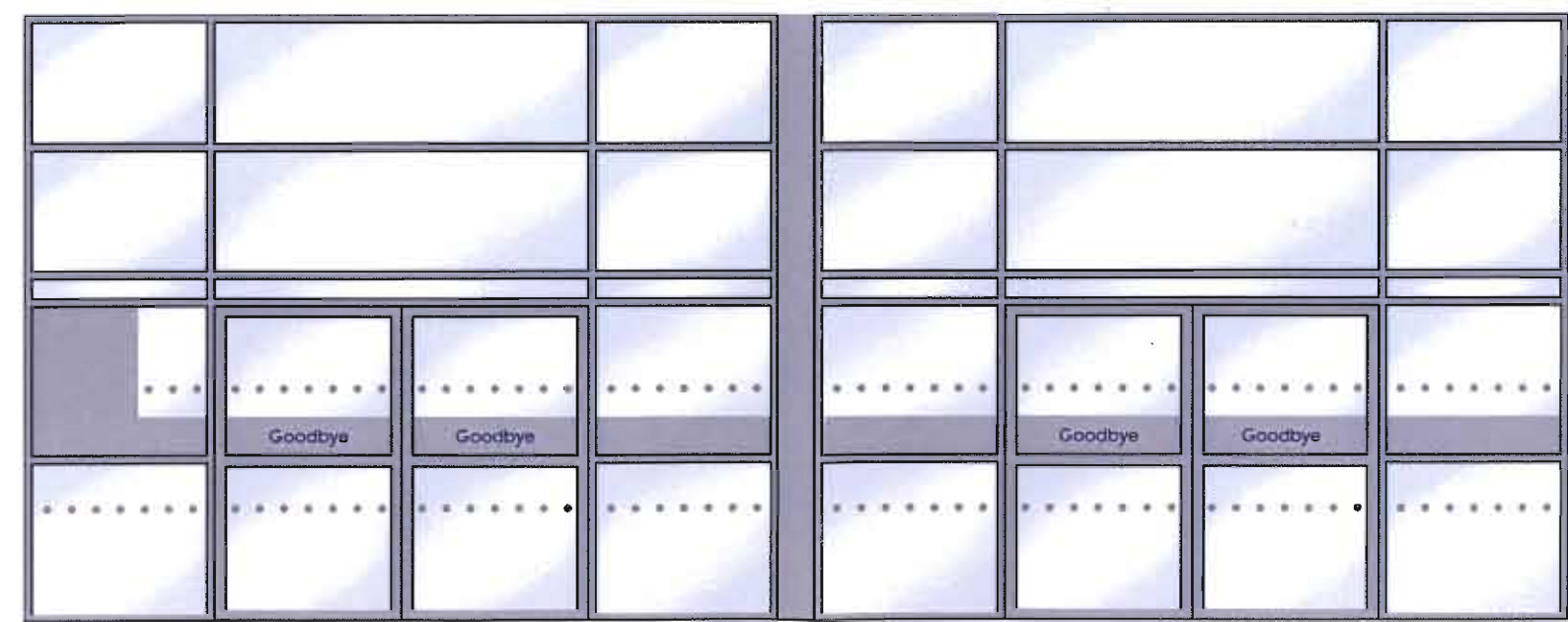
Signage Pack Supplied by 	THIS DRAWING AND ANY ASSOCIATED DESIGN COPYRIGHT IS RESERVED BY DSG AND THIS DOCUMENT IS ISSUED ON THE CONDITION THAT IT IS NOT COPIED, REPRODUCED OR DISCLOSED IN ANY WAY BY OR TO ANY UNAUTHORIZED PERSONS WITHOUT THE PRIOR CONSENT IN WRITING OF DSG. DO NOT SCALE FROM THIS DRAWING. ALL DIMENSIONS ARE IN MILLIMETERS UNLESS OTHERWISE STATED. DIMENSIONS ON SITE AND ALL EQUIPMENT SIZES TO BE VERIFIED PRIOR TO WORK COMMENCING. THIS DRAWING SHALL BE READ AND INSTALLED IN CONJUNCTION WITH SIGNAGE PRINCIPLES (BRAND) GUIDE AND STANDARD DETAILS	Signoff Approval Michael Dyles - Design John Powell - Brand Neil Hollins - Format	(Revision) 1 INITIAL PRESENTATION 2 AMEND AS PER MARKED UP PDF 3 AMEND AS PER MARKED UP PDF	(Date) 12/03/2010 29/03/2010 29/05/2010	Client: Currys PC World Site: Scunthorpe Drawing Title: Store Elevations	Signage Contractor: HAWES Date: 25/05/2010 Status: FOR APPROVAL	(Revised) 3 (Drawn By) AF (Checked By)	Scale @ A3 1:150@A3	 STORE DESIGN AND DEVELOPMENT IRONS HOUSE 200 THE CAMPUS MAYLANDS AVENUE HERTFORDSHIRE HP2 1YQ TEL: +44(0)1727 202000 FAX: +44(0)1727 204159 Copyright © 2009 Dixons Stores Group International All rights reserved.



1 ENTRANCE DETAIL: EXTERNAL VIEW
1:50@A3

NOTE:
SIGN F
DECORATED ENTRANCE DETAIL
MANIFESTATION DOTS @ 750MM & 1550MM FFL
OPENING HOURS APPROX SIZE TBC
STORE OPENING HOURS REQUIRED PRIOR
TO MANUFACTURE

DEVELOPMENT CONTROL SECTION
27 MAY 2010
DATE RECEIVED
Referred To



2 ENTRANCE DETAIL: INTERNAL VIEW
1:50@A3

Signage Pack Supplied by



THIS DRAWING AND ANY ASSOCIATED DESIGN COPYRIGHT IS RESERVED BY DSGI AND THIS DOCUMENT IS ISSUED ON CONDITION THAT IT IS NOT COPIED, AMENDED OR DISCLOSED IN ANY WAY BY OR TO ANY UNAUTHORIZED PERSONS WITHOUT THE PRIOR CONSENT IN WRITING OF DSGI.
DO NOT SCALE FROM THIS DRAWING. ALL DIMENSIONS ARE IN MILLIMETERS UNLESS OTHERWISE STATED.
DIMENSIONS ON SITE AND ALL EQUIPMENT SIZES TO BE VERIFIED PRIOR TO WORK COMMENCING. THIS DRAWING SHALL BE READ AND INSTALLED IN CONJUNCTION WITH SIGNAGE PRINCIPLES, BRAND GUIDE AND STANDARD DETAILS.

Signoff Approval	Revision	Revisions:
Michael Dykes - Design	1	INITIAL PRESENTATION
John Powell - Brand	2	AMEND AS PER MARKED UP PDF
Neil Hollins - Format	3	AMEND AS PER MARKED UP PDF

Chart	Signage Contractor	Revision	Scale @ A3
Currys PC World	HAWES	3	1:50@A3

Site:	Date:	Drawn By:	Checked By:
Scunthorpe	25/05/2010	AF	

Drawing Title:	Status:
Entrance / Exit Detail Elevations	FOR APPROVAL

DSG international plc
STORE DESIGN AND DEVELOPMENT
DIXONS HOUSE
200 THE CAMPLUS
MAYLANDS AVENUE
HERTFORDSHIRE
HP2 7TD
TEL: +44(0)1727 202000 FAX: +44(0)1727 204150
Copyright © 2009 Dixons Store Group International
All rights reserved.



PROPOSED: PHOTO 1



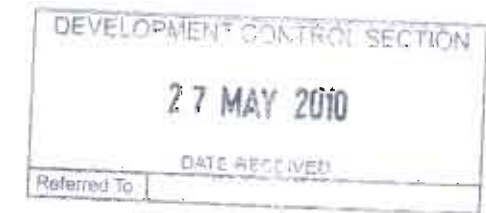
PROPOSED: PHOTO 2



PROPOSED: PHOTO 3



NOTE:
SIGN H
FLAG DETAIL
REPLACEMENT FLAG BANNERS TO EXISTING POLES
SIZES OF FLAGS TBC
4 OFF REQUIRED



Signage Pack Supplied
by



THIS DRAWING AND ANY ASSOCIATED DESIGN COPYRIGHT
RESERVED BY HAWES SIGNS AND THIS DOCUMENT IS ISSUED ON
CONDITION THAT IT IS NOT COPIED, AMENDED OR DISCLOSED
IN ANY MANNER BY OR TO ANY UNAUTHORIZED PERSONS WITHOUT
THE WRITTEN CONSENT IN WRITING OF DSG.

DO NOT SCALE FROM THIS DRAWING. ALL DIMENSIONS ARE IN
MILLIMETERS UNLESS OTHERWISE STATED.

DIMENSIONS CONSISTENT AND ALL EQUIPMENT SIZES TO BE
VERIFIED PRIOR TO WORK COMMENCING. THIS DRAWING SHALL
BE READ AND INSTALLED IN CONJUNCTION WITH SIGNAGE
PRINCIPLES, BRAND GUIDE AND STANDARD DETAILS.

Signoff Approval	Revision	Revisions:
Michael Dylis - Design	1	INITIAL PRESENTATION
John Powell - Brand	2	AMEND AS PER MARKED UP PDF
Neil Hollins - Format	3	AMEND AS PER MARKED UP PDF

Char:	12/05/2010
Currys PC World	25/05/2010
Site:	25/05/2010
Scunthorpe	
Drawing Title:	
Flags	

Signage Contractor	Revision	Scale @ A3:
HAWES	3	1:50@A3
Date:	Drawn By:	Checked By:
25/05/2010	AF	
Status:	FOR APPROVAL	

Site:	Date:	Drawn By:	Checked By:
Scunthorpe	25/05/2010	AF	

DSG international plc
STORE DESIGN AND DEVELOPMENT
DIXONS HOUSE
20 THE CAMPUS
MAYLANDS AVENUE
HERTFORD-SP10 6NS
UK
TEL: +44(0)1727 202000 FAX: +44(0)1727 204159
Copyright © 2009 DSG International Ltd. All rights reserved.



EXISTING: PHOTO 1



EXISTING: PHOTO 2



EXISTING: PHOTO 3



EXISTING: PHOTO 4

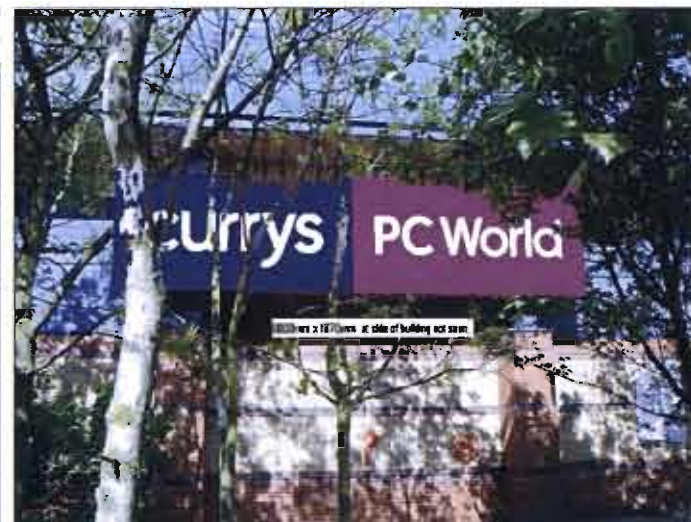
DEVELOPMENT CONTROL SECTION	
27 MAY 2010	
DATE RECEIVED	
Referred To	



PROPOSED: PHOTO 1



PROPOSED: PHOTO 2



PROPOSED: PHOTO 3



PROPOSED: PHOTO 4

Signage Pack Supplied by



THIS DRAWING AND ANY ASSOCIATED DESIGN COPYRIGHT IS RESERVED BY DSG AND THIS DOCUMENT IS ISSUED ON CONDITION THAT IT IS NOT COPIED, AMENDED OR DISCLOSED IN ANY WAY BY OR TO ANY UNAUTHORIZED PERSONS WITHOUT THE PRIOR CONSENT IN WRITING OF DSG.
DO NOT SCALE FROM THIS DRAWING. ALL DIMENSIONS ARE IN MILLIMETERS UNLESS OTHERWISE STATED.
DIMENSIONS ON SITE AND ALL EQUIPMENT SIZES TO BE VERIFIED PRIOR TO WORK COMMENCING. THIS DRAWING SHALL BE READ AND INSTALLED IN CONJUNCTION WITH SIGNAGE PRINCIPLES, BRAND GUIDE AND STANDARD DETAILS.

Signoff Approval	Revision	Revisions:
Michael Dykes - Design		1 INITIAL PRESENTATION
John Powell - Brand		2 AMEND AS PER MARKED UP PDF
Neil Hollins - Format		3 AMEND AS PER MARKED UP PDF

Date	12/05/2010
Date	25/05/2010
Date	25/05/2010

Chain	Currys PC World
Site	Scunthorpe
Drawing Title	Site Photos and Visuals

Signage Contractor	HAWES	Revision	3	Scale	9:A3
Date	25/05/2010	Drawn By	AF	Checked By	NTS@A3
Status	FOR APPROVAL				

DSG international plc

STORE DESIGN AND DEVELOPMENT
 DIXONS HOUSE
 200 THE CAMPUS
 MAYLANDS AVENUE
 HERTFORDSHIRE
 HP2 7TG
 TEL: +44(0)1727 202000 FAX: +44(0)1727 204159
 Copyright © 2009 Dixons Stores Group International
 All rights reserved.