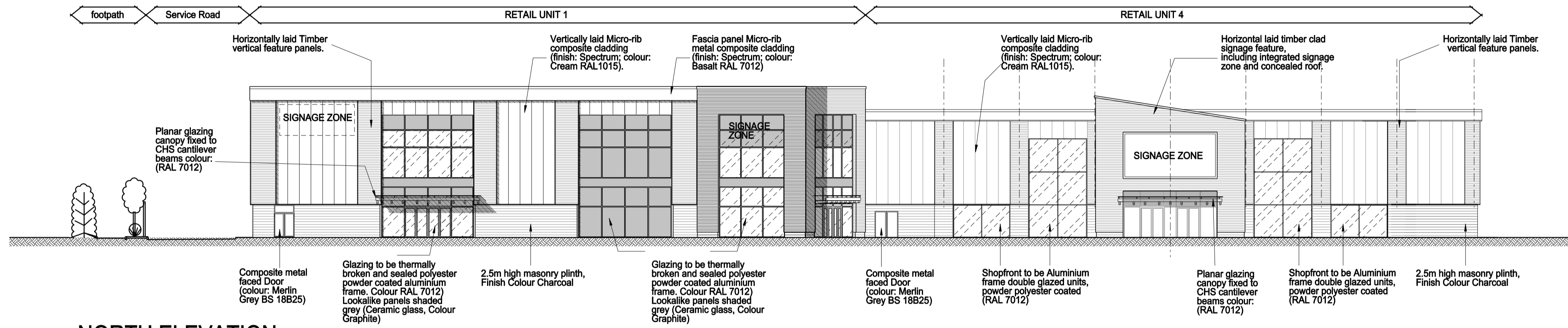
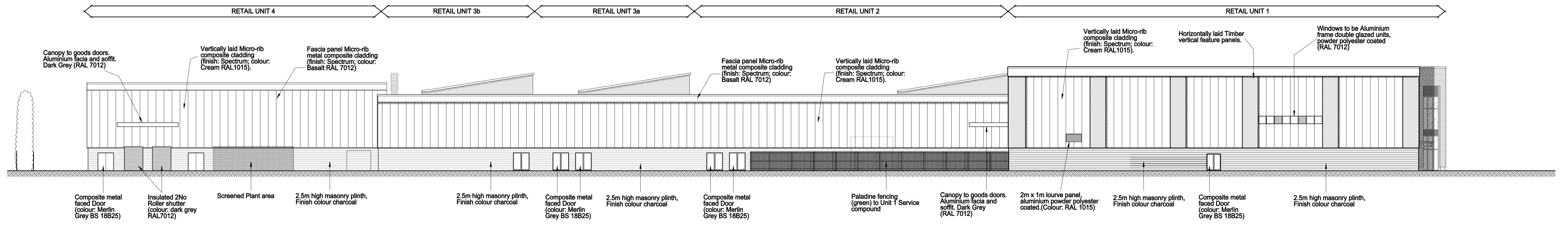


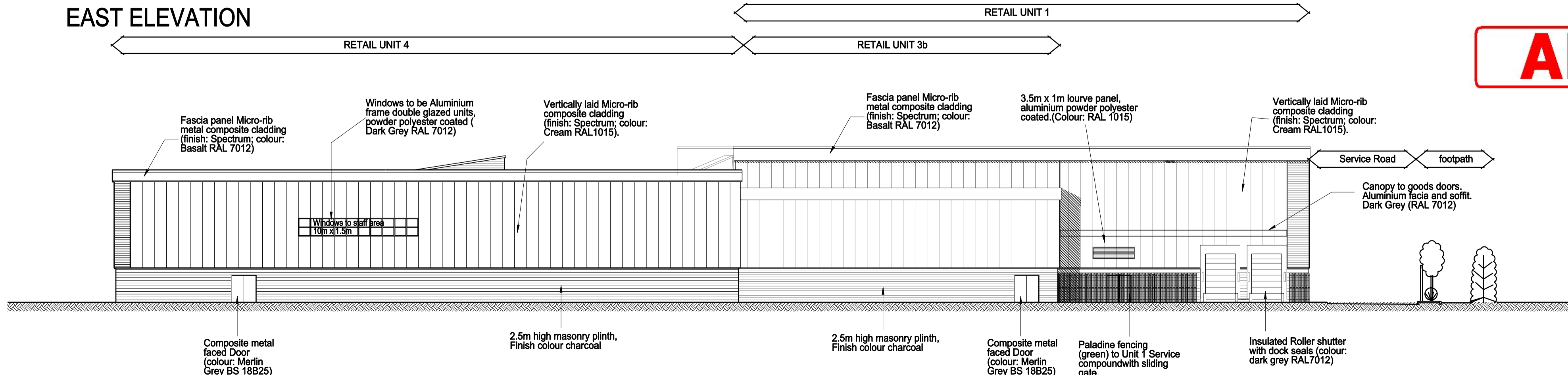
**WEST ELEVATION**



**NORTH ELEVATION**



**EAST ELEVATION**



**SOUTH ELEVATION**

**Material Specification**

Roof: trapezoidal metal composite cladding (finish: 'XL Forte', colour: Goosewing grey, BS10A05)

Cladding to main elevations: Vertically laid Micro-rib composite cladding (finish: Spectrum; colour: Cream RAL1015). Cladding to be broken up with Timber vertical panels as shown on elevations.

Fascia panel to main elevations: Micro-rib metal composite cladding (finish: Spectrum; colour: Basalt RAL 7012)

Capping : Aluminium powder polyester coated capping 250mm deep, (finish: Spectrum; colour: Basalt RAL7012)

Signage Feature: Timber cladding to steel frame, including integrated signage zone and concealed roof. Signage feature to be raised on Masonry plinth to match walls.

Facing blockwork : 2.5m high masonry plinth, weathered, finished with charcoal finish. Bucket handle joint, Mortar colour to match the masonry.

Doors: composite metal faced, polyester powder coat finish (colour: dark grey BS 18B25)

Curtain walling and glazed screens: Curtain wall glazing system Double glazed units to comprise of an outer panel of clear (Neutral) solar control glazing, with inner leaf to be treated with low 'e' coating with min emissivity of 0.15, with a minimum U Value for the whole unit to comply with SSEM calculation, and 'look-a-like' panels (shown shaded) complete with compatible double doors, system finished in polyester powder coat frames (colour: RAL 7012).

Windows to be Aluminium frame double glazed units, powder polyester coated (RAL 7012)

Canopy Unit 1 + 4 : Planar glazing fixed to CHS cantilever beams colour: (RAL 7012)

**AMENDED**

- Revisions
1. First Issue DJB 15.08.11
  2. General Amendments 17.08.11
  3. Unit 4+5 amended to 1 unit, door layout amended, windows added to the rear of unit 5, DJB 31.10.11
  4. Revised Planning application drawings .DJB 03.11.11

PROJECT:  
**DONCASTER ROAD  
GLANFORD RETAIL PARK  
SCUNTHORPE**

CLIENT:  
**SIMONS**

DRAWING TITLE:  
**PROPOSED ELEVATIONS**

DATE: **AUGUST 2011** DRAWN: **SJD** PROJECT LEADER: **DJB**

SCALE: **1:250** DRAWING NO: **5295/A/1/200-4**

991 Doddington Road  
Lincoln, East Midlands LN6 3AA  
Tel: 01522 505000 - Fax 01522 505500  
**www.simonsgroup.com**