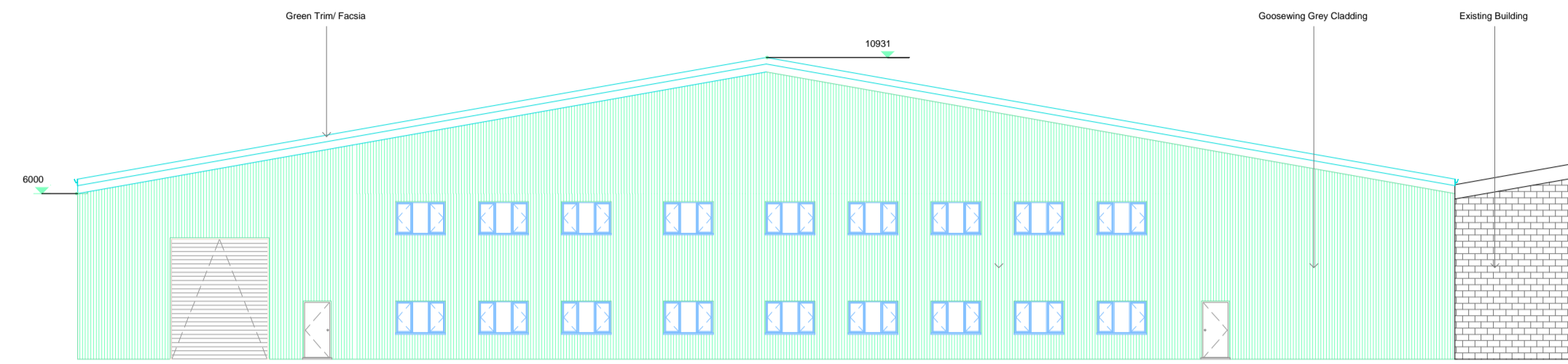
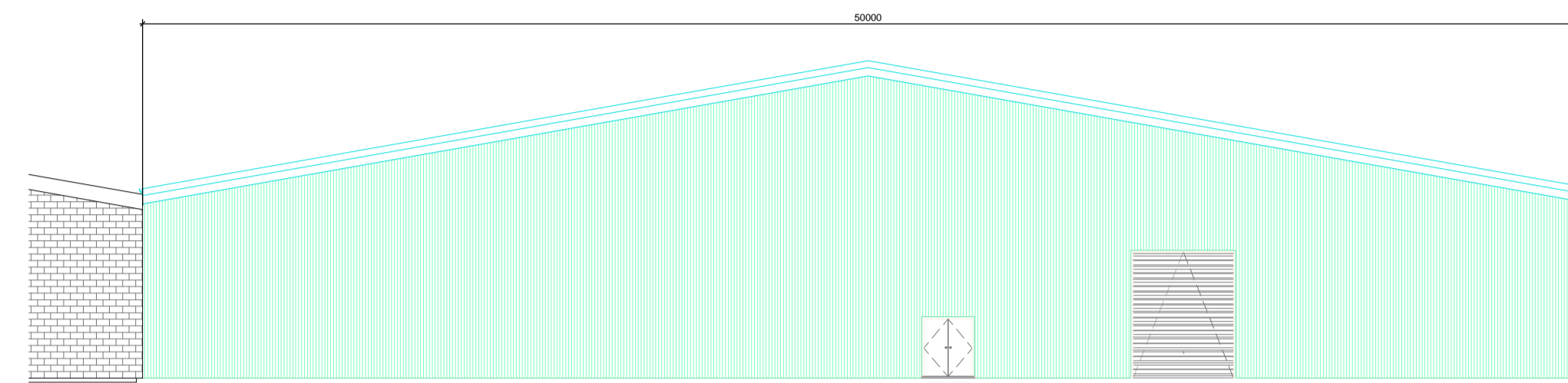


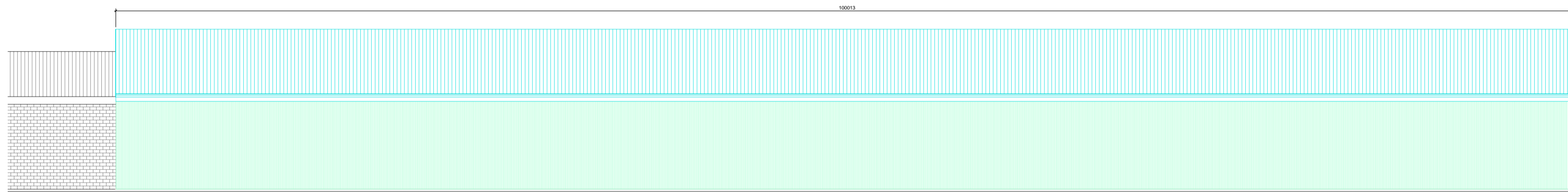
© C.R. Parrott Consultants Limited
 All dimensions & details given on this drawing are to be checked on site by the contractor prior to works starting. Any discrepancies to be notified to C.R. Parrott Consultants Limited as soon as possible.



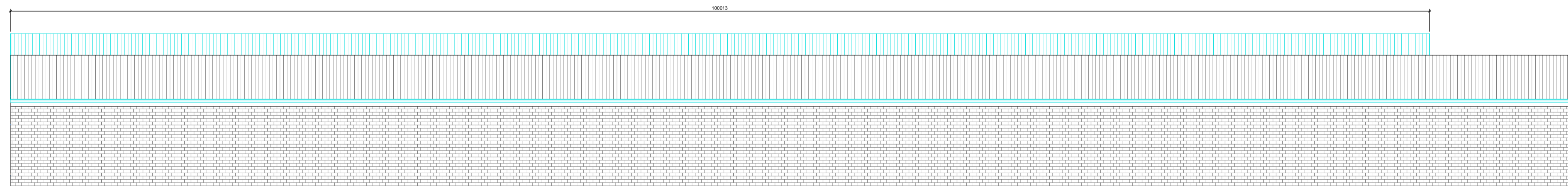
EAST ELEVATION
 1 : 200




WEST ELEVATION
 1 : 200



SOUTH ELEVATION
 1 : 200



NORTH ELEVATION
 1 : 200

A	22.07.14	JS	Revised for relocated warehouse	Chk
	Date :	Drawn	Revision	
				
Architecture Structural Engineering Project Management Prince House, Queensway Court, Arkwright Way, Scunthorpe T. 01724 278155 F. 01724 278166 E. info@crparrott.co.uk <small>© This drawing is the property of C.R. Parrott Consultants limited and must not be copied or reproduced either in whole or in part</small>				
Substructure and External Works, Design and Build, Howarth Timber, New Holland Proposed Elevations				
Drawn :	CW	Date :	02.12.13	Scale : 1:200@A1
Checked :	JRH	Drawing No.	CP-6970-21	Revision :
Approved :	JRH			A