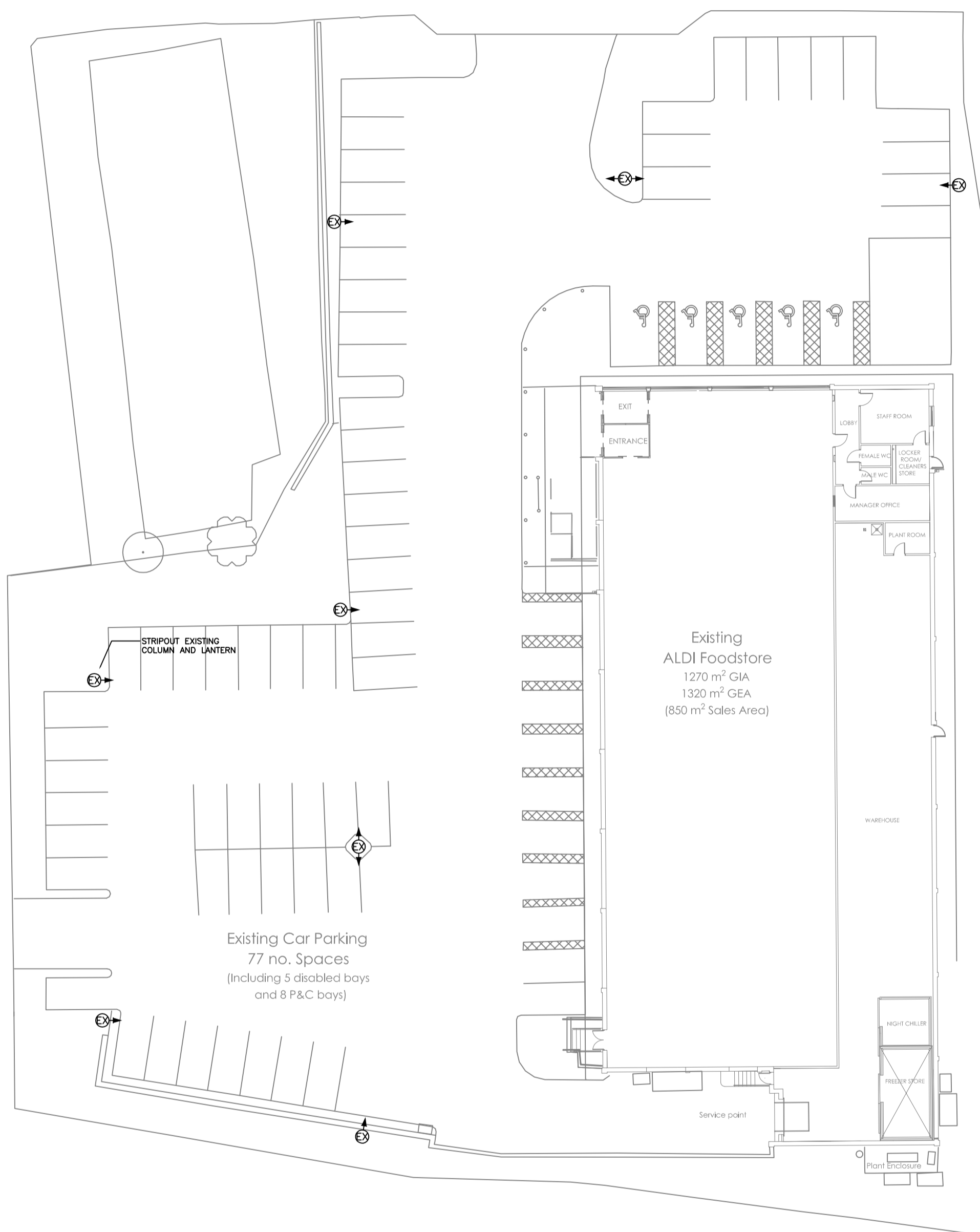
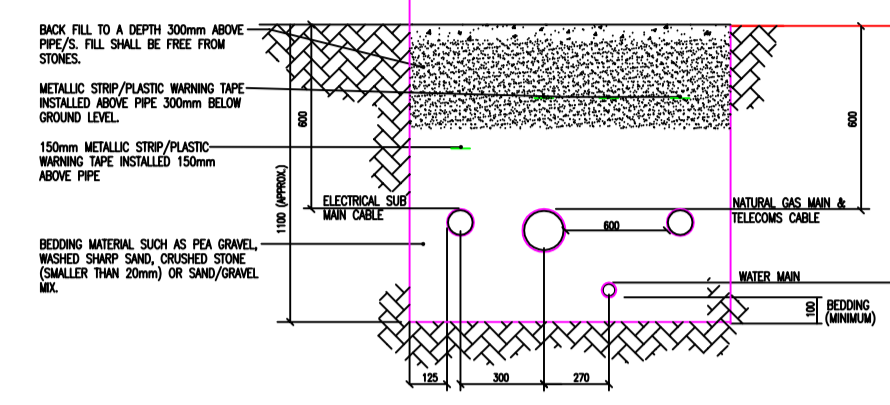
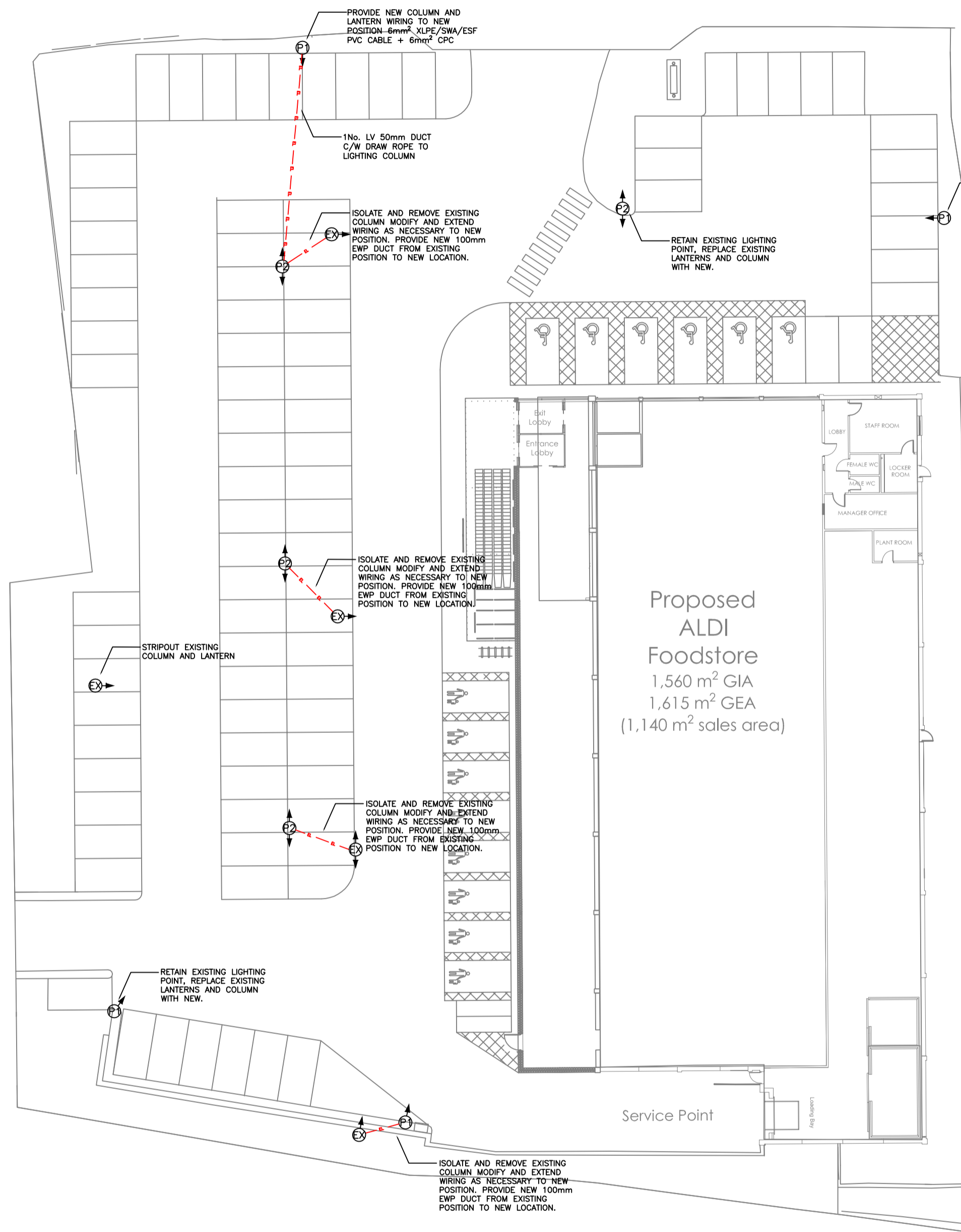


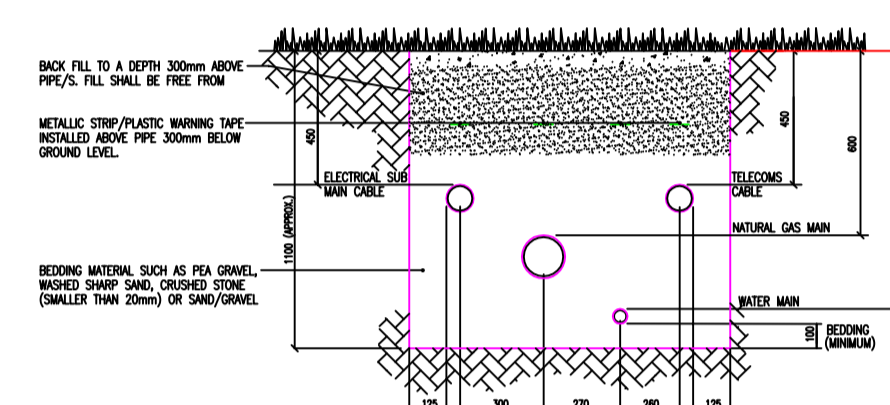
EXISTING LAYOUT



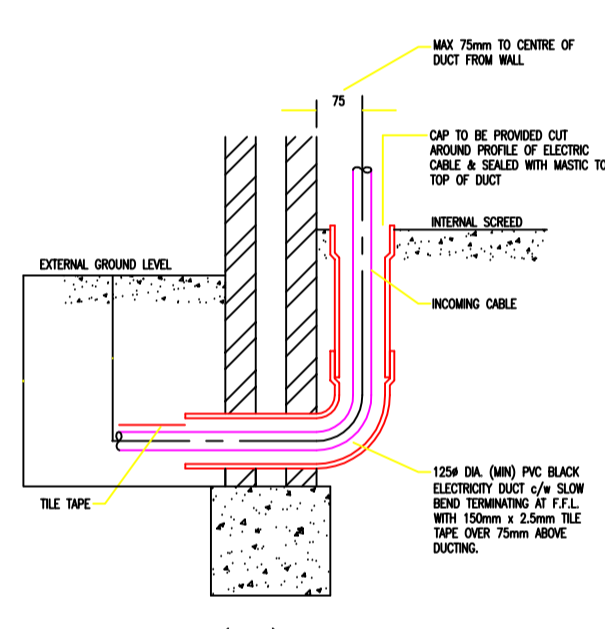
PROPOSED LAYOUT



TYPICAL DETAIL OF UNDERGROUND SERVICES TRENCH WITHIN ROADWAY / CARRAGEWAY (NTS)



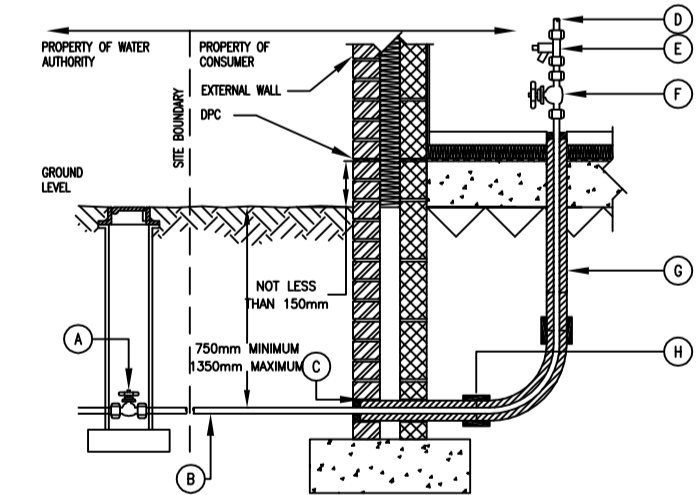
TYPICAL DETAIL OF UNDERGROUND SERVICES TRENCH WITHIN FOOTPATH (NTS)



TYPICAL DETAIL OF (NPG) CABLE DUCT BUILDING ENTRY (NTS)

INCOMING WATER MAIN LEGEND

- ① LOCK WATER AUTHORITY STOP VALVE AND METE
- ② SERVICE OR SUPPLY PIPE SERVICE PIPE MUST NOT PASS THROUGH A DRAINAGE REJECTION CHANNEL
- ③ END OF PROTECTIVE PIPE TO BE SEALED WITH PLASTIC OR WOOD
- ④ SERVICE PIPE OR DRAIN MAIN TO STORAGE CISTERN & DRINKING WATER TAPS
- ⑤ DRAIN DOWN VALVE
- ⑥ STOP VALVE
- ⑦ LAST JOINT OF SERVICE PIPE TO BE ISOLATED - PROTECTIVE PIPE TO BE SEALED WITH WOOD
- ⑧ PROTECTIVE SLAB FOR SERVICE PIPE UNDER BEARING
- ⑨ IF ANY PIPES ARE TO PASS UNDER FOUNDATIONS SHOULD BE ENCASED IN MASS CONCRETE



TYPICAL INCOMING WATER MAIN DETAIL (NTS)

Schedule

Symbol	QTY	Description	Lamp
⊕	4	FACTOR SMALL c/w Asymmetric Optic on 6m Conical Column	LED C.9000LM-4000K
⊕	4	2 x FACTOR SMALL c/w Asymmetric Optic on 6m Conical Column	LED C.9000LM-4000K
⊕		EXISTING COLUMNS TO BE REMOVED	

NOTES
THIS IS A DESIGN DRAWING NOT AN INSTALLATION DRAWING. DIMENSIONS SHOULD NOT BE SCALED. DIMENSIONS TO BE CHECKED BEFORE PRODUCTION OF CRITICAL MANUFACTURING DRAWINGS. THE DRAWING IS COPYRIGHT AND NO PART MAY BE REPRODUCED WITHOUT WRITTEN CONSENT.

NOTES:
1. EXTERIOR CABLES / DUCTS TO BE Laid AT A MINIMUM DEPTH OF 400mm IN SLOTTED / FOOTPRINTS AND 500mm MINIMUM DEPTH WITHIN CARRIAGE / ROADWAY AREAS. ACCESS TO BE COMPLETED WITH DRAIN ROLES.
2. THE CAR PARK LIGHTING COLUMNS SHALL BE MOUNTED IN THE POSITIONS SHOWN IN LINE WITH THE CAR PARK DESIGN LINES AND SHALL BE POSITIONED SUCH THAT THE ACCESS DOOR FACES THE CAR PARK KEYS.
3. WHERE POSSIBLE THE LIGHTING COLUMNS SHALL BE SET BACK A DISTANCE OF 1.5m FROM THE KEYS LINE. THE MINIMUM RECOMMENDED DISTANCE FROM THE KEYS LINE IS 500mm. IF THE MINIMUM GAP CANNOT BE MAINTAINED THE MAIN CONTRACTOR / LANDSCAPE ARCHITECT SHALL PRIOR TO SETTING OUT/INSTALLATION, OBTAIN CLARIFICATION OF THE POSITIONS FROM THE ENGINEER / ARCHITECT.
4. SIGN IN PITS SHALL BE PROVIDED IN ACCORDANCE WITH THE FOLLOWING:
• AT EACH SIGNIFICANT CHANGE OF DIRECTION.
• AT INTERVALS NOT EXCEEDING 200m IN STRAIGHT RUNS.
• AT EACH CHANGE IN DEPTH I.E. EACH SIDE OF ROAD CROSSING.
• WHERE OTHERWISE REQUIRED TO FACILITATE DRAWING PK.

5. FOR WALL MOUNTED / BUILDING MOUNTED LIGHTING PLEASE REFER TO LIGHTING & EMERGENCY LIGHTING LAYOUT _S01_.

6. CAR PARK LIGHTING & SIGNAGE SET TO ACTIVATE 07:00-23:00 MONDAY TO SATURDAY AND 08:30-17:00 SUNDAY. THE PHOTOCELL SHALL INHIBIT THE ON COMMAND.

7. BUILDING MOUNTED LIGHTING CONTROLLED VIA PHOTOCELL ONLY THEREON OR IN ALL HOURS OF DARKNESS.

8. CAR PARK LIGHTING & SIGNAGE DEACTIVATED BY EXISTING LUX SENSORS WHEN OUTSIDE LIGHT LEVEL RISES ABOVE 1400 LUX.

9. WALL MOUNTED LIGHTING TO BE WIPED FROM EXISTING LOCAL EXTERNAL LIGHTING CIRCUITS.

- PROPOSED INCOMING B.T.
- B.T.'S OFF SITE CABLING
- PROPOSED INCOMING WATER
- OFF SITE WATER MAIN/WORKS
- GAS MAIN
- PROPOSED INCOMING ELECTRICITY
- DRINK OFF SITE CHASING/WORKS
- PROPOSED 100mm ALUMINUM DUCT OR DELETED ON DRAWING
- PROPOSED 100mm ALUMINUM DUCT DEDICATED FOR PARKING EYE
- PROPOSED 100mm ALUMINUM DUCT DEDICATED FOR PETROL INTERCEPTOR
- POST ILLUMINATED SIGN
- DRAW PIT
- EXTERNAL LIGHTING PHOTOCELL

Project: ASHBY SCUNTHORPE

Client: ALDI

Scale: 1:200@A0

Engineer: JR

Date: APR 17

Drawing Number: 4282_XX_00_DR_E_801

Page: P1