

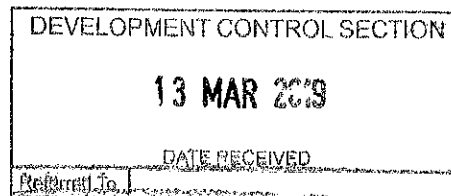
Link-Cold Refrigeration & Air Conditioning Co. Ltd.

Unit 9, Sunningdale Rd, South Park Industrial Estate
SCUNTHORPE, North Lincolnshire DN17 2TY
Telephone: 01724-876400 Facsimile: 01724-271921
www.link-cold.co.uk Company Reg. No. 04151640

Our Ref: MQ1011-ORV.PM.19

1st March 2019

Old Registry Vets
92 Oswald Road
Scunthorpe
North Lincolnshire
DN15 7PA



FAO: Mr Simon Maddy

Dear Sir

Thank you for your valued enquiry with regards to the supply and installation of air conditioning and for your courtesy during our recent site survey.

Air conditioning is required to provide heating and cooling to the following areas

- | | |
|------------------------|---|
| a) Waiting Room | Approximate room size 47.5m ² |
| b) Dispensary | Approximate room size 9m ² |
| c) Consultation Room 1 | Approximate room size 13.26m ² |
| d) Consultation Room 2 | Approximate room size 7.5m ² |
| e) Consultation Room 3 | Approximate room size 7.5m ² |
| f) Kennel Area | Approximate room size 11.84m ² |
| g) Operating Room | Approximate room size 16.8m ² |
| h) Cattery Area | Approximate room size 10.83m ² |
| i) Prep Room | Approximate room size 37.8m ² |

Equipment Selection

For this quotation we have selected Panasonic Air Conditioning equipment which, due the phase out of refrigerant R410A by the year 2025 (minimum), will operate on the new generation of refrigerant R32 which due to its low GWP is both environmentally friendly and energy efficient.

Furthermore as Link-Cold Refrigeration and Air Conditioning Company Limited are recognised as a Panasonic Premier Solutions Partner we are able to offer a 7 year warranty on all Panasonic equipment. This warranty is subject to a Pre-planned Preventative Maintenance Contract been in place with a Panasonic Premier Solutions Partner.

The first year maintenance agreement is free and includes 2 x six monthly maintenance visits and F-Gas leak tests. A second year maintenance contract proposal would be issued prior to the equipment reaching 1 year old and then subsequently on each anniversary of the installation date.

The current cost of a Pre-planned Preventative Maintenance Contract to cover all of the nine items of equipment in our proposal would be £621.00 +VAT based upon our 2019 prices.

Furthermore unlike many suppliers without service capabilities, who solely rely upon Manufacturers for warranty terms and repairs, all equipment supplied by Link-Cold is covered by our in house *24 hour emergency call-out service*.

Upon placing an order a 50% payment as deposit would be required and the remaining 50% payment to made upon completion of the installation.

This quotation is valid for a period of 30 days. All our prices are based upon the current list prices and discounts offered by our equipment suppliers and may be subjected to changes outside of our control. Prices can only be guaranteed upon receipt of a confirmation order.

We trust that the aforementioned meets with your approval and await your further instructions. Should you, however, have any queries or require any clarification please do not hesitate to contact the undersigned. We are most anxious that we have interpreted your requirements correctly and would welcome further dialogue if this has not been completed successfully.

Assuring you of our continued co-operation at all times.

Yours faithfully

For & On Behalf Of

Link-Cold Refrigeration & Air Conditioning Co. Ltd.

Mr Paul Rees M. Inst. R.

Our Proposals

Waiting Room

System Requirements- to provide cooling and heating.

Equipment Selection- 1x Panasonic high wall mounted inverter driven split heat pump air conditioning system capable of providing approximately 7.10kW of cooling capacity and 8.60kW of heating capacity.

Energy Efficiency- EER/COP (Normal Conditions) 3.17/3.51

Refrigerant- This system will operate on the new generation of Refrigerant R32 which is environmentally friendly and energy efficient.

Indoor Unit- Mounted at high level to the 7.4 metre wall to the LHS of the entrance.

Outdoor Unit- Located at high level and secured to a wall bracket on the LHS exterior wall.

The Pipe Run- From the rear of the indoor unit and through the 7.4 metre wall. Once through the wall the pipe work will run around the stairwell within trunking to the exterior wall. Once outside the pipework will connect to the outdoor unit via the most direct and practical route.

Temperature Adjustment and Control- Via 1 x handheld infra red remote controller.

Condensate Drainage- Gravity drainage to follow the pipework to outside and soak away at ground level.

Electrical Supply- Nominal system power circuit requirement is 240v and the manufacturers recommended fuse rating is 16 Amps and is required adjacent to the outdoor units. *(To be supplied by others).*

Our Price: [REDACTED]

Dispensary

System Requirements- to provide cooling and heating.

Equipment Selection- 1x Panasonic high wall mounted inverter driven split heat pump air conditioning system capable of providing approximately 2.50kW of cooling capacity and 3.15kW of heating capacity.

Energy Efficiency- EER/COP (Normal Conditions) 3.68/4.04

Refrigerant- This system will operate on the new generation of Refrigerant R32 which is environmentally friendly and energy efficient.

Indoor Unit- Mounted at high level centrally to the RHS 3.6 metre wall.

Outdoor Unit- Located at high level and secured to a wall bracket to the RHS exterior wall where the driveway widens.

The Pipe Run- From the LHS of the indoor unit and within trunking to outside. Once outside the pipework will connect to the outdoor unit via the most direct and practical route.

Temperature Adjustment and Control- Via 1 x handheld infra red remote controller.

Condensate Drainage- Gravity drainage to follow the pipework to outside and soak away at ground level.

Electrical Supply- Nominal system power circuit requirement is 240v and the manufacturers recommended fuse rating is 10 Amps and is required adjacent to the outdoor units. *(To be supplied by others).*

Our Price: [REDACTED]

Consultation Room 1

System Requirements- to provide cooling and heating.

Equipment Selection- 1x Panasonic high wall mounted inverter driven split heat pump air conditioning system capable of providing approximately 2.50kW of cooling capacity and 3.15kW of heating capacity.

Energy Efficiency- EER/COP (Normal Conditions) 3.68/4.04

Refrigerant- This system will operate on the new generation of Refrigerant R32 which is environmentally friendly and energy efficient.

Indoor Unit- Mounted at high level to the 3.9 metre wall opposite the fireplace.

Outdoor Unit- Located at high level and secured to a wall bracket to the RHS exterior wall where the driveway widens.

The Pipe Run- From the LHS of the indoor unit and within trunking to the ceiling and then across to the external wall above the window. Once outside the pipework will connect to the outdoor unit via the most direct and practical route.

Temperature Adjustment and Control- Via 1 x handheld infra red remote controller.

Condensate Drainage- Pumped drainage from a Mini Blanc condensate pump located underneath the indoor unit. The drain pipe will follow the pipework to outside and soak away at ground level.

Electrical Supply- Nominal system power circuit requirement is 240v and the manufacturers recommended fuse rating is 10 Amps and is required adjacent to the outdoor units. *(To be supplied by others).*

Our Price: [REDACTED]

Consultation Room 2

System Requirements- to provide cooling and heating.

Equipment Selection- 1x Panasonic high wall mounted inverter driven split heat pump air conditioning system capable of providing approximately 2.50kW of cooling capacity and 3.15kW of heating capacity.

Energy Efficiency- EER/COP (Normal Conditions) 3.68/4.04

Refrigerant- This system will operate on the new generation of Refrigerant R32 which is environmentally friendly and energy efficient.

Indoor Unit- Mounted at high level to the 2.5 metre wall to the RHS of the window.

Outdoor Unit- Located at high level and secured to a wall bracket to the LHS exterior wall.

The Pipe Run- From the rear of the indoor unit and through the 2.5 metre wall to outside. Once outside the pipework will connect to the outdoor unit via the most direct and practical route.

Temperature Adjustment and Control- Via 1 x handheld infra red remote controller.

Condensate Drainage- Gravity drainage to follow the pipework to outside and soak away at ground level.

Electrical Supply- Nominal system power circuit requirement is 240v and the manufacturers recommended fuse rating is 10 Amps and is required adjacent to the outdoor units. *(To be supplied by others).*

Our Price: [REDACTED]

Consultation Room 3

System Requirements- to provide cooling and heating.

Equipment Selection- 1x Panasonic high wall mounted inverter driven split heat pump air conditioning systems each capable of providing approximately 2.50kW of cooling capacity and 3.15kW of heating capacity.

Energy Efficiency- EER/COP (Normal Conditions) 3.68/4.04

Refrigerant- This system will operate on the new generation of Refrigerant R32 which is environmentally friendly and energy efficient.

Indoor Unit- Mounted at high level to the 2.5 metre wall to the LHS of the window.

Outdoor Unit- Located at high level and secured to a wall bracket to the LHS exterior wall.

The Pipe Run- From the rear of the indoor unit and through the 2.5 metre wall to outside. Once outside the pipework will connect to the outdoor unit via the most direct and practical route.

Temperature Adjustment and Control- Via 1 x handheld infra red remote controller.

Condensate Drainage- Gravity Drainage to follow the pipework to outside and soak away at ground level.

Electrical Supply- Nominal system power circuit requirement is 240v and the manufacturers recommended fuse rating is 10 Amps and is required adjacent to the outdoor units. *(To be supplied by others).*

Our Price: [REDACTED]

Kennel Area

System Requirements- to provide cooling and heating.

Equipment Selection- 1x Panasonic high wall mounted inverter driven split heat pump air conditioning system capable of providing approximately 2.50kW of cooling capacity and 3.15kW of heating capacity.

Energy Efficiency- EER/COP (Normal Conditions) 3.68/4.04

Refrigerant- This system will operate on the new generation of Refrigerant R32 which is environmentally friendly and energy efficient.

Indoor Unit- Mounted at high level to the 3.2 metre wall opposite the door.

Outdoor Unit- Located at high level and secured to a wall bracket to the LHS exterior wall.

The Pipe Run- From the RHS of the indoor unit and within trunking to outside. Once outside the pipework will connect to the outdoor unit via the most direct and practical route.

Temperature Adjustment and Control- Via 1 x handheld infra red remote controller.

Condensate Drainage- Gravity drainage to follow the pipework to outside and soak away at ground level.

Electrical Supply- Nominal system power circuit requirement is 240v and the manufacturers recommended fuse rating is 10 Amps and is required adjacent to the outdoor units. *(To be supplied by others).*

Our Price: [REDACTED]

Operating Room

System Requirements- to provide cooling and heating.

Equipment Selection- 1x Panasonic high wall mounted inverter driven split heat pump air conditioning system capable of providing approximately 3.40kW of cooling capacity and 3.84kW of heating capacity.

Energy Efficiency- EER/COP (Normal Conditions) 3.18/3.66

Refrigerant- This system will operate on the new generation of Refrigerant R32 which is environmentally friendly and energy efficient.

Indoor Unit- Mounted at high level to the 4.2 metre wall above the old fireplace.

Outdoor Unit- Located at high level and secured to a wall bracket to the RHS exterior wall where the driveway widens.

The Pipe Run- From the RHS of the indoor unit and within trunking to outside. Once outside the pipework will connect to the outdoor unit via the most direct and practical route.

Temperature Adjustment and Control- Via 1 x handheld infra red remote controller.

Condensate Drainage- Gravity drainage to follow the pipework to outside and to soak away at ground level.

Electrical Supply- Nominal system power circuit requirement is 240v and the manufacturers recommended fuse rating is 10 Amps and is required adjacent to the outdoor units. *(To be supplied by others).*

Our Price: [REDACTED]

Cattery Area

System Requirements- to provide cooling and heating.

Equipment Selection- 1x Panasonic high wall mounted inverter driven split heat pump air conditioning system capable of providing approximately 2.50kW of cooling capacity and 3.15kW of heating capacity.

Energy Efficiency- EER/COP (Normal Conditions) 3.68/4.04

Refrigerant- This system will operate on the new generation of Refrigerant R32 which is environmentally friendly and energy efficient.

Indoor Unit- Mounted at high level to the 1.9 metre wall opposite the door.

Outdoor Unit- Located at high level and secured to a wall bracket to the LHS exterior wall.

The Pipe Run- From the LHS of the indoor unit and within trunking to outside. Once outside the pipework will connect to the outdoor unit via the most direct and practical route.

Temperature Adjustment and Control- Via 1 x handheld infra red remote controller.

Condensate Drainage- Gravity drainage to follow the pipework to outside and soak away at ground level.

Electrical Supply- Nominal system power circuit requirement is 240v and the manufacturers recommended fuse rating is 10 Amps and is required adjacent to the outdoor units. *(To be supplied by others).*

Our Price: [REDACTED]

Prep Room

System Requirements- to provide cooling and heating.

Equipment Selection- 1x Panasonic high wall mounted inverter driven split heat pump air conditioning system capable of providing approximately 6.25kW of cooling capacity and 6.80kW of heating capacity.

Energy Efficiency- EER/COP (Normal Conditions) 3.24/3.51

Refrigerant- This system will operate on the new generation of Refrigerant R32 which is environmentally friendly and energy efficient.

Indoor Unit- Mounted at high level centrally to the 7 metre wall to the LHS of the entrance.

Outdoor Unit- Located at high level and secured to a wall bracket at the rear of the building.

The Pipe Run- From the RHS of the indoor unit and within trunking to outside. Once outside the pipework will connect to the outdoor unit via the most direct and practical route.

Temperature Adjustment and Control- Via 1 x handheld infra red remote controller.

Condensate Drainage- Gravity drainage to follow the pipework to outside and soak away at ground level.

Electrical Supply- Nominal system power circuit requirement is 240v and the manufacturers recommended fuse rating is 16 Amps and is required adjacent to the outdoor units. *(To be supplied by others).*

Our Price: [REDACTED]

Link-Cold

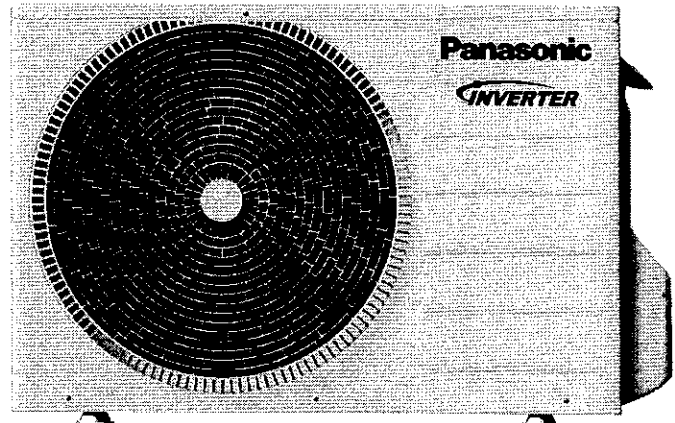
RAC Inverter (FZ)

Product Code: CU-FZ25UKE

Notes

- » R32
- » Suitable For Replacement Technology
- » Single Phase

①



MODEL NUMBER	CU-FZ25UKE	
Nominal Cooling	kW	2.50 (0.85 - 3.00)
Nominal Heating	kW	3.15 (0.80 - 3.60)
Operating Range - Cooling (Outdoor Air)		-10°C to 43°C
Operating Range - Heating (Outdoor Air)		-15°C to 24°C
Height	mm	542
Width	mm	780
Depth	mm	289
Weight	mm	26
Airflow Rate	l/s	508 - 508
Sound Pressure Level	dB(A)	48 - 49
Pipe Connection Size - Gas	in	3/8"
Pipe Connection Size - Liquid	in	1/4"
Maximum Pipe Run	m	3 - 15
Maximum Height Difference	m	15
Refrigerant		R32
Precharged For	m	7.5
Factory Charge	kg	0.58
GWP (Tonnes CO2 Equivalent)		0.39
Additional Charge	g/m	10
Suitable For Replacement Technology		Yes
Power Supply		From Indoor
Interconnecting Cables		3 core & E
Suggested Fuse Size	A	N/A

* exact cooling and heating capacities will depend on connected indoor unit(s)

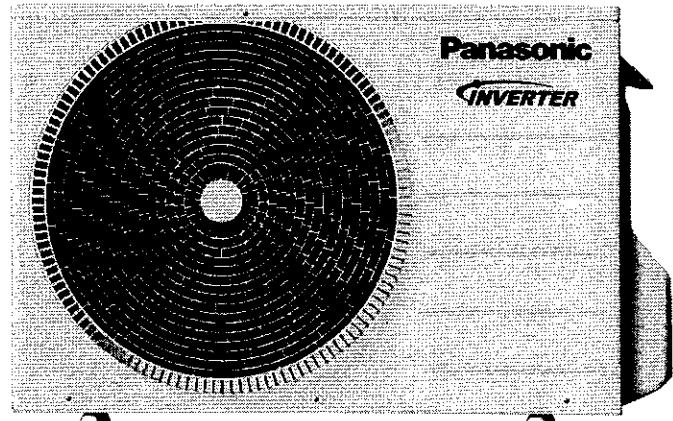
RAC Inverter (FZ)

Product Code: CU-FZ35UKE

②

Notes

- » R32
- » Suitable For Replacement Technology
- » Single Phase



MODEL NUMBER	CU-FZ35UKE	
Nominal Cooling	kW	3.40 (0.85 - 3.90)
Nominal Heating	kW	3.84 (0.80 - 4.40)
Operating Range - Cooling (Outdoor Air)		-10°C to 43°C
Operating Range - Heating (Outdoor Air)		-15°C to 24°C
Height	mm	542
Width	mm	780
Depth	mm	289
Weight	mm	27
Airflow Rate	l/s	518 - 518
Sound Pressure Level	dB(A)	48 - 50
Pipe Connection Size - Gas	In	3/8"
Pipe Connection Size - Liquid	In	1/4"
Maximum Pipe Run	m	3 - 15
Maximum Height Difference	m	15
Refrigerant		R32
Precharged For	m	7.5
Factory Charge	kg	0.67
GWP (Times CO2 Equivalent)		0.45
Additional Charge	g/m	10
Suitable For Replacement Technology		Yes
Power Supply		From Indoor
Interconnecting Cables		3 core & E
Suggested Fuse Size	A	N/A

*

* exact cooling and heating capacities will depend on connected indoor unit(s)

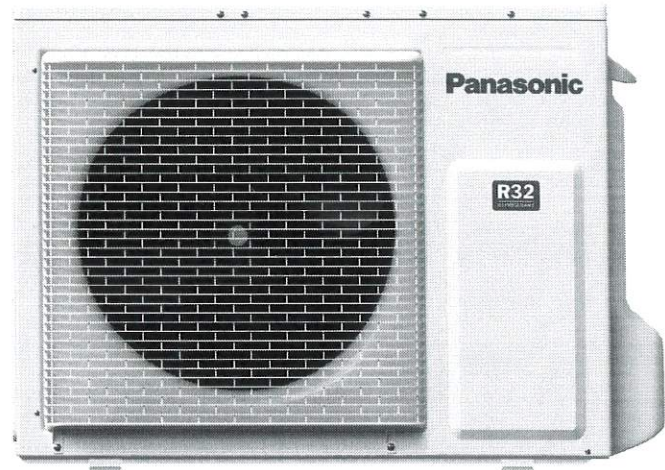
RAC Inverter (FZ)

Product Code: CU-FZ60UKE

3

Notes

- » R32
- » Suitable For Replacement Technology
- » Single Phase



MODEL NUMBER	CU-FZ60UKE	
Nominal Cooling	kW	6.25 (0.98 - 7.10)
Nominal Heating	kW	6.80 (0.98 - 8.50)
Operating Range - Cooling (Outdoor Air)		-10°C to 43°C
Operating Range - Heating (Outdoor Air)		-15°C to 24°C
Height	mm	695
Width	mm	875
Depth	mm	320
Weight	mm	43
Airflow Rate	l/s	710 - 692
Sound Pressure Level	dB(A)	49 - 49
Pipe Connection Size - Gas	in	1/2"
Pipe Connection Size - Liquid	in	1/4"
Maximum Pipe Run	m	3 - 30
Maximum Height Difference	m	15
Refrigerant		R32
Precharged For	m	7.5
Factory Charge	kg	1.15
GWP (Tonnes CO2 Equivalent)		0.78
Additional Charge	g/m	15
Suitable For Replacement Technology		Yes
Power Supply		From Indoor
Interconnecting Cables		3 core & E
Suggested Fuse Size	A	N/A

*

* exact cooling and heating capacities will depend on connected indoor unit(s)

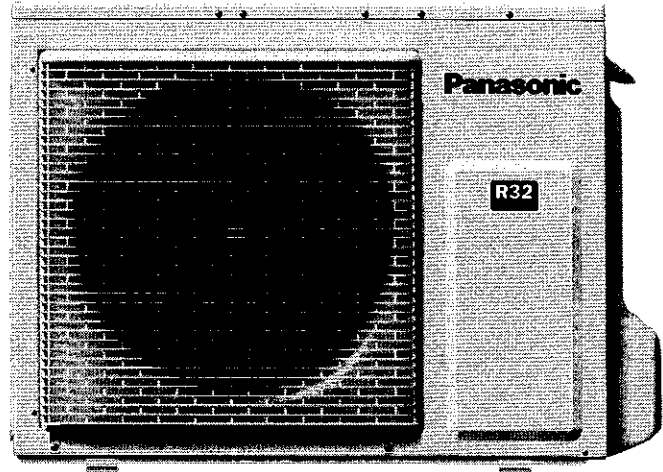
RAC Inverter (FZ)

Product Code: CU-FZ60UKE

Notes

- » R32
- » Suitable For Replacement Technology
- » Single Phase

(4)

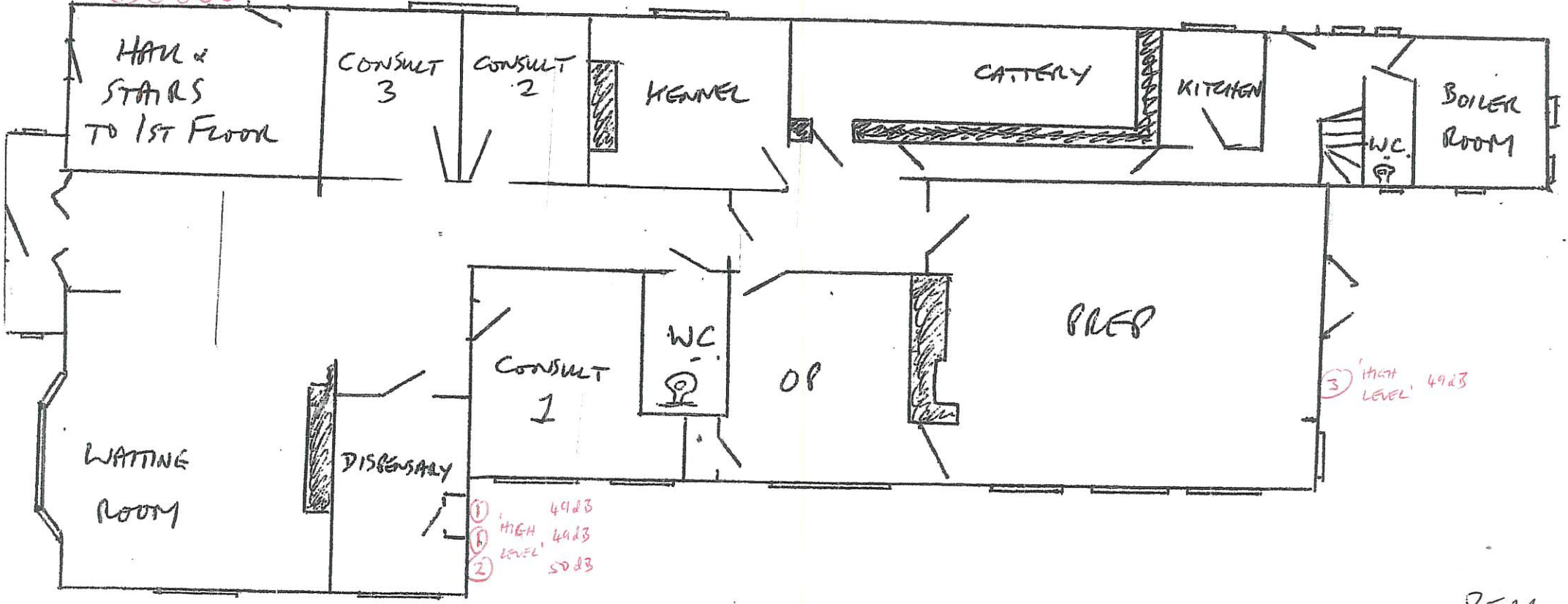


MODEL NUMBER	CU-FZ60UKE	
Nominal Cooling	kW	6.25 (0.98 - 7.10)
Nominal Heating	kW	6.80 (0.98 - 8.50)
Operating Range - Cooling (Outdoor Air)		-10°C to 43°C
Operating Range - Heating (Outdoor Air)		-15°C to 24°C
Height	mm	695
Width	mm	875
Depth	mm	320
Weight	mm	43
Airflow Rate	l/s	710 - 692
Sound Pressure Level	dB(A)	49 - 49
Pipe Connection Size - Gas	in	1/2"
Pipe Connection Size - Liquid	in	1/4"
Maximum Pipe Run	m	3 - 30
Maximum Height Difference	m	15
Refrigerant		R32
Precharged For	m	7.5
Factory Charge	kg	1.15
GWP (Tonnes CO2 Equivalent)		0.78
Additional Charge	g/m	15
Suitable For Replacement Technology		Yes
Power Supply		From Indoor
Interconnecting Cables		3 core & E
Suggested Fuse Size	A	N/A

✘

* exact cooling and heating capacities will depend on connected indoor unit(s)

49dB 49dB 49dB
49dB 49dB
'HIGH LEVEL'
④ ① ① ① ①

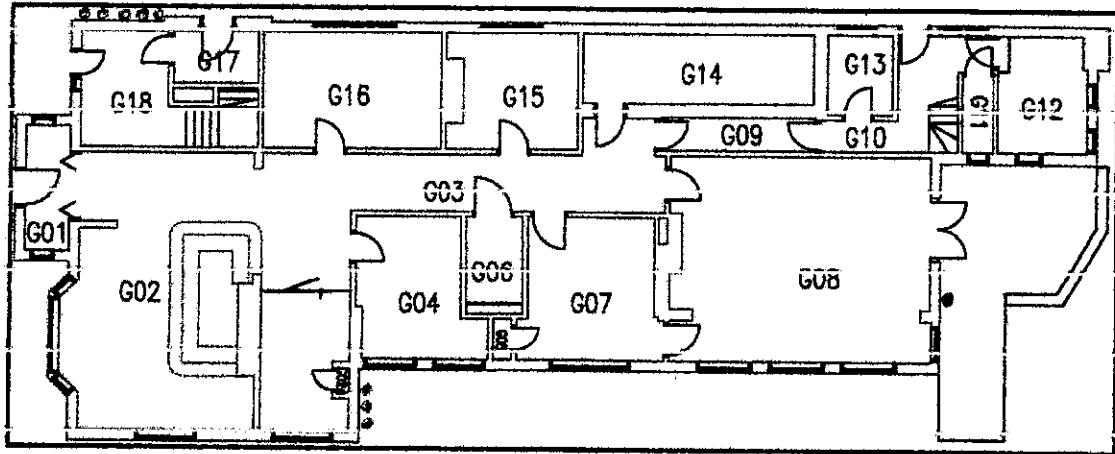


FRONT OF BUILDING
TOWARDS
OSWALD ROAD

GROUND
FLOOR

REAR
OF
BUILDING

GROUND FLOOR

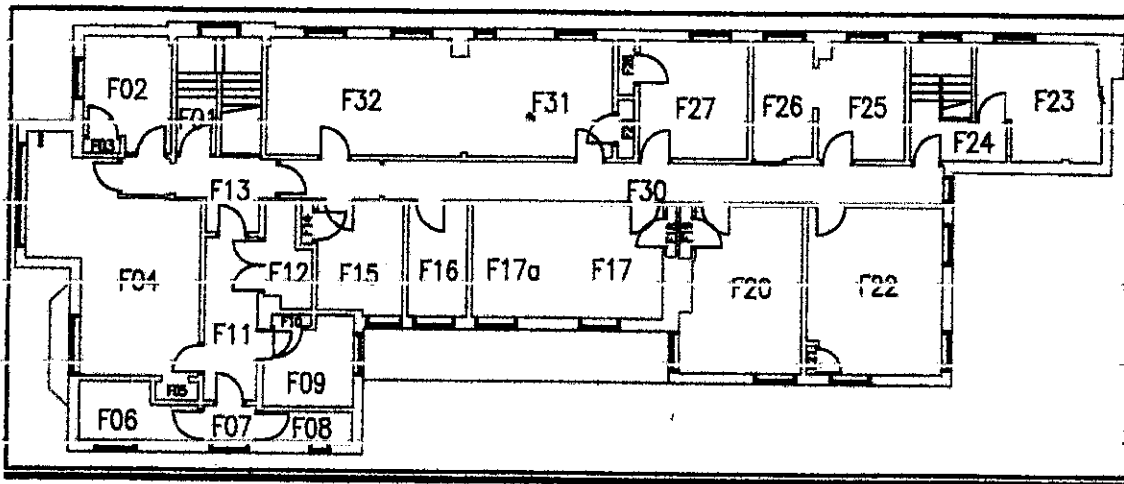


Room/ current use	Approx. Area (m ²)
G01 / Entrance	4.17
G02 / Reception	4.17
G03 / Circ. Space	39.81
G04 / office	12.05
G05 / Cupboard	0.56
G06 / WC	3.65

Room/current use	Approx. Area (m ²)
G07 / office	14.42
G08 / function room	39.64
G09 / circ space	3.86
G10 / circ space	3.05
G11 / wc	1.77
G12 / boiler room	7.68

Room/current use	Approx. Area (m ²)
G13 / kitchen	6.66
G14 / safe	12.12
G15 / office	10.73
G16 / office	15.06
G17 / room	3.30
G18 / entrance (to 1 st floor)	10.90

FIRST FLOOR



Room/ current use	Approx. Area (m ²)
F01 / Stairs	3.46
F02 / Admin area	7.10
F03 / Store	0.39
F04 / office	21.68
F05 / store	0.57
F06 / WC	4.47
F07 / circ space	1.42
F08 / WC	2.05
F09 / office	5.49
F10 / store	0.34
F11 / circ space	6.33

Room/current use	Approx. Area (m ²)
F12 / store	3.00
F13 / circ. Space	5.85
F14 / store	0.37
F15 / office	6.92
F16 / kitchen	4.97
F17 & F17a / office	15.90
F18 / store	0.39
F19 / store	0.50
F20 / office	19.88
F21 / store	0.20
F22 / office	16.27

Room/current use	Approx. Area (m ²)
F23 / office	9.66
F24 / stairs	4.37
F25 / store	7.94
F26 / store	5.11
F27 / office	9.41
F28 / store	0.66
F29 / store	0.68
F30 / circ. Space	18.77
F31 / office	12.61
F32 / office	17.21