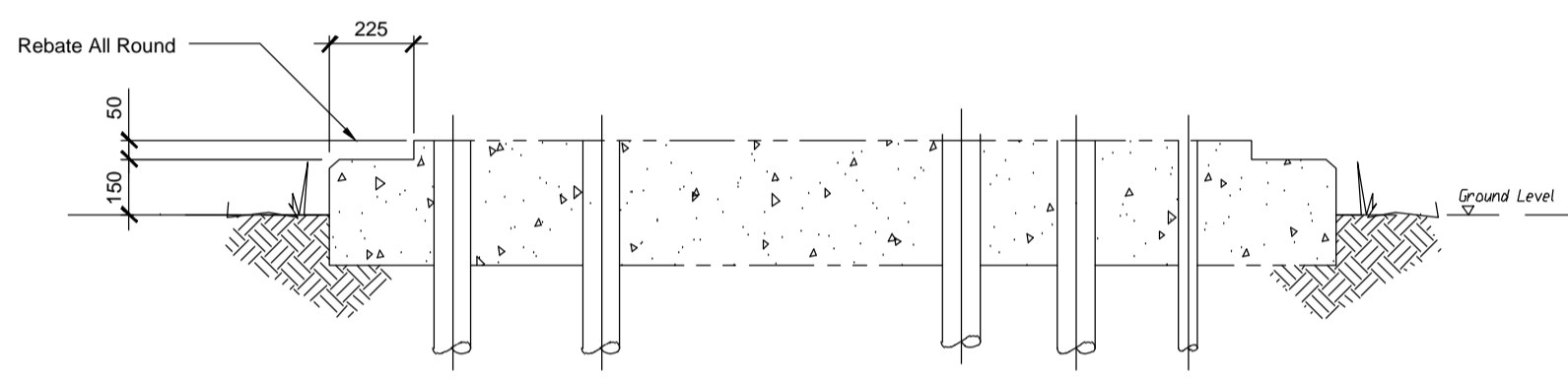
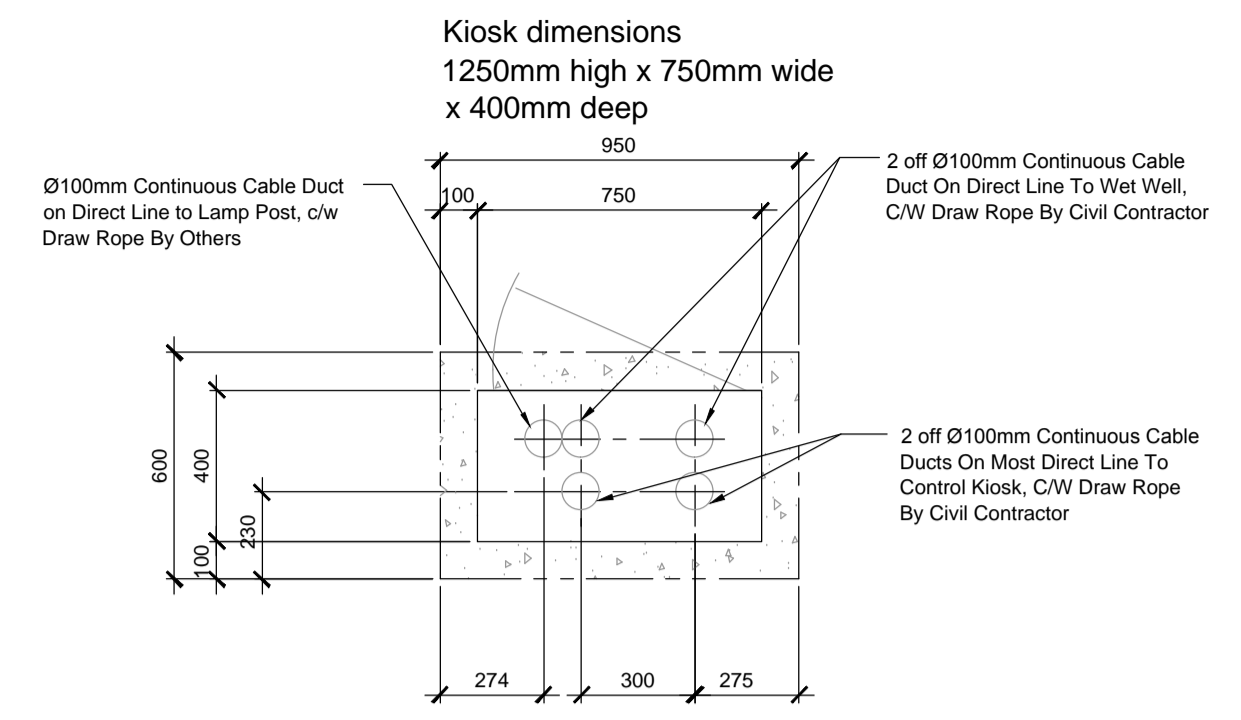


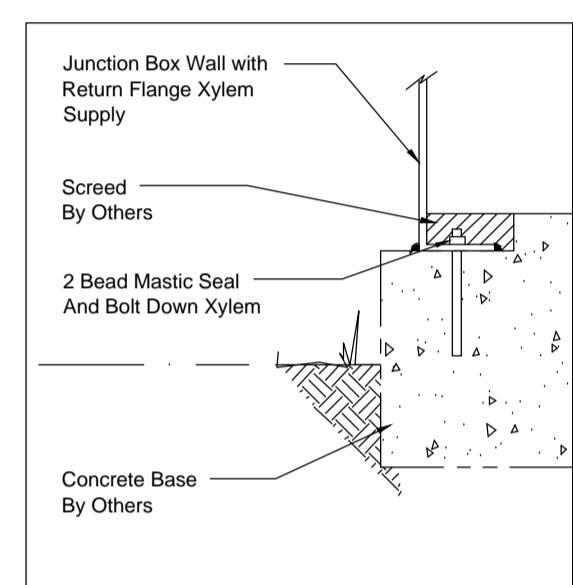
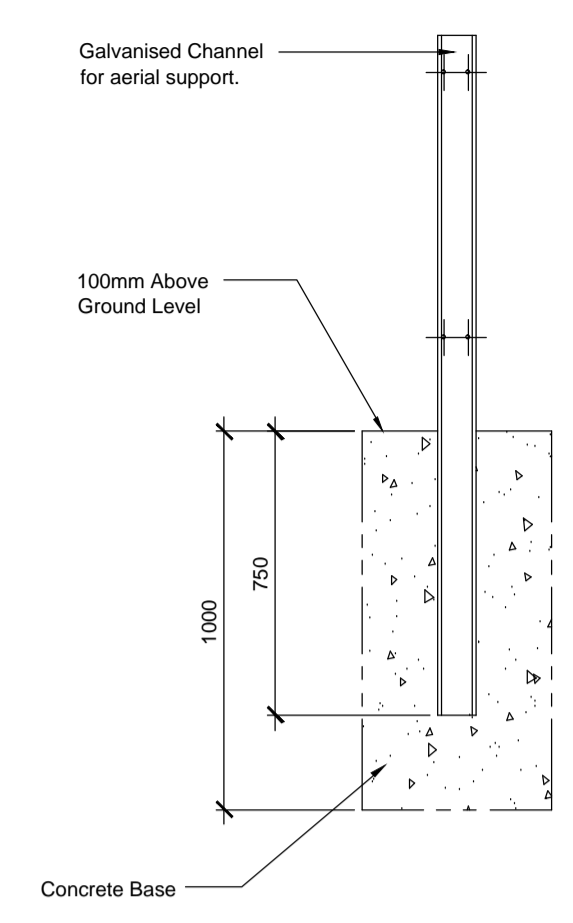
Control Kiosk Plinth Detail  
Scale 1:20



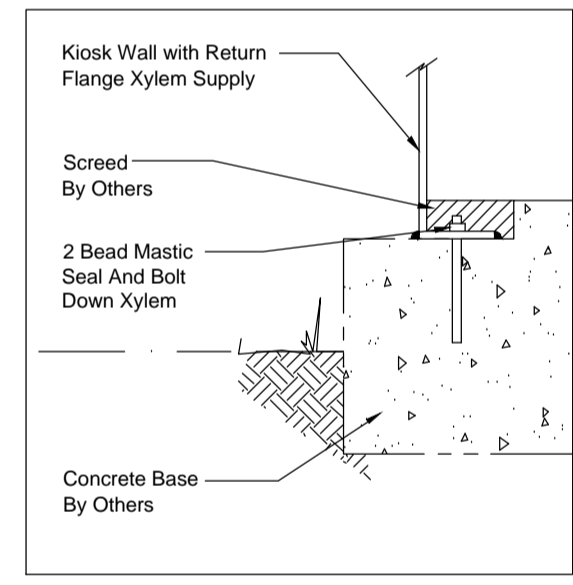
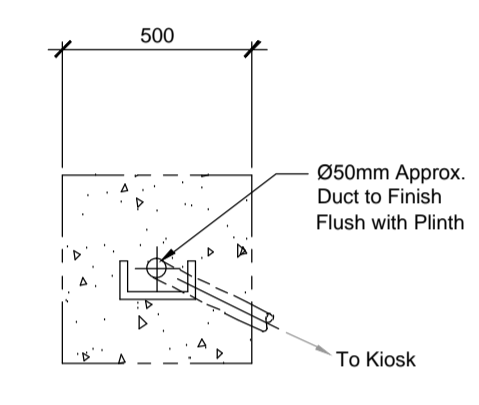
The Bottom Flange Shall Be Sealed With Mastic And Bolted To The Plinth In Accordance With Pimps Standard Installation Procedures.  
When The Installation Is Complete All Cable Ducts To Be Sealed To A Minimum Depth Of 100mm Maximum Depth Of 150mm With An Approved Polyurethane Foam Impervious To Water And Gas.



Junction Box Kiosk Plinth Detail  
Scale 1:20



Junction Box Rebate Detail  
Scale 1:20



MCC Kiosk Rebate Detail  
Scale 1:20

Indicative Layout Only  
(Final design to specialist details)

ASSOCIATED DRAWINGS

No.	TITLE

NOTES

- The pumping Station is to be constructed in accordance with Sewers for Adoption 6th edition and the requirements of Severn Trent Water
- This drawing is to be read in conjunction with drawings supplied by the pump manufacturer.
- Concrete grade to the structures shall comprise compressive strength of C32/40.  
Max water cement ratio = 0.55  
Min cement content = 320 Kg/m<sup>3</sup>  
Allowable cement type = A, 50% GGBS  
Max aggregate size = 20mm  
Chloride content class = Cl 0.20  
Consistence class = S3  
Concrete blinding shall be Gen 3
- Plinth construction to be in accordance with Severn Trent Water requirements.

REV	DATE	BY	DETAILS	CHK'D

AMENDMENTS

CLIENT

PROJECT

Station Road,  
Kirton in Lindsey

TITLE

FOUL WATER PUMPING STATION  
KIOSK AND PLINTH DETAILS

DRAWING No: MA10850 / 202-5

DRAWING STATUS: PRELIMINARY

SCALE	DRAWN	ENGINEER
1:20 @ A1	B Camill	J McKellar
DATE	CHECKED	APPROVED BY
July 2018	J McKellar	J McKellar

millward

t: 0115 941 4560  
no.1 main hill, nottingham ng1 1jq  
e: info@millward.co.uk www.millward.co.uk