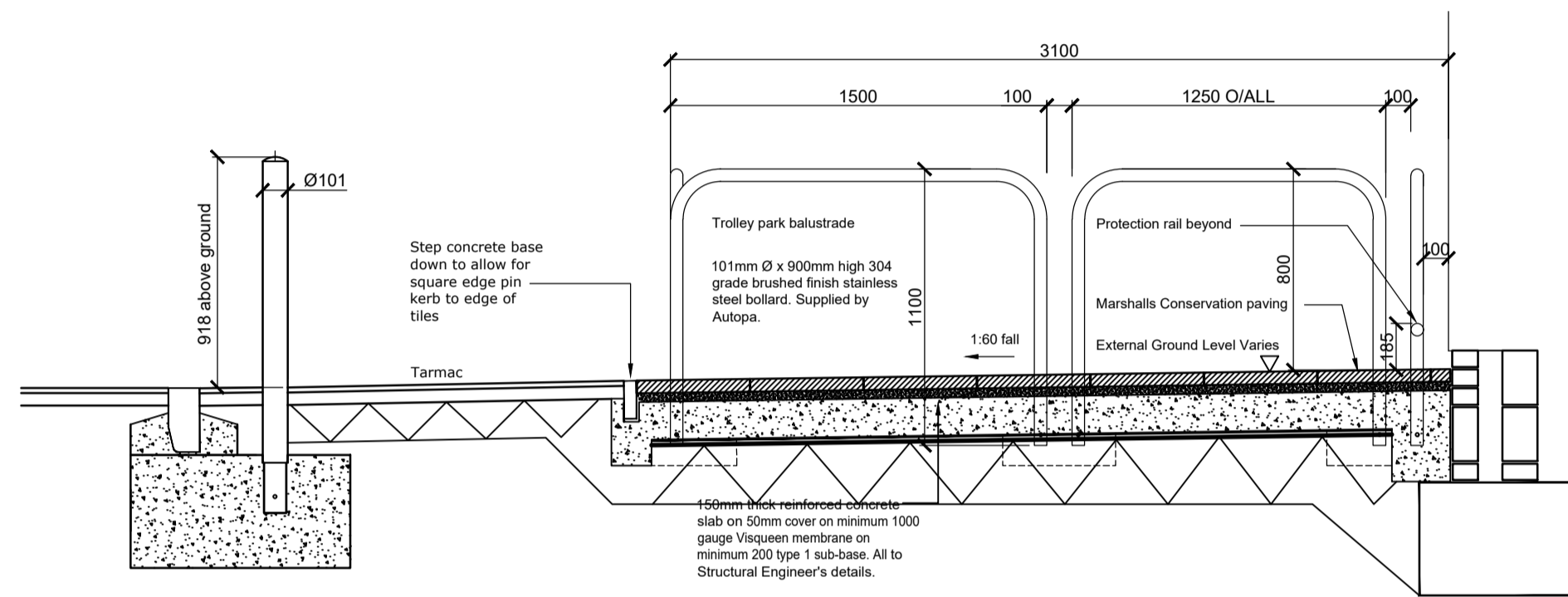


PARKING SETTING OUT 1:50



PAVING
The trolley park/entrance area is laid to fall maximum 1:60 away from the main entrance and paved with Marshall's Conservation paving 450 x 450 x 50mm thick on 30mm compacted course sand on 150mm thick reinforced concrete slab laid to falls. The slab concrete is to be mature and clean with a surface regularity of SR1. The concrete slab is to be approved Structural Engineer's details, this concrete slab is on 50mm cover on minimum 1000 gauge Visqueen membrane on minimum 200 type 1 sub-base. The sub-base specification is subject to site specific requirements and to approved Structural Engineer's details. Movement joints within the slab are to carry through the paving above and these joints are to suit the paving setting out. The paving movement joint is to be installed directly above the slab movement joint; i.e. these movement joints and their spacing must be reflected directly at the point of crack inducement through the final floor finish. The installation of the paving movement joints are to be in accordance with BS 5385 Part 3. Note no diagonal cuts within the apron to suit site levels. The surface preparation, concrete slab survey is to be carried out prior to tile laying to check if the surface regularly to SR1 standards. The slab should be cast and protected as necessary during the curing period for a suitable amount of time prior to paving. Thus that it is taken into account in the programme and allows any early shrinkage to take place prior to bonding tiles to it.

TROLLEY RAILS
48mm dia satin stainless steel tubular hooped rails 1250mm long x 850mm and 1500mm long x 850mm high above ground level, core drilled 75mm dia into concrete paving and slab and neatly grouted in.

BOLLARDS
Bollards to be installed to front of the trolley park at 1800mm centres, set back 350mm from the outer face of the kerb at the junction with the car park. Bollards are to be approx 100mm dia semi-domed top brushed stainless steel proprietary anti-ram bollards with steel core, or similar, approx 900mm above GL, core drilled and grouted into trolley park paving.

SHOPFRONT PROTECTION RAILS (full height shopfronts)
48mm dia satin stainless steel continuous tubular hooped rails with sleeved joints in the length, 185mm high above ground level to centreline and with intermediate supports at maximum 1200mm c/c, core drilled 75mm dia into concrete paving and slab and neatly grouted in. Overall lengths to suit shopfront dimensions.

CYCLE RAILS & HOLDERS
Cycle rails: 48mm satin stainless Sheffield type tubular hooped rails 800mm long x 750mm high above ground level, core drilled 75mm dia into concrete paving and slab and neatly grouted in.

TROLLEY CHAIN HOLDER
150mm satin stainless steel tube 600mm high with 300mm dia 6mm thick flanged base welded on and drilled for 4no 10mm dia Rawbolts bolted to paving. Tube drilled front to back 400mm from top for 10mm stainless steel through bolt with domed nut to retain chain. 10mm dia drainage hole drilled in rear of tube 300mm from top. Tube filled with fine concrete to within 300mm of top once chain has been attached to retaining bolt.

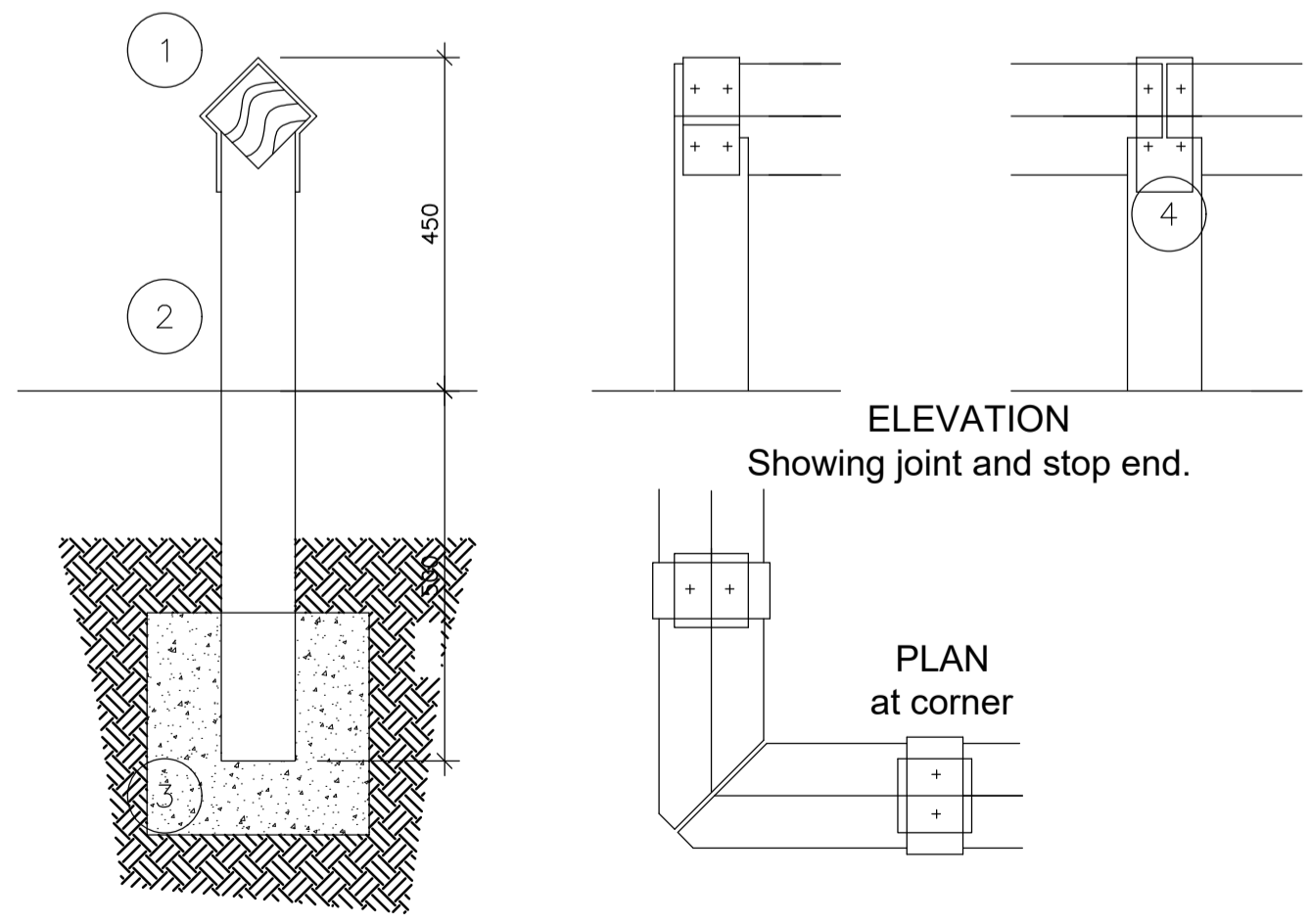
LEGEND:

MJ -- -- EXTERNAL TILE MOVEMENT JOINT.

External movement joints locations indicated on this drawing are to be read for principle and indicative purposes only.

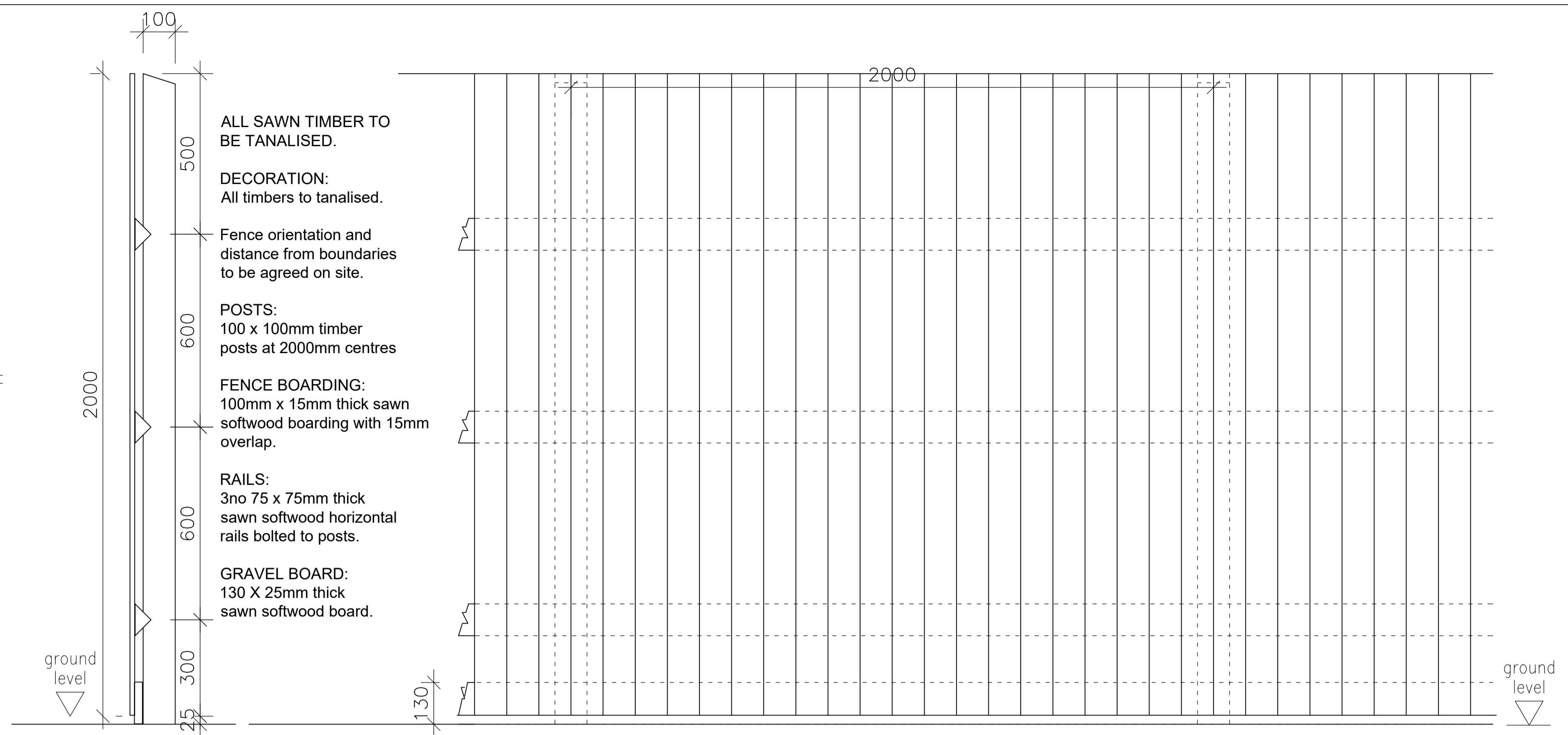
The movement joints locations are subject to site specific requirements and to be installed directly above the slab movement joint.

TROLLEY BAY PAVING 1:25

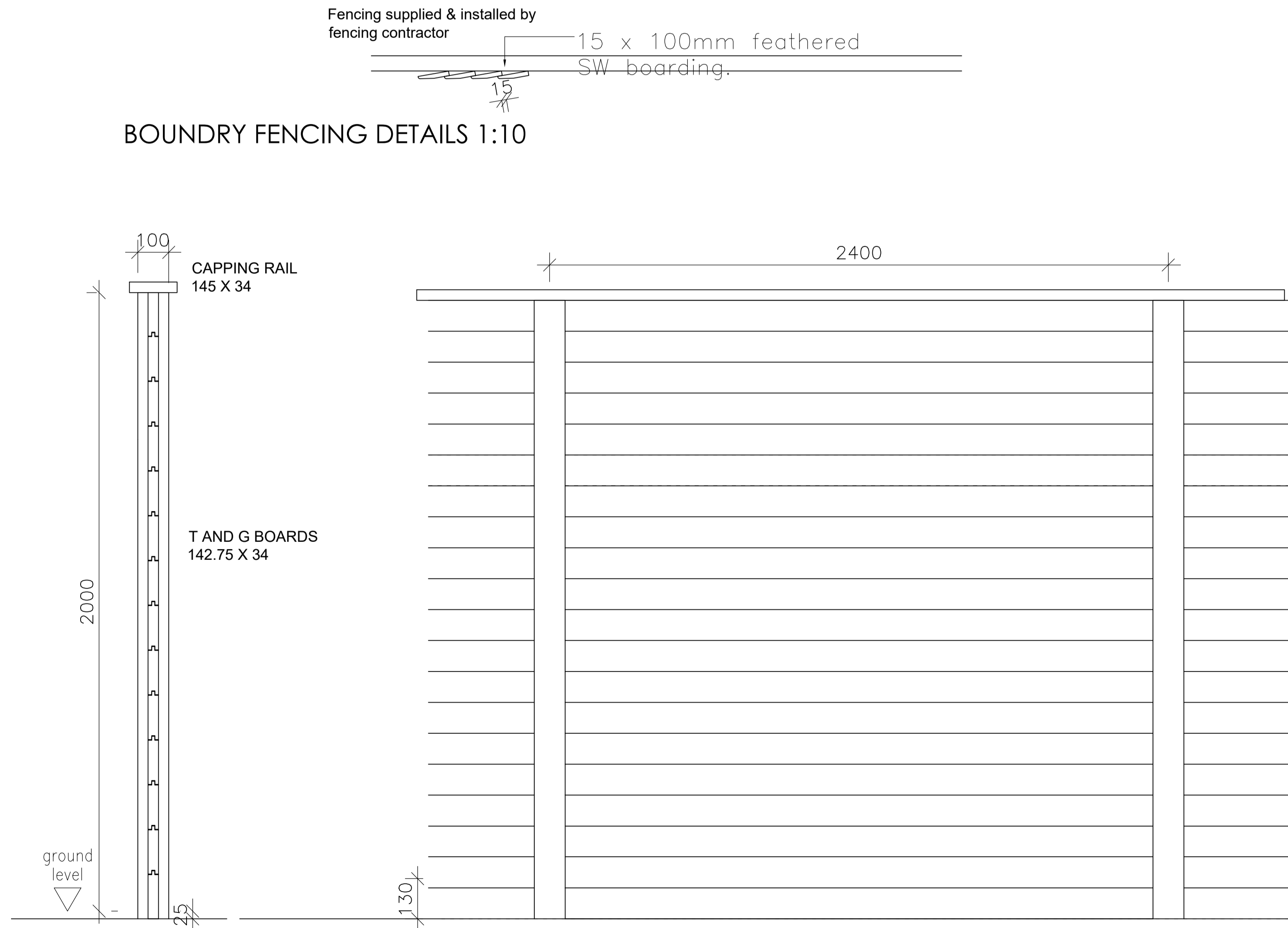


- 100x100mm top rail (preservative treated, s/wd. sawn finish).
- 100x100mm posts (as above) 1.5m maximum spacing, ends shaped to receive top rail. Buried ends to be preservative impregnated as specified.
- Concrete foundation to post, 1:6 mix.
- 100mm wide zinc strap, 37mm galvanised clout nail fixing.
- Timber stain finish dark brown to match timber boarded fencing.

KNEE RAIL DETAILS 1:10



BOUNDARY FENCING DETAILS 1:10



ACOUSTIC (JACOUSTIC OR EQUIVALENT) BOUNDARY FENCING DETAILS 1:10

Rev	Date	Description	GH	WH
A	29.10.19	ACOUSTIC FENCE DETAIL ADDED		

Project Title: ALDI FOODSTORE EXTENSION

Client: ALDI STORES LTD

Status: TENDER

Scale: VARIES Drawing Size: A1

Drawn By: GH Checked By: NH Date: OCT,19

Job-Dwg No: 1262-258 Rev: A

THE HARRIS PARTNERSHIP WAKEFIELD
231, Idwalloppin, Worksfield, WF1 3QA
T: 01924 291 800 F: 01924 290 072

THE HARRIS PARTNERSHIP MANCHESTER
2nd Floor, Corners Warehouse,
77 Dale Street, Manchester, M1 2HG
T: 0161 208 8555 F: 0161 244 5809

THE HARRIS PARTNERSHIP MILTON KEYNES
The Old Rectory, 79 High Street
Newport Pagnell, MK18 8JA
T: 01908 211 577 F: 01908 211 722

THE HARRIS PARTNERSHIP READING
101 London Road, Reading, RG1 5BY
T: 0118 950 7700 F: 0118 756 8642

ARCHITECTS
www.harrispartnership.com