

## Appendix B.2 – Traffic Management Plan

### Overview

The scheme includes the demolition of existing buildings and the construction of a new Emergency Department at Scunthorpe General Hospital. The scheme will be built along the live Blue light route with construction traffic coming in via one of the main entrances on Cliff Gardens. In addition to being the ambulance route, this is also one of the main public access points to the car parks. Appropriate signage directing construction traffic to the correct point of entry will be placed along the route and the traffic plan will be shared with all contractors to follow.

### Construction Traffic – Emergency Department

Construction traffic will enter the premises via Cliff Gardens. A controlled booking in system called Datascope will be used to control the vehicle movements on site and to avoid key times as agreed with the hospital. Any abnormal loads (cranes, articulated vehicles) can then be pre-arranged and appropriate control measures put in place.

The traffic island just off the entrance will need to be removed and reinstated back as road, with the white lining reinstated to allow a better turn for ambulances and cars alongside the hoarding line. Delivery vehicles for construction will enter on the right hand side of the entrance and go straight to the holding area at the gate where they will be controlled via a direct gateperson. The deliveries will continue through the gate and follow the road straight out to Church Lane upon completion of drop off. Separate controls within the hospital will be required as this will no longer be a through road during the construction phase. The majority of this area is hard standing and it is not anticipated that there will be much debris, however, groundworks will inevitably increase the likelihood of mud deposits and as such, a road cleaner will be employed to be called as and when necessary to clear the hospital and surrounding roads. Public and Emergency access will be maintained at all times.

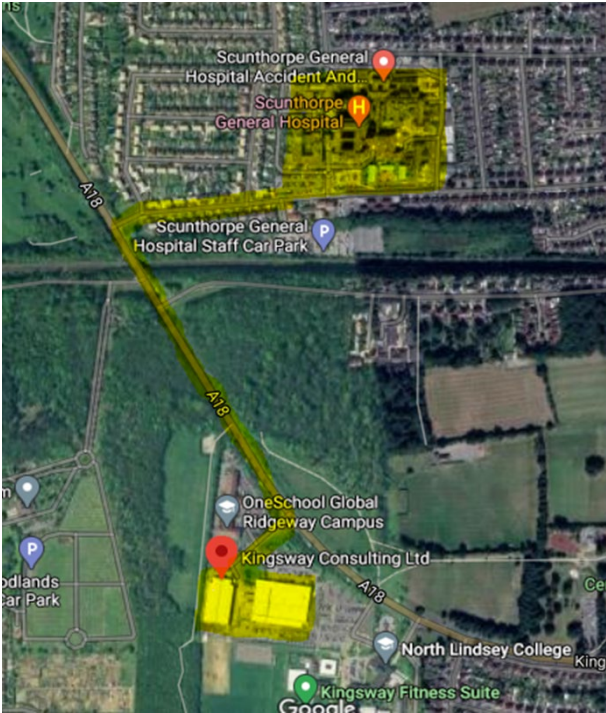
### Construction Traffic – Car Park Works

Car Park 3 will be closed to all non construction personnel during the works. Construction traffic will enter via Church Lane. A controlled booking in system called Datascope will be used to control the vehicle movements on site and to avoid key times as agreed with the hospital. Any abnormal loads (cranes, articulated vehicles) can then be pre-arranged and appropriate control measures put in place. Once the barrier and entrance alterations have been completed as part of the enabling works, deliveries can be directed straight into the designated area from Church Lane and exit via the exit point of the car park. A banksperson will be used for this at all times. There will be sufficient space on the remaining area of Car Park 3 for the contractors to park.

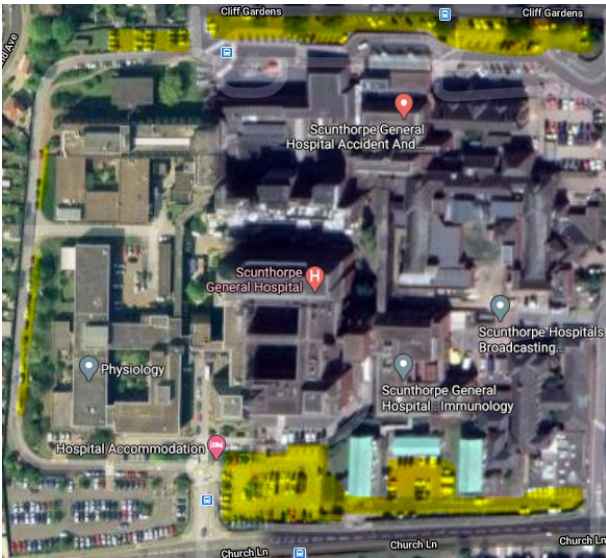
### Parking

The parking in around the site area is predominantly staff that are due to leave site as part of the overall scheme meaning there will be little impact on the requirement for parking initially. However, there is limited space on the site remaining for public and certainly not for additional parking for construction works, so where possible, construction traffic will be parked within the designated site boundary. The below images capture the location of the off site facility and parking and the remaining public spaces during the works.

**Decant to new facility at Beacon House**



- As per the transport assessment, approximately 70-80 personnel will move to the new building at New Beacon house (highlighted)
- There are an additional 200-300 staff currently working from home as part of the agile working strategy for the Trust and the Trust have confirmed that they will continue to work from home due to the success of this operation after the restrictions are lifted.



- The areas highlighted will remain as staff and public parking during the works. Additionally, once the multideck car park is complete, there will be a further 149 spaces available for use.

	<ul style="list-style-type: none"> <li>Furthermore, there is staff parking area located on the opposite side of Church Lane which holds approximately 390 places.</li> </ul>
--	--

Additionally, contractors will be encouraged to share vehicles once the restrictions on social distancing are lifted. Further space has been made available around the morgue and 6 vehicles can be accommodated here within a fenced off area. Parking has also been made available at an off site area at the nearby Beacon Hosue, whereby contractors can park and car share, thus reducing the number of additional vehicles at the hospital. There is also the use of the local park and ride scheme that runs directly from the car park in Scunthorpe to the hospital.