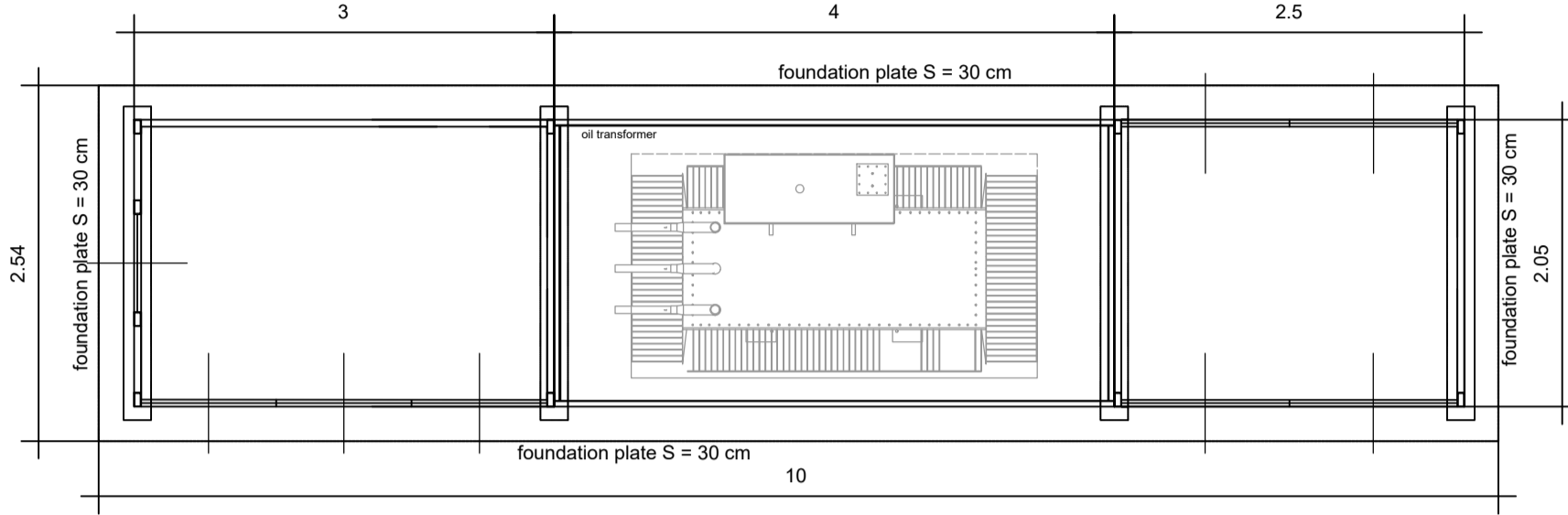
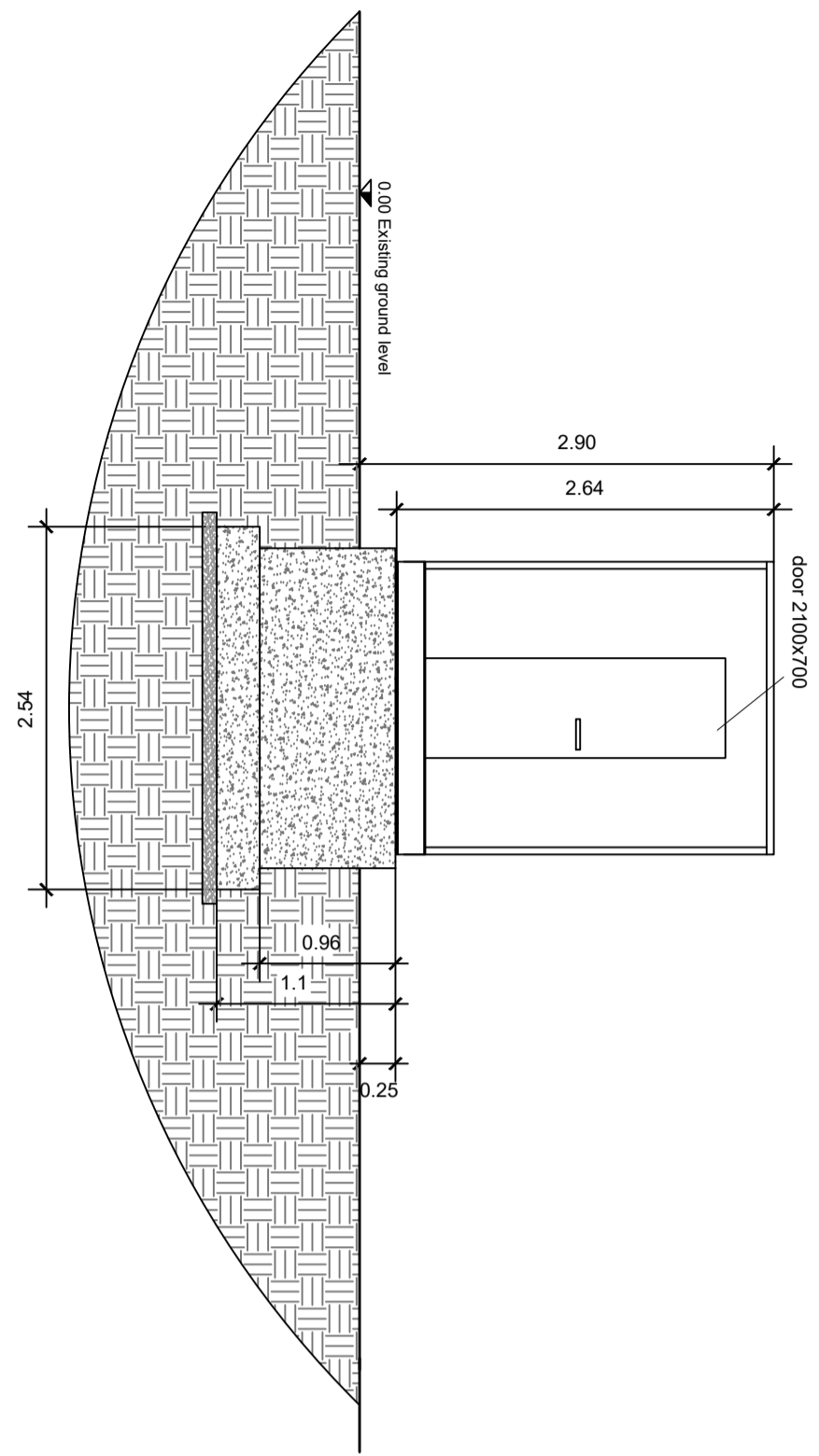
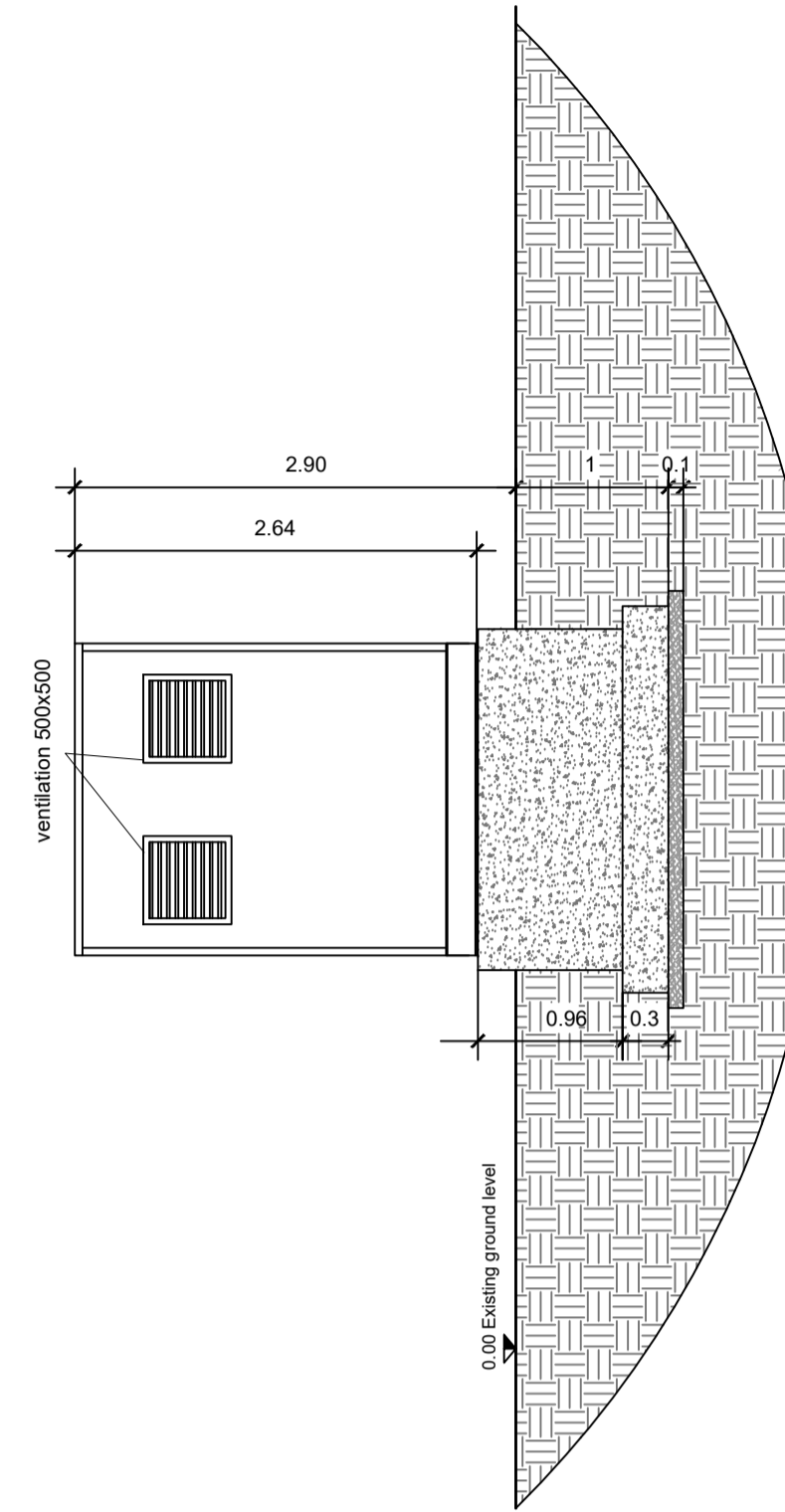


TRANSFORMER SUBSTATION 3 - L = 950 cm (SUB.3)

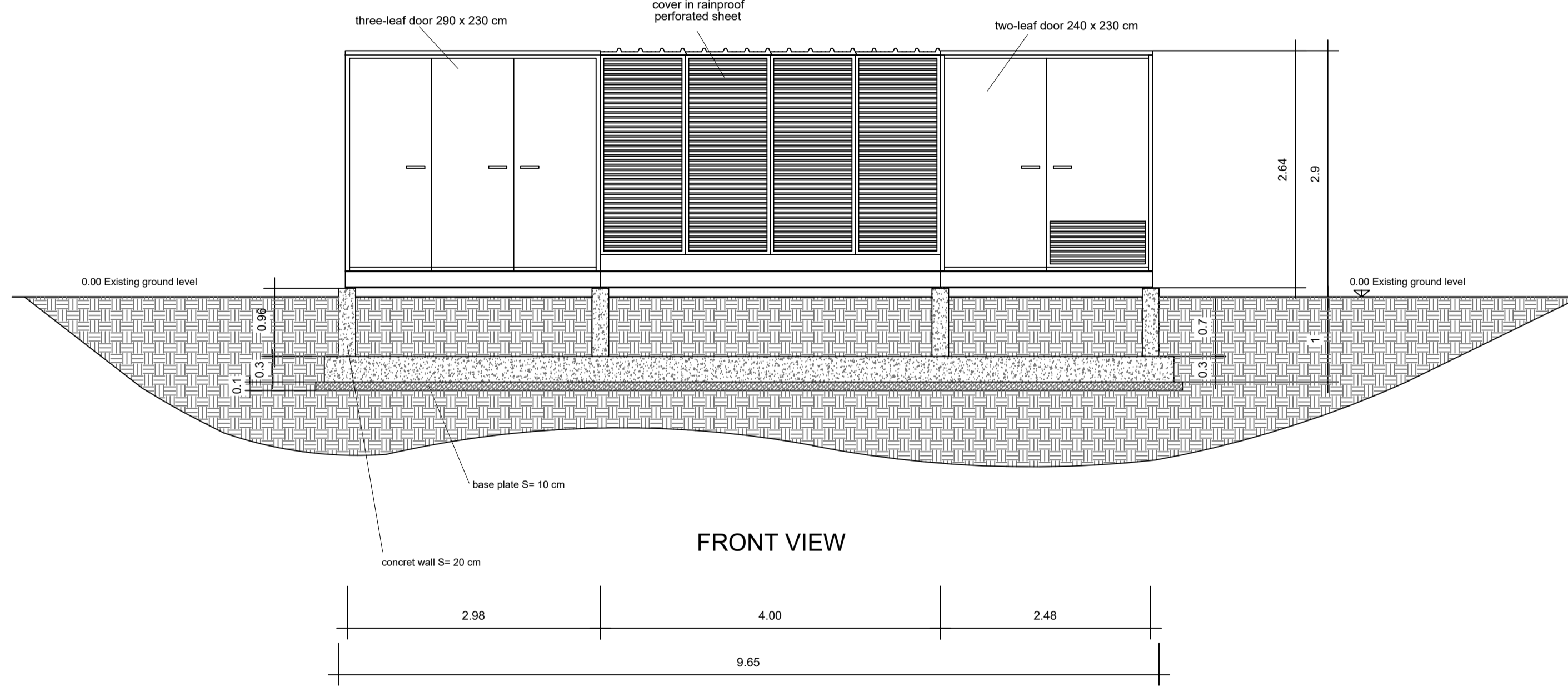
LEFT SIDE VIEW



PLAN VIEW



RIGHT SIDE VIEW



FRONT VIEW

Detail of waterproofing - internal side -

ANNOTATION

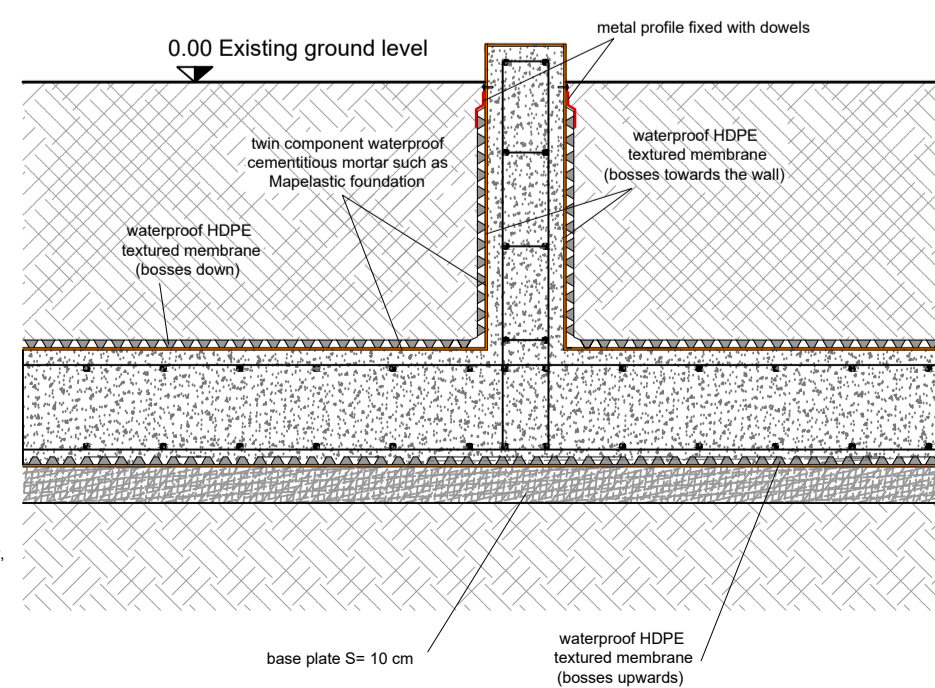
1. The textured membrane prevents damage to the waterproofed surface during the casting or filling phases;
2. Before positioning the texture membrane, the twin component waterproof cementitious mortar (capable of resisting both the positive and negative pressure of water) must be applied with a roller, with a maximum thickness of 2 mm per coat;
3. The sheets of the embossed membrane in HDPE must be spread with overlaps of 20 cm.

Characteristics of the textured membrane

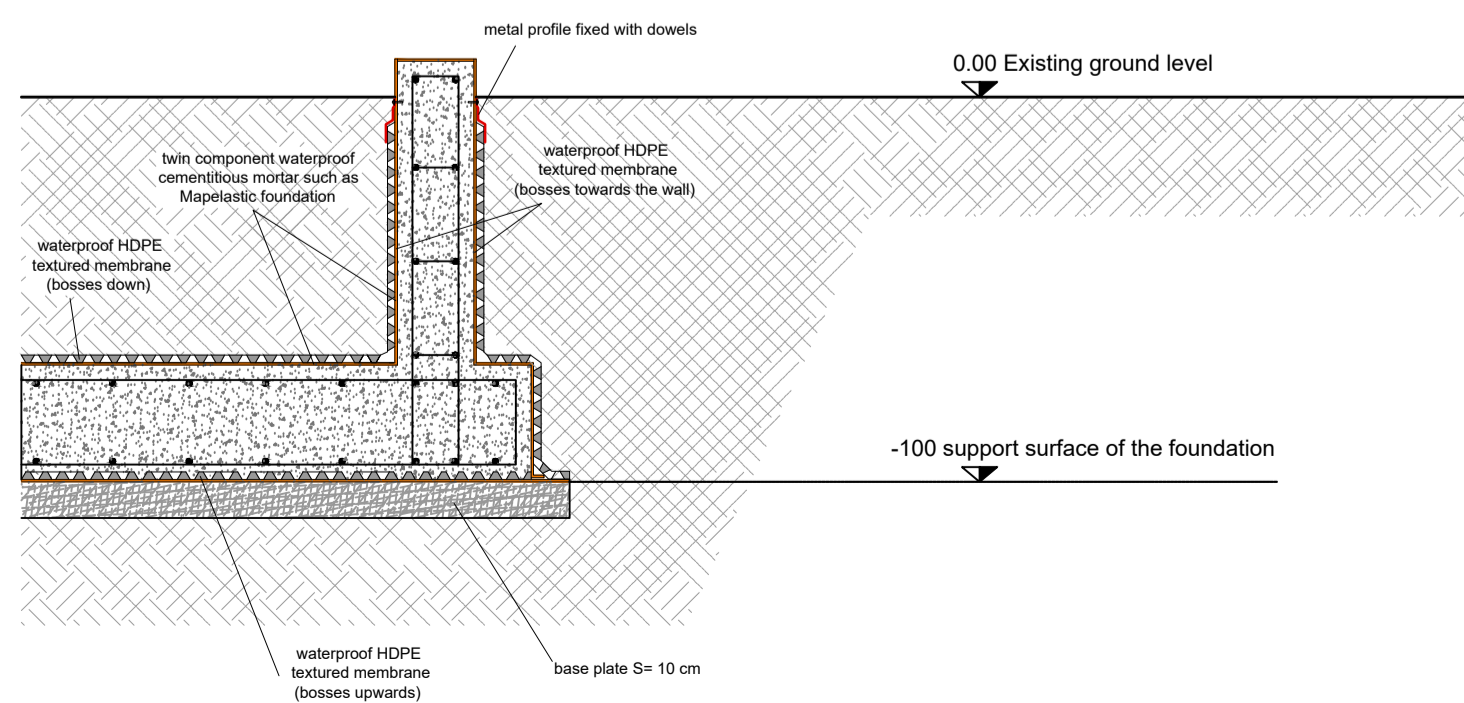
Material:
 Color: Black
 Certified mechanical resistance: 300 KN/mq
 Boss height: About 7mm
 Number of bosses per mq: About 50/mq
 Volume of air between the bosses: 4.6liters
 Thermal stability: From -40 ° C to + 80 ° C
 protected from UV rays

Physico-chemical properties:
 Resistant to chemicals, resistant to roots, non-polluting groundwater, resistant to contamination by fungi and bacteria, non-degradable

Size:
 1-1.5-2-2.5-3-3.5-4 x 20m
 1.0 m: 24 rolls
 1.5 m x 2.5 m: 12 rolls
 3.0 to 4.0 m: 16 rolls



Detail of waterproofing - external side -



REFERENCE DRAWINGS

- ST-G004: General Layout of PV plant
- ST-E001: General single line diagram of the plant
- ST-E009: Mechanical and electrical connection of meteo station
- ST-E012: Cable connection details

Rev	00	05/05/2021	FIRST ISSUE	IP	CS	AG
Project Name				Company Document ID:		
SWEETING THORNS PV PLANT				ST-C003b Part 1		
DC POWER 23.125 MW				DC POWER 28.841 MWp		
Owner				Contractor Document ID:		
WEL Solar Park 27 Limited				ST-C003b Part 1		
Job N.				Scale		
SUNNERG ENERGY & FACILITY MANAGEMENT				Sheet of Sheets		
Sunnerg Group S.R.L.				-		
Document Title				Superseded by N.		
TRANSFORMER SUBSTATION 3				Superseded by N.		
DESIGN AND CABIN FOUNDATION				Plant Area		
				Unit		
				n.a.		