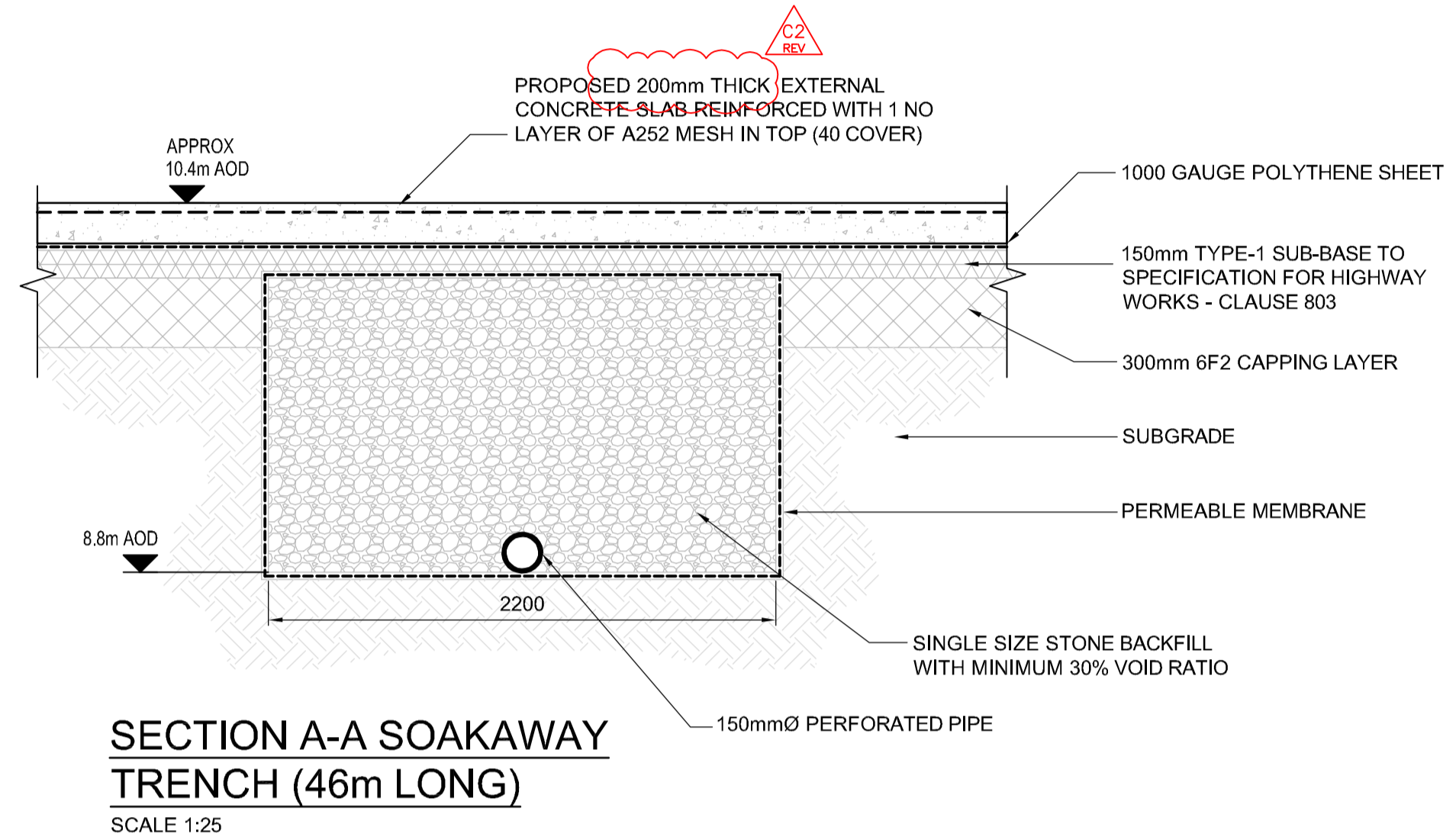
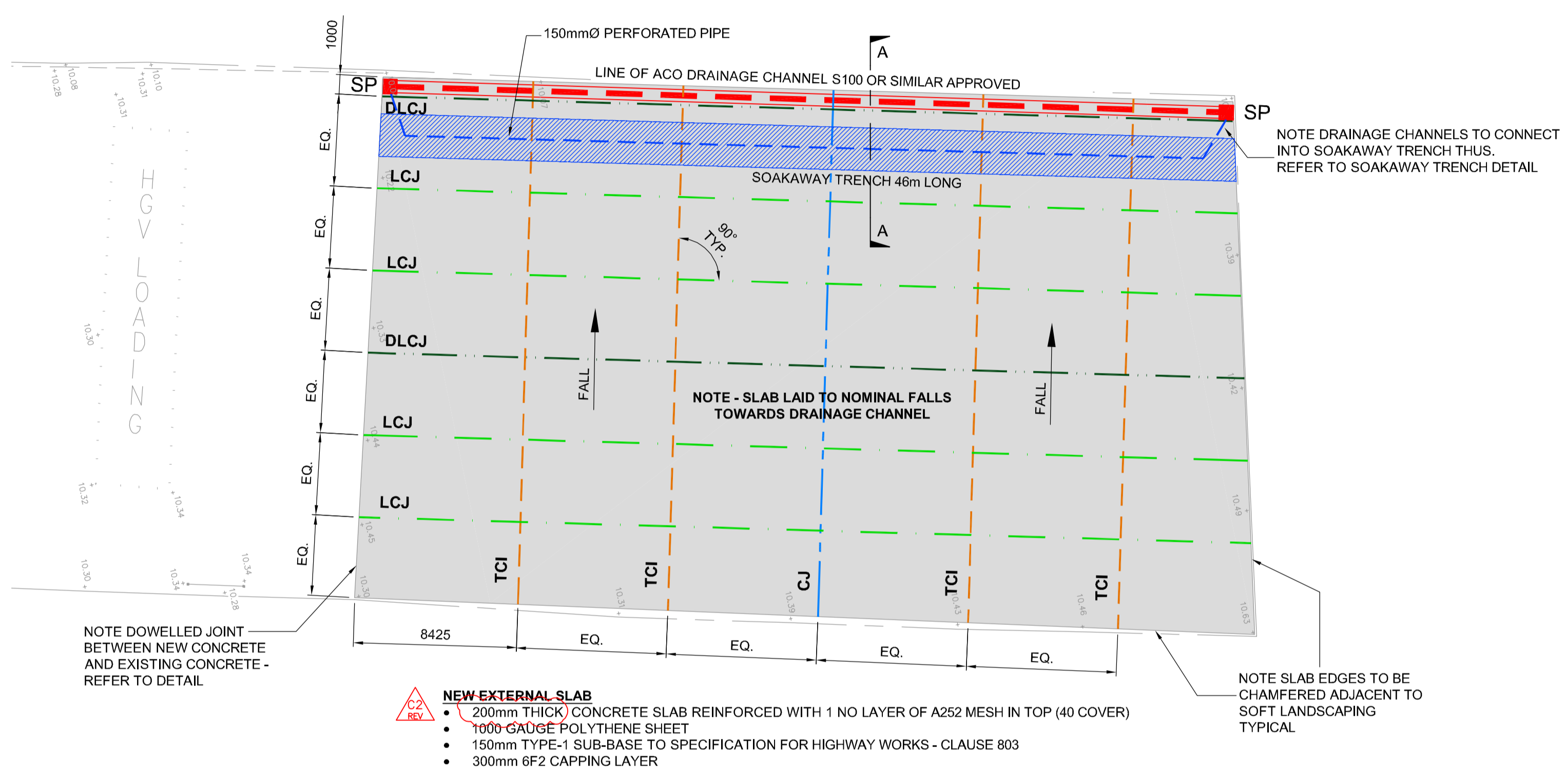


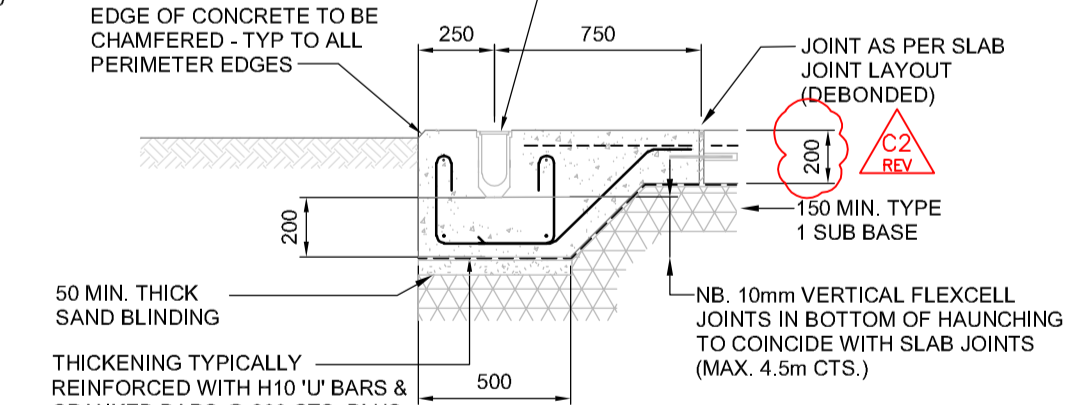
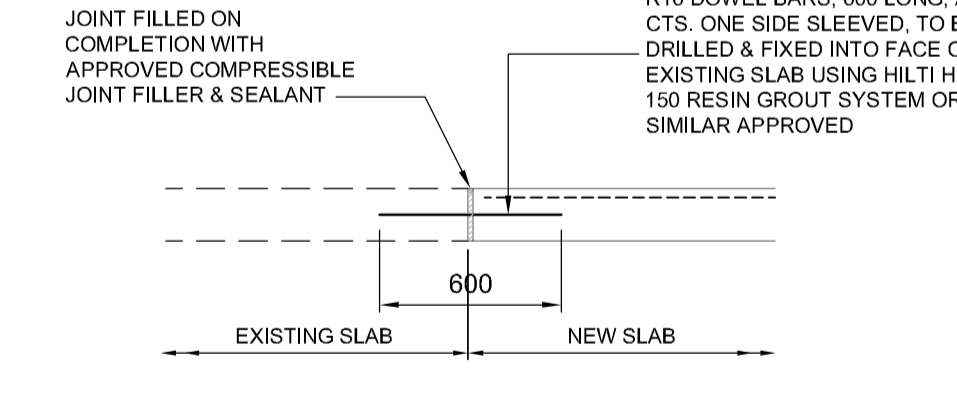
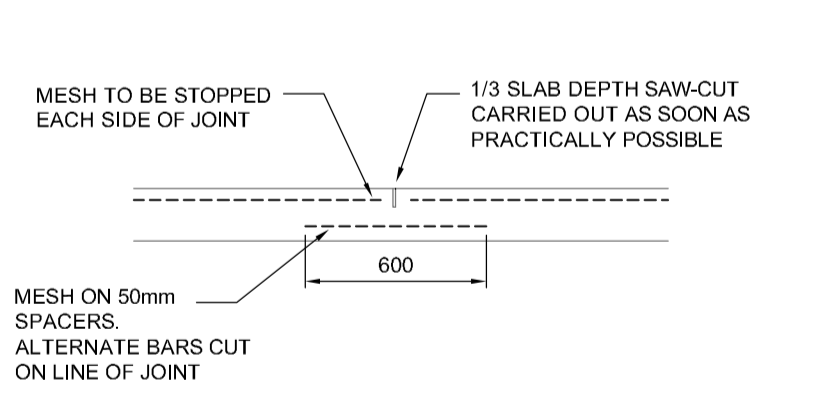
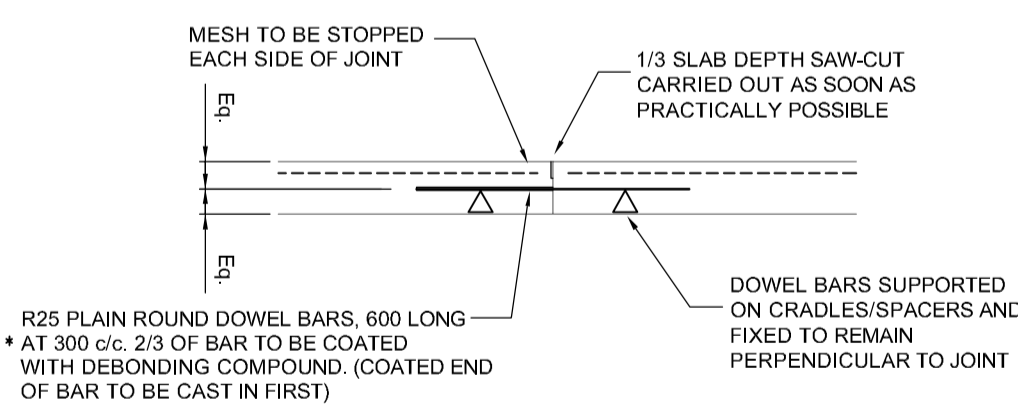
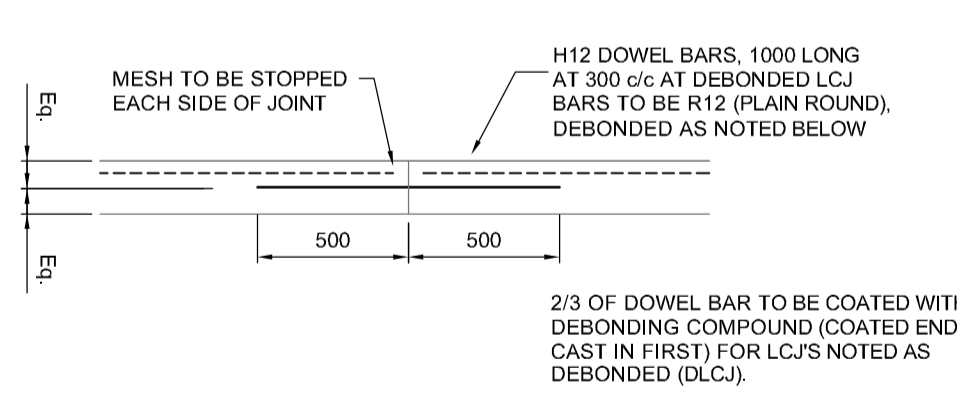
**KEY LOCATION PLAN**  
SCALE 1:500



**KEY**

- LCJ — INDICATES REQUIRED LOCATION OF LONGITUDINAL CONSTRUCTION JOINT
- DLCJ — INDICATES REQUIRED LOCATION OF DEBONDED LONGITUDINAL CONSTRUCTION JOINT
- TCI — INDICATES REQUIRED LOCATION OF TRANSVERSE CRACK INDUCER JOINT
- CJ — INDICATES REQUIRED LOCATION OF CONTRACTION JOINT

**EXTERNAL SLAB JOINT LAYOUT & DETAILS**  
SCALE 1:200



**DESIGNER RISK INFORMATION**

IN ADDITION TO THE HAZARDS/RISKS NORMALLY ASSOCIATED WITH THE TYPES OF WORK DETAILED ON THIS DRAWING, NOTE THE FOLLOWING:-

**CONSTRUCTION:**  
NO ABNORMAL RISKS

**MAINTENANCE/CLEANING:**  
NO ABNORMAL RISKS

**DECOMMISSIONING/DEMOLITION:**  
NO ABNORMAL RISKS

IT IS ASSUMED THAT ALL WORKS WILL BE CARRIED OUT BY A COMPETENT CONTRACTOR WORKING, WHERE APPROPRIATE, TO AN APPROVED METHOD STATEMENT.

- EXTERNAL SLABS**
- ALL CONCRETE WORK IS TO BE IN ACCORDANCE WITH MJM CONSULTING ENGINEERS NBS- SECTION E.
  - RELEVANT CONCRETE MIX DESIGN :-
- | CONCRETE ELEMENT | DESIGN CHEMICAL CLASS | SPEC. CLAUSE No. |
|------------------|-----------------------|------------------|
| CONCRETE SLAB    | DS1/AC-1              | 130P             |
|                  |                       |                  |
|                  |                       |                  |
- SUB-BASE TO SLABS TO BE TYPE 1 IN ACCORDANCE WITH DOT, SPECIFICATION FOR HIGHWAY WORKS
  - SLABS TO BE LAID ON 1000 GAUGE POLYETHYLENE SHEETING ON NOMINAL LAYER OF SAND BLINDING TO SUB-BASE
  - SLABS TO BE FULLY VIBRATED AND TAMPED WITH BRUSH FINISH UNLESS NOTED OTHERWISE
  - 100mm WIDE 'BULL-NOSED' STEEL FLOAT FINISH MARGIN TO BOTH SIDES OF ALL FORMED JOINTS, DRAINAGE CHANNELS & OTHER SLAB PENETRATIONS
  - SLABS TO BE CURED USING A SUITABLE IMPERVIOUS SHEET OR CURING COMPOUND IN ACCORDANCE WITH MJM CONSULTING ENGINEERS NBS SECTION E10 800
  - ALL CRACK INDUCING SAW-CUTS TO BE CARRIED OUT WITHIN 24 HOURS OF CASTING SLAB
  - EXPANSION JOINT FILLER TO BE AEROFIL BY SERVICED OR SIMILAR APPROVED. FIBREBOARD TYPE FILLERS (ie. FLEXCELL) WILL NOT BE PERMITTED
  - SEALED JOINTS TO BE FILLED WITH COLPOR 200 BY EXPANDITE OR SIMILAR APPROVED

Rev	Date	Description	HCG	HM
C2	29.03.22	SLAB THICKNESS INCREASED TO 200mm THICK FOR FUTURE PROOFING AT CLIENTS REQUEST.	HCG	HM
C1	25.03.22	ISSUED FOR CONSTRUCTION	HCG	HM
Rev	Date	Amendment		

**mjm Consulting Engineers Ltd**

Southgate House, 38 Southgate, Wakefield WF1 1TL  
T: 01924 811 000 [mjm.co.uk](http://mjm.co.uk)

Project:  
**TRAVIS PERKINS EPWORTH**

Client:



Drawing Title:  
**PROPOSED EXTERNAL SLAB LAYOUT & DETAILS**

HCG	HM	APD
MJM Ref: <b>7940</b>	Scale: <b>1:200</b>	Sheet Size: <b>A1</b>
Revision Status: <b>C2</b>	Suitability Status: <b>A</b>	Date: <b>MAR. 22</b>

Suitability Description:  
**ISSUED FOR CONSTRUCTION**

Drawing Reference:  
Project - Originator - Zone - Level - File Type - Discipline - Number  
**7940 - MJM - ZZ - 00 - DR - C - 9000**

© THIS DRAWING MAY NOT BE COPIED WITHOUT PRIOR WRITTEN PERMISSION