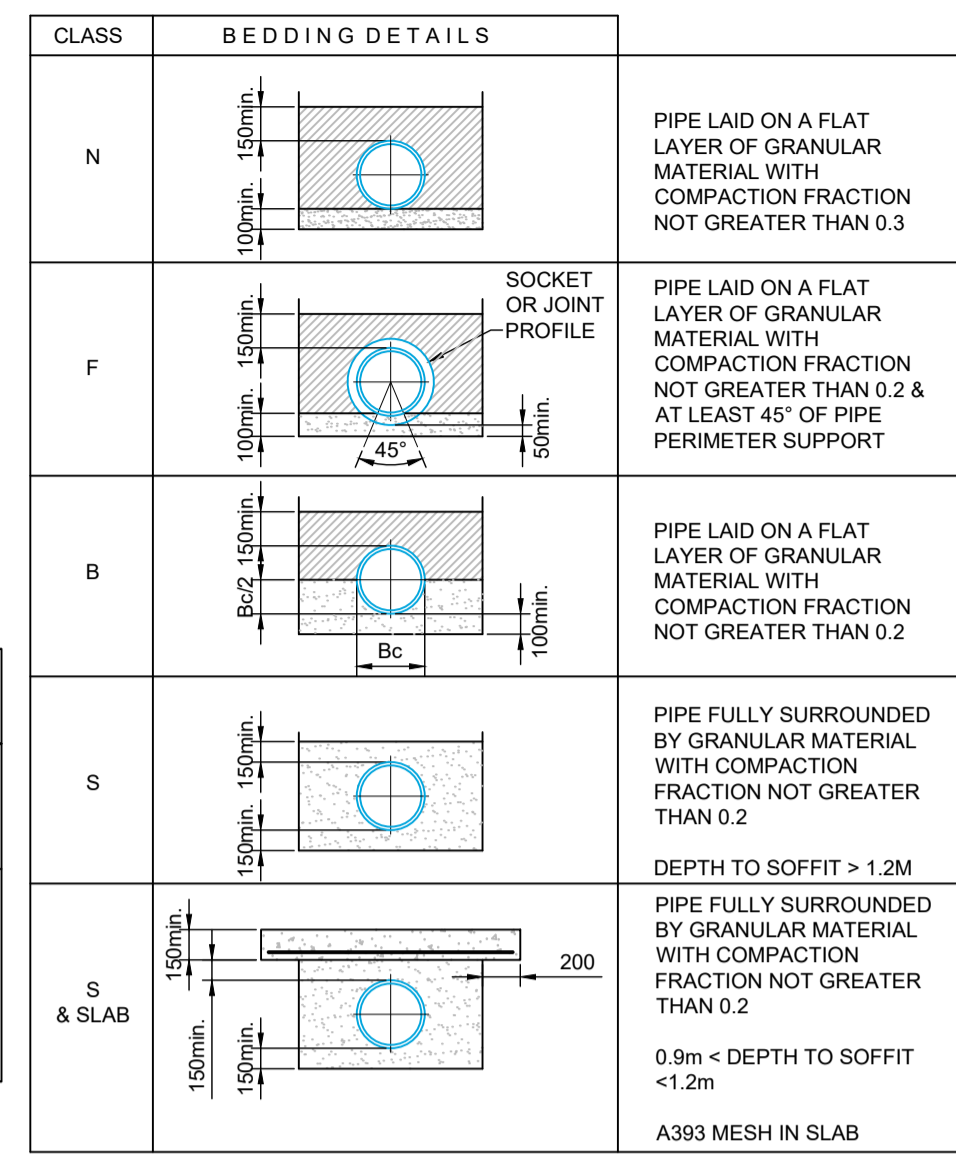


TYPICAL INSPECTION CHAMBER DETAIL - TYPE 3 (FLEXIBLE MATERIAL DETAIL)
MAXIMUM DEPTH FROM COVER LEVEL TO SOFFIT OF PIPE 3m
 (SCALE 1:20)

DETAILS BASED ON SEWERS FOR ADOPTION 7th EDITION
 DRAWINGS ARE CURRENTLY BEING UPDATED TO BE IN ACCORDANCE WITH DESIGN AND CONSTRUCTION GUIDANCE [1] ('THE CODE') VERSION 2.0 10Mar20

TYPICAL BEDDING DETAILS
 (GRANULAR MATERIAL & CONCRETE SURROUND)
 NOTES:
 1) TYPE A MATERIAL SHALL BE COMPACTED OVER THE FULL WIDTH OF THE TRENCH WITH A PLATE VIBRATOR.
 2) TYPE B FILL SHALL BE THOROUGHLY PACKED & RAMPED BY HAND TAMPING IN LAYERS NOT EXCEEDING 150mm TH BEFORE COMPACTION
 3) ALL DEPTH OF MATERIALS ARE MINIMUM COMPACTED DEPTHS & SHALL EXTEND FOR THE FULL WIDTH OF THE TRENCH
 4) ANY SOCKETS SHALL BE NOT LESS THAN 50mm ABOVE THE FLOOR OF THE TRENCH
 5) FOR CONCRETE BED & SURROUND PIPES SHALL BE LAID ON A PRE-CAST CONCRETE SETTING BLOCK, TOP FACE OF WHICH SHALL BE COVERED WITH 2 LAYERS OF COMPRESSIBLE PACKING

TRENCH WIDTH			GRAVEL SIZE	
NOMINAL INTERNAL DIAMETER (mm)	MINIMUM TRENCH WIDTH (mm)	MAXIMUM TRENCH WIDTH (mm)	NOMINAL DIAMETER (mm)	SINGLE SIZE GRAVEL (mm)
100	450	550	100	10
150	500	600	225	10, 14, 20
225	600	700	300	10, 14, 20
300	680	750	375	14, 20
375	950	1050	450	14, 20
450	1030	1150	525	14, 20
525	1100	1200	600	14, 20
600	1240	1350	675	14, 20
675	1330	1450	750	14, 20
750	1400	1500	825	14, 20
825	1490	1600	900	14, 20
900	1700	1900	1050	14, 20
1050	1850	2050	1200	2100
1200	2100	2300		



KEY

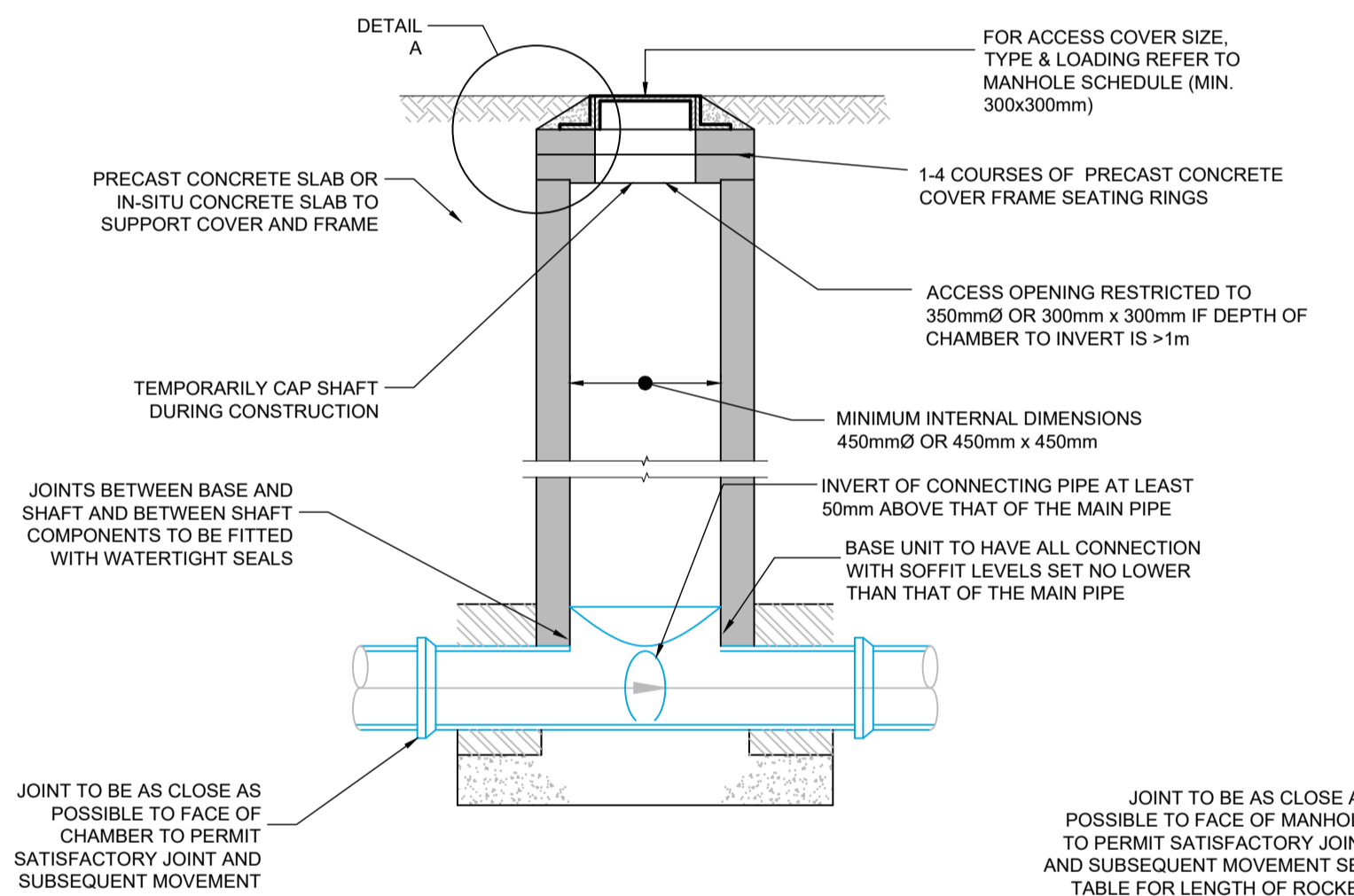
- TYPE A: GRANULAR MATERIAL
- TYPE B: SELECTED FILL
- GRANULAR MATERIAL OR SELECTED FILL CONTAINING NO STONES LARGER THAN 40mm
- C20P CONCRETE SLAB 1 LAYER A393 FABRIC IN BOTTOM FACE

NOMINAL BORE OF PIPE (mm)	THICKNESS OF COMPRESSIBLE JOINT FILLER
< 450	18
450-1200	36
> 1200	54

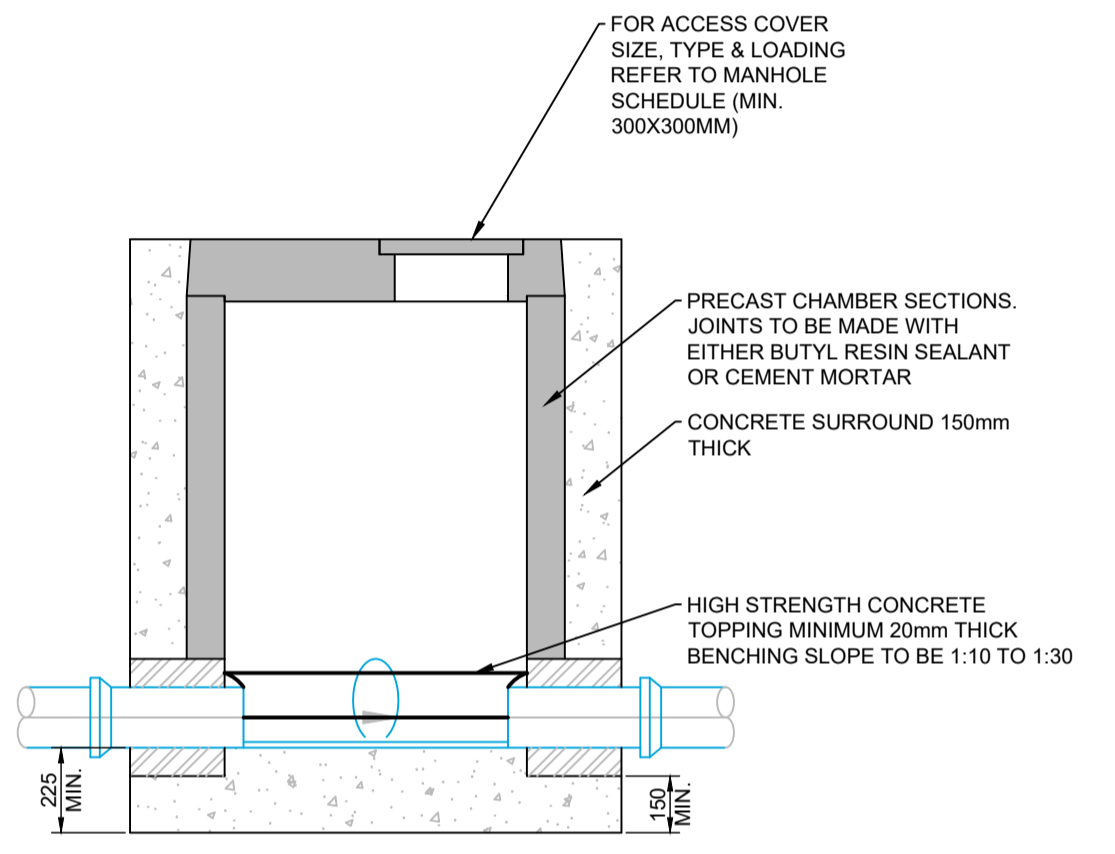
- NOTES -**
- PIPES ENTERING MANHOLES SHALL HAVE A FLEXIBLE JOINT WITHIN 600mm OF THE INSIDE FACE OF THE MANHOLE JOINING WITH A SHORT 'ROCKER PIPE'
 - GRANULITHIC CONCRETE BENCHING TO BE 20MM MINIMUM THICKNESS BROUGHT UP TO A DENSE SMOOTH FACE NEATLY SHAPED & FINISHED TO ALL BRANCH CONNECTIONS
 - THE USE OF PRECAST RECTANGULAR/CIRCULAR CONCRETE MANHOLE UNITS WITH 150MM GRADE GEN3 CONCRETE SURROUND (DESIGNED TO BRE SPECIAL DIGEST 1 CONCRETE IN AGGRESSIVE GROUND) IS PERMITTED
 - APPROVAL OF THE UNDERTAKER MUST BE GIVEN FOR INSTALLATION OF TYPES 3 AND 4 MANHOLE
 - ALL PRECAST CONCRETE SECTIONS/SLAB & IN-SITU TO BE GEN3 (DESIGNED TO BRE SPECIAL DIGEST 1 CONCRETE IN AGGRESSIVE GROUND)

CHAMBER DIAMETERS

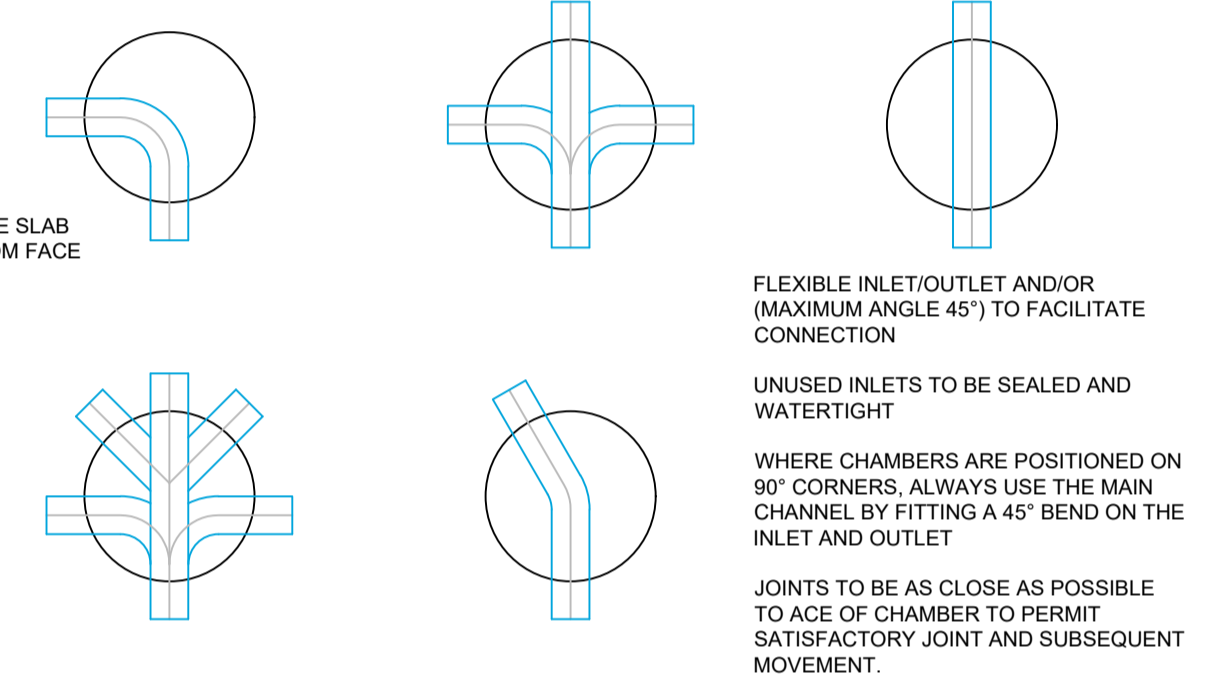
DIAMETER OF LARGEST PIPE IN MANHOLE (mm)	CHAMBER SECTION DIAMETER (mm)
<375	1200
375-450	1350
500-700	1500
750-900	1800
>900	Ø + 900



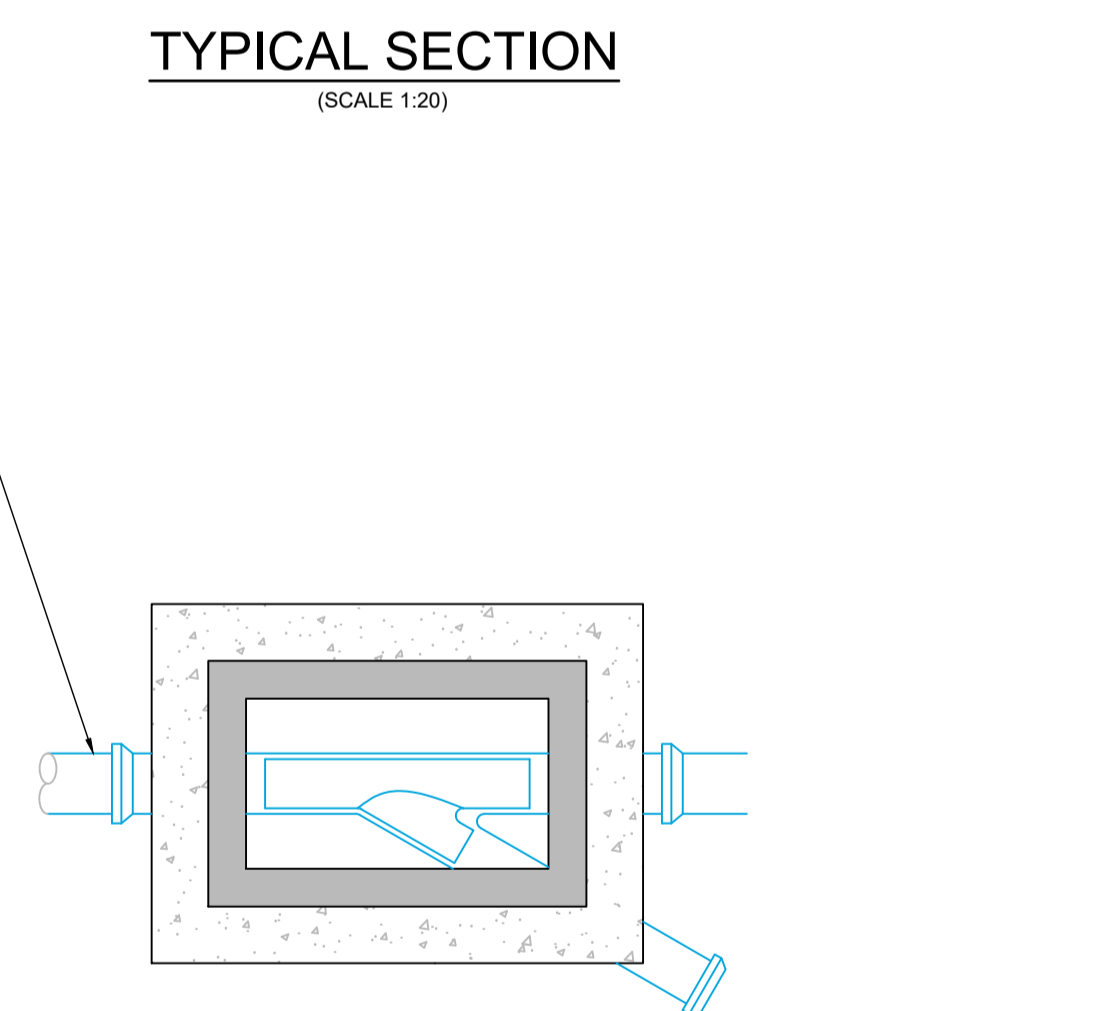
TYPICAL INSPECTION CHAMBER DETAIL - TYPE 3 (RIGID MATERIAL DETAIL)
MAXIMUM DEPTH FROM COVER LEVEL TO SOFFIT OF PIPE 3m
 (SCALE 1:20)



PLASTIC PIPE BEDDING DETAIL
<1200mm COVER
 (SCALE 1:20)



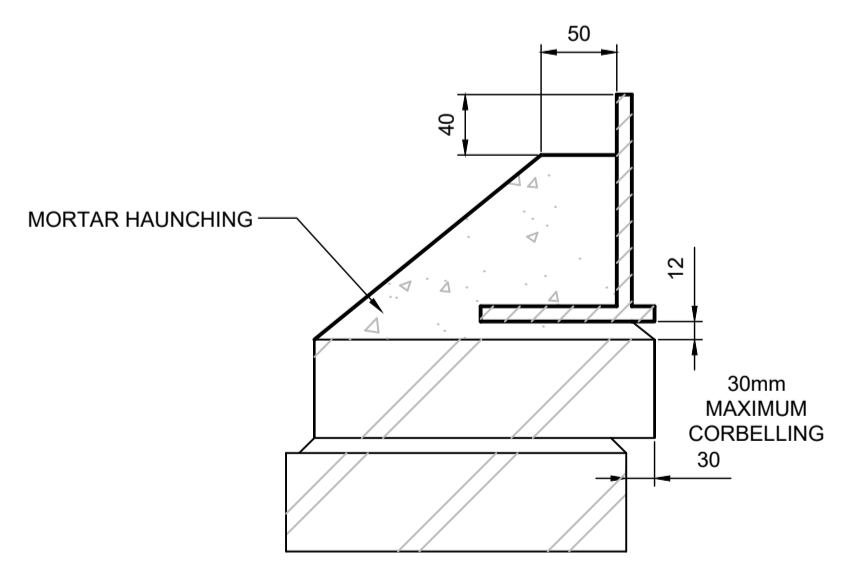
ALTERNATIVE BASE LAYOUTS FOR TYPE 3 CHAMBERS
 (SCALE 1:20)



TYPICAL SECTION
 (SCALE 1:20)

PLAN VIEW
 (SCALE 1:20)

TYPICAL INSPECTION CHAMBER DETAIL - TYPE 3 (RIGID MATERIAL DETAIL)
MAXIMUM DEPTH FROM COVER LEVEL TO SOFFIT OF PIPE 3m NO VEHICLE LOADING OR LIGHT VEHICLE LOADING
 (SCALE 1:20)



DETAIL A
 (SCALE 1:10)

GENERAL

- THIS DRAWING IS COPYRIGHT AND THE PROPERTY OF BELL MUNRO CONSULTING LTD. THE DRAWING MUST NOT BE REPRODUCED IN PART OR IN WHOLE WITHOUT PRIOR WRITTEN AUTHORITY.
- THIS DRAWING MUST NOT BE SCALED BY EITHER CONTRACTORS OR OTHER CONSULTANTS ANY DIMENSIONAL OR SETTING-OUT DISCREPANCIES ARE TO BE REPORTED TO BELL MUNRO CONSULTING PRIOR TO CONSTRUCTION / FABRICATION COMMENCING.
- THIS DRAWING IS TO BE READ IN CONJUNCTION WITH ALL RELEVANT ENGINEERS AND ARCHITECTS INFORMATION.
- WHERE NOT STATED ELSEWHERE, THE MINIMUM STANDARDS TO BE ADOPTED ARE THOSE GIVEN IN BS 8000 AND THE BUILDING REGULATIONS APPROVED DOCUMENT A.
- REFER TO DRAWINGS BY OTHERS FOR: MASONRY SETTING OUT, FIRE PROTECTION, STACK LOCATIONS / SERVICE PENETRATIONS, DPM / INSULATION / FINISHES DETAILS.

P1	01.12.22	PRELIMINARY ISSUE	DA	DA	AB
Rev.	Date	Description	By	Chk.	App.

Consulting Civil and Structural Engineers
 J29 The Avenues
 Eleventh Avenue North
 Team Valley Trading Estate
 Gateshead
 NE11 0NJ
 Tel: 0191 487 8214
 Fax: 0191 491 3394
 E-mail: info@bellmunro.co.uk
 Client

HOUSING 21
 Project

JELlico COURT

Job No.	Checked by	Created by	Approved by	Scale @ A1
186-22	DA	DA	AB	1:20
Document types		Document status		
Title		D4 - TENDER		
JEL-BMC-XX-XX-DR-S-0514		Rev. Date of issue		
DRAINAGE CONSTRUCTION DETAILS		P01 01.12.22 en		

BMC
 BELL MUNRO CONSULTING
 (NORTH EAST) LIMITED

COPYRIGHT OF THIS DRAWING IS VESTED IN BELL MUNRO CONSULTING LIMITED. IT SHALL NOT BE USED WITHOUT PERMISSION BY ANYONE FOR ANY PURPOSE. DO NOT SCALE THIS DRAWING ELECTRONICALLY OR MANUALLY.