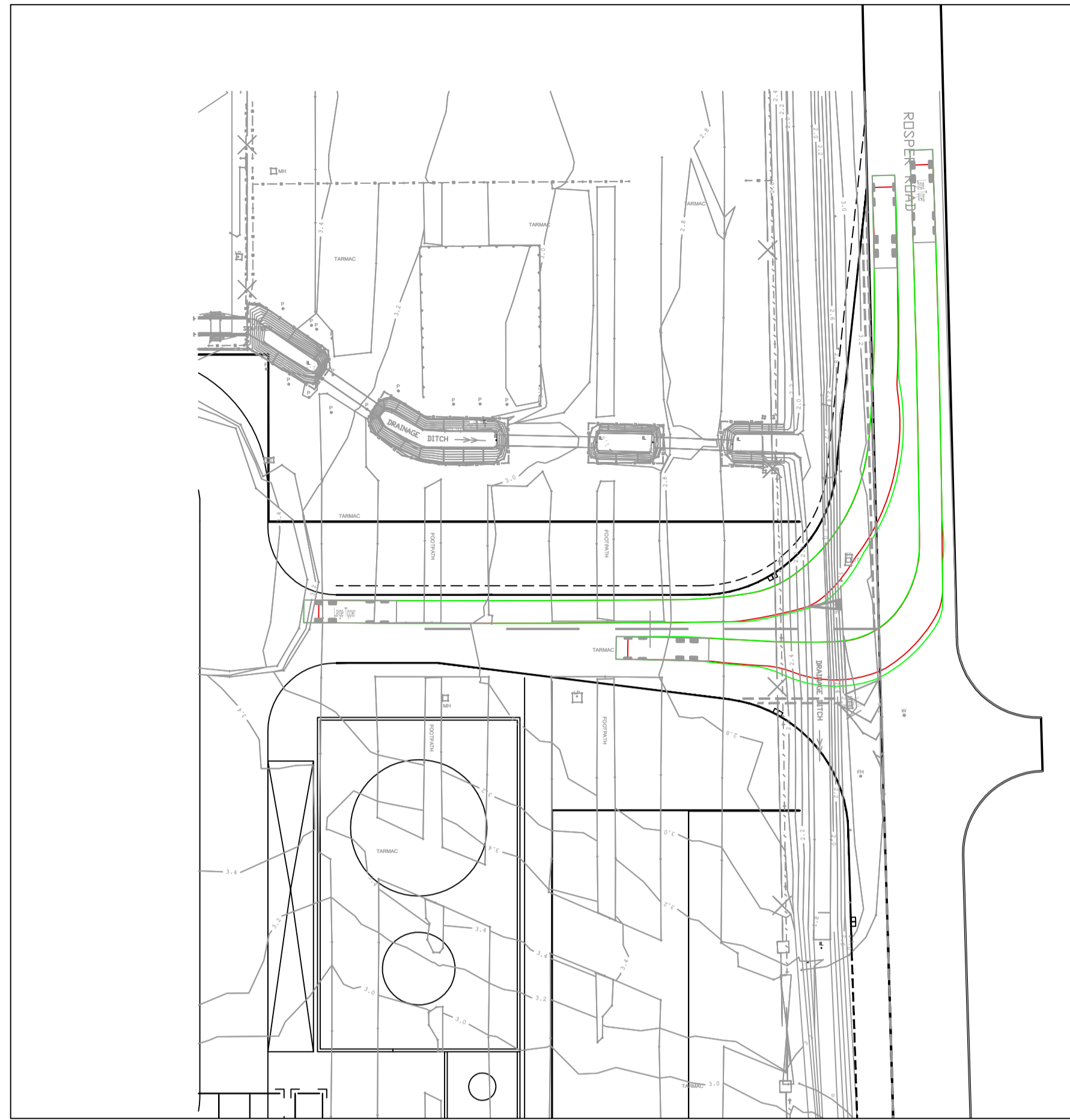




400Tn Mobile Crane Swept Path

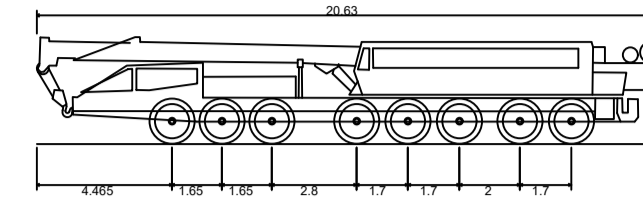


Large Tipper Swept Path
Ingress & Egress Rosper Rd North

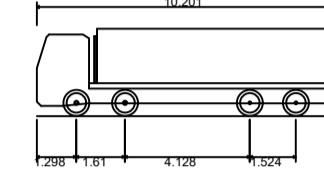


Large Tipper Swept Path
Ingress & Egress Rosper Rd South

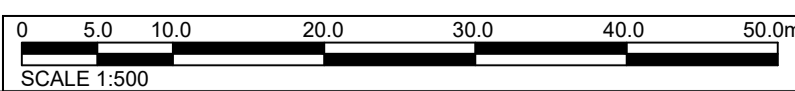
- Key:
- Wheels Swept path / Ahead Movement
 - Chassis Swept path / Ahead Movement



400T Mobile Crane
 Overall Length 20.63m
 Overall Width 3.00m
 Overall Body Height 3.53m
 Min Body Ground Clearance 0.740m
 Max Track Width 3.000m
 Lock to lock time 5.00s
 Wall to Wall Turning Radius 16.500m



Large Tipper
 Overall Length 10.20m
 Overall Width 2.45m
 Overall Body Height 2.85m
 Min Body Ground Clearance 0.341m
 Track Width 2.471m
 Lock to lock time 6.00s
 Kerb to Kerb Turning Radius 11.550m



PROJECT
Humber Zero

CLIENT
VPI Immingham

CONSULTANT
AECOM
ALDGATE TOWER
2 LEMAN STREET
LONDON, E1 8FA, UK
www.aecom.com

NOTES
Proposed junction requires to accommodate swept path for largest construction design vehicle (400Tn mobile crane) approaching from Rosper Road on both directions.

SUITABILITY
S4 FOR STAGE APPROVAL

ISSUE/REVISION

DRAWN:	CHECKED:	APPROVED:
P03	26/01/2023	ISSUE FOR APPROVAL
P02	23/01/2023	ISSUE FOR APPROVAL
P01	09/01/2023	ISSUE FOR APPROVAL
IR	DATE	DESCRIPTION

KEY PLAN

PROJECT NUMBER
60668866

SHEET TITLE
Proposed Access Junction
Swept Path Analysis

SHEET NUMBER
60668866-ACM-XX-XX-DR-CE-0003

SCALE: 1:500 @A1 REV: P03

This drawing has been prepared for the use of AECOM's client. It may not be used, modified, reproduced or relied upon by third parties, except as agreed by AECOM or as required by law. AECOM accepts no responsibility, and denies any liability, whatsoever, to any party that uses or relies on this drawing without AECOM's express written consent. Do not scale this document. All measurements must be obtained from the stated dimensions.