

**NOTES:**  
 1. CONTAINS ORDINANCE SURVEY DATA CROWN COPYRIGHT AND DATABASE RIGHTS 2021 - ORDINANCE SURVEY 0100316173.  
 2. COORDINATES SHOWN RELATE TO OS FLAT GRID U.N.O.  
 3. THE SITE IS CENTERED AT NGR: TA 16678 17482 E  
 4. DRAWING IS FOR PLANNING PURPOSES ONLY.

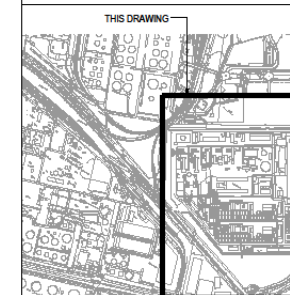
**SECTION / ELEVATION REFERENCE DRAWINGS:**

SECTION	REFERENCE DRAWING
G-G'	415000-00201-8820-01-0014
H-H'	415000-00201-8820-01-0014
J-J'	415000-00201-8820-01-0014
K-K'	415000-00201-8820-01-0014
L-L'	415000-00201-8820-01-0015
M-M'	415000-00201-8820-01-0015
N-N'	415000-00201-8820-01-0016
P-P'	415000-00201-8820-01-0016
Q-Q'	415000-00201-8820-01-0017
R-R'	415000-00201-8820-01-0017
S-S'	415000-00201-8820-01-0015
T-T'	415000-00201-8820-01-0015
U-U'	415000-00201-8820-01-0015
V-V'	415000-00201-8820-01-0018
W-W'	415000-00201-8820-01-0018
X-X'	415000-00201-8820-01-0018

**KEY**

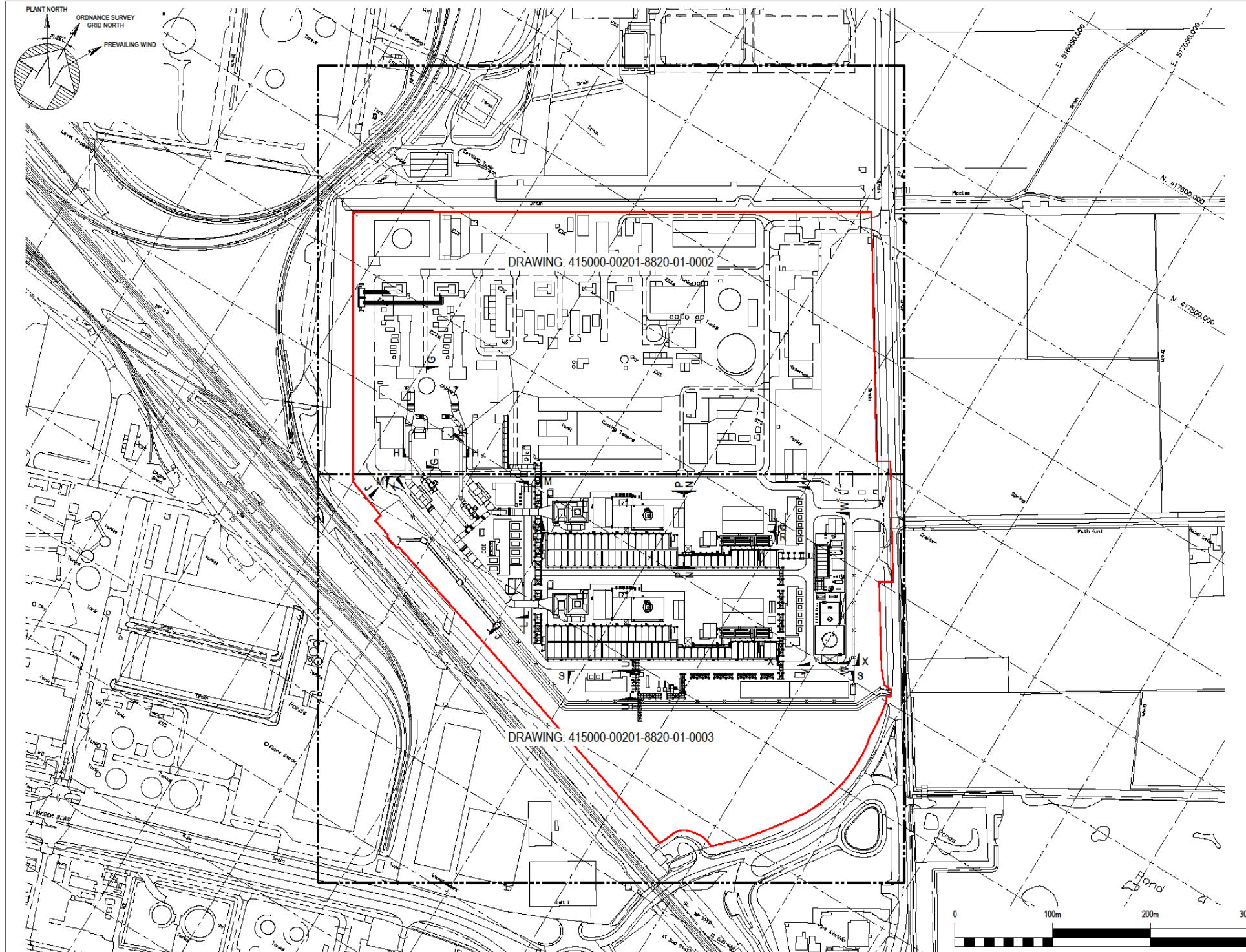
— SITE RED-LINE BOUNDARY

**KEY PLAN**



**NOTES**

DRAWING NOT TO SCALE



REV	DATE	PURPOSE	DRAWN	DRAFT	CHK	DESIGNED	ENR	CHK	APPROVED	REF. DRAWING No	REFERENCE DRAWING TITLE	WORLEY PROJECT No.
1	15/02/23	FOR USE	NG	CFT	NG	CFT	AG			415000-00201-8820-01-0018	HZ-VPI-1 PCC PROJECT - PARAMETER / ZONING PLANNING DRAWING - SECTIONS - SHEET 5	A1 SHT
										415000-00201-8820-01-0017	HZ-VPI-1 PCC PROJECT - PARAMETER / ZONING PLANNING DRAWING - SECTIONS - SHEET 4	
										415000-00201-8820-01-0016	HZ-VPI-1 PCC PROJECT - PARAMETER / ZONING PLANNING DRAWING - SECTIONS - SHEET 3	
										415000-00201-8820-01-0015	HZ-VPI-1 PCC PROJECT - PARAMETER / ZONING PLANNING DRAWING - SECTIONS - SHEET 2	
										415000-00201-8820-01-0014	HZ-VPI-1 PCC PROJECT - PARAMETER / ZONING PLANNING DRAWING - SECTIONS - SHEET 1	
0	03/02/23	FOR USE	NG	CFT	NG	CFT	AG			415000-00201-8820-01-0013	HZ-VPI-1 PCC PROJECT - PROPOSED GENERAL ARRANGEMENT - ISOMETRIC VIEW	
A	04/10/22	FOR REVIEW	NG	CFT	NG	CFT	AG			415000-00201-8230-01-0002	HZ-VPI-1 PCC PROJECT - PLOT PLAN	
										415000-00201-8230-01-0001	HZ-VPI-1 PCC PROJECT - SITE PLAN	
												415000-00201



DRG TITLE  
 HZ-VPI-1 PCC PROJECT  
 PARAMETER / ZONING PLANNING DRAWING  
 KEY PLAN

DRG No 415000-00201-8820-01-0001 REV 1

**ISSUE PURPOSE**

FINAL

**PROJECT NUMBER**

60668866

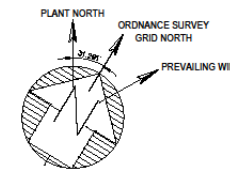
**FIGURE TITLE**

Proposed VPI Carbon Capture Plant  
 Parameters Plan

**FIGURE NUMBER**

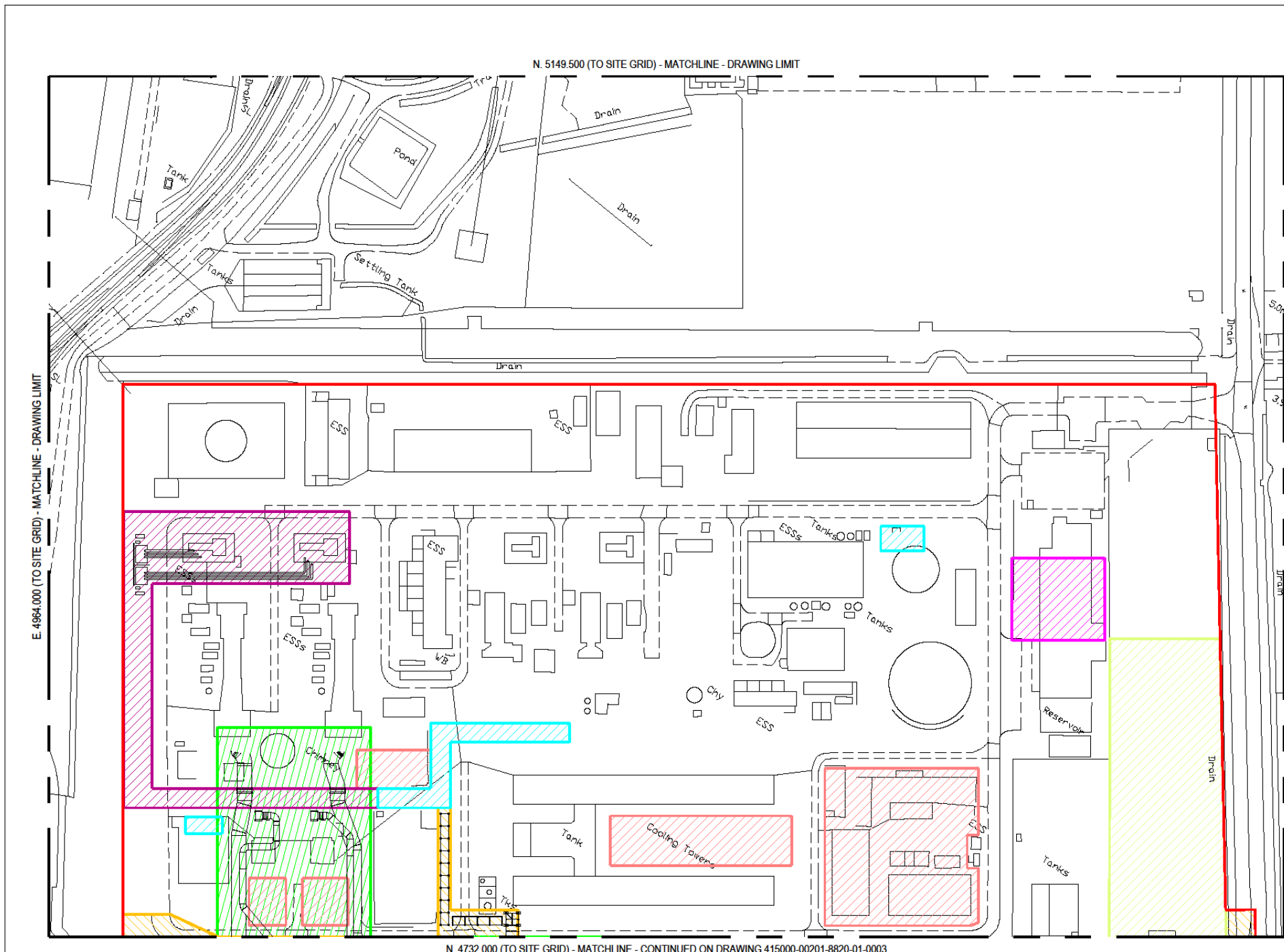
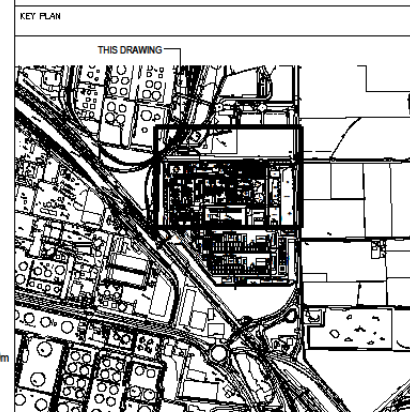
Figure 3.4a

This drawing has been prepared for the use of AECOM's client. It may not be used, modified, reproduced or relied upon by third parties, except as agreed by AECOM or as required by law. AECOM accepts no responsibility, and denies any liability whatsoever, to any party that uses or relies on this drawing without AECOM's express written consent. Do not scale this document. All measurements must be obtained from the stated dimensions.



- NOTES:**
1. CONTAINS ORDNANCE SURVEY DATA CROWN COPYRIGHT AND DATABASE RIGHTS 2021 - ORDNANCE SURVEY 010031873.
  2. COORDINATES SHOWN RELATE TO OS FLAT GRID U.N.O.
  3. THE SITE IS CENTERED AT NGR: TA 16678 17462 E
  4. DRAWING IS FOR PLANNING PURPOSES ONLY.

- KEY**
- SITE RED-LINE BOUNDARY
  - TEMPORARY CONSTRUCTION LAYDOWN
  - FLUE GAS HANDLING
  - UTILITIES / ACCESS
  - TEMPORARY CAR PARK
  - HV TRANSFORMERS / TIE-INS
  - PIPING TIE-INS
  - CONTROL ROOM MODIFICATION
  - TEMPORARY WORK AREA ACCESS (UNSHADED AREAS WITHIN RED-LINE BOUNDARY)



REV	DATE	PURPOSE	DRAWN	DRAFT CHK	DESIGNED	ENG CHK	APPROVED	REF DRAWING No	REFERENCE DRAWING TITLE
1	15/02/23	FOR USE	NG	CFT	NG	CFT	AG	415000-00201-8820-01-0001	HZ-VPI-1 PCC PROJECT - PARAMETER / ZONING PLANNING - KEY PLAN
0	03/03/23	FOR USE	NG	CFT	NG	CFT	AG	415000-00201-8230-01-0002	HZ-VPI-1 PCC PROJECT - PLOT PLAN
A	04/10/22	FOR REVIEW	NG	CFT	NG	CFT	AG	415000-00201-8230-01-0001	HZ-VPI-1 PCC PROJECT - SITE PLAN

ENGINEERING AND PERMIT STAMPS (As Required)

**Worley**

WORLEY PROJECT No.  
415000-00201

CUSTOMER

**HUMBERZERO**

**VPI Immingham**

DRG TITLE  
HZ-VPI-1 PCC PROJECT  
PARAMETER / ZONING PLANNING DRAWING  
PLAN - SHEET 1

DRG No 415000-00201-8820-01-0002

REV 1

NOTES  
DRAWING NOT TO SCALE

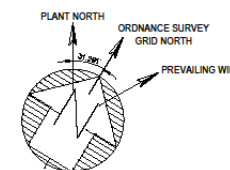
ISSUE PURPOSE  
FINAL  
PROJECT NUMBER  
60668866

FIGURE TITLE  
Proposed VPI Carbon Capture Plant  
Parameters Plan

FIGURE NUMBER  
Figure 3.4b

This drawing has been prepared for the use of AECOM's client. It may not be used, modified, reproduced or relied upon by third parties, except as agreed by AECOM or as required by law. AECOM accepts no responsibility, and denies any liability whatsoever, to any party that uses or relies on this drawing without AECOM's express written consent. Do not scale this document. All measurements must be obtained from the stated dimensions.

Revision: 1 Drawn: ER Checked: LC Approved: KC Date: 2023-02-17  
Filename: \\na.aecomnet.com\fs\EMEA\Basingsbroke\UKBAS\Legacy\UKBAS\PFILW001\4400 - Management Services\5004 - Information Systems\60568834 - SizeWell\Planning Application 2023\02\_Map\H\_Z\_ES\_3\_4b\_Proposed\_VPI\_Carbon\_Capture\_Parameters\_Plan\_20230217\_ER\_v1.mxd

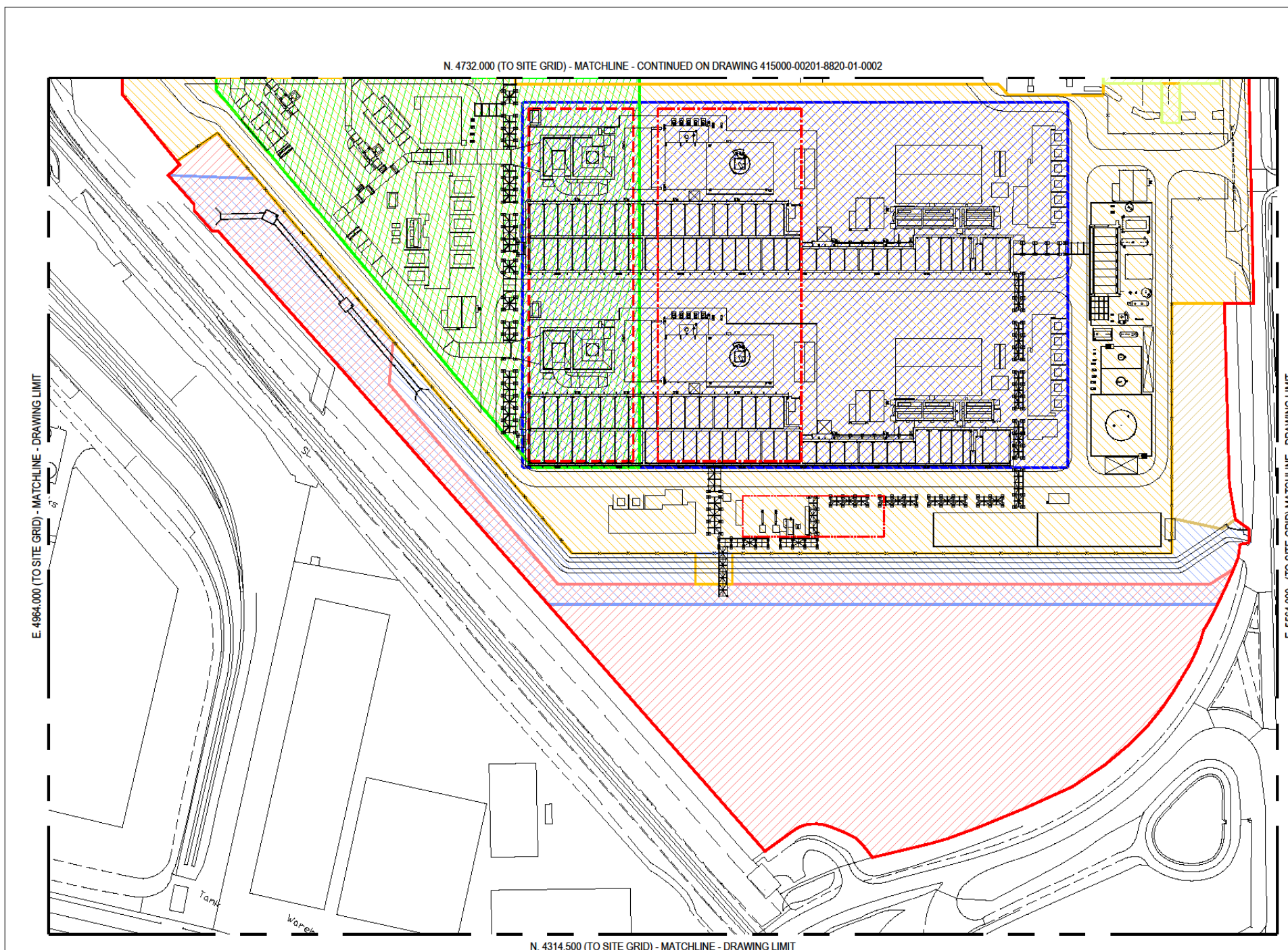


- NOTES:**
1. CONTAINS ORDNANCE SURVEY DATA CROWN COPYRIGHT AND DATABASE RIGHTS 2021 - ORDNANCE SURVEY 0100031673.
  2. COORDINATES SHOWN RELATE TO OS FLAT GRID U.N.O.
  3. THE SITE IS CENTERED AT NGR: TA 16678 17462 E
  4. DRAWING IS FOR PLANNING PURPOSES ONLY.

**KEY**

- SITE RED-LINE BOUNDARY
- CARBON CAPTURE PLANT
- TEMPORARY CONSTRUCTION LAYDOWN
- DITCH AND EASEMENT (INCLUDING TEMPORARY DITCH CROSSINGS FOR CONSTRUCTION ACCESS, TO BE REMOVED UPON COMPLETION OF CONSTRUCTION)
- FLUE GAS HANDLING
- UTILITIES / ACCESS
- SITE OFFICES AND WELFARE
- TEMPORARY CAR PARK
- ABSORBER TOWER LIMITS OF DEVIATION WITHIN CC PLANT
- STRIPPER COLUMN LIMITS OF DEVIATION WITHIN CC PLANT
- CO2 VENT STACK LIMITS OF DEVIATION WITHIN CC PLANT
- TEMPORARY WORK AREA ACCESS (UNSHADED AREAS WITHIN RED-LINE BOUNDARY)

**KEY PLAN**



REV	DATE	PURPOSE	DRAWN	DRAFT CHK	DESIGNED	ENR CHK	APPROVED	REF DRAWING No	REFERENCE DRAWING TITLE
1	15/02/23	FOR USE	NG	CFT	NG	CFT	AG	415000-00201-8820-01-0001	HZ-VPI-1 PCC PROJECT - PARAMETER / ZONING PLANNING - KEY PLAN
0	03/02/23	FOR USE	NG	CFT	NG	CFT	AG	415000-00201-8230-01-0002	HZ-VPI-1 PCC PROJECT - PLOT PLAN
A	04/10/22	FOR REVIEW	NG	CFT	NG	CFT	AG	415000-00201-8230-01-0001	HZ-VPI-1 PCC PROJECT - SITE PLAN

 WORLEY PROJECT No. 415000-00201	ENGINEERING AND PERMIT STAMPS (As Required)	CUSTOMER  	DRG TITLE HZ-VPI-1 PCC PROJECT PARAMETER / ZONING PLANNING DRAWING PLAN - SHEET 2
*This drawing is prepared solely for the use of the contractual customer of Worley and Worley assumes no liability to any other party for any representations contained in this drawing.*			DRG No 415000-00201-8820-01-0003 REV 1

**NOTES**  
DRAWING NOT TO SCALE

**ISSUE PURPOSE**

FINAL  
PROJECT NUMBER  
60668866

FIGURE TITLE  
Proposed VPI Carbon Capture Plant  
Parameters Plan

FIGURE NUMBER  
Figure 3.4c

This drawing has been prepared for the use of AECOM's client. It may not be used, modified, reproduced or relied upon by third parties, except as agreed by AECOM or as required by law. AECOM accepts no responsibility, and denies any liability whatsoever, to any party that uses or relies on this drawing without AECOM's express written consent. Do not scale this document. All measurements must be obtained from the stated dimensions.