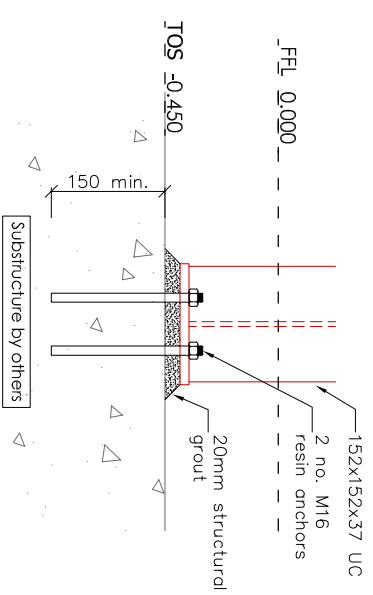
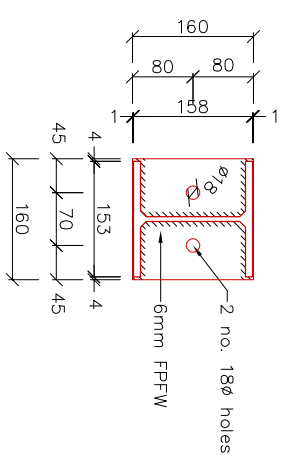
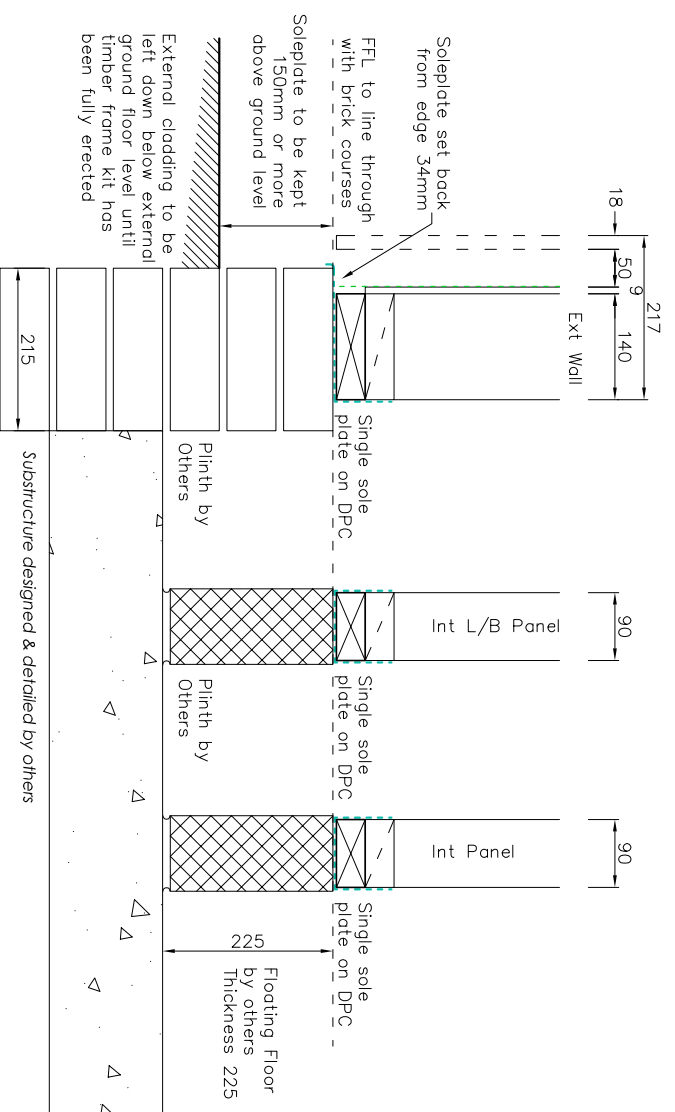
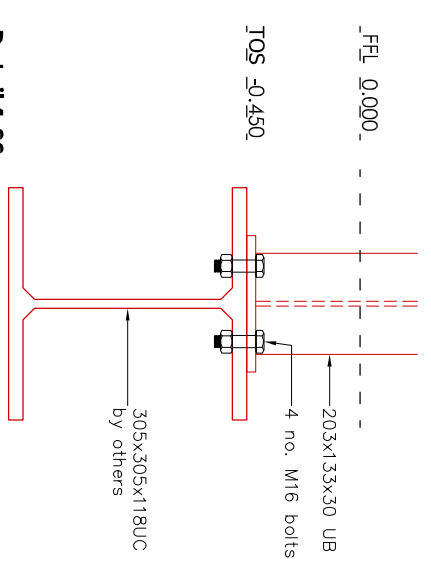
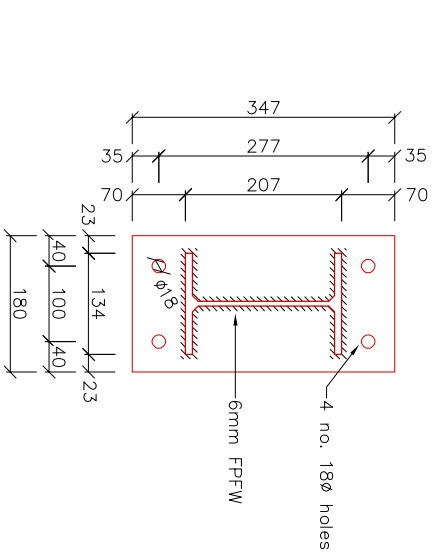


**GENERAL NOTES**  
All dimensions are to be checked on site before work commences. Figured dimensions to be taken in preference to scaled dimensions. Any discrepancies should be reported to the design office immediately. **If in doubt please ASK.** © Copyright reserved.

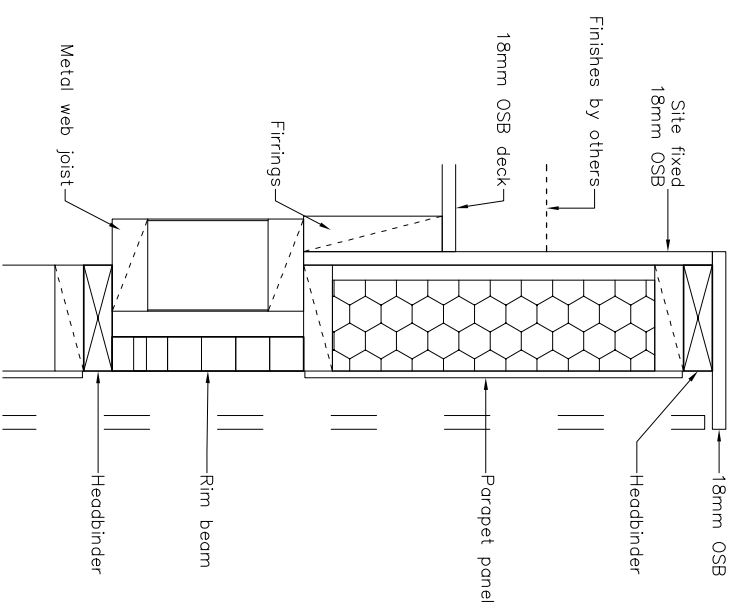
**Detail 1.01 - Typical Sole Plate Detail**  
Single layer of sole plate to be placed over DPC's and fixed as per the notes.



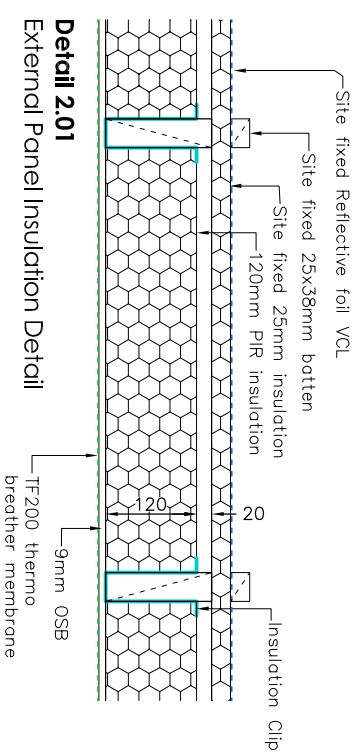
**Detail 1.02**  
**Steel Baseplate Detail**  
Baseplate to be fixed to substructure with 2 no. M16 resin anchors.  
Substructure design by others.



**Detail 1.03**  
**Steel Baseplate Detail**  
Baseplate to be fixed to steel ground beam (by others) with 4 no. M16 bolts.  
Substructure design by others.



**Detail 4.01**  
**Parapet Detail**  
Fix parapet panel to top of rim beam.  
Parapet panel to be sheathed internally with site fixed 18mm OSB.



**Detail 2.01**  
**External Panel Insulation Detail**



**turner**  
TIMBER

Rev.	Date	Remarks	Initial
B	9.5.22	General amendments to architects revised drawings	NA
A	20.4.22	Steel details added / amended	NA

Drawing Status:	APPROVAL	Drawn:	NA
Title:	General Details	Checked:	NA
Project:	Brook Lane, Scawby Brook	Scale:	1:10
Client:	Mr Mike Hill	Size:	A3
Drawing No:	22009 - TF-900	Rev:	B
		Date:	21.3.21