

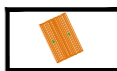



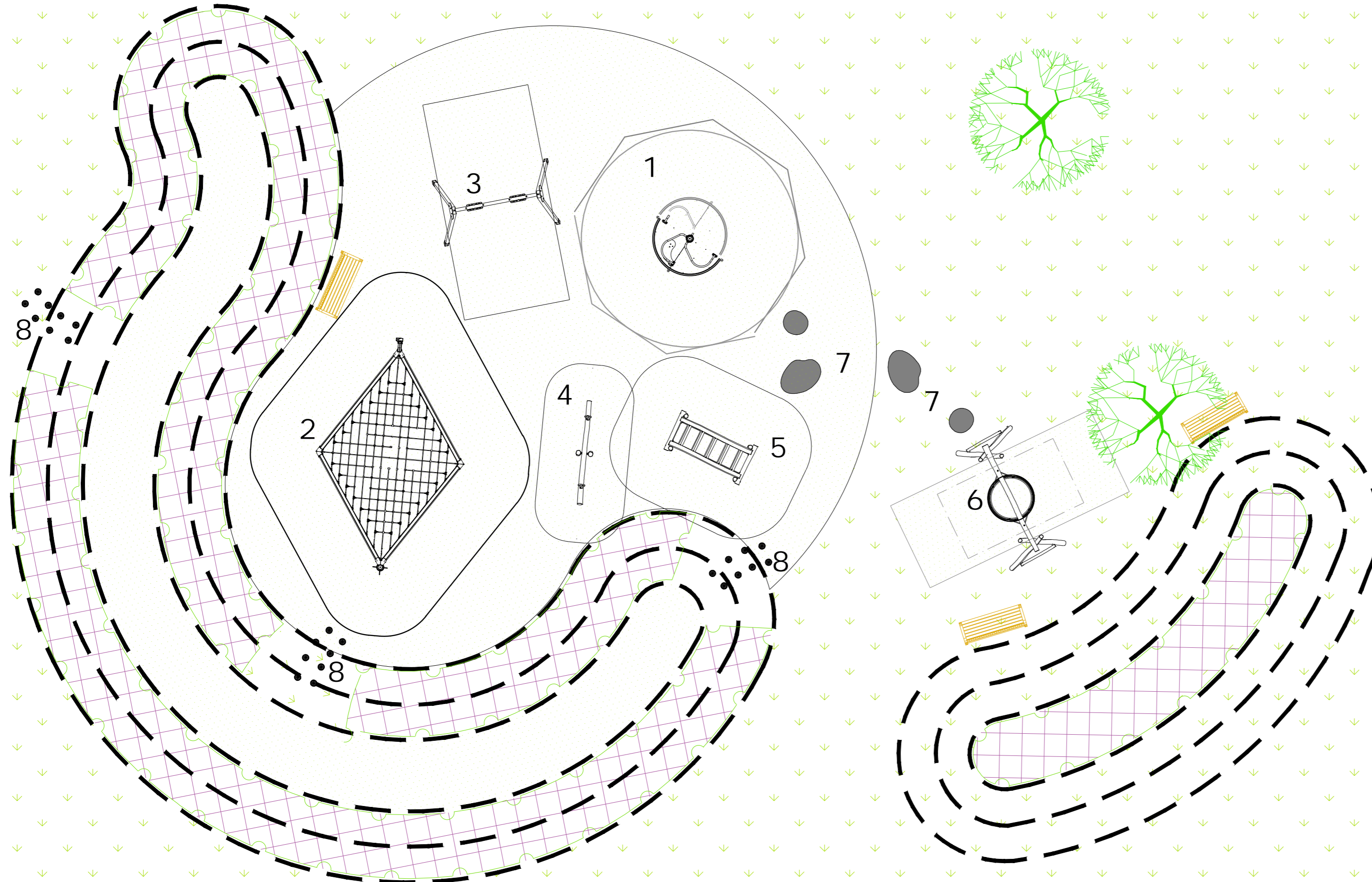
Play Equipment Key



1. J2409 Inclusive roundabout by Proludic., or similar.
2. J57001 climbing structure, by Proludic, or similar.
3. J450 double swing with flat-seats, by Proludic, or similar.
4. J4920 see-saw, by Proludic, or similar.
5. J4900 timber bridge unit, by Proludic, or similar.
6. J491 Origin Pod Swing, by Proludic, or similar.
7. Glacial boulders by Proludic, or similar
8. Timber stepping logs, by Proludic, or similar.

Grasslok rubber safety tiles, or similar, indicated by green stipple.

All contours shown at 300mm above existing ground level.

-  Proposed sensory planting using nectar-rich species of proven biodiversity value.
-  Proposed timber benches.
-  Proposed timber picnic tables.
-  Proposed timber litter bins.



	<p>Great Aylesbury 100 Westmoorland 2018 500 01753 24130 info@pdpnumera.co.uk</p>	
<p>Client Keepmoat Homes</p>		
<p>Project Lincolnshire Lakes, Scunthorpe</p>		
<p>Drawing title Central Play Area Proposals</p>		
<p>1:100 @ A2</p>		<p>Drawn by PDP</p>
<p>Drawing No. C-1987-16</p>		