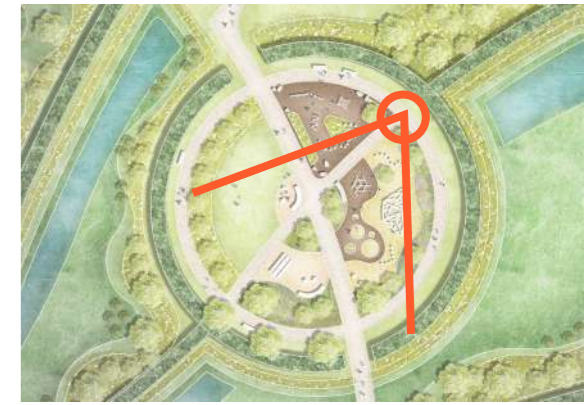


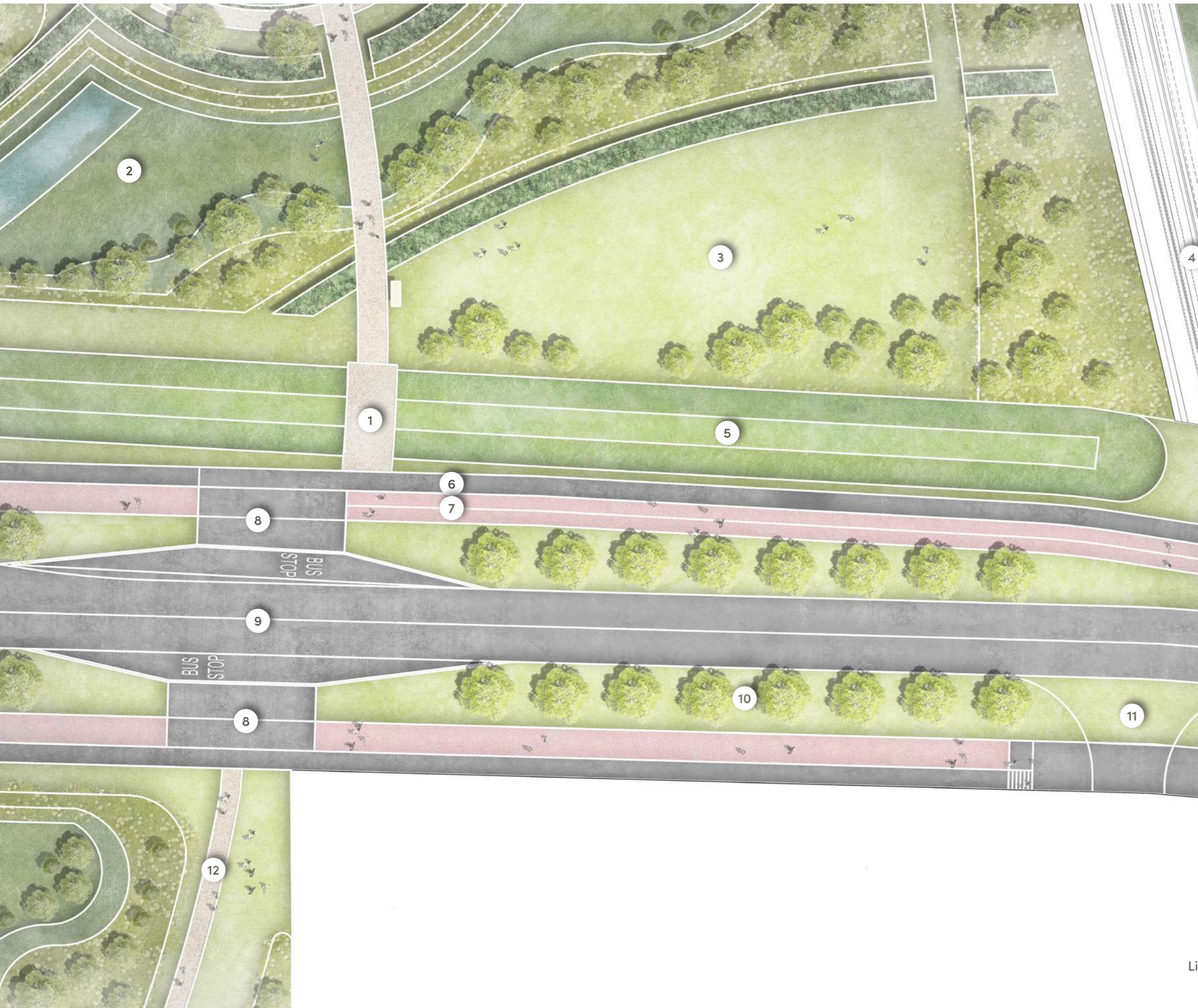
○ 6.3 PLAY PARK VISUAL



○ 6.4 SECTIONS



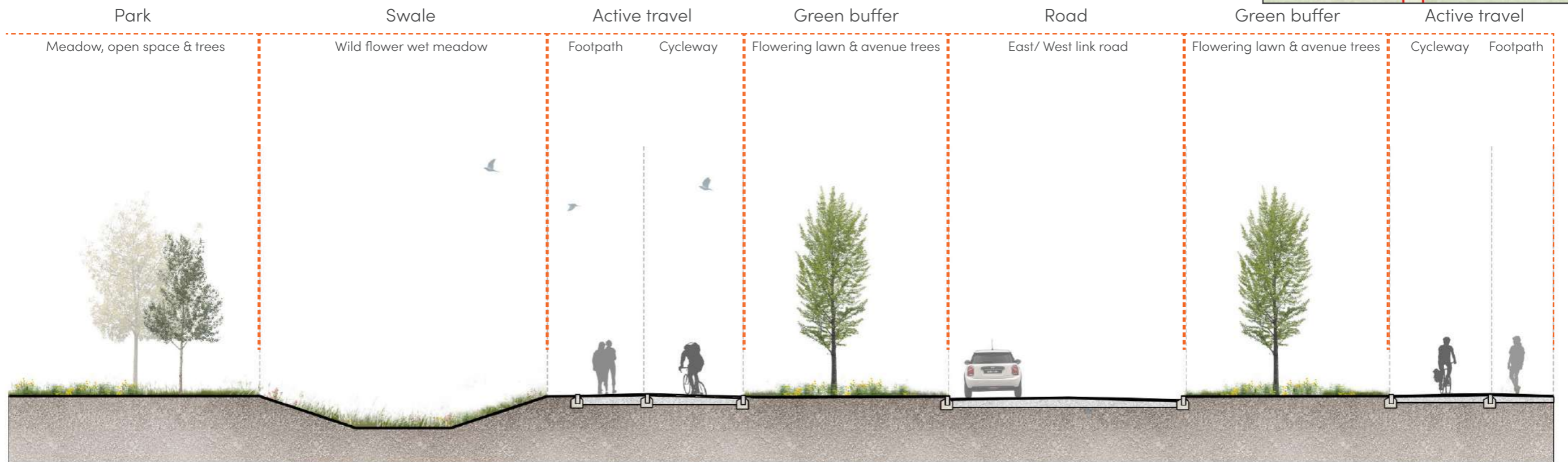
6.5 ROADS, CYCLEWAYS AND FOOTPATHS DETAIL PLAN



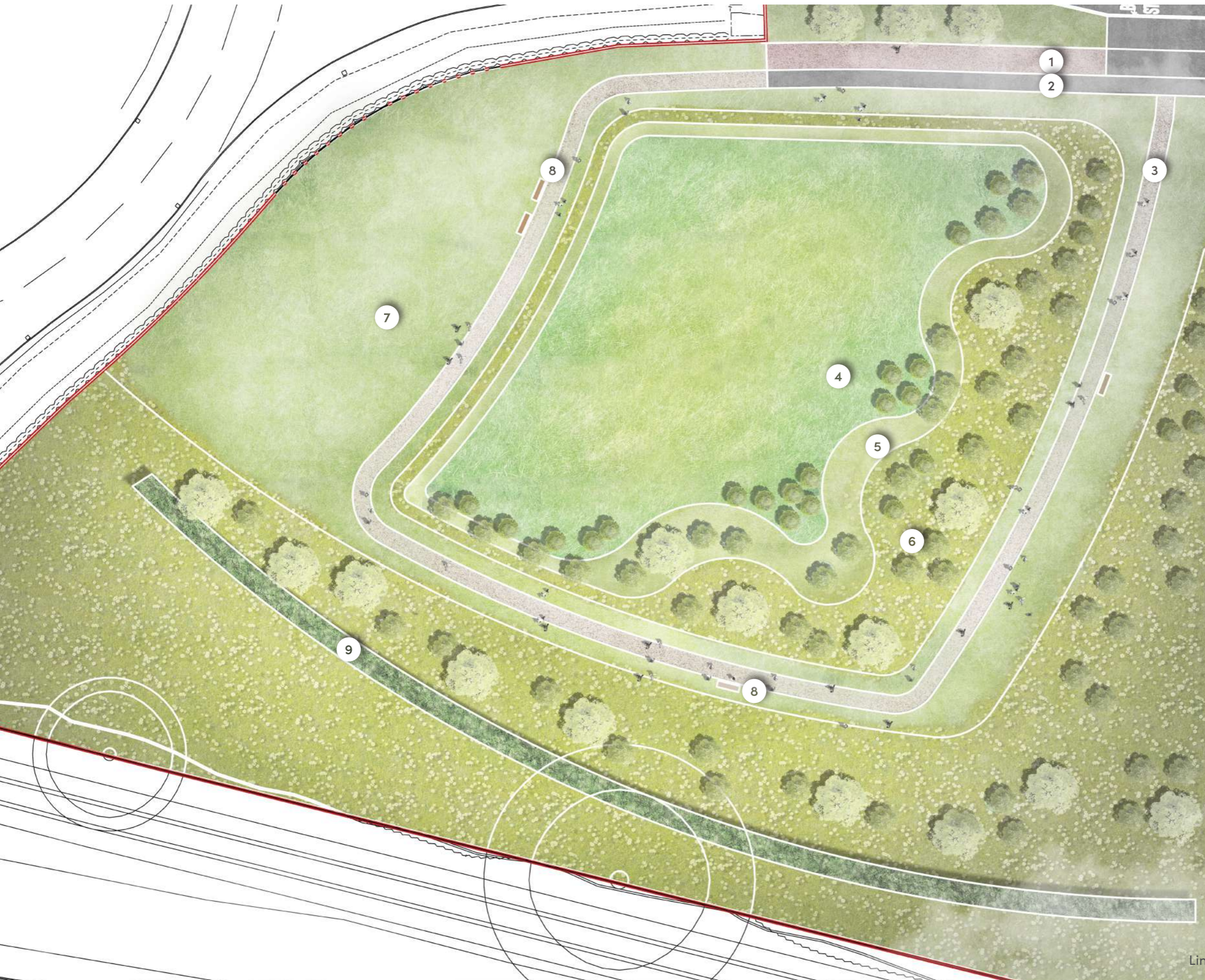
KEY

1. Footpath bridge over swale to park
2. SuDs basin
3. Open green space
4. Existing ditch
5. Swale along road
6. Footpath
7. Cycleway
8. Bus stop
9. East/West Link road
10. Avenue tree planting and flowering lawn
11. Future access
12. Informal footpath in park

○ 6.6 SECTION



6.7 PARK (SOUTH)

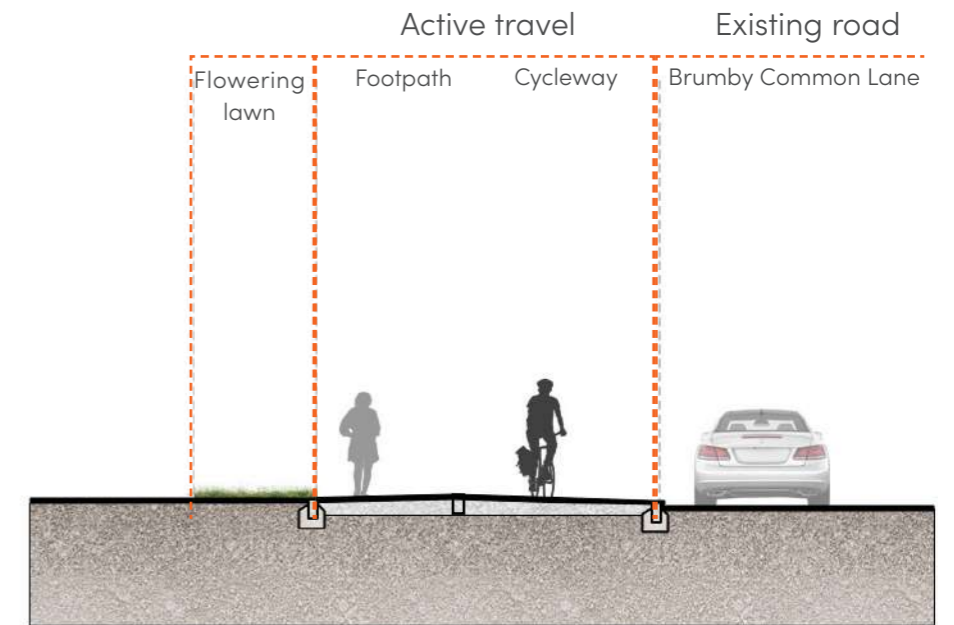


KEY

- 1. Cycleway
- 2. Footpath
- 3. Informal loose bound gravel path
- 4. SuDs basin base with wet meadow
- 5. SuDs basin Tussock meadow mid level
- 6. SuDs basin wild flower meadow upper level
- 7. Open space - mown flowering lawn
- 8. Bench seating
- 9. Mixed species native hedgerow

6.8 BRUMBY COMMON LANE

The proposals for Brumby Common Lane are to introduce a cycleway and pedestrian footpath along the North side of the existing road with lighting for safety and visibility. There will be native flowering lawn as a buffer between the footpath and adjacent development plot. Varying mowing regimes will allow for a mown strip directly along the footpath edge for visibility with meadow species left to grow tall to outer edge providing key habitat for pollinators.



○ 7. OUTLINE SPECIFICATION HARD LANDSCAPE



Coloured tarmac to cycleways



Tarmac to footpaths along road



Resin bound gravel to footpath in park (North)



Loose bound gravel to footpath in park (South)



Play grade bark mulch surface (play space)



Safety Surface wet pour (play space)

○ 7.1 OUTLINE SPECIFICATION EQUIPMENT AND FEATURES



Timber and steel benches



Timber and steel picnic tables and benches



Play surface mounding



Grass mounding features



Trim trail equipment



Trim trail equipment



Climbing frames



Stepping logs

○ 7.2 OUTLINE SPECIFICATION

SOFT LANDSCAPE

Wild flower meadow types (Site wide)



EM10 Tussock wild flower meadow



EM8 Wet Meadow



EM5 Wild flower meadow



EL1 Flowering Lawn

Mixed species Hedgerows



Species include: *Acer campestre*, *Alnus glutinosa*, *Cornus sanguinea*, *Crtaegus laevigata*, *Crataegus monogyna*, *Frangula alnus*, *Sambucus nigra*, *Viburnum lantana*

Marginal planting to SuDs basins and water vole ditches



Carex acutiformis



Schoenoplectus lacustris



Mentha aquatica

Aquatic Planting to SuDs basins and water vole ditches



Ranunculus aquatilis



Alisma plantago aquatica



Myriophyllum spicatum

○ 7.3 OUTLINE SPECIFICATION

SOFT LANDSCAPE

Street Tree to Road Edge



Carpinus betulus 'Frans Fontaine'

Ornamental planting (Park play area)



Cornus sanguinea



Geranium pratense



Deschampsia cespitosa

Trees to full site (range of sizes whip - semi mature)



Acer campestre



Alnus glutinosa



Cretaeus monogyna



Malus sylvestris



Salix caprea



Sorbus aucuparia



Prunus padus



Tilia cordata



Betula pendula



Populus nigra



Newcastle

Door 19, Teapots 1 & 2,
Hoults Yard, Walker Road,
Newcastle Upon Tyne
NE6 2HL

T: +44(0) 191 281 3775
E: newcastle@oobe.co.uk

Glasgow

201 West George Street,
Glasgow
G2 2LW

T: +44(0) 141 301 1465
E: glasgow@oobe.co.uk

Edinburgh

91 George Street,
Edinburgh
EH2 3ES

T: +44 (0)191 281 3775
E: edinburgh@oobe.co.uk

oobe