



Photo 19 – View east along track that leads to northeast field parcel. Track loses definition and becomes grass track.



Photo 20 – View to north of Brumby Common Lane, highlighting road access for second area in southern section.



Photo 21 – View south into fields neighbouring first area in southern section.  
Maintained agricultural land.

**Appendix 3: Groundsure Report**

---

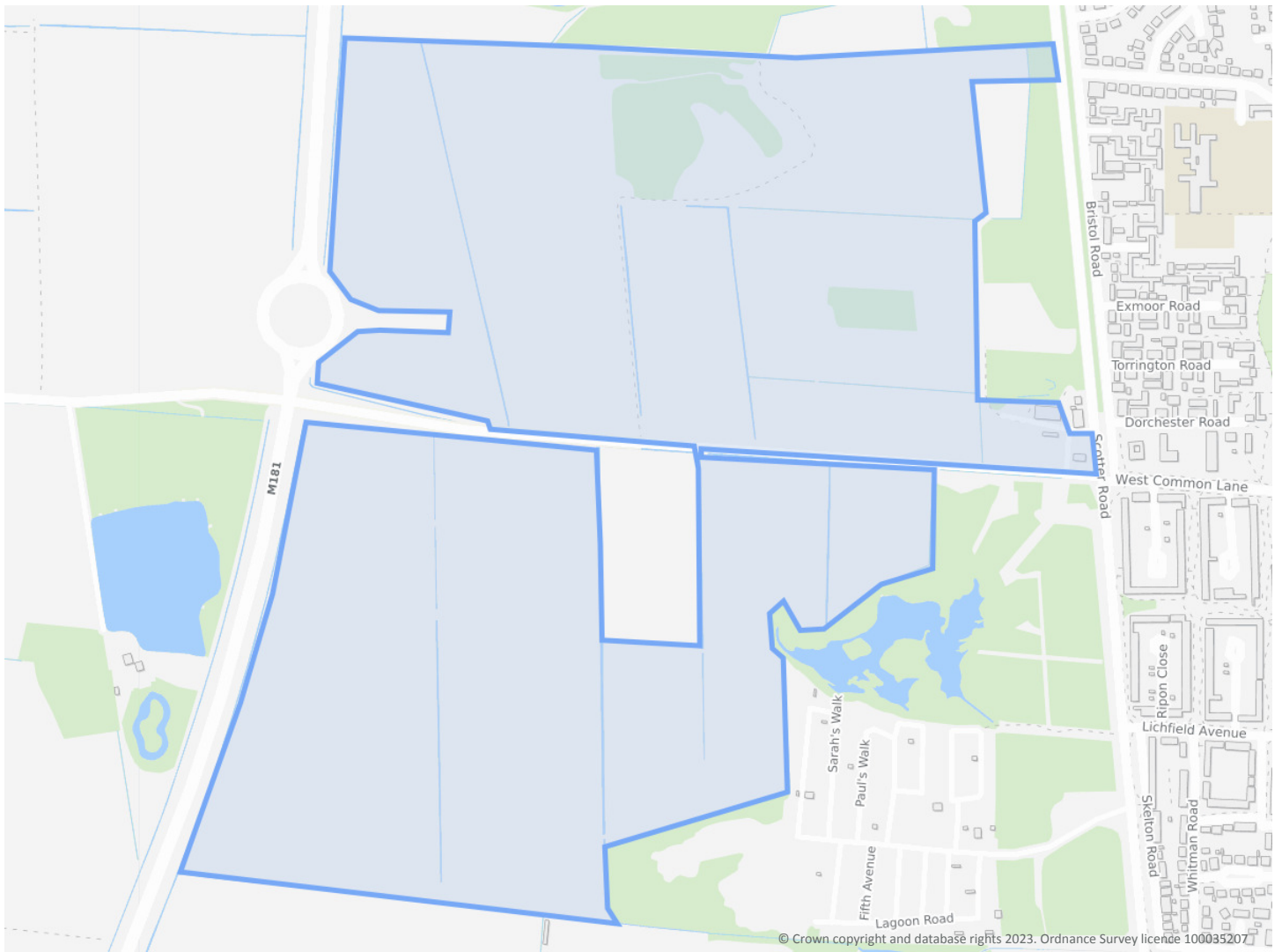
## Lincolnshire Lakes East, DN17 2AB

### Order Details

**Date:** 30/06/2023  
**Your ref:** PO\_5252  
**Our Ref:** HMD-214-IUA-Q4M-M9J-E4E

### Site Details

**Location:** 486593 409493  
**Area:** 98.7 ha  
**Authority:** [North Lincolnshire Council](#) ↗



**Summary of findings**

[p. 2 >](#)

**Aerial image**

[p. 9 >](#)

**OS MasterMap site plan**

N/A: >10ha

[groundsure.com/insightuserguide](https://groundsure.com/insightuserguide) ↗

Contact us with any questions at:

[info@groundsure.com](mailto:info@groundsure.com) ↗

01273 257 755

## Summary of findings

Page	Section	<a href="#">Past land use &gt;</a>	On site	0-50m	50-250m	250-500m	500-2000m
<a href="#">14 &gt;</a>	<a href="#">1.1 &gt;</a>	<a href="#">Historical industrial land uses &gt;</a>	3	7	7	4	-
15	1.2	Historical tanks	0	0	0	0	-
<a href="#">16 &gt;</a>	<a href="#">1.3 &gt;</a>	<a href="#">Historical energy features &gt;</a>	0	0	5	3	-
16	1.4	Historical petrol stations	0	0	0	0	-
17	1.5	Historical garages	0	0	0	0	-
17	1.6	Historical military land	0	0	0	0	-
Page	Section	<a href="#">Past land use - un-grouped &gt;</a>	On site	0-50m	50-250m	250-500m	500-2000m
<a href="#">18 &gt;</a>	<a href="#">2.1 &gt;</a>	<a href="#">Historical industrial land uses &gt;</a>	3	10	10	7	-
20	2.2	Historical tanks	0	0	0	0	-
<a href="#">20 &gt;</a>	<a href="#">2.3 &gt;</a>	<a href="#">Historical energy features &gt;</a>	0	0	10	6	-
21	2.4	Historical petrol stations	0	0	0	0	-
21	2.5	Historical garages	0	0	0	0	-
Page	Section	<a href="#">Waste and landfill &gt;</a>	On site	0-50m	50-250m	250-500m	500-2000m
22	3.1	Active or recent landfill	0	0	0	0	-
22	3.2	Historical landfill (BGS records)	0	0	0	0	-
<a href="#">23 &gt;</a>	<a href="#">3.3 &gt;</a>	<a href="#">Historical landfill (LA/mapping records) &gt;</a>	0	0	1	0	-
<a href="#">23 &gt;</a>	<a href="#">3.4 &gt;</a>	<a href="#">Historical landfill (EA/NRW records) &gt;</a>	1	0	0	0	-
23	3.5	Historical waste sites	0	0	0	0	-
24	3.6	Licensed waste sites	0	0	0	0	-
<a href="#">24 &gt;</a>	<a href="#">3.7 &gt;</a>	<a href="#">Waste exemptions &gt;</a>	12	0	5	3	-
Page	Section	<a href="#">Current industrial land use &gt;</a>	On site	0-50m	50-250m	250-500m	500-2000m
<a href="#">26 &gt;</a>	<a href="#">4.1 &gt;</a>	<a href="#">Recent industrial land uses &gt;</a>	1	0	7	-	-
27	4.2	Current or recent petrol stations	0	0	0	0	-
27	4.3	Electricity cables	0	0	0	0	-
27	4.4	Gas pipelines	0	0	0	0	-
28	4.5	Sites determined as Contaminated Land	0	0	0	0	-



28	4.6	Control of Major Accident Hazards (COMAH)	0	0	0	0	-
28	4.7	Regulated explosive sites	0	0	0	0	-
28	4.8	Hazardous substance storage/usage	0	0	0	0	-
28	4.9	Historical licensed industrial activities (IPC)	0	0	0	0	-
29	4.10	Licensed industrial activities (Part A(1))	0	0	0	0	-
29	4.11	Licensed pollutant release (Part A(2)/B)	0	0	0	0	-
29	4.12	Radioactive Substance Authorisations	0	0	0	0	-
<b>29 &gt;</b>	<b>4.13 &gt;</b>	<b><u>Licensed Discharges to controlled waters &gt;</u></b>	<b>1</b>	<b>0</b>	<b>2</b>	<b>5</b>	<b>-</b>
31	4.14	Pollutant release to surface waters (Red List)	0	0	0	0	-
31	4.15	Pollutant release to public sewer	0	0	0	0	-
31	4.16	List 1 Dangerous Substances	0	0	0	0	-
31	4.17	List 2 Dangerous Substances	0	0	0	0	-
<b>31 &gt;</b>	<b>4.18 &gt;</b>	<b><u>Pollution Incidents (EA/NRW) &gt;</u></b>	<b>0</b>	<b>0</b>	<b>0</b>	<b>7</b>	<b>-</b>
32	4.19	Pollution inventory substances	0	0	0	0	-
33	4.20	Pollution inventory waste transfers	0	0	0	0	-
33	4.21	Pollution inventory radioactive waste	0	0	0	0	-
Page	Section	<b><u>Hydrogeology &gt;</u></b>	On site	0-50m	50-250m	250-500m	500-2000m
<b>34 &gt;</b>	<b>5.1 &gt;</b>	<b><u>Superficial aquifer &gt;</u></b>	Identified (within 500m)				
<b>36 &gt;</b>	<b>5.2 &gt;</b>	<b><u>Bedrock aquifer &gt;</u></b>	Identified (within 500m)				
<b>38 &gt;</b>	<b>5.3 &gt;</b>	<b><u>Groundwater vulnerability &gt;</u></b>	Identified (within 50m)				
40	5.4	Groundwater vulnerability- soluble rock risk	None (within 0m)				
40	5.5	Groundwater vulnerability- local information	None (within 0m)				
<b>41 &gt;</b>	<b>5.6 &gt;</b>	<b><u>Groundwater abstractions &gt;</u></b>	0	0	3	0	1
<b>43 &gt;</b>	<b>5.7 &gt;</b>	<b><u>Surface water abstractions &gt;</u></b>	4	2	3	0	24
50	5.8	Potable abstractions	0	0	0	0	0
50	5.9	Source Protection Zones	0	0	0	0	-
50	5.10	Source Protection Zones (confined aquifer)	0	0	0	0	-
Page	Section	<b><u>Hydrology &gt;</u></b>	On site	0-50m	50-250m	250-500m	500-2000m
<b>51 &gt;</b>	<b>6.1 &gt;</b>	<b><u>Water Network (OS MasterMap) &gt;</u></b>	41	24	12	-	-



<a href="#">58</a> >	<a href="#">6.2</a> >	<a href="#">Surface water features</a> >	1	9	14	-	-
<a href="#">58</a> >	<a href="#">6.3</a> >	<a href="#">WFD Surface water body catchments</a> >	1	-	-	-	-
<a href="#">58</a> >	<a href="#">6.4</a> >	<a href="#">WFD Surface water bodies</a> >	0	0	0	-	-
<a href="#">59</a> >	<a href="#">6.5</a> >	<a href="#">WFD Groundwater bodies</a> >	1	-	-	-	-
Page	Section	<a href="#">River and coastal flooding</a> >	On site	0-50m	50-250m	250-500m	500-2000m
<a href="#">60</a> >	<a href="#">7.1</a> >	<a href="#">Risk of flooding from rivers and the sea</a> >	Medium (within 50m)				
<a href="#">61</a> >	<a href="#">7.2</a> >	<a href="#">Historical Flood Events</a> >	3	0	0	-	-
61	7.3	Flood Defences	0	0	0	-	-
62	7.4	Areas Benefiting from Flood Defences	0	0	0	-	-
62	7.5	Flood Storage Areas	0	0	0	-	-
<a href="#">63</a> >	<a href="#">7.6</a> >	<a href="#">Flood Zone 2</a> >	Identified (within 50m)				
<a href="#">64</a> >	<a href="#">7.7</a> >	<a href="#">Flood Zone 3</a> >	Identified (within 50m)				
Page	Section	<a href="#">Surface water flooding</a> >					
<a href="#">65</a> >	<a href="#">8.1</a> >	<a href="#">Surface water flooding</a> >	1 in 30 year, Greater than 1.0m (within 50m)				
Page	Section	<a href="#">Groundwater flooding</a> >					
<a href="#">67</a> >	<a href="#">9.1</a> >	<a href="#">Groundwater flooding</a> >	High (within 50m)				
Page	Section	<a href="#">Environmental designations</a> >	On site	0-50m	50-250m	250-500m	500-2000m
68	10.1	Sites of Special Scientific Interest (SSSI)	0	0	0	0	0
69	10.2	Conserved wetland sites (Ramsar sites)	0	0	0	0	0
69	10.3	Special Areas of Conservation (SAC)	0	0	0	0	0
69	10.4	Special Protection Areas (SPA)	0	0	0	0	0
69	10.5	National Nature Reserves (NNR)	0	0	0	0	0
<a href="#">70</a> >	<a href="#">10.6</a> >	<a href="#">Local Nature Reserves (LNR)</a> >	0	0	0	0	5
<a href="#">70</a> >	<a href="#">10.7</a> >	<a href="#">Designated Ancient Woodland</a> >	0	0	0	0	4
71	10.8	Biosphere Reserves	0	0	0	0	0
71	10.9	Forest Parks	0	0	0	0	0
71	10.10	Marine Conservation Zones	0	0	0	0	0
71	10.11	Green Belt	0	0	0	0	0
71	10.12	Proposed Ramsar sites	0	0	0	0	0



72	10.13	Possible Special Areas of Conservation (pSAC)	0	0	0	0	0
72	10.14	Potential Special Protection Areas (pSPA)	0	0	0	0	0
72	10.15	Nitrate Sensitive Areas	0	0	0	0	0
<b>72 &gt;</b>	<b>10.16 &gt;</b>	<b><a href="#">Nitrate Vulnerable Zones &gt;</a></b>	2	0	0	0	1
<b>74 &gt;</b>	<b>10.17 &gt;</b>	<b><a href="#">SSSI Impact Risk Zones &gt;</a></b>	2	-	-	-	-
76	10.18	SSSI Units	0	0	0	0	0
Page	Section	Visual and cultural designations	On site	0-50m	50-250m	250-500m	500-2000m
77	11.1	World Heritage Sites	0	0	0	-	-
77	11.2	Area of Outstanding Natural Beauty	0	0	0	-	-
77	11.3	National Parks	0	0	0	-	-
77	11.4	Listed Buildings	0	0	0	-	-
78	11.5	Conservation Areas	0	0	0	-	-
78	11.6	Scheduled Ancient Monuments	0	0	0	-	-
78	11.7	Registered Parks and Gardens	0	0	0	-	-
Page	Section	<a href="#">Agricultural designations &gt;</a>	On site	0-50m	50-250m	250-500m	500-2000m
<b>79 &gt;</b>	<b>12.1 &gt;</b>	<b><a href="#">Agricultural Land Classification &gt;</a></b>	Urban (within 250m)				
80	12.2	Open Access Land	0	0	0	-	-
<b>80 &gt;</b>	<b>12.3 &gt;</b>	<b><a href="#">Tree Felling Licences &gt;</a></b>	10	7	3	-	-
81	12.4	Environmental Stewardship Schemes	0	0	0	-	-
81	12.5	Countryside Stewardship Schemes	0	0	0	-	-
Page	Section	<a href="#">Habitat designations &gt;</a>	On site	0-50m	50-250m	250-500m	500-2000m
<b>82 &gt;</b>	<b>13.1 &gt;</b>	<b><a href="#">Priority Habitat Inventory &gt;</a></b>	7	7	7	-	-
83	13.2	Habitat Networks	0	0	0	-	-
<b>84 &gt;</b>	<b>13.3 &gt;</b>	<b><a href="#">Open Mosaic Habitat &gt;</a></b>	0	1	0	-	-
84	13.4	Limestone Pavement Orders	0	0	0	-	-
Page	Section	<a href="#">Geology 1:10,000 scale &gt;</a>	On site	0-50m	50-250m	250-500m	500-2000m
<b>85 &gt;</b>	<b>14.1 &gt;</b>	<b><a href="#">10k Availability &gt;</a></b>	Identified (within 500m)				
86	14.2	Artificial and made ground (10k)	0	0	0	0	-
<b>87 &gt;</b>	<b>14.3 &gt;</b>	<b><a href="#">Superficial geology (10k) &gt;</a></b>	10	1	2	0	-



88	14.4	Landslip (10k)	0	0	0	0	-
<a href="#">89</a> >	<a href="#">14.5</a> >	<a href="#">Bedrock geology (10k)</a> >	4	0	0	6	-
<a href="#">90</a> >	<a href="#">14.6</a> >	<a href="#">Bedrock faults and other linear features (10k)</a> >	1	1	4	0	-
Page	Section	<a href="#">Geology 1:50,000 scale</a> >	On site	0-50m	50-250m	250-500m	500-2000m
<a href="#">91</a> >	<a href="#">15.1</a> >	<a href="#">50k Availability</a> >	Identified (within 500m)				
92	15.2	Artificial and made ground (50k)	0	0	0	0	-
92	15.3	Artificial ground permeability (50k)	0	0	-	-	-
<a href="#">93</a> >	<a href="#">15.4</a> >	<a href="#">Superficial geology (50k)</a> >	5	1	2	0	-
<a href="#">94</a> >	<a href="#">15.5</a> >	<a href="#">Superficial permeability (50k)</a> >	Identified (within 50m)				
94	15.6	Landslip (50k)	0	0	0	0	-
95	15.7	Landslip permeability (50k)	None (within 50m)				
<a href="#">96</a> >	<a href="#">15.8</a> >	<a href="#">Bedrock geology (50k)</a> >	2	0	0	3	-
<a href="#">97</a> >	<a href="#">15.9</a> >	<a href="#">Bedrock permeability (50k)</a> >	Identified (within 50m)				
<a href="#">97</a> >	<a href="#">15.10</a> >	<a href="#">Bedrock faults and other linear features (50k)</a> >	0	1	5	0	-
Page	Section	<a href="#">Boreholes</a> >	On site	0-50m	50-250m	250-500m	500-2000m
<a href="#">99</a> >	<a href="#">16.1</a> >	<a href="#">BGS Boreholes</a> >	4	2	10	-	-
Page	Section	<a href="#">Natural ground subsidence</a> >					
<a href="#">101</a> >	<a href="#">17.1</a> >	<a href="#">Shrink swell clays</a> >	Low (within 50m)				
<a href="#">103</a> >	<a href="#">17.2</a> >	<a href="#">Running sands</a> >	Low (within 50m)				
<a href="#">105</a> >	<a href="#">17.3</a> >	<a href="#">Compressible deposits</a> >	Moderate (within 50m)				
<a href="#">107</a> >	<a href="#">17.4</a> >	<a href="#">Collapsible deposits</a> >	Negligible (within 50m)				
<a href="#">108</a> >	<a href="#">17.5</a> >	<a href="#">Landslides</a> >	Very low (within 50m)				
<a href="#">109</a> >	<a href="#">17.6</a> >	<a href="#">Ground dissolution of soluble rocks</a> >	Negligible (within 50m)				
Page	Section	<a href="#">Mining and ground workings</a> >	On site	0-50m	50-250m	250-500m	500-2000m
<a href="#">111</a> >	<a href="#">18.1</a> >	<a href="#">BritPits</a> >	1	0	1	1	-
<a href="#">112</a> >	<a href="#">18.2</a> >	<a href="#">Surface ground workings</a> >	6	15	12	-	-
114	18.3	Underground workings	0	0	0	0	0
114	18.4	Underground mining extents	0	0	0	0	-
<a href="#">114</a> >	<a href="#">18.5</a> >	<a href="#">Historical Mineral Planning Areas</a> >	0	1	1	0	-



114	18.6	Non-coal mining	0	0	0	0	0
<a href="#">115</a> >	<a href="#">18.7</a> >	<a href="#">JPB mining areas</a> >	Identified (within 0m)				
115	18.8	The Coal Authority non-coal mining	0	0	0	0	-
115	18.9	Researched mining	0	0	0	0	-
116	18.10	Mining record office plans	0	0	0	0	-
116	18.11	BGS mine plans	0	0	0	0	-
116	18.12	Coal mining	None (within 0m)				
116	18.13	Brine areas	None (within 0m)				
116	18.14	Gypsum areas	None (within 0m)				
117	18.15	Tin mining	None (within 0m)				
117	18.16	Clay mining	None (within 0m)				
Page	Section	Ground cavities and sinkholes	On site	0-50m	50-250m	250-500m	500-2000m
118	19.1	Natural cavities	0	0	0	0	-
118	19.2	Mining cavities	0	0	0	0	0
118	19.3	Reported recent incidents	0	0	0	0	-
118	19.4	Historical incidents	0	0	0	0	-
119	19.5	National karst database	0	0	0	0	-
Page	Section	<a href="#">Radon</a> >					
<a href="#">120</a> >	<a href="#">20.1</a> >	<a href="#">Radon</a> >	Less than 1% (within 0m)				
Page	Section	<a href="#">Soil chemistry</a> >	On site	0-50m	50-250m	250-500m	500-2000m
<a href="#">122</a> >	<a href="#">21.1</a> >	<a href="#">BGS Estimated Background Soil Chemistry</a> >	41	7	-	-	-
<a href="#">125</a> >	<a href="#">21.2</a> >	<a href="#">BGS Estimated Urban Soil Chemistry</a> >	94	25	-	-	-
132	21.3	BGS Measured Urban Soil Chemistry	0	0	-	-	-
Page	Section	Railway infrastructure and projects	On site	0-50m	50-250m	250-500m	500-2000m
133	22.1	Underground railways (London)	0	0	0	-	-
133	22.2	Underground railways (Non-London)	0	0	0	-	-
133	22.3	Railway tunnels	0	0	0	-	-
133	22.4	Historical railway and tunnel features	0	0	0	-	-
133	22.5	Royal Mail tunnels	0	0	0	-	-



134	22.6	Historical railways	0	0	0	-	-
134	22.7	Railways	0	0	0	-	-
134	22.8	Crossrail 1	0	0	0	0	-
134	22.9	Crossrail 2	0	0	0	0	-
134	22.10	HS2	0	0	0	0	-

## Recent aerial photograph



Capture Date: 04/04/2021

Site Area: 98.7ha



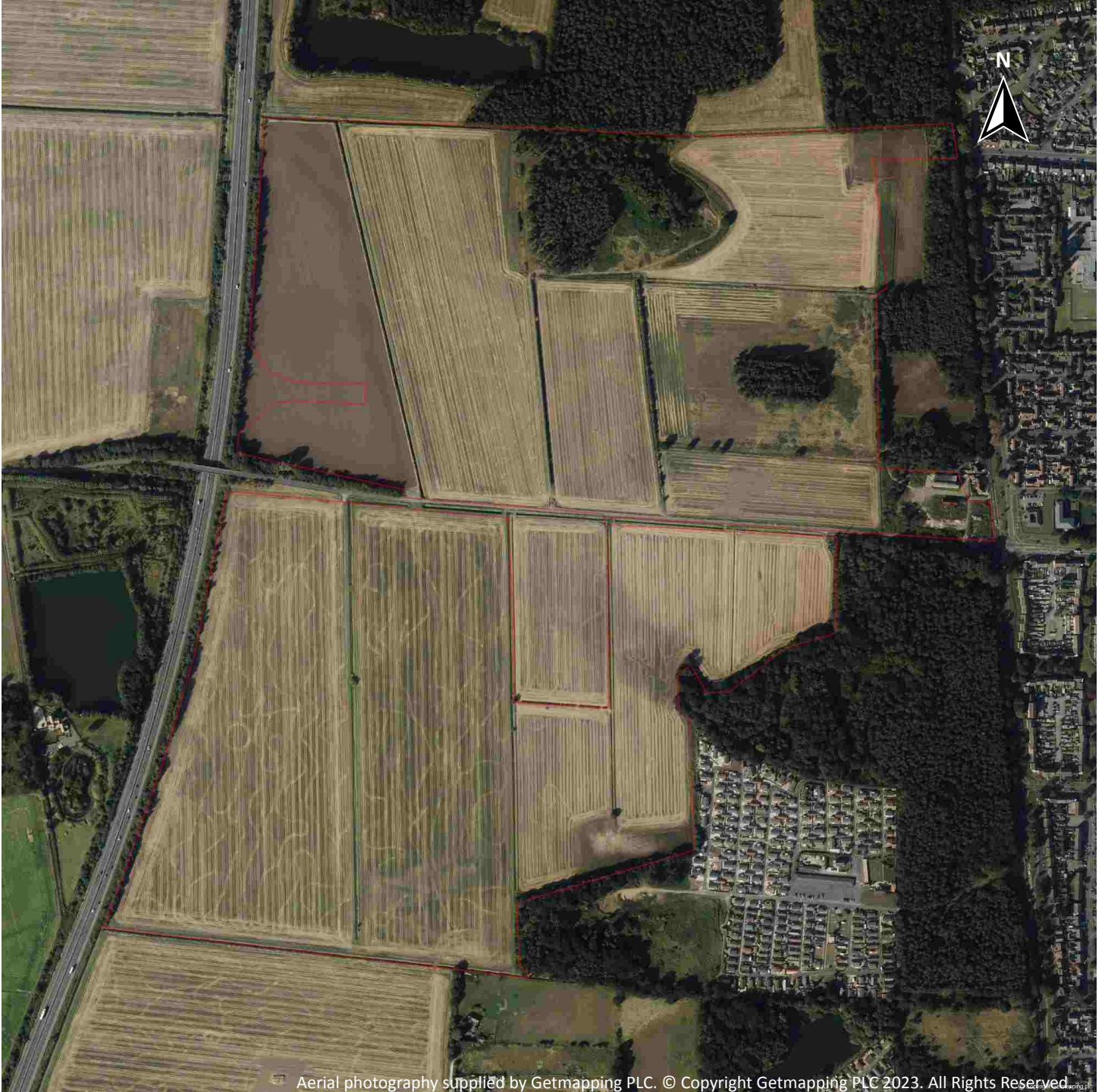
Contact us with any questions at:

[info@groundsure.com](mailto:info@groundsure.com)

01273 257 755

Date: 30 June 2023

## Recent site history - 2019 aerial photograph



Capture Date: 20/10/2019

Site Area: 98.7ha



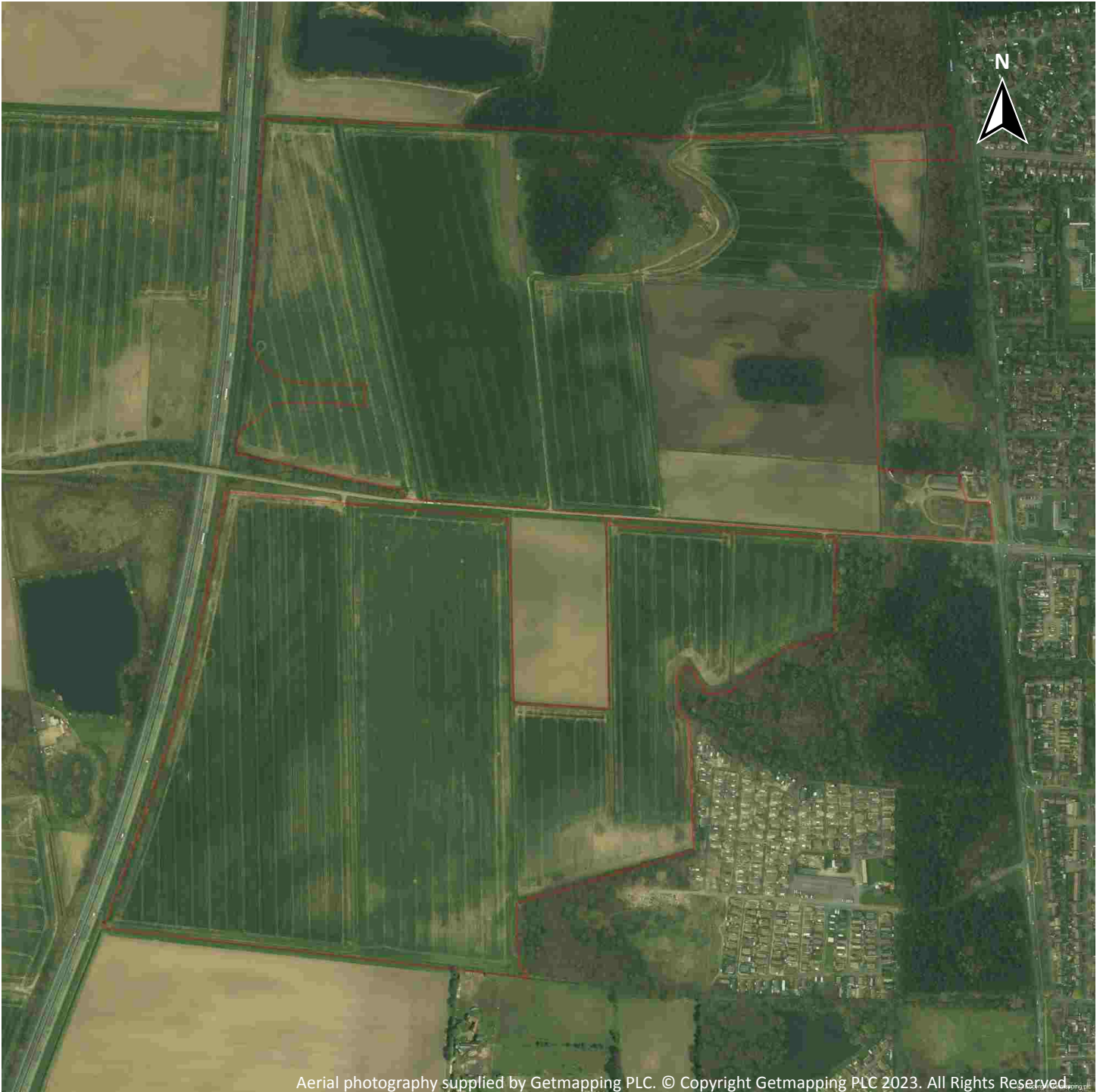
Contact us with any questions at:

[info@groundsure.com](mailto:info@groundsure.com)

01273 257 755

Date: 30 June 2023

## Recent site history - 2016 aerial photograph



Aerial photography supplied by Getmapping PLC. © Copyright Getmapping PLC 2023. All Rights Reserved

Capture Date: 21/04/2016

Site Area: 98.7ha



Contact us with any questions at:

[info@groundsure.com](mailto:info@groundsure.com)

01273 257 755

Date: 30 June 2023

## Recent site history - 2013 aerial photograph



Capture Date: 07/06/2013

Site Area: 98.7ha



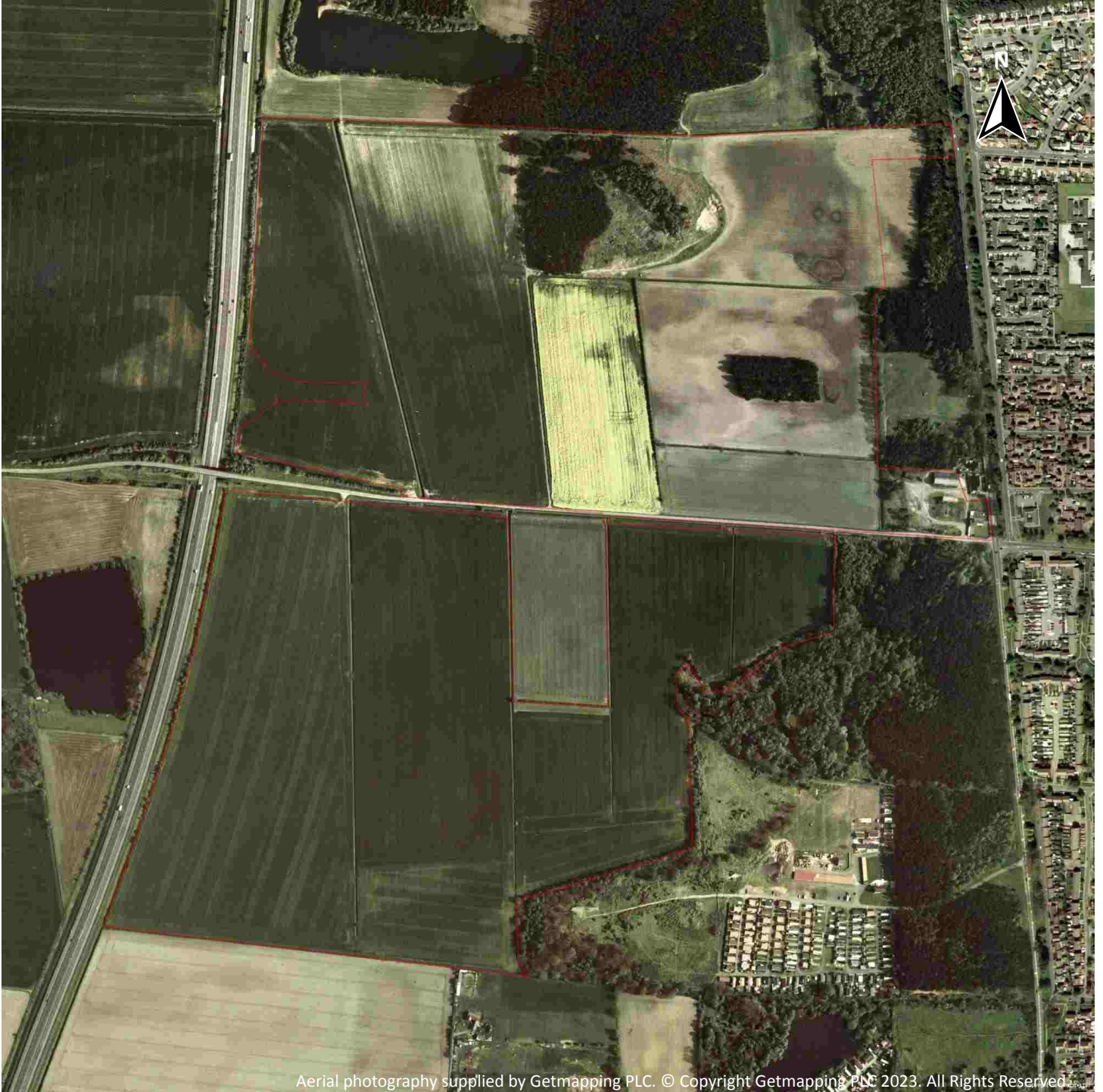
Contact us with any questions at:

[info@groundsure.com](mailto:info@groundsure.com)

01273 257 755

Date: 30 June 2023

## Recent site history - 1999 aerial photograph



Aerial photography supplied by Getmapping PLC. © Copyright Getmapping PLC 2023. All Rights Reserved.

Capture Date: 28/04/1999

Site Area: 98.7ha



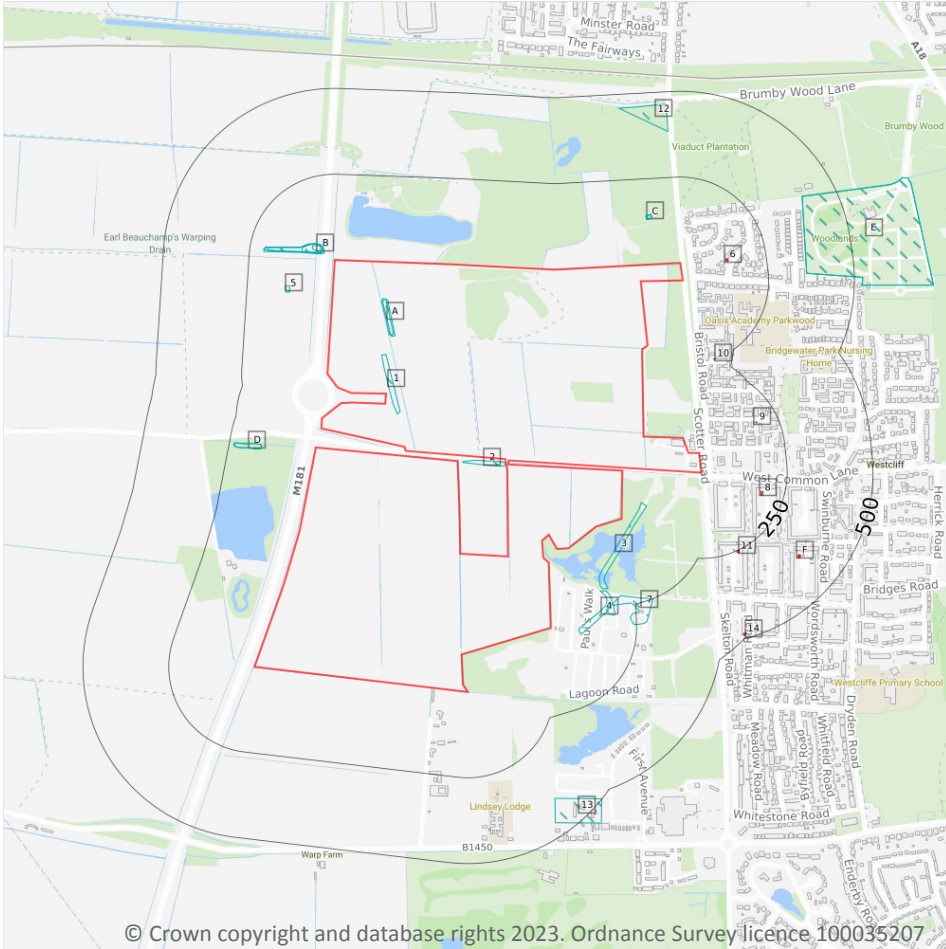
Contact us with any questions at:

[info@groundsure.com](mailto:info@groundsure.com)

01273 257 755


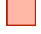
Date: 30 June 2023

# 1 Past land use



**— Site Outline**

**Search buffers in metres (m)**

-  Historical industrial land uses
-  Historical energy features

## 1.1 Historical industrial land uses

**Records within 500m** **21**

Potentially contaminative land use features digitised from historical Ordnance Survey mapping at 1:10,000 and 1:10,560 scale, intelligently grouped into contiguous features. To prevent misrepresentation of the size of historical features at any given time, features are only grouped if they have similar geometries within immediately preceding or succeeding map editions. See section 2 for a breakdown of grouping if required. Grouped and the original un-grouped features can be cross-referenced across sections 1 and 2 using the 'Group ID'.

Features are displayed on the Past land use map on [page 14 >](#)

ID	Location	Land use	Dates present	Group ID
1	On site	Unspecified Heap	1955	1417786



ID	Location	Land use	Dates present	Group ID
A	On site	Unspecified Heap	1885	1514810
A	On site	Unspecified Heap	1955	1537758
2	3m E	Unspecified Heap	1955	1417787
3	29m E	Unspecified Heap	1906 - 1938	1552590
B	37m NW	Unspecified Heap	1969	1526055
B	42m NW	Unspecified Heap	1906 - 1938	1498032
B	43m NW	Unspecified Heap	1885	1555846
B	47m NW	Unspecified Heap	1948	1504002
B	49m NW	Unspecified Heap	1956	1468745
4	83m SE	Unspecified Heap	1905 - 1938	1492090
5	126m NW	Unspecified Heap	1955	1417748
C	131m NE	Infectious Diseases Hospital	1906	1471647
C	132m NE	Infectious Diseases Hospital	1948	1551548
D	155m W	Unspecified Heap	1948	1522651
D	156m W	Unspecified Heap	1885	1510944
7	163m SE	Refuse Heap	1968 - 1975	1487204
E	362m NE	Crematorium	1980 - 1990	1526149
E	362m NE	Crematorium	1969	1544193
12	384m NE	Unspecified Pit	1956	1455481
13	401m S	Unspecified Depot	1968 - 1981	1460946

*This data is sourced from Ordnance Survey / Groundsure.*

## 1.2 Historical tanks

**Records within 500m**

**0**

Tank features digitised from historical Ordnance Survey mapping at high-detail 1:1,250 and 1:2,500 scale, intelligently grouped into contiguous features. To prevent misrepresentation of the size of historical features at any given time, features are only grouped if they have similar geometries within immediately preceding or succeeding map editions. See section 2 for a breakdown of grouping if required. Grouped and the original ungrouped features can be cross-referenced across sections 1 and 2 using the 'Group ID'.

*This data is sourced from Ordnance Survey / Groundsure.*



### 1.3 Historical energy features

**Records within 500m****8**

Energy features digitised from historical Ordnance Survey mapping at high-detail 1:1,250 and 1:2,500 scale, intelligently grouped into contiguous features. To prevent misrepresentation of the size of historical features at any given time, features are only grouped if they have similar geometries within immediately preceding or succeeding map editions. See section 2 for a breakdown of grouping if required. Grouped and the original ungrouped features can be cross-referenced across sections 1 and 2 using the 'Group ID'.

Features are displayed on the Past land use map on [page 14 >](#)

ID	Location	Land use	Dates present	Group ID
6	131m NE	Electricity Substation	1976 - 1994	140968
8	182m E	Electricity Substation	1990 - 1999	144582
9	187m E	Electricity Substation	1982	131364
10	197m E	Electricity Substation	1982	131362
11	250m E	Electricity Substation	1990 - 1999	146419
F	371m E	Electricity Transformer	1976	132061
F	371m E	Electricity Substation	1983 - 1994	137440
14	484m SE	Electricity Transformer	1974 - 1990	146584

*This data is sourced from Ordnance Survey / Groundsure.*

### 1.4 Historical petrol stations

**Records within 500m****0**

Petrol stations digitised from historical Ordnance Survey mapping at high-detail 1:1,250 and 1:2,500 scale, intelligently grouped into contiguous features. To prevent misrepresentation of the size of historical features at any given time, features are only grouped if they have similar geometries within immediately preceding or succeeding map editions. See section 2 for a breakdown of grouping if required. Grouped and the original ungrouped features can be cross-referenced across sections 1 and 2 using the 'Group ID'.

*This data is sourced from Ordnance Survey / Groundsure.*



## 1.5 Historical garages

Records within 500m

0

Garages digitised from historical Ordnance Survey mapping at high-detail 1:1,250 and 1:2,500 scale, intelligently grouped into contiguous features. To prevent misrepresentation of the size of historical features at any given time, features are only grouped if they have similar geometries within immediately preceding or succeeding map editions. See section 2 for a breakdown of grouping if required. Grouped and the original ungrouped features can be cross-referenced across sections 1 and 2 using the 'Group ID'.

*This data is sourced from Ordnance Survey / Groundsure.*

## 1.6 Historical military land

Records within 500m

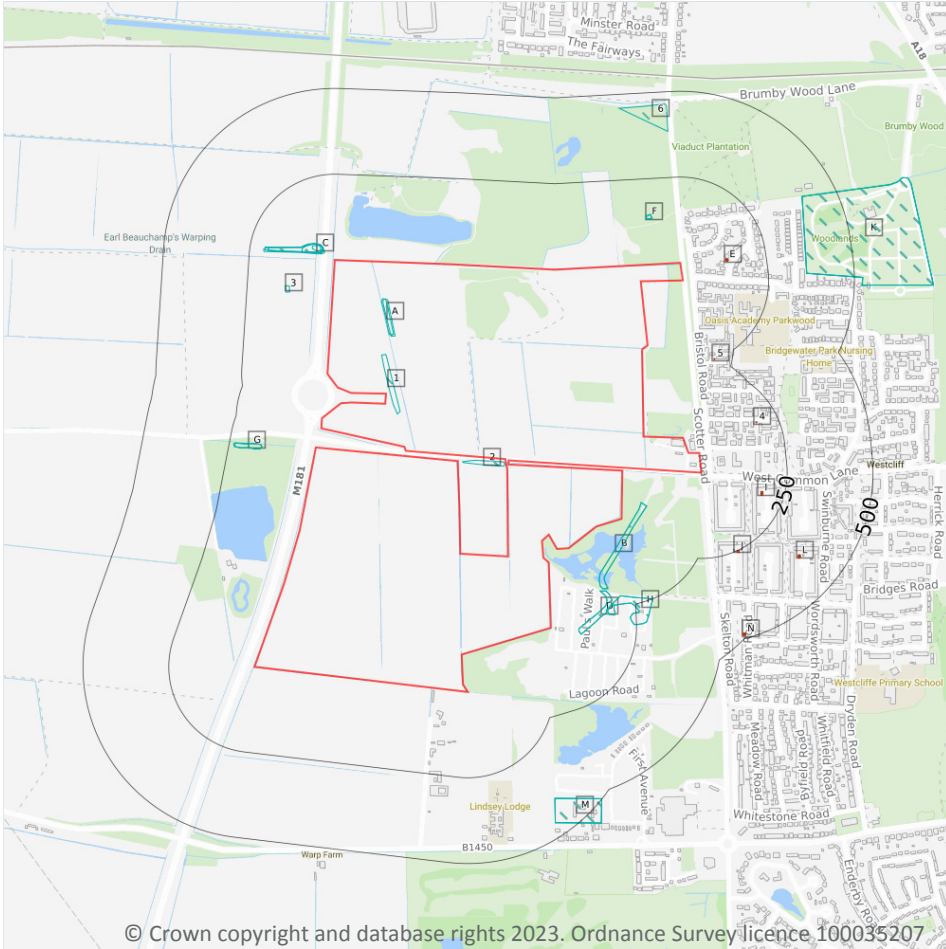
0

Areas of military land digitised from multiple sources including the National Archives, local records, MOD records and verified other sources, intelligently grouped into contiguous features.

*This data is sourced from Ordnance Survey / Groundsure / other sources.*



## 2 Past land use - un-grouped



**Site Outline**

**Search buffers in metres (m)**

- Historical industrial land uses
- Historical energy features

© Crown copyright and database rights 2023. Ordnance Survey licence 100035207

### 2.1 Historical industrial land uses

**Records within 500m** **30**

Potentially contaminative land use features digitised from historical Ordnance Survey mapping at 1:10,000 and 10,560 scale. Any records shown are available intelligently grouped in section 1. Grouped and the original un-grouped features can be cross-referenced across sections 1 and 2 using the 'Group ID'.

Features are displayed on the Past land use - un-grouped map on [page 18 >](#)

ID	Location	Land Use	Date	Group ID
1	On site	Unspecified Heap	1955	1417786
A	On site	Unspecified Heap	1885	1514810
A	On site	Unspecified Heap	1955	1537758

ID	Location	Land Use	Date	Group ID
2	3m E	Unspecified Heap	1955	1417787
B	29m E	Unspecified Heap	1938	1552590
B	29m E	Unspecified Heap	1906	1552590
C	37m NW	Unspecified Heap	1969	1526055
C	42m NW	Unspecified Heap	1938	1498032
C	42m NW	Unspecified Heap	1906	1498032
C	43m NW	Unspecified Heap	1885	1555846
C	47m NW	Unspecified Heap	1948	1504002
C	47m NW	Unspecified Heap	1948	1504002
C	49m NW	Unspecified Heap	1956	1468745
D	83m SE	Unspecified Heap	1938	1492090
D	83m SE	Unspecified Heap	1905	1492090
3	126m NW	Unspecified Heap	1955	1417748
F	131m NE	Infectious Diseases Hospital	1906	1471647
F	132m NE	Infectious Diseases Hospital	1948	1551548
G	155m W	Unspecified Heap	1948	1522651
G	155m W	Unspecified Heap	1948	1522651
G	156m W	Unspecified Heap	1885	1510944
H	163m SE	Refuse Heap	1968	1487204
H	163m SE	Refuse Heap	1975	1487204
K	362m NE	Crematorium	1969	1544193
K	362m NE	Crematorium	1980	1526149
K	362m NE	Crematorium	1990	1526149
6	384m NE	Unspecified Pit	1956	1455481
M	401m S	Unspecified Depot	1968	1460946
M	401m S	Unspecified Depot	1975	1460946
M	401m S	Unspecified Depot	1981	1460946

*This data is sourced from Ordnance Survey / Groundsure.*



Contact us with any questions at:

[info@groundsure.com](mailto:info@groundsure.com) ↗

01273 257 755

Date: 30 June 2023

## 2.2 Historical tanks

Records within 500m

0

Tank features digitised from historical Ordnance Survey mapping at high-detail 1:1,250 and 1:2,500 scale. Any records shown are available intelligently grouped in section 1. Grouped and the original un-grouped features can be cross-referenced across sections 1 and 2 using the 'Group ID'.

*This data is sourced from Ordnance Survey / Groundsure.*

## 2.3 Historical energy features

Records within 500m

16

Energy features digitised from historical Ordnance Survey mapping at high-detail 1:1,250 and 1:2,500 scale. Any records shown are available intelligently grouped in section 1. Grouped and the original un-grouped features can be cross-referenced across sections 1 and 2 using the 'Group ID'.

Features are displayed on the Past land use - un-grouped map on [page 18 >](#)

ID	Location	Land Use	Date	Group ID
E	131m NE	Electricity Substation	1983	140968
E	131m NE	Electricity Substation	1983	140968
E	132m NE	Electricity Substation	1994	140968
E	132m NE	Electricity Substation	1976	140968
I	182m E	Electricity Substation	1990	144582
I	182m E	Electricity Substation	1999	144582
4	187m E	Electricity Substation	1982	131364
5	197m E	Electricity Substation	1982	131362
J	250m E	Electricity Substation	1990	146419
J	250m E	Electricity Substation	1999	146419
L	371m E	Electricity Transformer	1976	132061
L	371m E	Electricity Substation	1983	137440
L	373m E	Electricity Substation	1994	137440
N	484m SE	Electricity Transformer	1990	146584
N	484m SE	Electricity Transformer	1990	146584
N	484m SE	Electricity Transformer	1974	146584

*This data is sourced from Ordnance Survey / Groundsure.*



## 2.4 Historical petrol stations

Records within 500m

0

Petrol stations digitised from historical Ordnance Survey mapping at high-detail 1:1,250 and 1:2,500 scale. Any records shown are available intelligently grouped in section 1. Grouped and the original un-grouped features can be cross-referenced across sections 1 and 2 using the 'Group ID'.

*This data is sourced from Ordnance Survey / Groundsure.*

## 2.5 Historical garages

Records within 500m

0

Garages digitised from historical Ordnance Survey mapping at high-detail 1:1,250 and 1:2,500 scale. Any records shown are available intelligently grouped in section 1. Grouped and the original un-grouped features can be cross-referenced across sections 1 and 2 using the 'Group ID'.

*This data is sourced from Ordnance Survey / Groundsure.*



## 3 Waste and landfill



### 3.1 Active or recent landfill

Records within 500m

0

Active or recently closed landfill sites under Environment Agency/Natural Resources Wales regulation.

*This data is sourced from the Environment Agency and Natural Resources Wales.*

### 3.2 Historical landfill (BGS records)

Records within 500m

0

Landfill sites identified on a survey carried out on behalf of the DoE in 1973. These sites may have been closed or operational at this time.

*This data is sourced from the British Geological Survey.*

### 3.3 Historical landfill (LA/mapping records)

Records within 500m

1

Landfill sites identified from Local Authority records and high detail historical mapping.

Features are displayed on the Waste and landfill map on [page 22 >](#)

ID	Location	Site address	Source	Data type
2	161m SE	Refuse Tip	1966 mapping	Polygon

*This data is sourced from the Ordnance Survey/Groundsure and Local Authority records.*

### 3.4 Historical landfill (EA/NRW records)

Records within 500m

1

Known historical (closed) landfill sites (e.g. sites where there is no PPC permit or waste management licence currently in force). This includes sites that existed before the waste licensing regime and sites that have been licensed in the past but where a licence has been revoked, ceased to exist or surrendered and a certificate of completion has been issued.

Features are displayed on the Waste and landfill map on [page 22 >](#)

ID	Location	Details		
1	On site	<b>Site Address: Scotter Road/Parklands, Parklands, Scunthorpe</b> <b>Licence Holder Address: -</b>	<b>Waste Licence: Yes</b> <b>Site Reference: 55/19/0129, A129</b> <b>Waste Type: Inert, Industrial</b> <b>Environmental Permitting Regulations (Waste) Reference: -</b> <b>Licence Issue: 18/05/1977</b> <b>Licence Surrender: 29/05/1993</b>	<b>Operator: -</b> <b>Licence Holder: Mr M Waters</b> <b>First Recorded 31/12/1977</b> <b>Last Recorded: 31/12/1993</b>

*This data is sourced from the Environment Agency and Natural Resources Wales.*

### 3.5 Historical waste sites

Records within 500m

0

Waste site records derived from Local Authority planning records and high detail historical mapping.

*This data is sourced from Ordnance Survey/Groundsure and Local Authority records.*



### 3.6 Licensed waste sites

Records within 500m

0

Active or recently closed waste sites under Environment Agency/Natural Resources Wales regulation.

*This data is sourced from the Environment Agency and Natural Resources Wales.*

### 3.7 Waste exemptions

Records within 500m

20

Activities involving the storage, treatment, use or disposal of waste that are exempt from needing a permit. Exemptions have specific limits and conditions that must be adhered to.

Features are displayed on the Waste and landfill map on [page 22 >](#)

ID	Location	Site	Reference	Category	Sub-Category	Description
A	On site	-	WEX355250	Using waste exemption	On a farm	Burning of waste as a fuel in a small appliance
A	On site	-	WEX355250	Using waste exemption	On a farm	Spreading waste on agricultural land to confer benefit
A	On site	-	WEX355250	Using waste exemption	On a farm	Spreading waste on non-agricultural land to confer benefit
A	On site	-	WEX355250	Using waste exemption	On a farm	Use of mulch
A	On site	-	WEX355250	Using waste exemption	On a farm	Spreading of plant matter to confer benefit
A	On site	-	WEX355250	Using waste exemption	On a farm	Incorporation of ash into soil
A	On site	-	WEX355250	Using waste exemption	On a farm	Pig and poultry ash
A	On site	-	WEX355250	Disposing of waste exemption	On a farm	Deposit of waste from dredging of inland waters
A	On site	-	WEX355250	Disposing of waste exemption	On a farm	Deposit of waste from a portable sanitary convenience
A	On site	-	WEX355250	Disposing of waste exemption	On a farm	Disposal by incineration

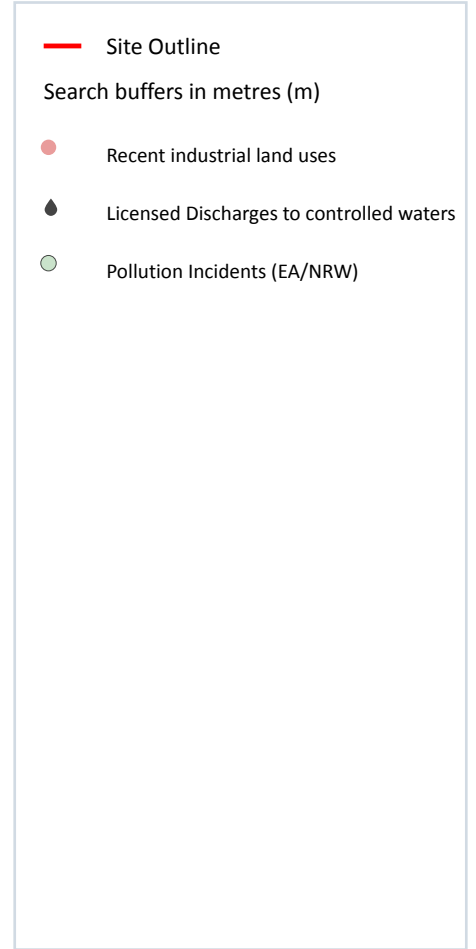


ID	Location	Site	Reference	Category	Sub-Category	Description
A	On site	-	WEX355250	Disposing of waste exemption	On a farm	Burning waste in the open
A	On site	-	WEX355250	Storing waste exemption	On a farm	Storage of waste in secure containers
B	52m E	DORCHESTER ROAD, SCUNTHORPE, DN17 1YH	WEX150713	Treating waste exemption	Not on a farm	Sorting and de-naturing of controlled drugs for disposal
B	52m E	DORCHESTER ROAD, SCUNTHORPE, DN17 1YH	WEX150713	Storing waste exemption	Not on a farm	Storage of waste in a secure place
B	52m E	DORCHESTER ROAD, SCUNTHORPE, DN17 1YH	WEX256045	Treating waste exemption	Not on a farm	Sorting and de-naturing of controlled drugs for disposal
B	52m E	DORCHESTER ROAD, SCUNTHORPE, DN17 1YH	WEX289024	Storing waste exemption	Not on a farm	Storage of waste in a secure place
B	52m E	DORCHESTER ROAD, SCUNTHORPE, DN17 1YH	WEX289024	Treating waste exemption	Not on a farm	Sorting and de-naturing of controlled drugs for disposal
3	394m S	BURRINGHAM ROAD, SCUNTHORPE, DN17 2AA	WEX284991	Treating waste exemption	Not on a farm	Sorting and de-naturing of controlled drugs for disposal
C	408m E	BRIDGEWATER ROAD, SCUNTHORPE, DN17 1SN	WEX164493	Treating waste exemption	Not on a Farm	Sorting and de-naturing of controlled drugs for disposal
C	408m E	BRIDGEWATER ROAD, SCUNTHORPE, DN17 1SN	WEX301403	Treating waste exemption	Not on a Farm	Sorting and de-naturing of controlled drugs for disposal

*This data is sourced from the Environment Agency and Natural Resources Wales.*



## 4 Current industrial land use



### 4.1 Recent industrial land uses

Records within 250m

8

Current potentially contaminative industrial sites.

Features are displayed on the Current industrial land use map on [page 26 >](#)

ID	Location	Company	Address	Activity	Category
1	On site	Mast (Telecommunication)	Lincolnshire, DN17	Telecommunications Features	Infrastructure and Facilities
3	124m SE	Electricity Sub Station	Lincolnshire, DN17	Electrical Features	Infrastructure and Facilities

ID	Location	Company	Address	Activity	Category
4	137m NE	Electricity Sub Station	Lincolnshire, DN17	Electrical Features	Infrastructure and Facilities
5	178m E	Master Green	8, Dawlish Court, Scunthorpe, Lincolnshire, DN17 1XA	Construction Completion Services	Construction Services
6	185m NE	Pump House	Lincolnshire, DN17	Water Pumping Stations	Industrial Features
7	186m E	Electricity Sub Station	Lincolnshire, DN17	Electrical Features	Infrastructure and Facilities
8	191m E	Electricity Sub Station	Lincolnshire, DN17	Electrical Features	Infrastructure and Facilities
9	195m E	Electricity Sub Station	Lincolnshire, DN17	Electrical Features	Infrastructure and Facilities

*This data is sourced from Ordnance Survey.*

## 4.2 Current or recent petrol stations

**Records within 500m**

**0**

Open, closed, under development and obsolete petrol stations.

*This data is sourced from Experian.*

## 4.3 Electricity cables

**Records within 500m**

**0**

High voltage underground electricity transmission cables.

*This data is sourced from National Grid.*

## 4.4 Gas pipelines

**Records within 500m**

**0**

High pressure underground gas transmission pipelines.

*This data is sourced from National Grid.*



## 4.5 Sites determined as Contaminated Land

Records within 500m

0

Contaminated Land Register of sites designated under Part 2a of the Environmental Protection Act 1990.

*This data is sourced from Local Authority records.*

## 4.6 Control of Major Accident Hazards (COMAH)

Records within 500m

0

Control of Major Accident Hazards (COMAH) sites. This data includes upper and lower tier sites, and includes a historical archive of COMAH sites and Notification of Installations Handling Hazardous Substances (NIHHS) records.

*This data is sourced from the Health and Safety Executive.*

## 4.7 Regulated explosive sites

Records within 500m

0

Sites registered and licensed by the Health and Safety Executive under the Manufacture and Storage of Explosives Regulations 2005 (MSER). The last update to this data was in April 2011.

*This data is sourced from the Health and Safety Executive.*

## 4.8 Hazardous substance storage/usage

Records within 500m

0

Consents granted for a site to hold certain quantities of hazardous substances at or above defined limits in accordance with the Planning (Hazardous Substances) Regulations 2015.

*This data is sourced from Local Authority records.*

## 4.9 Historical licensed industrial activities (IPC)

Records within 500m

0

Integrated Pollution Control (IPC) records of substance releases to air, land and water. This data represents a historical archive as the IPC regime has been superseded.

*This data is sourced from the Environment Agency and Natural Resources Wales.*



#### 4.10 Licensed industrial activities (Part A(1))

Records within 500m

0

Records of Part A(1) installations regulated under the Environmental Permitting (England and Wales) Regulations 2016 for the release of substances to the environment.

*This data is sourced from the Environment Agency and Natural Resources Wales.*

#### 4.11 Licensed pollutant release (Part A(2)/B)

Records within 500m

0

Records of Part A(2) and Part B installations regulated under the Environmental Permitting (England and Wales) Regulations 2016 for the release of substances to the environment.

*This data is sourced from Local Authority records.*

#### 4.12 Radioactive Substance Authorisations

Records within 500m

0

Records of the storage, use, accumulation and disposal of radioactive substances regulated under the Radioactive Substances Act 1993.

*This data is sourced from the Environment Agency and Natural Resources Wales.*

#### 4.13 Licensed Discharges to controlled waters

Records within 500m

8

Discharges of treated or untreated effluent to controlled waters under the Water Resources Act 1991.

Features are displayed on the Current industrial land use map on [page 26 >](#)

ID	Location	Address	Details	
2	On site	SCOTTER ROAD - SWS, WESTCLIFF, SCUNTHORPE, N LINCS	Effluent Type: SEWAGE DISCHARGES - SEWER STORM OVERFLOW - WATER COMPANY Permit Number: T/81/00909/O Permit Version: 1 Receiving Water: RIVER TRENT (TIDAL) TRIB	Status: PRE NRA LEGISLATION WHERE ISSUE DATE 01-SEP-89 (HISTORIC ONLY) Issue date: 29/01/1962 Effective Date: 29/01/1962 Revocation Date: -

ID	Location	Address	Details	
A	80m E	WESTCLIFFE NORTH BRISTOL ROAD, WESTCLIFFE, WESTCLIFFE NORTH	Effluent Type: SEWAGE DISCHARGES - SEWER STORM OVERFLOW - WATER COMPANY Permit Number: TSC4085 Permit Version: 1 Receiving Water: LOCAL DITCH	Status: VARIED UNDER EPR 2010 Issue date: 03/09/2010 Effective Date: 03/09/2010 Revocation Date: 12/08/2011
A	80m E	WESTCLIFF NORTH PUMPING STATION, BRISTOL ROAD, SCUNTHORPE, SOUTH HUMBERSIDE	Effluent Type: SEWAGE DISCHARGES - PUMPING STATION - WATER COMPANY Permit Number: T/81/40050/O Permit Version: 1 Receiving Water: WESTCLIFF BALANCING LAGOON	Status: POST NRA LEGISLATION WHERE ISSUE DATE > 31-AUG-89 (HISTORIC ONLY) Issue date: 14/02/1995 Effective Date: 14/02/1995 Revocation Date: -
B	362m SE	BURRINGHAM ROAD CSO, MIDLANDS, ENGLAND, ....., DN17 1SX	Effluent Type: SEWAGE DISCHARGES - SEWER STORM OVERFLOW - WATER COMPANY Permit Number: TSC376 Permit Version: 1 Receiving Water: BEAUCHAMPS WPG	Status: VARIED UNDER EPR 2010 Issue date: 03/09/2010 Effective Date: 03/09/2010 Revocation Date: 12/08/2011
B	362m SE	BURRINGHAM ROAD CSO, BURRINGHAM ROAD (B7450), SCUNTHORPE, LINCOLNSHIRE, DN17 2BH	Effluent Type: SEWAGE DISCHARGES - SEWER STORM OVERFLOW - WATER COMPANY Permit Number: T/81/08788/O Permit Version: 2 Receiving Water: WARPING DRAIN	Status: REVOKED (WRA 91, S88 & SCHED 10 AS AMENDED BY ENV ACT 1995) Issue date: 08/01/1982 Effective Date: 28/03/2006 Revocation Date: 20/02/2018
B	362m SE	BURRINGHAM ROAD CSO, BURRINGHAM ROAD (B7450), SCUNTHORPE, LINCOLNSHIRE, DN17 2BH	Effluent Type: SEWAGE DISCHARGES - SEWER STORM OVERFLOW - WATER COMPANY Permit Number: T/81/08788/O Permit Version: 1 Receiving Water: WARPING DRAIN	Status: REVOKED (WRA 91, S88 & SCHED 10 AS AMENDED BY ENV ACT 1995) Issue date: 08/01/1982 Effective Date: 08/01/1982 Revocation Date: 27/03/2006
B	362m SE	BURRINGHAM ROAD CSO, BURRINGHAM ROAD (B7450), SCUNTHORPE, LINCOLNSHIRE, DN17 2BH	Effluent Type: SEWAGE DISCHARGES - SEWER STORM OVERFLOW - WATER COMPANY Permit Number: T/81/08788/O Permit Version: 3 Receiving Water: WARPING DRAIN	Status: REVOKED (WRA 91, S88 & SCHED 10 AS AMENDED BY ENV ACT 1995) Issue date: 08/01/1982 Effective Date: 21/02/2018 Revocation Date: 07/03/2018
B	362m SE	BURRINGHAM ROAD CSO, BURRINGHAM ROAD (B7450), SCUNTHORPE, LINCOLNSHIRE, DN17 2BH	Effluent Type: SEWAGE DISCHARGES - SEWER STORM OVERFLOW - WATER COMPANY Permit Number: T/81/08788/O Permit Version: 1 Receiving Water: WARPING DRAIN	Status: REVOKED (WRA 91, S88 & SCHED 10 AS AMENDED BY ENV ACT 1995) Issue date: 08/01/1982 Effective Date: 08/01/1982 Revocation Date: 27/03/2006

This data is sourced from the Environment Agency and Natural Resources Wales.



#### 4.14 Pollutant release to surface waters (Red List)

Records within 500m

0

Discharges of specified substances under the Environmental Protection (Prescribed Processes and Substances) Regulations 1991.

*This data is sourced from the Environment Agency and Natural Resources Wales.*

#### 4.15 Pollutant release to public sewer

Records within 500m

0

Discharges of Special Category Effluents to the public sewer.

*This data is sourced from the Environment Agency and Natural Resources Wales.*

#### 4.16 List 1 Dangerous Substances

Records within 500m

0

Discharges of substances identified on List I of European Directive E 2006/11/EC, and regulated under the Environmental Damage (Prevention and Remediation) Regulations 2015.

*This data is sourced from the Environment Agency and Natural Resources Wales.*

#### 4.17 List 2 Dangerous Substances

Records within 500m

0

Discharges of substances identified on List II of European Directive E 2006/11/EC, and regulated under the Environmental Damage (Prevention and Remediation) Regulations 2015.

*This data is sourced from the Environment Agency and Natural Resources Wales.*

#### 4.18 Pollution Incidents (EA/NRW)

Records within 500m

7

Records of substantiated pollution incidents. Since 2006 this data has only included category 1 (major) and 2 (significant) pollution incidents.

Features are displayed on the Current industrial land use map on [page 26 >](#)



ID	Location	Details	
B	355m SE	Incident Date: 07/02/2003 Incident Identification: 135563 Pollutant: Contaminated Water Pollutant Description: Other Contaminated Water	Water Impact: Category 3 (Minor) Land Impact: Category 4 (No Impact) Air Impact: Category 4 (No Impact)
C	356m SE	Incident Date: 24/10/2002 Incident Identification: 116498 Pollutant: Oils and Fuel Pollutant Description: Mixed/Waste Oils	Water Impact: Category 3 (Minor) Land Impact: Category 4 (No Impact) Air Impact: Category 3 (Minor)
C	357m SE	Incident Date: 08/12/2002 Incident Identification: 125175 Pollutant: Contaminated Water Pollutant Description: Other Contaminated Water	Water Impact: Category 3 (Minor) Land Impact: Category 3 (Minor) Air Impact: Category 3 (Minor)
C	360m SE	Incident Date: 21/08/2001 Incident Identification: 25830 Pollutant: Oils and Fuel Pollutant Description: Unidentified Oil	Water Impact: Category 3 (Minor) Land Impact: Category 4 (No Impact) Air Impact: Category 4 (No Impact)
B	360m SE	Incident Date: 02/02/2003 Incident Identification: 134507 Pollutant: Sewage Materials Pollutant Description: Crude Sewage	Water Impact: Category 3 (Minor) Land Impact: Category 3 (Minor) Air Impact: Category 3 (Minor)
C	395m SE	Incident Date: 06/03/2003 Incident Identification: 142285 Pollutant: Sewage Materials Pollutant Description: Crude Sewage	Water Impact: Category 3 (Minor) Land Impact: Category 4 (No Impact) Air Impact: Category 4 (No Impact)
10	430m E	Incident Date: 03/07/2003 Incident Identification: 170656 Pollutant: Contaminated Water Pollutant Description: Firefighting Run-Off	Water Impact: Category 4 (No Impact) Land Impact: Category 4 (No Impact) Air Impact: Category 4 (No Impact)

*This data is sourced from the Environment Agency and Natural Resources Wales.*

## 4.19 Pollution inventory substances

**Records within 500m**

**0**

The pollution inventory (substances) includes reporting on annual emissions of certain regulated substances to air, controlled waters and land. A reporting threshold for each substance is also included. Where emissions fall below the reporting threshold, no value will be given. The data is given for the most recent complete year available.

*This data is sourced from the Environment Agency and the Scottish Environment Protection Agency.*



## 4.20 Pollution inventory waste transfers

Records within 500m

0

The pollution inventory (waste transfers) includes reporting on annual transfers and recovery/disposal of controlled wastes from a site. A reporting threshold for each waste type is also included. Where releases fall below the reporting threshold, no value will be given. The data is given for the most recent complete year available.

*This data is sourced from the Environment Agency and the Scottish Environment Protection Agency.*

## 4.21 Pollution inventory radioactive waste

Records within 500m

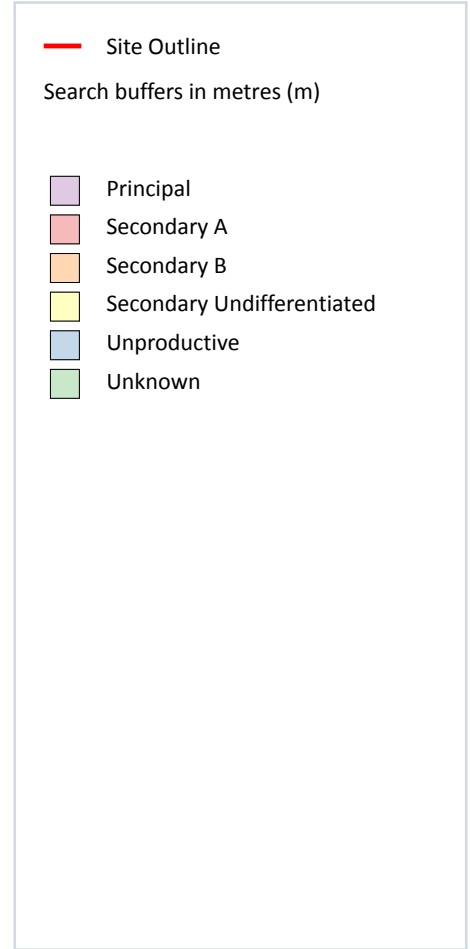
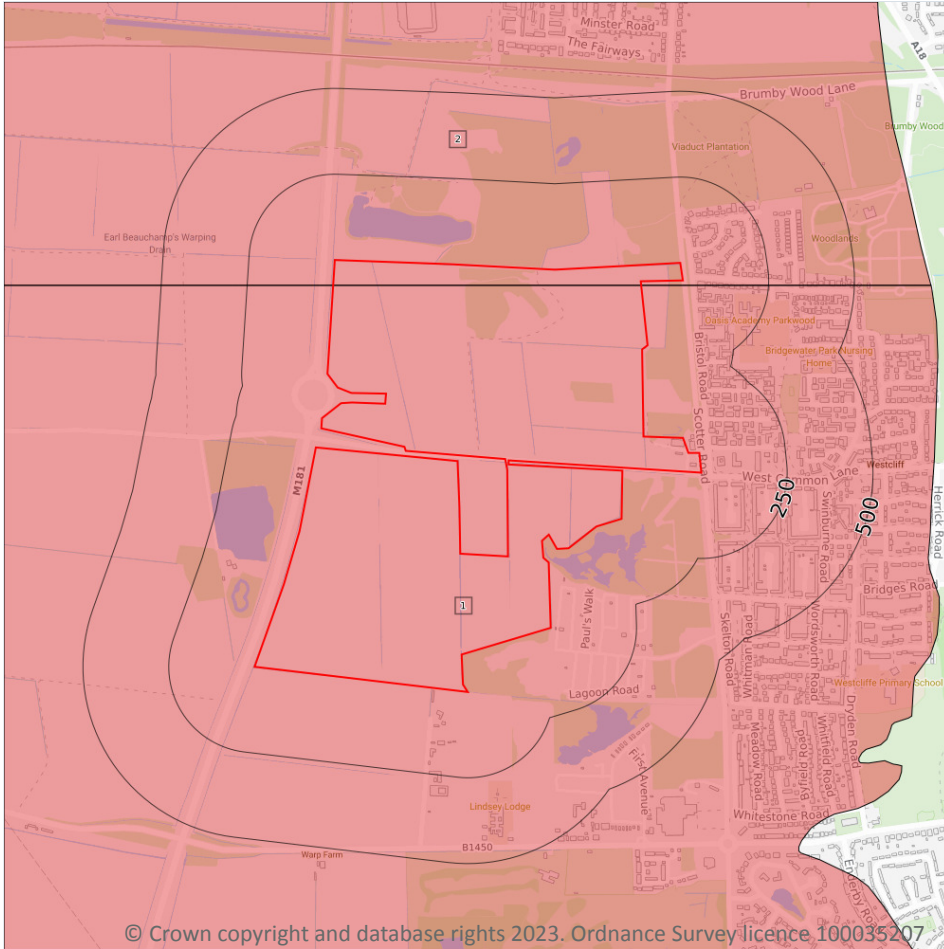
0

The pollution inventory (radioactive wastes) includes reporting on annual releases of radioactive substances from a site, including the means of release. Where releases fall below the reporting threshold, no value will be given. The data is given for the most recent complete year available.

*This data is sourced from the Environment Agency and the Scottish Environment Protection Agency.*



## 5 Hydrogeology - Superficial aquifer



### 5.1 Superficial aquifer

Records within 500m

2

Aquifer status of groundwater held within superficial geology.

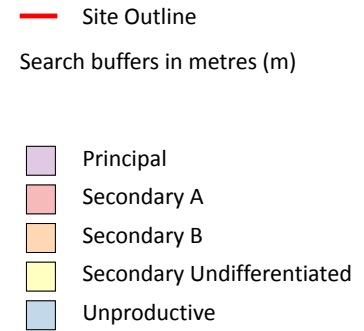
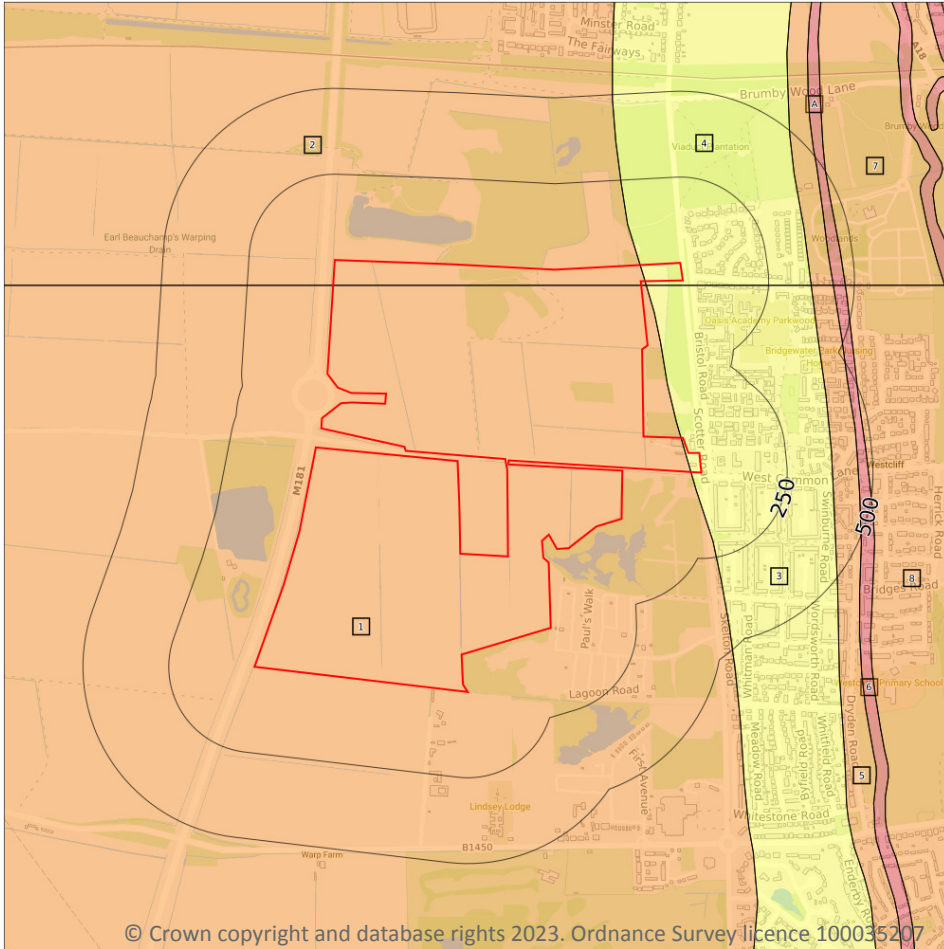
Features are displayed on the Hydrogeology map on [page 34](#) >

ID	Location	Designation	Description
1	On site	Secondary A	Permeable layers capable of supporting water supplies at a local rather than strategic scale, and in some cases forming an important source of base flow to rivers. These are generally aquifers formerly classified as minor aquifers
2	On site	Secondary A	Permeable layers capable of supporting water supplies at a local rather than strategic scale, and in some cases forming an important source of base flow to rivers. These are generally aquifers formerly classified as minor aquifers

*This data is sourced from the British Geological Survey, the Environment Agency and Natural Resources Wales.*



## Bedrock aquifer



### 5.2 Bedrock aquifer

Records within 500m

10

Aquifer status of groundwater held within bedrock geology.

Features are displayed on the Bedrock aquifer map on [page 36](#) >

ID	Location	Designation	Description
1	On site	Secondary B	Predominantly lower permeability layers which may store/yield limited amounts of groundwater due to localised features such as fissures, thin permeable horizons and weathering. These are generally the water-bearing parts of the former non-aquifers
2	On site	Secondary B	Predominantly lower permeability layers which may store/yield limited amounts of groundwater due to localised features such as fissures, thin permeable horizons and weathering. These are generally the water-bearing parts of the former non-aquifers

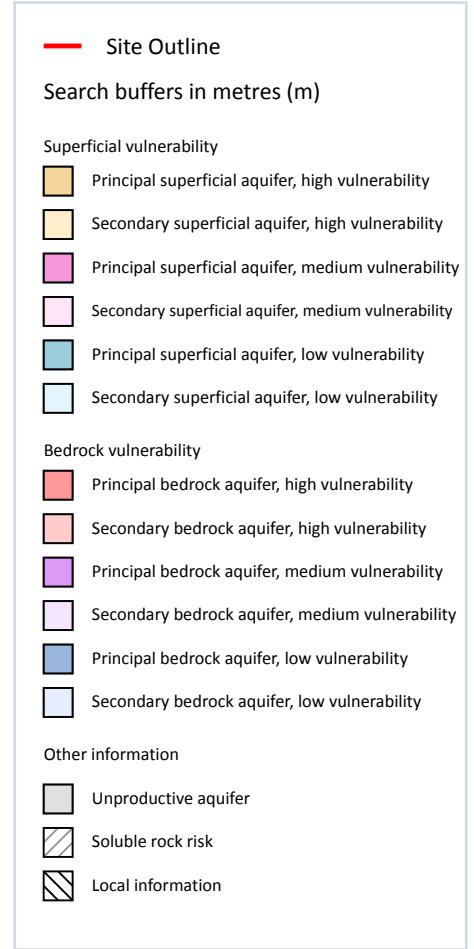
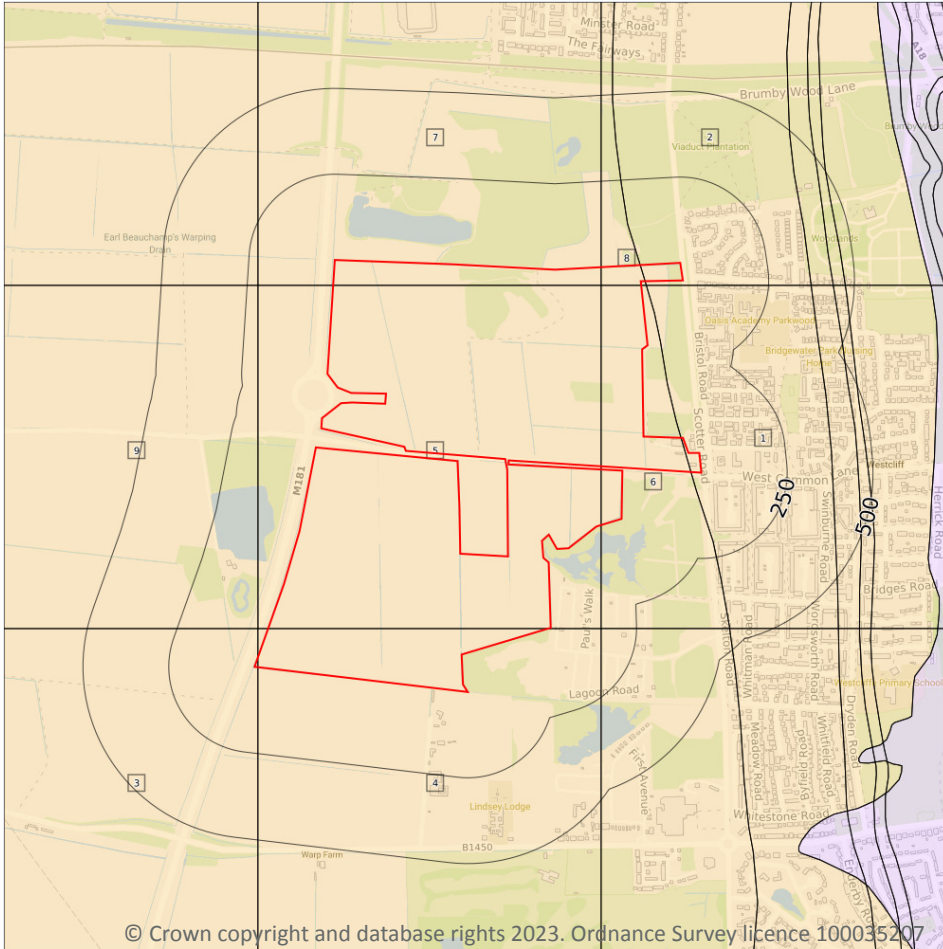


ID	Location	Designation	Description
3	On site	Secondary (undifferentiated)	Assigned where it is not possible to attribute either category A or B to a rock type. In general these layers have previously been designated as both minor and non-aquifer in different locations due to the variable characteristics of the rock type
4	On site	Secondary (undifferentiated)	Assigned where it is not possible to attribute either category A or B to a rock type. In general these layers have previously been designated as both minor and non-aquifer in different locations due to the variable characteristics of the rock type
A	369m NE	Secondary B	Predominantly lower permeability layers which may store/yield limited amounts of groundwater due to localised features such as fissures, thin permeable horizons and weathering. These are generally the water-bearing parts of the former non-aquifers
5	374m NE	Secondary B	Predominantly lower permeability layers which may store/yield limited amounts of groundwater due to localised features such as fissures, thin permeable horizons and weathering. These are generally the water-bearing parts of the former non-aquifers
A	430m NE	Secondary A	Permeable layers capable of supporting water supplies at a local rather than strategic scale, and in some cases forming an important source of base flow to rivers. These are generally aquifers formerly classified as minor aquifers
6	439m NE	Secondary A	Permeable layers capable of supporting water supplies at a local rather than strategic scale, and in some cases forming an important source of base flow to rivers. These are generally aquifers formerly classified as minor aquifers
7	464m NE	Secondary B	Predominantly lower permeability layers which may store/yield limited amounts of groundwater due to localised features such as fissures, thin permeable horizons and weathering. These are generally the water-bearing parts of the former non-aquifers
8	474m NE	Secondary B	Predominantly lower permeability layers which may store/yield limited amounts of groundwater due to localised features such as fissures, thin permeable horizons and weathering. These are generally the water-bearing parts of the former non-aquifers

*This data is sourced from the British Geological Survey, the Environment Agency and Natural Resources Wales.*



## Groundwater vulnerability



### 5.3 Groundwater vulnerability

Records within 50m

9

An assessment of the vulnerability of groundwater to a pollutant discharged at ground level based on the hydrological, geological, hydrogeological and soil properties within a one kilometre square grid. Groundwater vulnerability is described as High, Medium or Low as follows:

- High - Areas able to easily transmit pollution to groundwater. They are likely to be characterised by high leaching soils and the absence of low permeability superficial deposits.
- Medium - Intermediate between high and low vulnerability.
- Low - Areas that provide the greatest protection from pollution. They are likely to be characterised by low leaching soils and/or the presence of superficial deposits characterised by a low permeability.

Features are displayed on the Groundwater vulnerability map on [page 38](#) >



ID	Location	Summary	Soil / surface	Superficial geology	Bedrock geology
1	On site	<b>Summary Classification:</b> Secondary superficial aquifer - High Vulnerability <b>Combined classification:</b> Productive Bedrock Aquifer, Productive Superficial Aquifer	<b>Leaching class:</b> High <b>Infiltration value:</b> >70% <b>Dilution value:</b> <300mm/year	<b>Vulnerability:</b> High <b>Aquifer type:</b> Secondary <b>Thickness:</b> 3-10m <b>Patchiness value:</b> >90% <b>Recharge potential:</b> High	<b>Vulnerability:</b> Medium <b>Aquifer type:</b> Secondary <b>Flow mechanism:</b> Well connected fractures
2	On site	<b>Summary Classification:</b> Secondary superficial aquifer - High Vulnerability <b>Combined classification:</b> Productive Bedrock Aquifer, Productive Superficial Aquifer	<b>Leaching class:</b> High <b>Infiltration value:</b> >70% <b>Dilution value:</b> <300mm/year	<b>Vulnerability:</b> High <b>Aquifer type:</b> Secondary <b>Thickness:</b> 3-10m <b>Patchiness value:</b> >90% <b>Recharge potential:</b> High	<b>Vulnerability:</b> Medium <b>Aquifer type:</b> Secondary <b>Flow mechanism:</b> Well connected fractures
3	On site	<b>Summary Classification:</b> Secondary superficial aquifer - High Vulnerability <b>Combined classification:</b> Productive Bedrock Aquifer, Productive Superficial Aquifer	<b>Leaching class:</b> Intermediate <b>Infiltration value:</b> >70% <b>Dilution value:</b> <300mm/year	<b>Vulnerability:</b> High <b>Aquifer type:</b> Secondary <b>Thickness:</b> >10m <b>Patchiness value:</b> >90% <b>Recharge potential:</b> High	<b>Vulnerability:</b> Low <b>Aquifer type:</b> Secondary <b>Flow mechanism:</b> Well connected fractures
4	On site	<b>Summary Classification:</b> Secondary superficial aquifer - High Vulnerability <b>Combined classification:</b> Productive Bedrock Aquifer, Productive Superficial Aquifer	<b>Leaching class:</b> High <b>Infiltration value:</b> >70% <b>Dilution value:</b> <300mm/year	<b>Vulnerability:</b> High <b>Aquifer type:</b> Secondary <b>Thickness:</b> >10m <b>Patchiness value:</b> >90% <b>Recharge potential:</b> High	<b>Vulnerability:</b> Medium <b>Aquifer type:</b> Secondary <b>Flow mechanism:</b> Well connected fractures
5	On site	<b>Summary Classification:</b> Secondary superficial aquifer - High Vulnerability <b>Combined classification:</b> Productive Bedrock Aquifer, Productive Superficial Aquifer	<b>Leaching class:</b> Intermediate <b>Infiltration value:</b> >70% <b>Dilution value:</b> <300mm/year	<b>Vulnerability:</b> High <b>Aquifer type:</b> Secondary <b>Thickness:</b> >10m <b>Patchiness value:</b> >90% <b>Recharge potential:</b> High	<b>Vulnerability:</b> Low <b>Aquifer type:</b> Secondary <b>Flow mechanism:</b> Well connected fractures
6	On site	<b>Summary Classification:</b> Secondary superficial aquifer - High Vulnerability <b>Combined classification:</b> Productive Bedrock Aquifer, Productive Superficial Aquifer	<b>Leaching class:</b> High <b>Infiltration value:</b> >70% <b>Dilution value:</b> <300mm/year	<b>Vulnerability:</b> High <b>Aquifer type:</b> Secondary <b>Thickness:</b> 3-10m <b>Patchiness value:</b> >90% <b>Recharge potential:</b> High	<b>Vulnerability:</b> Medium <b>Aquifer type:</b> Secondary <b>Flow mechanism:</b> Well connected fractures



ID	Location	Summary	Soil / surface	Superficial geology	Bedrock geology
7	On site	<b>Summary Classification:</b> Secondary superficial aquifer - High Vulnerability <b>Combined classification:</b> Productive Bedrock Aquifer, Productive Superficial Aquifer	<b>Leaching class:</b> Intermediate <b>Infiltration value:</b> >70% <b>Dilution value:</b> <300mm/year	<b>Vulnerability:</b> High <b>Aquifer type:</b> Secondary <b>Thickness:</b> >10m <b>Patchiness value:</b> >90% <b>Recharge potential:</b> High	<b>Vulnerability:</b> Low <b>Aquifer type:</b> Secondary <b>Flow mechanism:</b> Well connected fractures
8	On site	<b>Summary Classification:</b> Secondary superficial aquifer - High Vulnerability <b>Combined classification:</b> Productive Bedrock Aquifer, Productive Superficial Aquifer	<b>Leaching class:</b> High <b>Infiltration value:</b> >70% <b>Dilution value:</b> <300mm/year	<b>Vulnerability:</b> High <b>Aquifer type:</b> Secondary <b>Thickness:</b> 3-10m <b>Patchiness value:</b> >90% <b>Recharge potential:</b> High	<b>Vulnerability:</b> Medium <b>Aquifer type:</b> Secondary <b>Flow mechanism:</b> Well connected fractures
9	28m SW	<b>Summary Classification:</b> Secondary superficial aquifer - High Vulnerability <b>Combined classification:</b> Productive Bedrock Aquifer, Productive Superficial Aquifer	<b>Leaching class:</b> Intermediate <b>Infiltration value:</b> >70% <b>Dilution value:</b> <300mm/year	<b>Vulnerability:</b> High <b>Aquifer type:</b> Secondary <b>Thickness:</b> >10m <b>Patchiness value:</b> >90% <b>Recharge potential:</b> High	<b>Vulnerability:</b> Low <b>Aquifer type:</b> Secondary <b>Flow mechanism:</b> Well connected fractures

This data is sourced from the British Geological Survey, the Environment Agency and Natural Resources Wales.

## 5.4 Groundwater vulnerability- soluble rock risk

Records on site

0

This dataset identifies areas where solution features that enable rapid movement of a pollutant may be present within a 1km grid square.

This data is sourced from the British Geological Survey and the Environment Agency.

## 5.5 Groundwater vulnerability- local information

Records on site

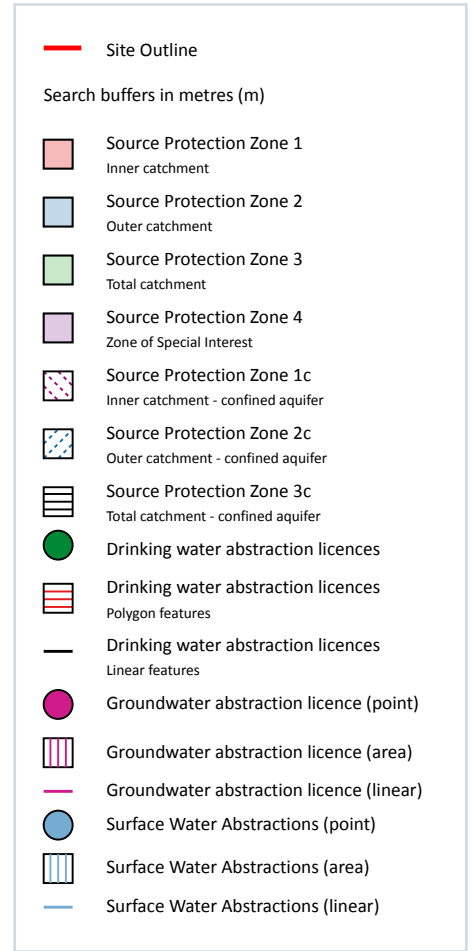
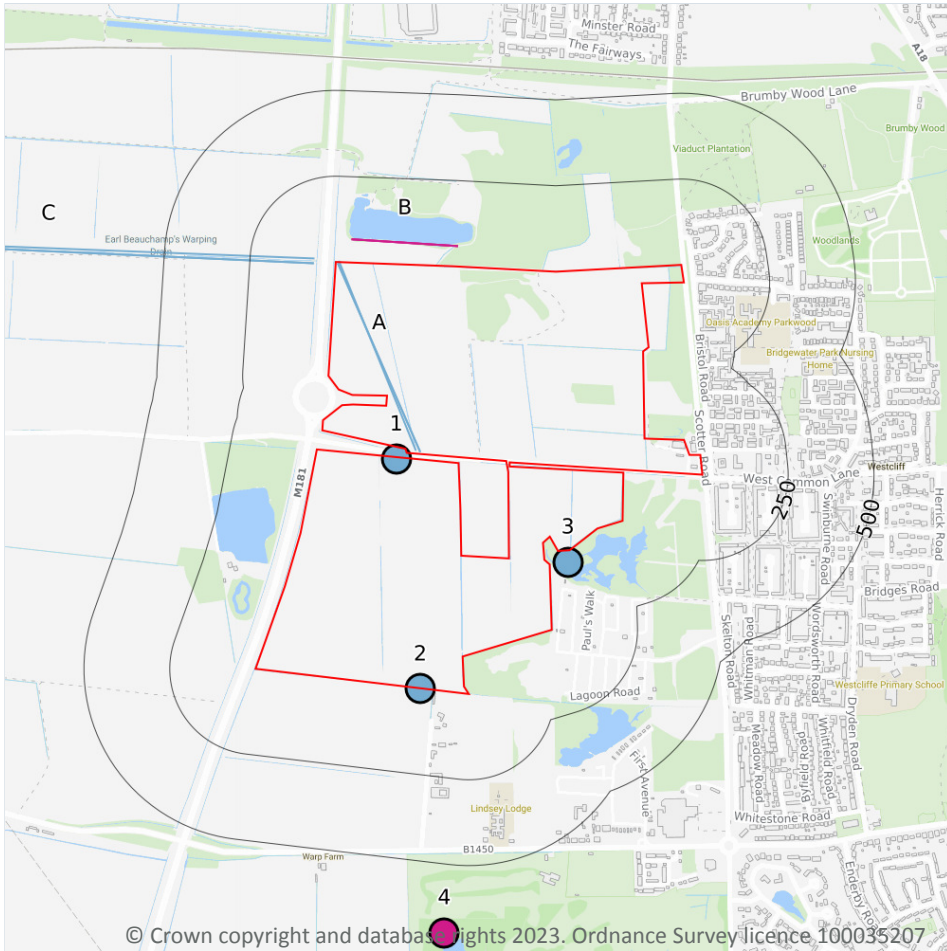
0

This dataset identifies areas where additional local information affecting vulnerability is held by the Environment Agency. Further information can be obtained by contacting the Environment Agency local Area groundwater team through the Environment Agency National Customer Call Centre on 03798 506 506 or by email on [enquiries@environment-agency.gov.uk](mailto:enquiries@environment-agency.gov.uk) ↗.

This data is sourced from the British Geological Survey and the Environment Agency.



## Abstractions and Source Protection Zones



### 5.6 Groundwater abstractions

Records within 2000m

4

Licensed groundwater abstractions for sites extracting more than 20 cubic metres of water a day and includes active and historical records. The data may be for a single abstraction point, between two points (line data) or a larger area.

Features are displayed on the Abstractions and Source Protection Zones map on [page 41](#) >

ID	Location	Details	
B	59m N	Status: Historical Licence No: 03/28/81/0045 Details: Spray Irrigation - Direct Direct Source: Groundwater Midlands Region Point: U/G STRATA (BLOWN SANDS) BRUMBY COMMON WEST, SCUNTHORPE Data Type: Line Name: W S CHAPMAN & SONS Easting: 486270 Northing: 410140	Annual Volume (m <sup>3</sup> ): - Max Daily Volume (m <sup>3</sup> ): - Original Application No: - Original Start Date: 25/05/2001 Expiry Date: 31/03/2008 Issue No: 1 Version Start Date: 25/05/2001 Version End Date: -
B	59m N	Status: Historical Licence No: 03/28/81/0045/1 Details: Spray Irrigation - Direct Direct Source: Groundwater Midlands Region Point: U/G STRATA (BLOWN SANDS) BRUMBY COMMON WEST, SCUNTHORPE Data Type: Line Name: Elsie Valerie Threadgold Easting: 486270 Northing: 410140	Annual Volume (m <sup>3</sup> ): 15000 Max Daily Volume (m <sup>3</sup> ): 2500 Original Application No: - Original Start Date: 08/08/2003 Expiry Date: 31/03/2015 Issue No: 2 Version Start Date: 17/05/2012 Version End Date: -
B	59m N	Status: Historical Licence No: 03/28/81/0045/1/RO1 Details: Spray Irrigation - Direct Direct Source: Groundwater Midlands Region Point: U/G STRATA (BLOWN SANDS) BRUMBY COMMON WEST, SCUNTHORPE Data Type: Line Name: Elsie Valerie Threadgold Easting: 486270 Northing: 410140	Annual Volume (m <sup>3</sup> ): 15000 Max Daily Volume (m <sup>3</sup> ): 2500 Original Application No: - Original Start Date: 01/04/2015 Expiry Date: 31/03/2027 Issue No: 1 Version Start Date: 03/12/2018 Version End Date: -
4	698m S	Status: Active Licence No: 03/28/81/0039 Details: Spray Irrigation - Direct Direct Source: Groundwater Midlands Region Point: SCUNTHORPE GOLF CLUB - ASHBY DECOY Data Type: Point Name: ASHBY DECOY GOLF CLUB Easting: 486540 Northing: 408120	Annual Volume (m <sup>3</sup> ): 15000 Max Daily Volume (m <sup>3</sup> ): 200 Original Application No: - Original Start Date: 20/01/1997 Expiry Date: - Issue No: 100 Version Start Date: 03/12/2018 Version End Date: -

*This data is sourced from the Environment Agency and Natural Resources Wales.*



## 5.7 Surface water abstractions

Records within 2000m

33

Licensed surface water abstractions for sites extracting more than 20 cubic metres of water a day and includes active and historical records. The data may be for a single abstraction point, a stretch of watercourse or a larger area.

Features are displayed on the Abstractions and Source Protection Zones map on [page 41](#) >

ID	Location	Details	
1	On site	Status: Historical Licence No: 03/28/81/0012 Details: Spray Irrigation - Direct Direct Source: Surface Water Midlands Region Point: BRUMBY - TRIBUTARY OF WARPING DRAIN (1) Data Type: Point Name: W S CHAPMAN & SONS Easting: 486400 Northing: 409500	Annual Volume (m <sup>3</sup> ): - Max Daily Volume (m <sup>3</sup> ): - Original Application No: - Original Start Date: 13/04/1966 Expiry Date: - Issue No: 100 Version Start Date: 21/06/1966 Version End Date: -
A	On site	Status: Historical Licence No: 03/28/81/0046 Details: Spray Irrigation - Direct Direct Source: Surface Water Midlands Region Point: EARL BEAUCHAMPS WARPING DRAIN - REACH 1 Data Type: Line Name: W S CHAPMAN & SONS Easting: 486470 Northing: 409520	Annual Volume (m <sup>3</sup> ): - Max Daily Volume (m <sup>3</sup> ): - Original Application No: - Original Start Date: - Expiry Date: 31/03/2008 Issue No: 1 Version Start Date: 08/06/2001 Version End Date: -
A	On site	Status: Historical Licence No: 03/28/81/0046/1 Details: Spray Irrigation - Direct Direct Source: Surface Water Midlands Region Point: EARL BEAUCHAMPS WARPING DRAIN - REACH 1 Data Type: Line Name: W S CHAPMAN & SONS Easting: 486470 Northing: 409520	Annual Volume (m <sup>3</sup> ): 48316 Max Daily Volume (m <sup>3</sup> ): 2500 Original Application No: - Original Start Date: 08/08/2003 Expiry Date: 31/03/2015 Issue No: 1 Version Start Date: 08/08/2003 Version End Date: -



ID	Location	Details	
A	On site	<b>Status: Historical</b> <b>Licence No: 03/28/81/0046/1/R01</b> <b>Details: Spray Irrigation - Direct</b> <b>Direct Source: Surface Water Midlands Region</b> <b>Point: EARL BEAUCHAMPS WARPING DRAIN - REACH 1</b> <b>Data Type: Line</b> <b>Name: W S CHAPMAN &amp; SONS LIMITED</b> <b>Easting: 486457</b> <b>Northing: 409525</b>	<b>Annual Volume (m<sup>3</sup>): 48316</b> <b>Max Daily Volume (m<sup>3</sup>): 2500</b> <b>Original Application No: -</b> <b>Original Start Date: 01/04/2015</b> <b>Expiry Date: 31/03/2027</b> <b>Issue No: 1</b> <b>Version Start Date: 01/04/2015</b> <b>Version End Date: -</b>
2	1m S	Status: Historical Licence No: 03/28/81/0037 Details: Spray Irrigation - Direct Direct Source: Surface Water Midlands Region Point: NORTH GRANGE FARM,BURRINGHAM - WARREN DRAIN Data Type: Point Name: J JACKSON LTD Easting: 486470 Northing: 408830	Annual Volume (m <sup>3</sup> ): 20700 Max Daily Volume (m <sup>3</sup> ): 2200 Original Application No: - Original Start Date: 06/09/1996 Expiry Date: - Issue No: 100 Version Start Date: 06/09/1996 Version End Date: -
3	33m SE	Status: Historical Licence No: 03/28/81/0012 Details: Spray Irrigation - Direct Direct Source: Surface Water Midlands Region Point: BRUMBY - TRIBUTARY OF WARPING DRAIN (2) Data Type: Point Name: W S CHAPMAN & SONS Easting: 486900 Northing: 409200	Annual Volume (m <sup>3</sup> ): - Max Daily Volume (m <sup>3</sup> ): - Original Application No: - Original Start Date: 13/04/1966 Expiry Date: - Issue No: 100 Version Start Date: 21/06/1966 Version End Date: -
C	62m NW	<b>Status: Historical</b> <b>Licence No: 03/28/81/0046/1/R01</b> <b>Details: Spray Irrigation - Direct</b> <b>Direct Source: Surface Water Midlands Region</b> <b>Point: EARL BEAUCHAMPS WARPING DRAIN - REACH 2</b> <b>Data Type: Line</b> <b>Name: W S CHAPMAN &amp; SONS LIMITED</b> <b>Easting: 486162</b> <b>Northing: 410084</b>	<b>Annual Volume (m<sup>3</sup>): 48316</b> <b>Max Daily Volume (m<sup>3</sup>): 2500</b> <b>Original Application No: -</b> <b>Original Start Date: 01/04/2015</b> <b>Expiry Date: 31/03/2027</b> <b>Issue No: 1</b> <b>Version Start Date: 01/04/2015</b> <b>Version End Date: -</b>
C	63m NW	Status: Historical Licence No: 03/28/81/0046 Details: Spray Irrigation - Direct Direct Source: Surface Water Midlands Region Point: EARL BEAUCHAMPS WARPING DRAIN - REACH 2 Data Type: Line Name: W S CHAPMAN & SONS Easting: 486160 Northing: 410070	Annual Volume (m <sup>3</sup> ): - Max Daily Volume (m <sup>3</sup> ): - Original Application No: - Original Start Date: - Expiry Date: 31/03/2008 Issue No: 1 Version Start Date: 08/06/2001 Version End Date: -



ID	Location	Details	
C	63m NW	Status: Historical Licence No: 03/28/81/0046/1 Details: Spray Irrigation - Direct Direct Source: Surface Water Midlands Region Point: EARL BEAUCHAMPS WARPING DRAIN - REACH 2 Data Type: Line Name: W S CHAPMAN & SONS Easting: 486160 Northing: 410070	Annual Volume (m <sup>3</sup> ): 48316 Max Daily Volume (m <sup>3</sup> ): 2500 Original Application No: - Original Start Date: 08/08/2003 Expiry Date: 31/03/2015 Issue No: 1 Version Start Date: 08/08/2003 Version End Date: -
-	963m SW	Status: Active Licence No: 03/28/81/0026 Details: Transfer Between Sources (Pre Water Act 2003) Direct Source: Surface Water Midlands Region Point: HEALEYS DRAIN Data Type: Line Name: J JACKSON LTD Easting: 485160 Northing: 408400	Annual Volume (m <sup>3</sup> ): 158000 Max Daily Volume (m <sup>3</sup> ): 6400 Original Application No: NPS/WR/033887 Original Start Date: 16/09/1993 Expiry Date: - Issue No: 102 Version Start Date: 18/05/2020 Version End Date: -
-	1028m SW	Status: Historical Licence No: 03/28/81/0026 Details: Spray Irrigation - Direct Direct Source: Surface Water Midlands Region Point: NORTH GRANGE FARM,BURRINGHAM - HEALEYS DRAIN Data Type: Point Name: J JACKSON LTD Easting: 485080 Northing: 408410	Annual Volume (m <sup>3</sup> ): - Max Daily Volume (m <sup>3</sup> ): - Original Application No: - Original Start Date: 16/09/1993 Expiry Date: - Issue No: 101 Version Start Date: 04/09/2002 Version End Date: -
-	1028m SW	Status: Active Licence No: 03/28/81/0026 Details: Spray Irrigation - Storage Direct Source: Surface Water Midlands Region Point: NORTH GRANGE FARM,BURRINGHAM - HEALEYS DRAIN Data Type: Point Name: J JACKSON LTD Easting: 485080 Northing: 408410	Annual Volume (m <sup>3</sup> ): 158000 Max Daily Volume (m <sup>3</sup> ): 6400 Original Application No: NPS/WR/033887 Original Start Date: 16/09/1993 Expiry Date: - Issue No: 102 Version Start Date: 18/05/2020 Version End Date: -
-	1033m SW	Status: Active Licence No: 03/28/81/0026 Details: Spray Irrigation - Direct Direct Source: Surface Water Midlands Region Point: UN-NAMED DRAIN IN BURRINGHAM Data Type: Line Name: J JACKSON LTD Easting: 485160 Northing: 407900	Annual Volume (m <sup>3</sup> ): 158000 Max Daily Volume (m <sup>3</sup> ): 6400 Original Application No: NPS/WR/033887 Original Start Date: 16/09/1993 Expiry Date: - Issue No: 102 Version Start Date: 18/05/2020 Version End Date: -



ID	Location	Details	
-	1297m SW	Status: Active Licence No: 03/28/81/0026 Details: Transfer Between Sources (Pre Water Act 2003) Direct Source: Surface Water Midlands Region Point: HEALEYS DRAIN Data Type: Line Name: J JACKSON LTD Easting: 484530 Northing: 407900	Annual Volume (m <sup>3</sup> ): 158000 Max Daily Volume (m <sup>3</sup> ): 6400 Original Application No: NPS/WR/033887 Original Start Date: 16/09/1993 Expiry Date: - Issue No: 102 Version Start Date: 18/05/2020 Version End Date: -
-	1297m SW	Status: Active Licence No: 03/28/81/0026 Details: Spray Irrigation - Direct Direct Source: Surface Water Midlands Region Point: HEALEYS DRAIN Data Type: Line Name: J JACKSON LTD Easting: 484530 Northing: 407900	Annual Volume (m <sup>3</sup> ): 158000 Max Daily Volume (m <sup>3</sup> ): 6400 Original Application No: NPS/WR/033887 Original Start Date: 16/09/1993 Expiry Date: - Issue No: 102 Version Start Date: 18/05/2020 Version End Date: -
-	1366m N	Status: Historical Licence No: 03/28/81/0035 Details: Spray Irrigation - Direct Direct Source: Surface Water Midlands Region Point: FRODINGHAM GRANGE FARM,GUNNESS - SOAKMERE DRAIN Data Type: Point Name: NORMAN JACKSON (FLIXBOROUGH) LIMITED Easting: 486240 Northing: 411440	Annual Volume (m <sup>3</sup> ): - Max Daily Volume (m <sup>3</sup> ): - Original Application No: - Original Start Date: 22/07/1996 Expiry Date: 31/10/2006 Issue No: 100 Version Start Date: 22/07/1996 Version End Date: -
-	1366m N	Status: Historical Licence No: 03/28/81/0035/1 Details: Spray Irrigation - Direct Direct Source: Surface Water Midlands Region Point: FRODINGHAM GRANGE FARM,GUNNESS - SOAKMERE DRAIN Data Type: Point Name: NORMAN JACKSON (FLIXBOROUGH) LIMITED Easting: 486240 Northing: 411440	Annual Volume (m <sup>3</sup> ): 21000 Max Daily Volume (m <sup>3</sup> ): 2200 Original Application No: - Original Start Date: 08/08/2003 Expiry Date: 31/03/2015 Issue No: 1 Version Start Date: 16/03/2005 Version End Date: -
-	1492m SW	Status: Active Licence No: 03/28/81/0025 Details: Spray Irrigation - Direct Direct Source: Surface Water Midlands Region Point: BURREINGHAM - HEALEYS DRAIN (B) Data Type: Point Name: THORNTON Easting: 484570 Northing: 408430	Annual Volume (m <sup>3</sup> ): 24000 Max Daily Volume (m <sup>3</sup> ): 1265 Original Application No: - Original Start Date: 29/01/1993 Expiry Date: - Issue No: 100 Version Start Date: 03/12/2018 Version End Date: -



ID	Location	Details	
-	1540m SW	Status: Active Licence No: 03/28/81/0026 Details: Spray Irrigation - Direct Direct Source: Surface Water Midlands Region Point: HEALEYS DRAIN Data Type: Line Name: J JACKSON LTD Easting: 484520 Northing: 408430	Annual Volume (m <sup>3</sup> ): 158000 Max Daily Volume (m <sup>3</sup> ): 6400 Original Application No: NPS/WR/033887 Original Start Date: 16/09/1993 Expiry Date: - Issue No: 102 Version Start Date: 18/05/2020 Version End Date: -
-	1540m SW	Status: Active Licence No: 03/28/81/0026 Details: Transfer Between Sources (Pre Water Act 2003) Direct Source: Surface Water Midlands Region Point: HEALEYS DRAIN Data Type: Line Name: J JACKSON LTD Easting: 484520 Northing: 408430	Annual Volume (m <sup>3</sup> ): 158000 Max Daily Volume (m <sup>3</sup> ): 6400 Original Application No: NPS/WR/033887 Original Start Date: 16/09/1993 Expiry Date: - Issue No: 102 Version Start Date: 18/05/2020 Version End Date: -
-	1559m SW	Status: Active Licence No: 03/28/81/0026 Details: Spray Irrigation - Direct Direct Source: Surface Water Midlands Region Point: HEALEYS DRAIN Data Type: Point Name: J JACKSON LTD Easting: 484500 Northing: 408430	Annual Volume (m <sup>3</sup> ): 158000 Max Daily Volume (m <sup>3</sup> ): 6400 Original Application No: NPS/WR/033887 Original Start Date: 16/09/1993 Expiry Date: - Issue No: 102 Version Start Date: 18/05/2020 Version End Date: -
-	1613m W	Status: Historical Licence No: 03/28/81/0046 Details: Spray Irrigation - Direct Direct Source: Surface Water Midlands Region Point: INGS DRAIN-BRUMBY COMMON Data Type: Line Name: W S CHAPMAN & SONS Easting: 484610 Northing: 410110	Annual Volume (m <sup>3</sup> ): - Max Daily Volume (m <sup>3</sup> ): - Original Application No: - Original Start Date: - Expiry Date: 31/03/2008 Issue No: 1 Version Start Date: 08/06/2001 Version End Date: -
-	1613m W	Status: Historical Licence No: 03/28/81/0046/1 Details: Spray Irrigation - Direct Direct Source: Surface Water Midlands Region Point: INGS DRAIN-BRUMBY COMMON Data Type: Line Name: W S CHAPMAN & SONS Easting: 484610 Northing: 410110	Annual Volume (m <sup>3</sup> ): 48316 Max Daily Volume (m <sup>3</sup> ): 2500 Original Application No: - Original Start Date: 08/08/2003 Expiry Date: 31/03/2015 Issue No: 1 Version Start Date: 08/08/2003 Version End Date: -



ID	Location	Details	
-	1618m W	Status: Historical Licence No: 03/28/81/0046/1/R01 Details: Spray Irrigation - Direct Direct Source: Surface Water Midlands Region Point: INGS DRAIN-BRUMBY COMMON-E TO F Data Type: Line Name: W S CHAPMAN & SONS LIMITED Easting: 484605 Northing: 410116	Annual Volume (m <sup>3</sup> ): 48316 Max Daily Volume (m <sup>3</sup> ): 2500 Original Application No: - Original Start Date: 01/04/2015 Expiry Date: 31/03/2027 Issue No: 1 Version Start Date: 01/04/2015 Version End Date: -
-	1687m S	Status: Active Licence No: 03/28/81/0028 Details: Spray Irrigation - Direct Direct Source: Surface Water Midlands Region Point: BOTTESFORD MOOR FARM - UNNAMED DRAIN Data Type: Line Name: R J & A E GODFREY Easting: 486200 Northing: 405940	Annual Volume (m <sup>3</sup> ): 74000 Max Daily Volume (m <sup>3</sup> ): 1540 Original Application No: - Original Start Date: 22/09/1993 Expiry Date: - Issue No: 100 Version Start Date: 03/12/2018 Version End Date: -
-	1736m W	Status: Active Licence No: 03/28/81/0025 Details: Spray Irrigation - Direct Direct Source: Surface Water Midlands Region Point: BURREINGHAM - CARR DYKE NORTH (F) Data Type: Point Name: THORNTON Easting: 484340 Northing: 409430	Annual Volume (m <sup>3</sup> ): 24000 Max Daily Volume (m <sup>3</sup> ): 1265 Original Application No: - Original Start Date: 29/01/1993 Expiry Date: - Issue No: 100 Version Start Date: 03/12/2018 Version End Date: -
-	1743m W	Status: Historical Licence No: 03/28/81/0046 Details: Spray Irrigation - Direct Direct Source: Surface Water Midlands Region Point: CARR DYKE NORTH - BRUMBY COMMON Data Type: Line Name: W S CHAPMAN & SONS Easting: 484360 Northing: 409600	Annual Volume (m <sup>3</sup> ): - Max Daily Volume (m <sup>3</sup> ): - Original Application No: - Original Start Date: - Expiry Date: 31/03/2008 Issue No: 1 Version Start Date: 08/06/2001 Version End Date: -
-	1743m W	Status: Historical Licence No: 03/28/81/0046/1 Details: Spray Irrigation - Direct Direct Source: Surface Water Midlands Region Point: CARR DYKE NORTH - BRUMBY COMMON Data Type: Line Name: W S CHAPMAN & SONS Easting: 484360 Northing: 409600	Annual Volume (m <sup>3</sup> ): 48316 Max Daily Volume (m <sup>3</sup> ): 2500 Original Application No: - Original Start Date: 08/08/2003 Expiry Date: 31/03/2015 Issue No: 1 Version Start Date: 08/08/2003 Version End Date: -



ID	Location	Details	
-	1749m W	Status: Historical Licence No: 03/28/81/0046/1/R01 Details: Spray Irrigation - Direct Direct Source: Surface Water Midlands Region Point: CARR DYKE NORTH - BRUMBY COMMON - G TO H Data Type: Line Name: W S CHAPMAN & SONS LIMITED Easting: 484363 Northing: 409605	Annual Volume (m <sup>3</sup> ): 48316 Max Daily Volume (m <sup>3</sup> ): 2500 Original Application No: - Original Start Date: 01/04/2015 Expiry Date: 31/03/2027 Issue No: 1 Version Start Date: 01/04/2015 Version End Date: -
-	1780m W	Status: Active Licence No: 03/28/81/0025 Details: Spray Irrigation - Direct Direct Source: Surface Water Midlands Region Point: BURRINGHAM - CARR DYKE NORTH (D) Data Type: Point Name: THORNTON Easting: 484210 Northing: 408900	Annual Volume (m <sup>3</sup> ): 24000 Max Daily Volume (m <sup>3</sup> ): 1265 Original Application No: - Original Start Date: 29/01/1993 Expiry Date: - Issue No: 100 Version Start Date: 03/12/2018 Version End Date: -
-	1891m W	Status: Active Licence No: 03/28/81/0025 Details: Spray Irrigation - Direct Direct Source: Surface Water Midlands Region Point: BURRINGHAM - CARR DYKE NORTH (E) Data Type: Point Name: THORNTON Easting: 484140 Northing: 409280	Annual Volume (m <sup>3</sup> ): 24000 Max Daily Volume (m <sup>3</sup> ): 1265 Original Application No: - Original Start Date: 29/01/1993 Expiry Date: - Issue No: 100 Version Start Date: 03/12/2018 Version End Date: -
-	1913m W	Status: Active Licence No: 03/28/81/0025 Details: Spray Irrigation - Direct Direct Source: Surface Water Midlands Region Point: BURRINGHAM - CARR DYKE NORTH (C) Data Type: Point Name: THORNTON Easting: 484100 Northing: 408590	Annual Volume (m <sup>3</sup> ): 24000 Max Daily Volume (m <sup>3</sup> ): 1265 Original Application No: - Original Start Date: 29/01/1993 Expiry Date: - Issue No: 100 Version Start Date: 03/12/2018 Version End Date: -
-	1979m SW	Status: Active Licence No: 03/28/81/0025 Details: Spray Irrigation - Direct Direct Source: Surface Water Midlands Region Point: BURRINGHAM - HEALEYS DRAIN (A) Data Type: Point Name: THORNTON Easting: 484070 Northing: 408410	Annual Volume (m <sup>3</sup> ): 24000 Max Daily Volume (m <sup>3</sup> ): 1265 Original Application No: - Original Start Date: 29/01/1993 Expiry Date: - Issue No: 100 Version Start Date: 03/12/2018 Version End Date: -

This data is sourced from the Environment Agency and Natural Resources Wales.



## 5.8 Potable abstractions

Records within 2000m

0

Licensed potable water abstractions for sites extracting more than 20 cubic metres of water a day and includes active and historical records. The data may be for a single abstraction point, a stretch of watercourse or a larger area.

*This data is sourced from the Environment Agency and Natural Resources Wales.*

## 5.9 Source Protection Zones

Records within 500m

0

Source Protection Zones define the sensitivity of an area around a potable abstraction site to contamination.

*This data is sourced from the Environment Agency and Natural Resources Wales.*

## 5.10 Source Protection Zones (confined aquifer)

Records within 500m

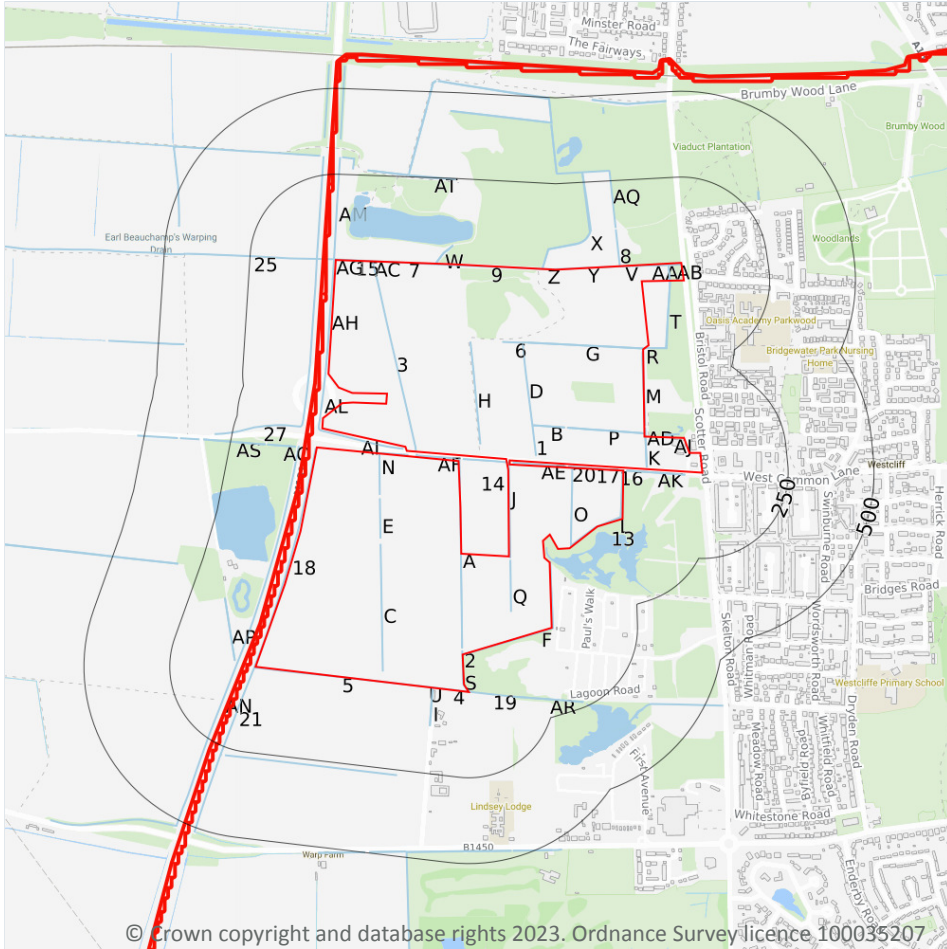
0

Source Protection Zones in the confined aquifer define the sensitivity around a deep groundwater abstraction to contamination. A confined aquifer would normally be protected from contamination by overlying geology and is only considered a sensitive resource if deep excavation/drilling is taking place.

*This data is sourced from the Environment Agency and Natural Resources Wales.*



## 6 Hydrology



- Site Outline
- Search buffers in metres (m)
- Water Network (OS MasterMap)
- Surface water features (wider than 5m)
- Surface water features (narrower than 5m)
- ⋯ WFD River, canal and surface water transfer water bodies
- WFD Lake water bodies
- WFD Transitional and coastal water bodies
- WFD Surface water body catchments boundaries
- WFD Groundwater body boundaries

### 6.1 Water Network (OS MasterMap)

Records within 250m

77

Detailed water network of Great Britain showing the flow and precise central course of every river, stream, lake and canal.

Features are displayed on the Hydrology map on [page 51](#) >

ID	Location	Type of water feature	Ground level	Permanence	Name
1	On site	Inland river not influenced by normal tidal action.	On ground surface	Watercourse contains water year round (in normal circumstances)	-

ID	Location	Type of water feature	Ground level	Permanence	Name
2	On site	Inland river not influenced by normal tidal action.	On ground surface	Watercourse contains water year round (in normal circumstances)	-
3	On site	Inland river not influenced by normal tidal action.	On ground surface	Watercourse contains water year round (in normal circumstances)	Earl Beauchamp's Warping Drain
4	On site	Inland river not influenced by normal tidal action.	On ground surface	Watercourse contains water year round (in normal circumstances)	-
5	On site	Inland river not influenced by normal tidal action.	On ground surface	Watercourse contains water year round (in normal circumstances)	-
6	On site	Inland river not influenced by normal tidal action.	On ground surface	Watercourse contains water year round (in normal circumstances)	-
7	On site	Inland river not influenced by normal tidal action.	On ground surface	Watercourse contains water year round (in normal circumstances)	-
8	On site	Inland river not influenced by normal tidal action.	On ground surface	Watercourse contains water year round (in normal circumstances)	-
9	On site	Inland river not influenced by normal tidal action.	On ground surface	Watercourse contains water year round (in normal circumstances)	-
A	On site	Inland river not influenced by normal tidal action.	On ground surface	Watercourse contains water year round (in normal circumstances)	-
B	On site	Inland river not influenced by normal tidal action.	On ground surface	Watercourse contains water year round (in normal circumstances)	-
C	On site	Inland river not influenced by normal tidal action.	On ground surface	Watercourse contains water year round (in normal circumstances)	-
D	On site	Inland river not influenced by normal tidal action.	On ground surface	Watercourse contains water year round (in normal circumstances)	-
E	On site	Inland river not influenced by normal tidal action.	On ground surface	Watercourse contains water year round (in normal circumstances)	-



ID	Location	Type of water feature	Ground level	Permanence	Name
F	On site	Inland river not influenced by normal tidal action.	On ground surface	Watercourse contains water year round (in normal circumstances)	-
G	On site	Inland river not influenced by normal tidal action.	On ground surface	Watercourse contains water year round (in normal circumstances)	-
H	On site	Inland river not influenced by normal tidal action.	On ground surface	Watercourse contains water year round (in normal circumstances)	-
I	On site	Inland river not influenced by normal tidal action.	On ground surface	Watercourse contains water year round (in normal circumstances)	-
J	On site	Inland river not influenced by normal tidal action.	On ground surface	Watercourse contains water year round (in normal circumstances)	-
K	On site	Inland river not influenced by normal tidal action.	On ground surface	Watercourse contains water year round (in normal circumstances)	-
L	On site	Inland river not influenced by normal tidal action.	On ground surface	Watercourse contains water year round (in normal circumstances)	-
M	On site	Inland river not influenced by normal tidal action.	On ground surface	Watercourse contains water year round (in normal circumstances)	-
N	On site	Inland river not influenced by normal tidal action.	On ground surface	Watercourse contains water year round (in normal circumstances)	-
O	On site	Inland river not influenced by normal tidal action.	On ground surface	Watercourse contains water year round (in normal circumstances)	-
P	On site	Inland river not influenced by normal tidal action.	On ground surface	Watercourse contains water year round (in normal circumstances)	-
Q	On site	Inland river not influenced by normal tidal action.	On ground surface	Watercourse contains water year round (in normal circumstances)	-
R	On site	Inland river not influenced by normal tidal action.	On ground surface	Watercourse contains water year round (in normal circumstances)	-



ID	Location	Type of water feature	Ground level	Permanence	Name
R	On site	Inland river not influenced by normal tidal action.	On ground surface	Watercourse contains water year round (in normal circumstances)	-
S	On site	Inland river not influenced by normal tidal action.	On ground surface	Watercourse contains water year round (in normal circumstances)	-
T	On site	Inland river not influenced by normal tidal action.	On ground surface	Watercourse contains water year round (in normal circumstances)	-
U	On site	Inland river not influenced by normal tidal action.	Underground	Watercourse contains water year round (in normal circumstances)	-
U	On site	Inland river not influenced by normal tidal action.	On ground surface	Watercourse contains water year round (in normal circumstances)	-
V	On site	Inland river not influenced by normal tidal action.	On ground surface	Watercourse contains water year round (in normal circumstances)	-
V	On site	Inland river not influenced by normal tidal action.	On ground surface	Watercourse contains water year round (in normal circumstances)	-
W	On site	Inland river not influenced by normal tidal action.	On ground surface	Watercourse contains water year round (in normal circumstances)	-
X	On site	Inland river not influenced by normal tidal action.	On ground surface	Watercourse contains water year round (in normal circumstances)	-
Y	On site	Inland river not influenced by normal tidal action.	On ground surface	Watercourse contains water year round (in normal circumstances)	-
Z	On site	Inland river not influenced by normal tidal action.	On ground surface	Watercourse contains water year round (in normal circumstances)	-
AA	On site	Inland river not influenced by normal tidal action.	On ground surface	Watercourse contains water year round (in normal circumstances)	-
AB	On site	Inland river not influenced by normal tidal action.	On ground surface	Watercourse contains water year round (in normal circumstances)	-



ID	Location	Type of water feature	Ground level	Permanence	Name
AC	On site	Inland river not influenced by normal tidal action.	On ground surface	Watercourse contains water year round (in normal circumstances)	Earl Beauchamp's Warping Drain
AC	On site	Inland river not influenced by normal tidal action.	On ground surface	Watercourse contains water year round (in normal circumstances)	-
AC	On site	Inland river not influenced by normal tidal action.	Underground	Watercourse contains water year round (in normal circumstances)	-
15	On site	Inland river not influenced by normal tidal action.	On ground surface	Watercourse contains water year round (in normal circumstances)	Earl Beauchamp's Warping Drain
Z	On site	Inland river not influenced by normal tidal action.	Underground	Watercourse contains water year round (in normal circumstances)	-
16	On site	Inland river not influenced by normal tidal action.	Underground	Watercourse contains water year round (in normal circumstances)	-
17	On site	Inland river not influenced by normal tidal action.	On ground surface	Watercourse contains water year round (in normal circumstances)	-
18	1m SW	Inland river not influenced by normal tidal action.	On ground surface	Watercourse contains water year round (in normal circumstances)	-
19	1m S	Inland river not influenced by normal tidal action.	On ground surface	Watercourse contains water year round (in normal circumstances)	-
AD	2m E	Inland river not influenced by normal tidal action.	On ground surface	Watercourse contains water year round (in normal circumstances)	-
20	3m E	Inland river not influenced by normal tidal action.	On ground surface	Watercourse contains water year round (in normal circumstances)	-
AE	3m E	Inland river not influenced by normal tidal action.	On ground surface	Watercourse contains water year round (in normal circumstances)	-
R	4m NE	Inland river not influenced by normal tidal action.	On ground surface	Watercourse contains water year round (in normal circumstances)	-



ID	Location	Type of water feature	Ground level	Permanence	Name
AG	4m NW	Inland river not influenced by normal tidal action.	On ground surface	Watercourse contains water year round (in normal circumstances)	Earl Beauchamp's Warping Drain
AF	4m W	Inland river not influenced by normal tidal action.	On ground surface	Watercourse contains water year round (in normal circumstances)	-
21	5m SW	Inland river not influenced by normal tidal action.	On ground surface	Watercourse contains water year round (in normal circumstances)	-
AH	5m NW	Inland river not influenced by normal tidal action.	On ground surface	Watercourse contains water year round (in normal circumstances)	-
AG	5m NW	Inland river not influenced by normal tidal action.	On ground surface	Watercourse contains water year round (in normal circumstances)	-
AG	5m NW	Inland river not influenced by normal tidal action.	Underground	Watercourse contains water year round (in normal circumstances)	Earl Beauchamp's Warping Drain
AJ	6m E	Inland river not influenced by normal tidal action.	On ground surface	Watercourse contains water year round (in normal circumstances)	-
AI	6m W	Inland river not influenced by normal tidal action.	On ground surface	Watercourse contains water year round (in normal circumstances)	-
AK	7m E	Inland river not influenced by normal tidal action.	On ground surface	Watercourse contains water year round (in normal circumstances)	-
AL	8m NW	Inland river not influenced by normal tidal action.	Underground	Watercourse contains water year round (in normal circumstances)	-
AM	11m NW	Inland river not influenced by normal tidal action.	On ground surface	Watercourse contains water year round (in normal circumstances)	-
AJ	18m E	Inland river not influenced by normal tidal action.	On ground surface	Watercourse contains water year round (in normal circumstances)	-
AN	51m SW	Inland river not influenced by normal tidal action.	On ground surface	Watercourse contains water year round (in normal circumstances)	-



ID	Location	Type of water feature	Ground level	Permanence	Name
AH	54m NW	Inland river not influenced by normal tidal action.	On ground surface	Watercourse contains water year round (in normal circumstances)	-
AL	55m NW	Inland river not influenced by normal tidal action.	Underground	Watercourse contains water year round (in normal circumstances)	-
AM	55m NW	Inland river not influenced by normal tidal action.	On ground surface	Watercourse contains water year round (in normal circumstances)	-
25	55m NW	Inland river not influenced by normal tidal action.	On ground surface	Watercourse contains water year round (in normal circumstances)	Earl Beauchamp's Warping Drain
27	56m W	Inland river not influenced by normal tidal action.	On ground surface	Watercourse contains water year round (in normal circumstances)	-
AO	60m W	Inland river not influenced by normal tidal action.	On ground surface	Watercourse contains water year round (in normal circumstances)	-
AP	63m SW	Inland river not influenced by normal tidal action.	On ground surface	Watercourse contains water year round (in normal circumstances)	-
AQ	112m NE	Inland river not influenced by normal tidal action.	On ground surface	Watercourse contains water year round (in normal circumstances)	-
AR	129m S	Inland river not influenced by normal tidal action.	On ground surface	Watercourse contains water year round (in normal circumstances)	-
AS	148m W	Inland river not influenced by normal tidal action.	On ground surface	Watercourse contains water year round (in normal circumstances)	-
AT	247m N	Inland river not influenced by normal tidal action.	On ground surface	Watercourse contains water year round (in normal circumstances)	-

*This data is sourced from the Ordnance Survey.*



## 6.2 Surface water features

Records within 250m

24

Covering rivers, streams and lakes (some overlap with OS MasterMap Water Network data in previous section) but additionally covers smaller features such as ponds. Rivers and streams narrower than 5m are represented as a single line. Lakes, ponds and rivers or streams wider than 5m are represented as polygons.

Features are displayed on the Hydrology map on [page 51 >](#)

*This data is sourced from the Ordnance Survey.*

## 6.3 WFD Surface water body catchments

Records on site

1

The Water Framework Directive is an EU-led framework for the protection of inland surface waters, estuaries, coastal waters and groundwater through river basin-level management planning. In terms of surface water, these basins are broken down into smaller units known as management, operational and water body catchments.

Features are displayed on the Hydrology map on [page 51 >](#)

ID	Location	Type	Water body catchment	Water body ID	Operational catchment	Management catchment
13	On site	River	Bottesford Beck Catchment (trib of Trent)	GB104028064290	Trent and Trib	Trent Lower and Erewash

*This data is sourced from the Environment Agency and Natural Resources Wales.*

## 6.4 WFD Surface water bodies

Records identified

1

Surface water bodies under the Directive may be rivers, lakes, estuary or coastal. To achieve the purpose of the Directive, environmental objectives have been set and are reported on for each water body. The progress towards delivery of the objectives is then reported on by the relevant competent authorities at the end of each six-year cycle. The river water body directly associated with the catchment listed in the previous section is detailed below, along with any lake, canal, coastal or artificial water body within 250m of the site. Click on the water body ID in the table to visit the EA Catchment Explorer to find out more about each water body listed.

Features are displayed on the Hydrology map on [page 51 >](#)



ID	Location	Type	Name	Water body ID	Overall rating	Chemical rating	Ecological rating	Year
-	2869m S	River	Bottesford Beck Catchment (trib of Trent)	<a href="#">GB104028064290</a> ↗	Moderate	Fail	Moderate	2019

*This data is sourced from the Environment Agency and Natural Resources Wales.*

## 6.5 WFD Groundwater bodies

<b>Records on site</b>	<b>1</b>
------------------------	----------

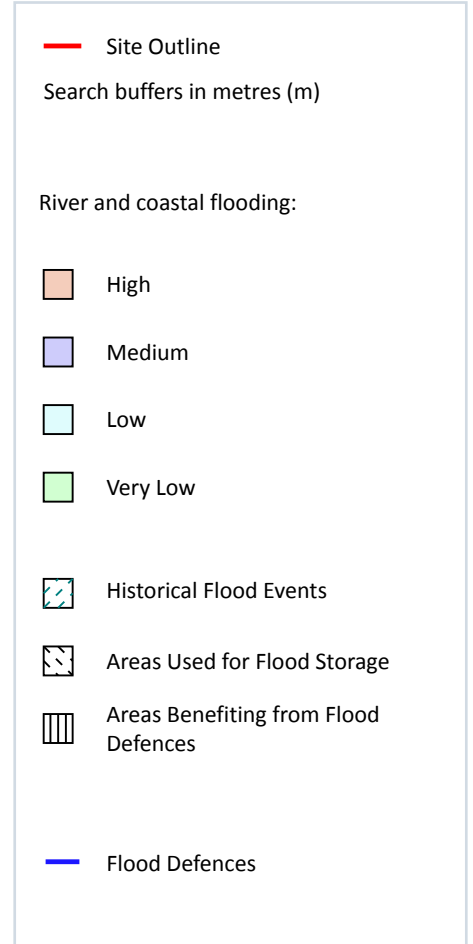
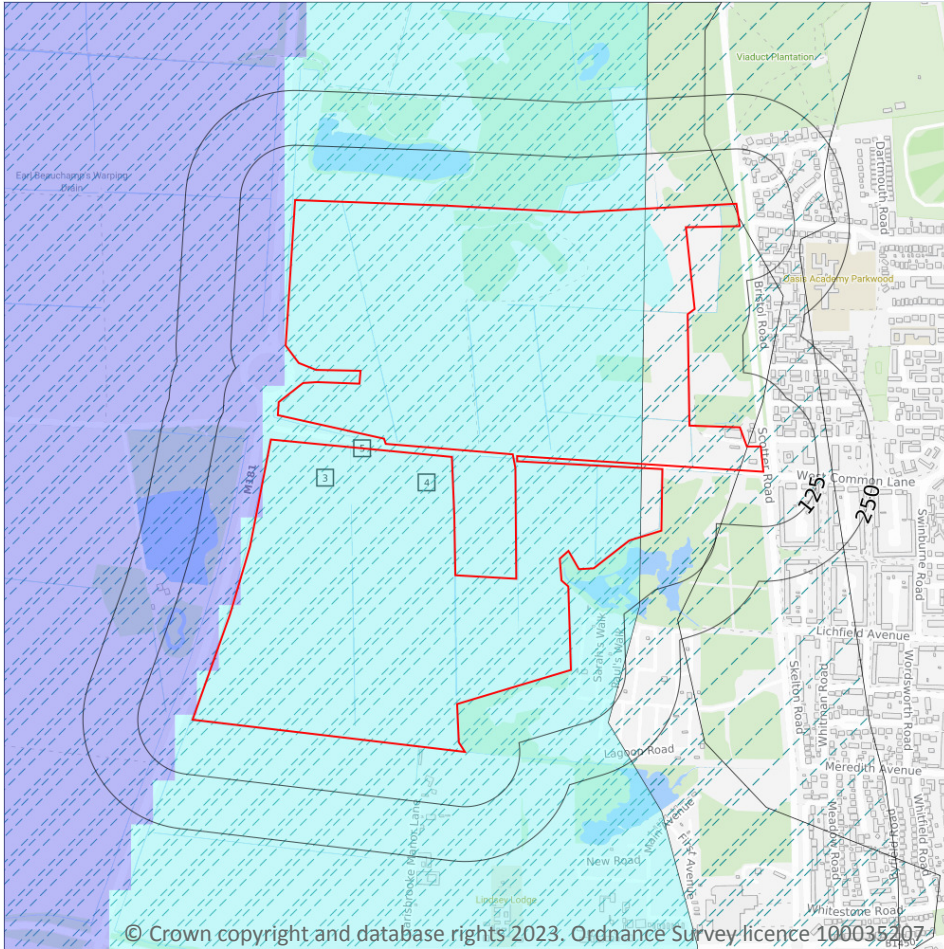
Groundwater bodies are also covered by the Directive and the same regime of objectives and reporting detailed in the previous section is in place. Click on the water body ID in the table to visit the EA Catchment Explorer to find out more about each groundwater body listed.

Features are displayed on the Hydrology map on [page 51](#) >

ID	Location	Name	Water body ID	Overall rating	Chemical rating	Quantitative	Year
14	On site	Lower Trent Erewash - Secondary Combined	<a href="#">GB40402G990300</a> ↗	Good	Good	Good	2019

*This data is sourced from the Environment Agency and Natural Resources Wales.*

## 7 River and coastal flooding



### 7.1 Risk of flooding from rivers and the sea

Records within 50m

2

The chance of flooding from rivers and/or the sea in any given year, based on cells of 50m within the Risk of Flooding from Rivers and Sea (RoFRaS)/Flood Risk Assessment Wales (FRAW) models. Each cell is allocated one of four flood risk categories, taking into account flood defences and their condition. The risk categories for RoFRaS for rivers and the sea and FRAW for rivers are; Very low (less than 1 in 1000 chance in any given year), Low (less than 1 in 100 but greater than or equal to 1 in 1000 chance), Medium (less than 1 in 30 but greater than or equal to 1 in 100 chance) or High (greater than or equal to 1 in 30 chance). The risk categories for FRAW for the sea are; Very low (less than 1 in 1000 chance in any given year), Low (less than 1 in 200 but greater than or equal to 1 in 1000 chance), Medium (less than 1 in 30 but greater than or equal to 1 in 200 chance) or High (greater than or equal to 1 in 30 chance).

Features are displayed on the River and coastal flooding map on [page 60 >](#)

Distance	Flood risk category
<b>On site</b>	<b>Medium</b>
0 - 50m	Medium

*This data is sourced from the Environment Agency and Natural Resources Wales.*

## 7.2 Historical Flood Events

<b>Records within 250m</b>	<b>3</b>
----------------------------	----------

Records of historic flooding from rivers, the sea, groundwater and surface water. Records began in 1946 when predecessor bodies started collecting detailed information about flooding incidents, although limited details may be included on flooding incidents prior to this date. Takes into account the presence of defences, structures, and other infrastructure where they existed at the time of flooding, and includes flood extents that may have been affected by overtopping, breaches or blockages.

Features are displayed on the River and coastal flooding map on [page 60 >](#)

ID	Location	Event name	Date of flood	Flood source	Flood cause	Type of flood
3	On site	Tidal Trent 1947	1947-03-01 1947-03-01	Unknown	Channel capacity exceeded (no raised defences)	Fluvial
4	On site	Tidal Trent March 1947 Dnl	1947-03-01 1947-03-31	Main river	Channel capacity exceeded (no raised defences)	Tidal
5	On site	Tidal Trent March 1947	1947-03-01 1947-03-31	Main river	Channel capacity exceeded (no raised defences)	Tidal

*This data is sourced from the Environment Agency and Natural Resources Wales.*

## 7.3 Flood Defences

<b>Records within 250m</b>	<b>0</b>
----------------------------	----------

Records of flood defences owned, managed or inspected by the Environment Agency and Natural Resources Wales. Flood defences can be structures, buildings or parts of buildings. Typically these are earth banks, stone and concrete walls, or sheet-piling that is used to prevent or control the extent of flooding.

*This data is sourced from the Environment Agency and Natural Resources Wales.*

## 7.4 Areas Benefiting from Flood Defences

Records within 250m

0

Areas that would benefit from the presence of flood defences in a 1 in 100 (1%) chance of flooding each year from rivers or 1 in 200 (0.5%) chance of flooding each year from the sea.

*This data is sourced from the Environment Agency and Natural Resources Wales.*

## 7.5 Flood Storage Areas

Records within 250m

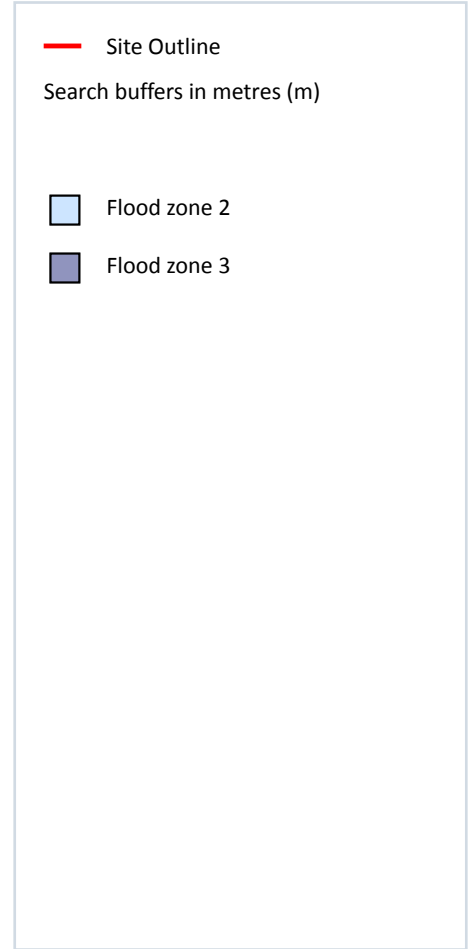
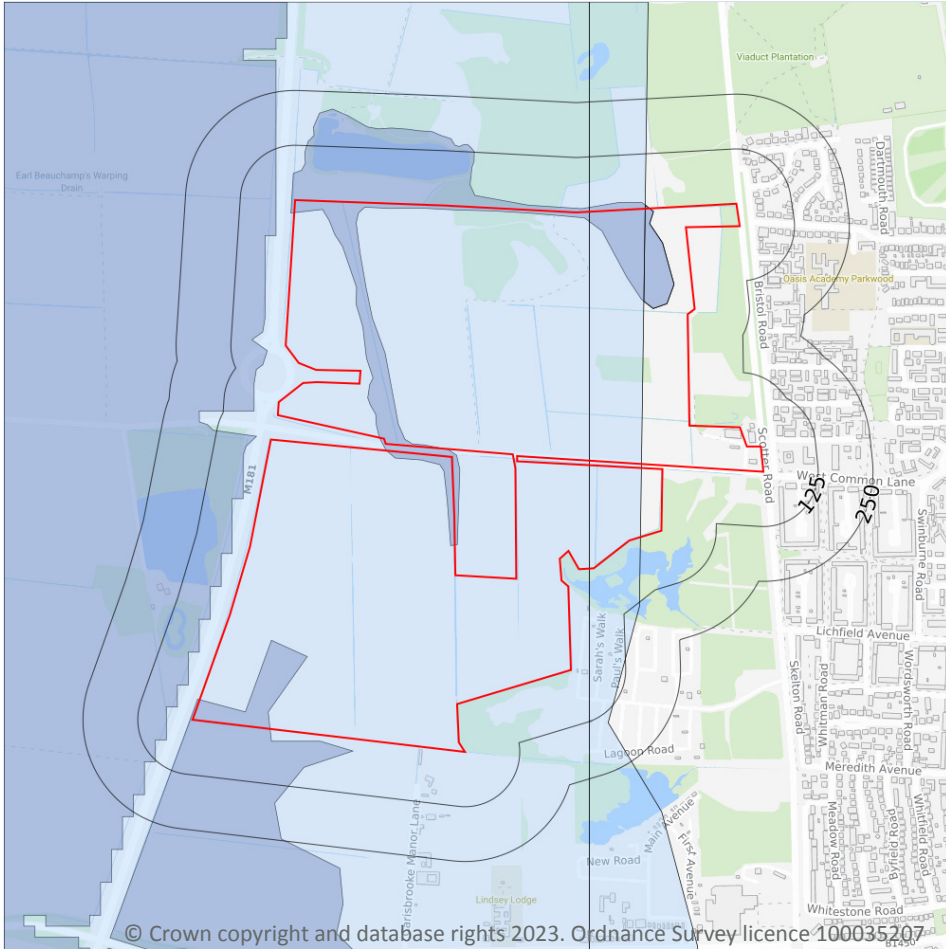
0

Areas that act as a balancing reservoir, storage basin or balancing pond to attenuate an incoming flood peak to a flow level that can be accepted by the downstream channel or to delay the timing of a flood peak so that its volume is discharged over a longer period.

*This data is sourced from the Environment Agency and Natural Resources Wales.*



## River and coastal flooding - Flood Zones



### 7.6 Flood Zone 2

Records within 50m

1

Areas of land at risk of flooding, when the presence of flood defences are ignored. Covering land between Flood Zone 3 (see next section) and the extent of the flooding from rivers or the sea with a 1 in 1000 (0.1%) chance of flooding each year.

Features are displayed on the River and coastal flooding map on [page 60](#) >

Location	Type
On site	Zone 2 - (Fluvial /Tidal Models)

*This data is sourced from the Environment Agency and Natural Resources Wales.*

## 7.7 Flood Zone 3

Records within 50m

1

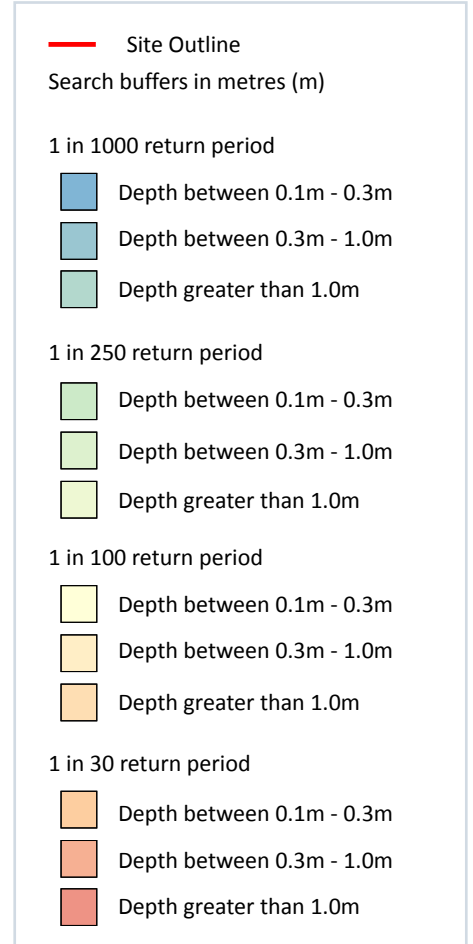
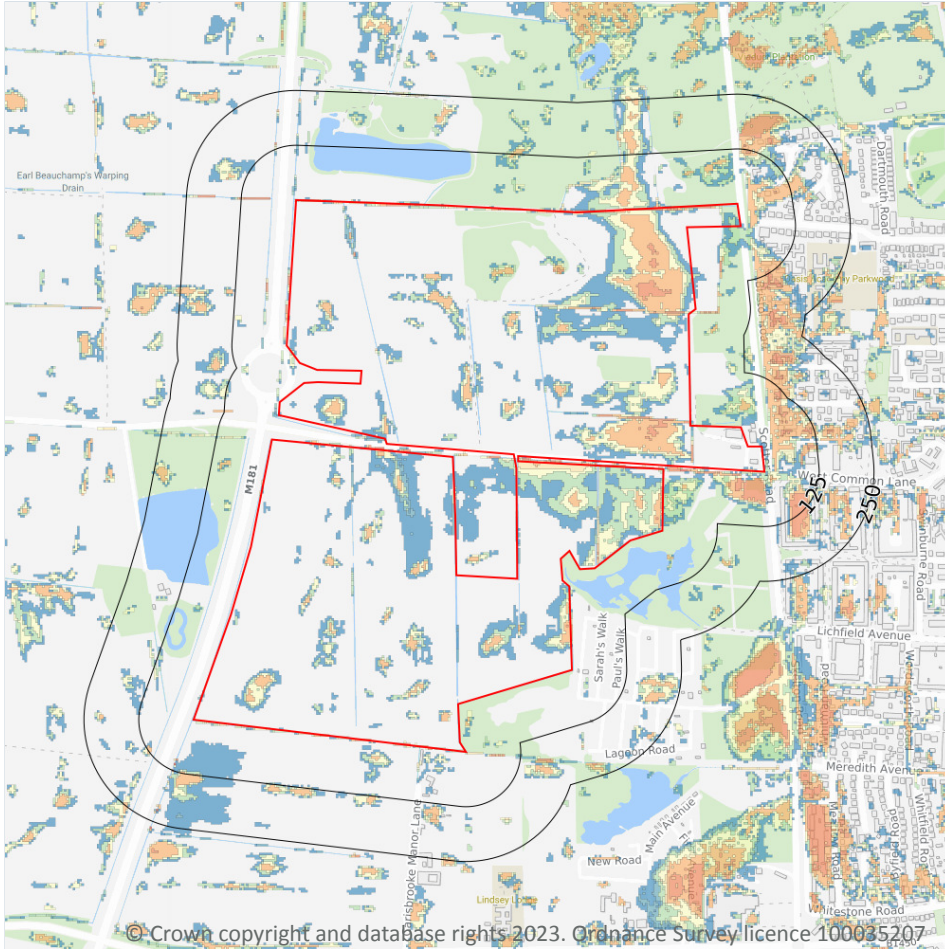
Areas of land at risk of flooding, when the presence of flood defences are ignored. Covering land with a 1 in 100 (1%) or greater chance of flooding each year from rivers or a 1 in 200 (0.5%) or greater chance of flooding each year from the sea.

Features are displayed on the River and coastal flooding map on [page 60](#) >

Location	Type
On site	Zone 3 - (Fluvial /Tidal Models)

*This data is sourced from the Environment Agency and Natural Resources Wales.*

## 8 Surface water flooding



### 8.1 Surface water flooding

Highest risk on site

**1 in 30 year, 0.3m - 1.0m**

Highest risk within 50m

**1 in 30 year, Greater than 1.0m**

Ambiental Risk Analytics surface water (pluvial) FloodMap identifies areas likely to flood as a result of extreme rainfall events, i.e. land naturally vulnerable to surface water ponding or flooding. This data set was produced by simulating 1 in 30 year, 1 in 100 year, 1 in 250 year and 1 in 1,000 year rainfall events. Modern urban drainage systems are typically built to cope with rainfall events between 1 in 20 and 1 in 30 years, though some older ones may flood in a 1 in 5 year rainfall event.

Features are displayed on the Surface water flooding map on [page 65 >](#)

The data shown on the map and in the table above shows the highest likelihood of flood events happening at the site. Lower likelihood events may have greater flood depths and hence a greater potential impact on a site.

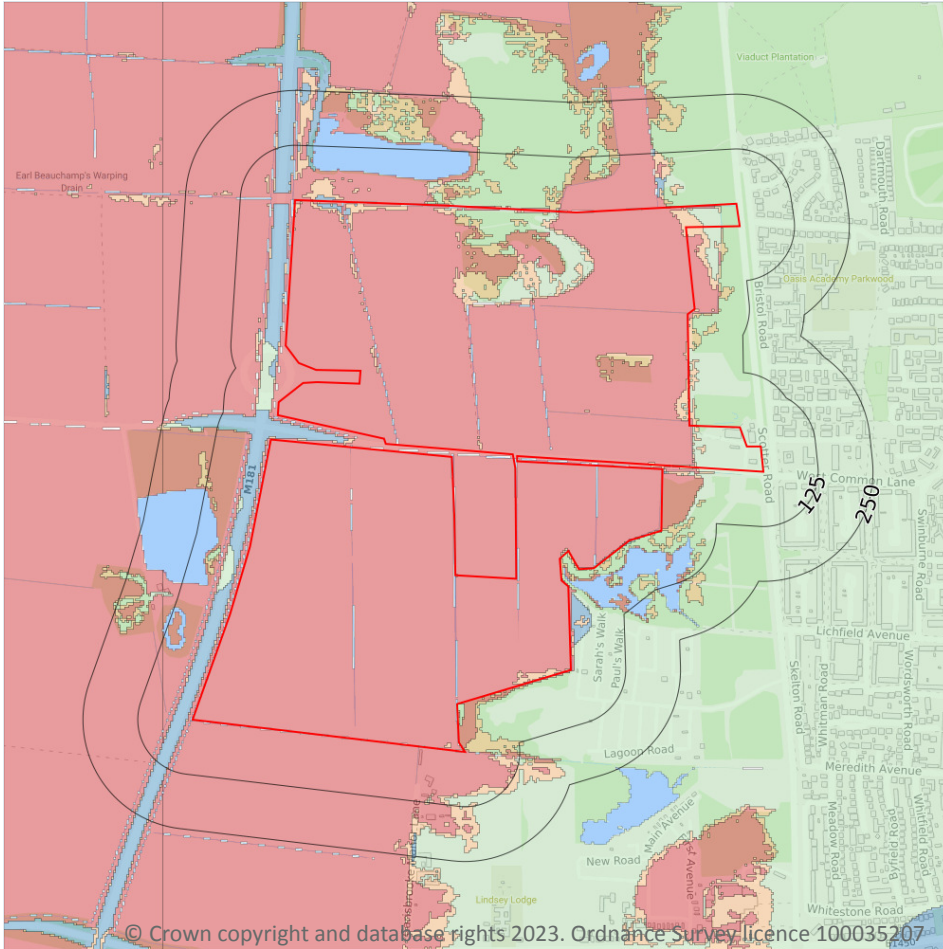
The table below shows the maximum flood depths for a range of return periods for the site.

Return period	Maximum modelled depth
1 in 1000 year	Greater than 1.0m
1 in 250 year	Greater than 1.0m
1 in 100 year	Greater than 1.0m
1 in 30 year	Between 0.3m and 1.0m

*This data is sourced from Ambiental Risk Analytics.*



## 9 Groundwater flooding



### 9.1 Groundwater flooding

Highest risk on site

High

Highest risk within 50m

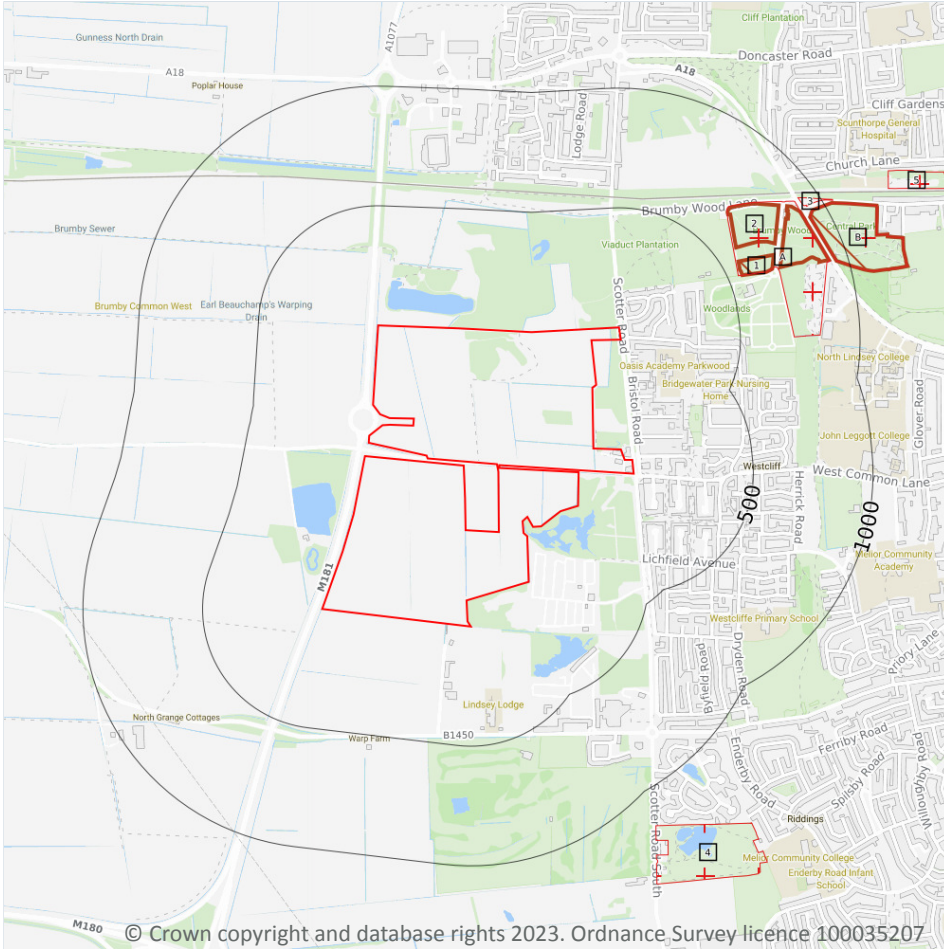
High

Groundwater flooding is caused by unusually high groundwater levels. It occurs when the water table rises above the ground surface or within underground structures such as basements or cellars. Groundwater flooding tends to exhibit a longer duration than surface water flooding, possibly lasting for weeks or months, and as a result it can cause significant damage to property. This risk assessment is based on a 1 in 100 year return period and a 5m Digital Terrain Model (DTM).

Features are displayed on the Groundwater flooding map on [page 67](#) >

*This data is sourced from Ambiantal Risk Analytics.*

## 10 Environmental designations



- Site Outline
- Search buffers in metres (m)
- Sites of Special Scientific Interest (SSSI)
- × Conserved wetland sites (Ramsar sites)
- + Special Areas of Conservation (SAC)
- + Local Nature Reserves (LNR)
- ▤ Designated Ancient Woodland

### 10.1 Sites of Special Scientific Interest (SSSI)

Records within 2000m

0

Sites providing statutory protection for the best examples of UK flora, fauna, or geological or physiographical features. Originally notified under the National Parks and Access to the Countryside Act 1949, SSSIs were re-notified under the Wildlife and Countryside Act 1981. Improved provisions for the protection and management of SSSIs were introduced by the Countryside and Rights of Way Act 2000 (in England and Wales) and (in Scotland) by the Nature Conservation (Scotland) Act 2004 and the Wildlife and Natural Environment (Scotland) Act 2010.

*This data is sourced from Natural England, Natural Resources Wales and Scottish Natural Heritage.*

## 10.2 Conserved wetland sites (Ramsar sites)

Records within 2000m

0

Ramsar sites are designated under the Convention on Wetlands of International Importance, agreed in Ramsar, Iran, in 1971. They cover all aspects of wetland conservation and wise use, recognizing wetlands as ecosystems that are extremely important for biodiversity conservation in general and for the well-being of human communities. These sites cover a broad definition of wetland; marsh, fen, peatland or water, whether natural or artificial, permanent or temporary, with water that is static or flowing, fresh, brackish or salt, and even some marine areas.

*This data is sourced from Natural England, Natural Resources Wales and Scottish Natural Heritage.*

## 10.3 Special Areas of Conservation (SAC)

Records within 2000m

0

Areas which have been identified as best representing the range and variety within the European Union of habitats and (non-bird) species listed on Annexes I and II to the Directive. SACs are designated under the EC Habitats Directive.

*This data is sourced from Natural England, Natural Resources Wales and Scottish Natural Heritage.*

## 10.4 Special Protection Areas (SPA)

Records within 2000m

0

Sites classified by the UK Government under the EC Birds Directive, SPAs are areas of the most important habitat for rare (listed on Annex I to the Directive) and migratory birds within the European Union.

*This data is sourced from Natural England, Natural Resources Wales and Scottish Natural Heritage.*

## 10.5 National Nature Reserves (NNR)

Records within 2000m

0

Sites containing examples of some of the most important natural and semi-natural terrestrial and coastal ecosystems in Great Britain. They are managed to conserve their habitats, provide special opportunities for scientific study or to provide public recreation compatible with natural heritage interests.

*This data is sourced from Natural England, Natural Resources Wales and Scottish Natural Heritage.*



## 10.6 Local Nature Reserves (LNR)

Records within 2000m

5

Sites managed for nature conservation, and to provide opportunities for research and education, or simply enjoying and having contact with nature. They are declared by local authorities under the National Parks and Access to the Countryside Act 1949 after consultation with the relevant statutory nature conservation agency.

Features are displayed on the Environmental designations map on [page 68 >](#)

ID	Location	Name	Data source
A	544m NE	Brumby Wood	Natural England
B	922m NE	Brumby Wood	Natural England
3	923m NE	Brumby Wood	Natural England
4	1136m SE	Silica Lodge	Natural England
5	1266m NE	Frodingham	Natural England

*This data is sourced from Natural England, Natural Resources Wales and Scottish Natural Heritage.*

## 10.7 Designated Ancient Woodland

Records within 2000m

4

Ancient woodlands are classified as areas which have been wooded continuously since at least 1600 AD. This includes semi-natural woodland and plantations on ancient woodland sites. 'Wooded continuously' does not mean there is or has previously been continuous tree cover across the whole site, and not all trees within the woodland have to be old.

Features are displayed on the Environmental designations map on [page 68 >](#)

ID	Location	Name	Woodland Type
1	559m NE	Brumby Wood	Ancient & Semi-Natural Woodland
2	592m NE	Brumby Wood	Ancient & Semi-Natural Woodland
A	719m NE	Brumby Wood	Ancient & Semi-Natural Woodland
B	922m NE	Brumby Wood	Ancient & Semi-Natural Woodland

*This data is sourced from Natural England, Natural Resources Wales and Scottish Natural Heritage.*



## 10.8 Biosphere Reserves

Records within 2000m

0

Biosphere Reserves are internationally recognised by UNESCO as sites of excellence to balance conservation and socioeconomic development between nature and people. They are recognised under the Man and the Biosphere (MAB) Programme with the aim of promoting sustainable development founded on the work of the local community.

*This data is sourced from Natural England, Natural Resources Wales and Scottish Natural Heritage.*

## 10.9 Forest Parks

Records within 2000m

0

These are areas managed by the Forestry Commission designated on the basis of recreational, conservation or scenic interest.

*This data is sourced from the Forestry Commission.*

## 10.10 Marine Conservation Zones

Records within 2000m

0

A type of marine nature reserve in UK waters established under the Marine and Coastal Access Act (2009). They are designated with the aim to protect nationally important, rare or threatened habitats and species.

*This data is sourced from Natural England, Natural Resources Wales and Scottish Natural Heritage.*

## 10.11 Green Belt

Records within 2000m

0

Areas designated to prevent urban sprawl by keeping land permanently open.

*This data is sourced from the Ministry of Housing, Communities and Local Government.*

## 10.12 Proposed Ramsar sites

Records within 2000m

0

Ramsar sites are areas listed as a Wetland of International Importance under the Convention on Wetlands of International Importance especially as Waterfowl Habitat (the Ramsar Convention) 1971. The sites here supplied have a status of 'Proposed' having been identified for potential adoption under the framework.

*This data is sourced from Natural England.*



### 10.13 Possible Special Areas of Conservation (pSAC)

Records within 2000m

0

Special Areas of Conservation are areas which have been identified as best representing the range and variety within the European Union of habitats and (non-bird) species listed on Annexes I and II to the Directive. SACs are designated under the EC Habitats Directive. Those sites supplied here are those with a status of 'Possible' having been identified for potential adoption under the framework.

*This data is sourced from Natural England and Natural Resources Wales.*

### 10.14 Potential Special Protection Areas (pSPA)

Records within 2000m

0

Special Protection Areas (SPAs) are areas designated (or 'classified') under the European Union Wild Birds Directive for the protection of nationally and internationally important populations of wild birds. Those sites supplied here are those with a status of 'Potential' having been identified for potential adoption under the framework.

*This data is sourced from Natural England.*

### 10.15 Nitrate Sensitive Areas

Records within 2000m

0

Areas where nitrate concentrations in drinking water sources exceeded or was at risk of exceeding the limit of 50 mg/l set by the 1980 EC Drinking Water Directive. Voluntary agricultural measures as a means of reducing the levels of nitrate were introduced by DEFRA as MAFF, with payments being made to farmers who complied. The scheme was started as a pilot in 1990 in ten areas, later implemented within 32 areas. The scheme was closed to further new entrants in 1998, although existing agreements continued for their full term. All Nitrate Sensitive Areas fell within the areas designated as Nitrate Vulnerable Zones (NVZs) in 1996 under the EC Nitrate Directive (91/676/EEC).

*This data is sourced from Natural England.*

### 10.16 Nitrate Vulnerable Zones

Records within 2000m

3

Areas at risk from agricultural nitrate pollution designated under the EC Nitrate Directive (91/676/EEC). These are areas of land that drain into waters polluted by nitrates. Farmers operating within these areas have to follow mandatory rules to tackle nitrate loss from agriculture.

Location	Name	Type	NVZ ID	Status
On site	Bottesford Beck Catchment (trib of R Trent) NVZ	Surface Water	348	Existing

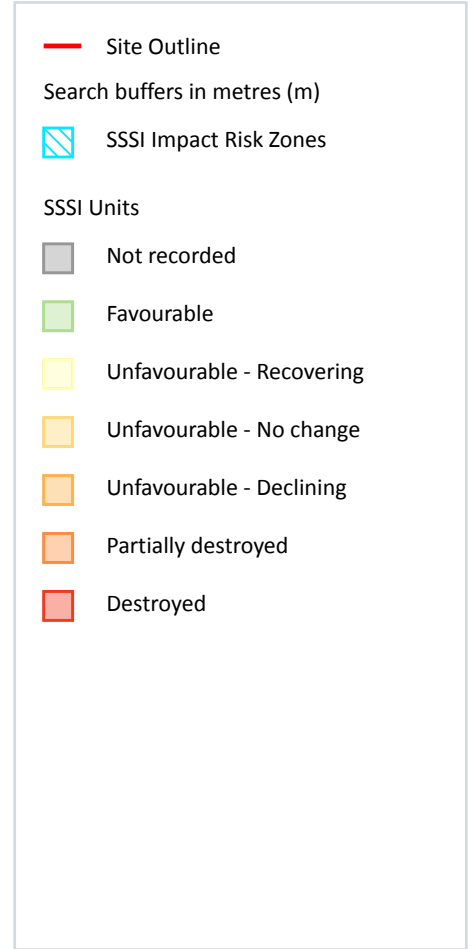
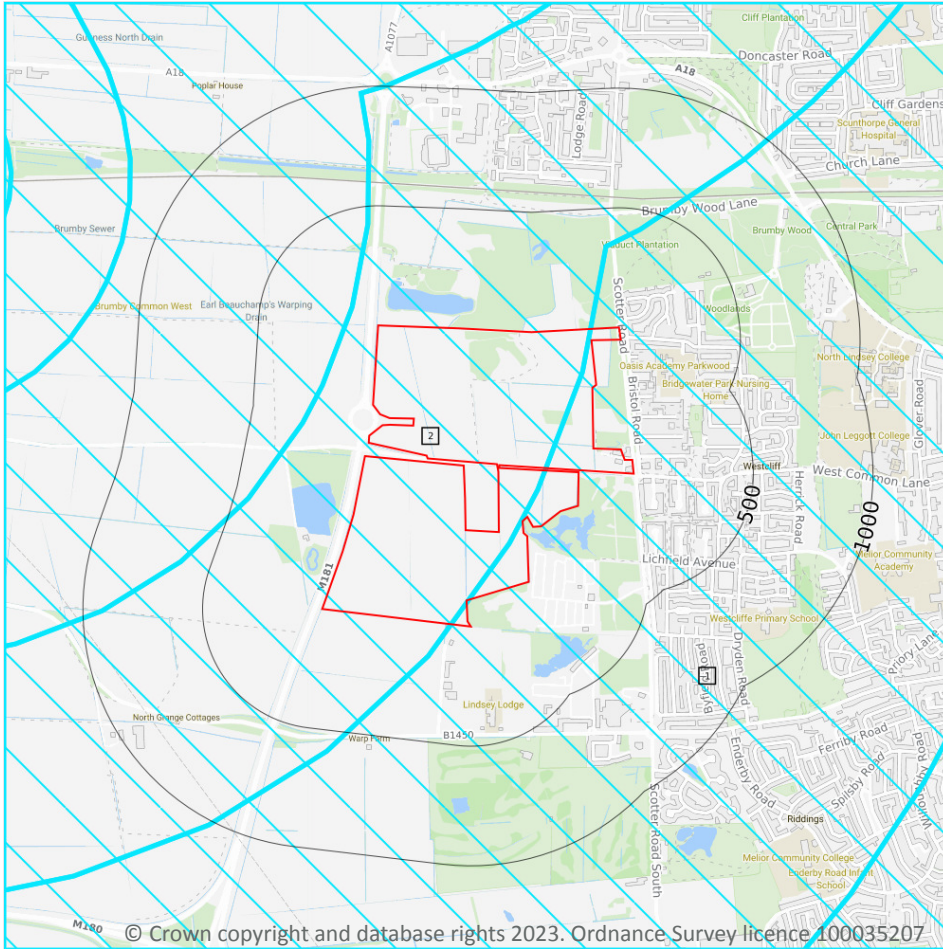


Location	Name	Type	NVZ ID	Status
<b>On site</b>	<b>BURTON STATHER DRAIN NVZ</b>	<b>Surface Water</b>	<b>653</b>	<b>Existing</b>
1898m W	BURTON STATHER DRAIN NVZ	Surface Water	653	Existing

*This data is sourced from Natural England and Natural Resources Wales.*



## SSSI Impact Zones and Units



### 10.17 SSSI Impact Risk Zones

Records on site

2

Developed to allow rapid initial assessment of the potential risks to SSSIs posed by development proposals. They define zones around each SSSI which reflect the particular sensitivities of the features for which it is notified and indicate the types of development proposal which could potentially have adverse impacts.

Features are displayed on the SSSI Impact Zones and Units map on [page 74](#) >

ID	Location	Type of developments requiring consultation
1	On site	<p>Infrastructure - Pipelines and underground cables, pylons and overhead cables. Any transport proposal including road, rail and by water (excluding routine maintenance). Airports, helipads and other aviation proposals.</p> <p>Wind and Solar - Solar schemes with footprint &gt; 0.5ha, all wind turbines.</p> <p>Minerals, Oil and Gas - Planning applications for quarries: new proposals or extensions, outside or extending outside existing settlements/urban areas affecting greenspace, farmland or semi natural habitats. Oil &amp; gas exploration/extraction.</p> <p>Rural non-residential - Large non residential developments outside existing settlements/urban areas where footprint exceeds 1ha.</p> <p>Rural residential - Any residential development of 50 or more houses outside existing settlements/urban areas.</p> <p>Air pollution - Any industrial/agricultural development that could cause AIR POLLUTION (incl: industrial processes, livestock &amp; poultry units with floorspace &gt; 500m<sup>2</sup>, slurry lagoons &amp; digestate stores &gt; 750m<sup>2</sup>, manure stores &gt; 3500t).</p> <p>Combustion - General combustion processes &gt;50MW energy input. Incl: energy from waste incineration, other incineration, landfill gas generation plant, pyrolysis/gasification, anaerobic digestion, sewage treatment works, other incineration/ combustion.</p> <p>Waste - Landfill. Incl: inert landfill, non-hazardous landfill, hazardous landfill.</p> <p>Discharges - Any discharge of water or liquid waste of more than 20m<sup>3</sup>/day to ground (ie to seep away) or to surface water, such as a beck or stream.</p>
2	On site	<p>Infrastructure - Pipelines and underground cables, pylons and overhead cables. Any transport proposal including road, rail and by water (excluding routine maintenance). Airports, helipads and other aviation proposals.</p> <p>Wind and Solar - Solar schemes with footprint &gt; 0.5ha, all wind turbines.</p> <p>Minerals, Oil and Gas - Planning applications for quarries, including: new proposals, Review of Minerals Permissions (ROMP), extensions, variations to conditions etc. Oil &amp; gas exploration/extraction.</p> <p>Rural non-residential - Large non residential developments outside existing settlements/urban areas where footprint exceeds 1ha.</p> <p>Rural residential - Any residential development of 50 or more houses outside existing settlements/urban areas.</p> <p>Air pollution - Any industrial/agricultural development that could cause AIR POLLUTION (incl: industrial processes, livestock &amp; poultry units with floorspace &gt; 500m<sup>2</sup>, slurry lagoons &amp; digestate stores &gt; 750m<sup>2</sup>, manure stores &gt; 3500t).</p> <p>Combustion - General combustion processes &gt;50MW energy input. Incl: energy from waste incineration, other incineration, landfill gas generation plant, pyrolysis/gasification, anaerobic digestion, sewage treatment works, other incineration/ combustion.</p> <p>Waste - Landfill. Incl: inert landfill, non-hazardous landfill, hazardous landfill.</p> <p>Discharges - Any discharge of water or liquid waste of more than 5m<sup>3</sup>/day to ground (ie to seep away) or to surface water, such as a beck or stream.</p>

*This data is sourced from Natural England.*



## 10.18 SSSI Units

Records within 2000m

0

Divisions of SSSIs used to record management and condition details. Units are the smallest areas for which Natural England gives a condition assessment, however, the size of units varies greatly depending on the types of management and the conservation interest.

*This data is sourced from Natural England and Natural Resources Wales.*



## 11 Visual and cultural designations

### 11.1 World Heritage Sites

Records within 250m

0

Sites designated for their globally important cultural or natural interest requiring appropriate management and protection measures. World Heritage Sites are designated to meet the UK's commitments under the World Heritage Convention.

*This data is sourced from Historic England, Cadw and Historic Environment Scotland.*

### 11.2 Area of Outstanding Natural Beauty

Records within 250m

0

Areas of Outstanding Natural Beauty (AONB) are conservation areas, chosen because they represent 18% of the finest countryside. Each AONB has been designated for special attention because of the quality of their flora, fauna, historical and cultural associations, and/or scenic views. The National Parks and Access to the Countryside Act of 1949 created AONBs and the Countryside and Rights of Way Act, 2000 added further regulation and protection. There are likely to be restrictions to some developments within these areas.

*This data is sourced from Natural England, Natural Resources Wales and Scottish Natural Heritage.*

### 11.3 National Parks

Records within 250m

0

In England and Wales, the purpose of National Parks is to conserve and enhance landscapes within the countryside whilst promoting public enjoyment of them and having regard for the social and economic well-being of those living within them. In Scotland National Parks have the additional purpose of promoting the sustainable use of the natural resources of the area and the sustainable social and economic development of its communities. The National Parks and Access to the Countryside Act 1949 established the National Park designation in England and Wales, and The National Parks (Scotland) Act 2000 in Scotland.

*This data is sourced from Natural England, Natural Resources Wales and the Scottish Government.*

### 11.4 Listed Buildings

Records within 250m

0

Buildings listed for their special architectural or historical interest. Building control in the form of 'listed building consent' is required in order to make any changes to that building which might affect its special interest. Listed buildings are graded to indicate their relative importance, however building controls apply to all buildings equally, irrespective of their grade, and apply to the interior and exterior of the building in its entirety, together with any curtilage structures.



*This data is sourced from Historic England, Cadw and Historic Environment Scotland.*

## 11.5 Conservation Areas

**Records within 250m**

**0**

Local planning authorities are obliged to designate as conservation areas any parts of their own area that are of special architectural or historic interest, the character and appearance of which it is desirable to preserve or enhance. Designation of a conservation area gives broader protection than the listing of individual buildings. All the features within the area, listed or otherwise, are recognised as part of its character. Conservation area designation is the means of recognising the importance of all factors and of ensuring that planning decisions address the quality of the landscape in its broadest sense.

*This data is sourced from Historic England, Cadw and Historic Environment Scotland.*

## 11.6 Scheduled Ancient Monuments

**Records within 250m**

**0**

A scheduled monument is an historic building or site that is included in the Schedule of Monuments kept by the Secretary of State for Digital, Culture, Media and Sport. The regime is set out in the Ancient Monuments and Archaeological Areas Act 1979. The Schedule of Monuments has c.20,000 entries and includes sites such as Roman remains, burial mounds, castles, bridges, earthworks, the remains of deserted villages and industrial sites. Monuments are not graded, but all are, by definition, considered to be of national importance.

*This data is sourced from Historic England, Cadw and Historic Environment Scotland.*

## 11.7 Registered Parks and Gardens

**Records within 250m**

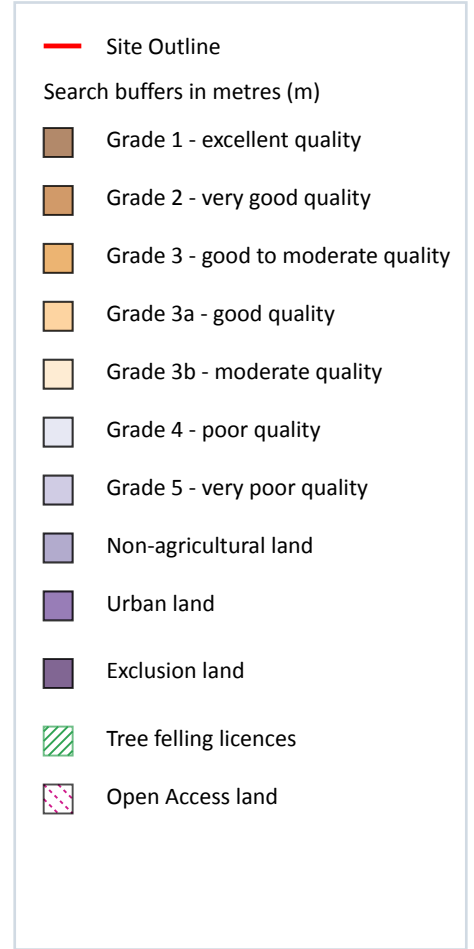
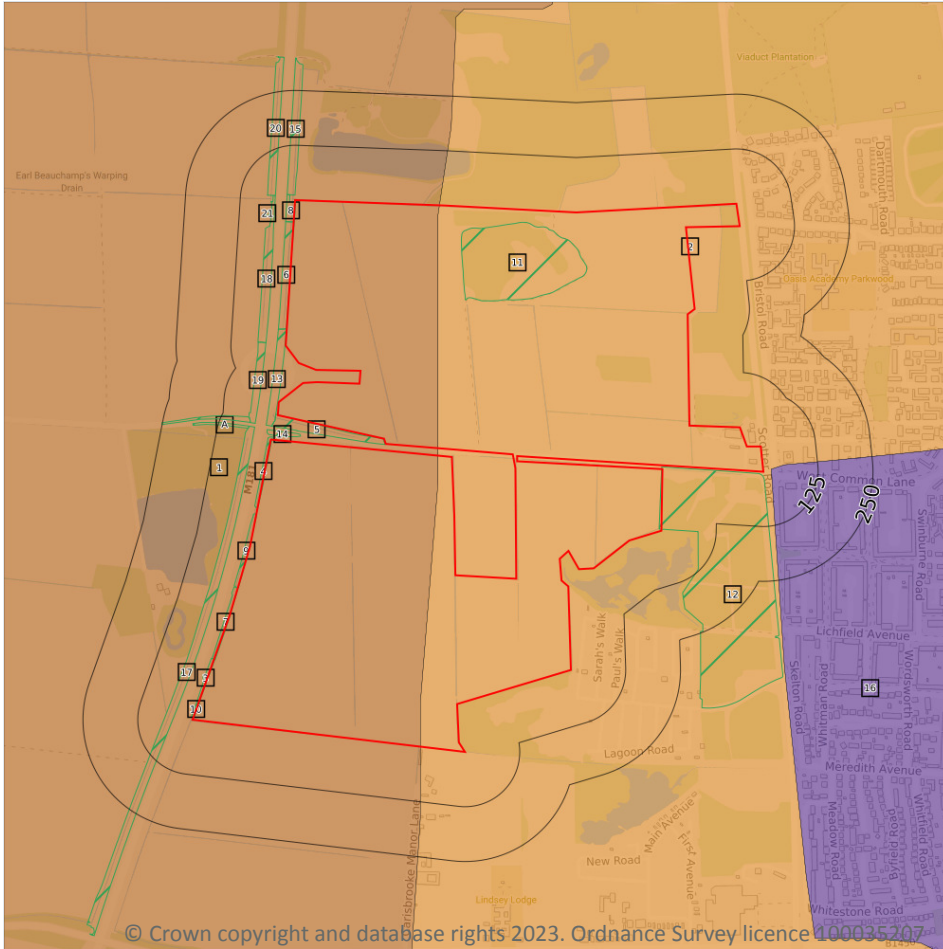
**0**

Parks and gardens assessed to be of particular interest and of special historic interest. The emphasis being on 'designed' landscapes, rather than on planting or botanical importance. Registration is a 'material consideration' in the planning process, meaning that planning authorities must consider the impact of any proposed development on the special character of the landscape.

*This data is sourced from Historic England, Cadw and Historic Environment Scotland.*



## 12 Agricultural designations



### 12.1 Agricultural Land Classification

Records within 250m

3

Classification of the quality of agricultural land taking into consideration multiple factors including climate, physical geography and soil properties. It should be noted that the categories for the grading of agricultural land are not consistent across England, Wales and Scotland.

Features are displayed on the Agricultural designations map on [page 79 >](#)

ID	Location	Classification	Description
1	On site	Grade 2	Very good quality agricultural land. Land with minor limitations which affect crop yield, cultivations or harvesting. A wide range of agricultural and horticultural crops can usually be grown but on some land in the grade there may be reduced flexibility due to difficulties with the production of the more demanding crops such as winter harvested vegetables and arable root crops. The level of yield is generally high but may be lower or more variable than Grade 1.
2	On site	Grade 3	Good to moderate quality agricultural land. Land with moderate limitations which affect the choice of crops, timing and type of cultivation, harvesting or the level of yield. Where more demanding crops are grown yields are generally lower or more variable than on land in Grades 1 and 2.
16	18m E	Urban	-

This data is sourced from Natural England.

## 12.2 Open Access Land

Records within 250m

0

The Countryside and Rights of Way Act 2000 (CROW Act) gives a public right of access to land without having to use paths. Access land includes mountains, moors, heaths and downs that are privately owned. It also includes common land registered with the local council and some land around the England Coast Path. Generally permitted activities on access land are walking, running, watching wildlife and climbing.

This data is sourced from Natural England and Natural Resources Wales.

## 12.3 Tree Felling Licences

Records within 250m

20

Felling Licence Application (FLA) areas approved by Forestry Commission England. Anyone wishing to fell trees must ensure that a licence or permission under a grant scheme has been issued by the Forestry Commission before any felling is carried out or that one of the exceptions apply.

Features are displayed on the Agricultural designations map on [page 79 >](#)

ID	Location	Description	Reference	Application date
3	On site	Selective Fell/Thin (Unconditional)	018/366/15-16	-
4	On site	Selective Fell/Thin (Unconditional)	018/366/15-16	-
5	On site	Selective Fell/Thin (Unconditional)	018/366/15-16	-
6	On site	Selective Fell/Thin (Unconditional)	018/366/15-16	-
7	On site	Selective Fell/Thin (Unconditional)	018/366/15-16	-



ID	Location	Description	Reference	Application date
8	On site	Selective Fell/Thin (Unconditional)	018/366/15-16	-
9	On site	Selective Fell/Thin (Unconditional)	018/366/15-16	-
10	On site	Selective Fell/Thin (Unconditional)	018/366/15-16	-
11	On site	Selective Fell/Thin (Unconditional)	012/142/16-17	14/02/2017
12	On site	Selective Fell/Thin (Unconditional)	012/79/16-17	11/10/2016
13	1m NW	Selective Fell/Thin (Unconditional)	018/366/15-16	-
14	9m W	Selective Fell/Thin (Unconditional)	018/366/15-16	-
15	12m NW	Selective Fell/Thin (Unconditional)	018/366/15-16	-
17	39m SW	Selective Fell/Thin (Unconditional)	018/366/15-16	-
18	43m NW	Selective Fell/Thin (Unconditional)	018/366/15-16	-
19	45m NW	Selective Fell/Thin (Unconditional)	018/366/15-16	-
20	46m NW	Selective Fell/Thin (Unconditional)	018/366/15-16	-
21	56m NW	Single Tree	018/366/15-16	-
A	58m W	Selective Fell/Thin (Unconditional)	018/366/15-16	-
A	61m W	Selective Fell/Thin (Unconditional)	018/366/15-16	-

*This data is sourced from the Forestry Commission.*

## 12.4 Environmental Stewardship Schemes

**Records within 250m**

**0**

Environmental Stewardship covers a range of schemes that provide financial incentives to farmers, foresters and land managers to look after and improve the environment. The schemes identified may be historical schemes that have now expired, or may still be active.

*This data is sourced from Natural England.*

## 12.5 Countryside Stewardship Schemes

**Records within 250m**

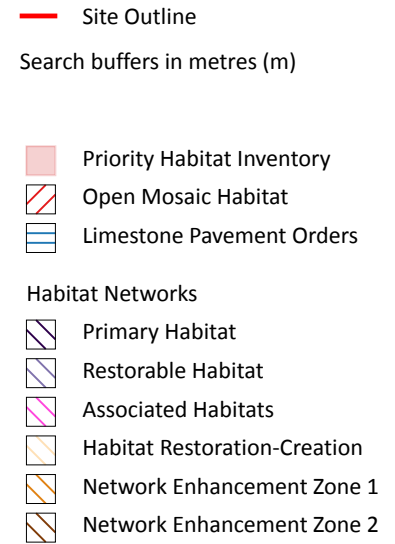
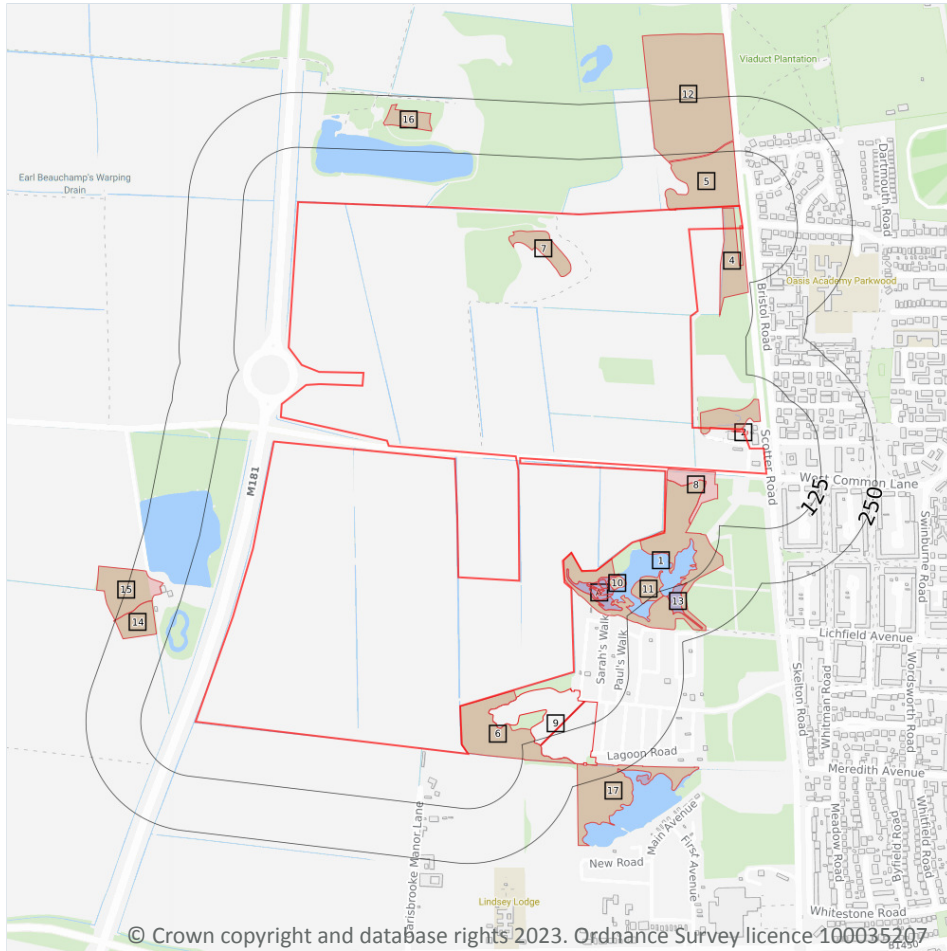
**0**

Countryside Stewardship covers a range of schemes that provide financial incentives to farmers, foresters and land managers to look after and improve the environment. Main objectives are to improve the farmed environment for wildlife and to reduce diffuse water pollution.

*This data is sourced from Natural England.*



## 13 Habitat designations



### 13.1 Priority Habitat Inventory

Records within 250m

21

Habitats of principal importance as named under Natural Environment and Rural Communities Act (2006) Section 41.

Features are displayed on the Habitat designations map on [page 82 >](#)

ID	Location	Main Habitat	Other habitats
1	On site	Deciduous woodland	Main habitat: DWOOD (INV > 50%)
2	On site	Deciduous woodland	Main habitat: DWOOD (INV > 50%)
3	On site	Deciduous woodland	Main habitat: DWOOD (INV > 50%)
4	On site	Deciduous woodland	Main habitat: DWOOD (INV > 50%)



ID	Location	Main Habitat	Other habitats
5	On site	Deciduous woodland	Main habitat: DWOOD (INV > 50%)
6	On site	Deciduous woodland	Main habitat: DWOOD (INV > 50%)
7	On site	Deciduous woodland	Main habitat: DWOOD (INV > 50%)
8	4m E	Deciduous woodland	Main habitat: DWOOD (INV > 50%)
A	7m SE	Deciduous woodland	Main habitat: DWOOD (INV > 50%)
A	24m SE	Deciduous woodland	Main habitat: DWOOD (INV > 50%)
A	30m SE	Deciduous woodland	Main habitat: DWOOD (INV > 50%)
10	34m SE	Deciduous woodland	Main habitat: DWOOD (INV > 50%)
A	39m SE	Deciduous woodland	Main habitat: DWOOD (INV > 50%)
A	42m SE	Deciduous woodland	Main habitat: DWOOD (INV > 50%)
11	75m SE	Deciduous woodland	Main habitat: DWOOD (INV > 50%); LDAGR (INV > 50%)
12	110m NE	Deciduous woodland	Main habitat: DWOOD (INV > 50%)
13	121m SE	Deciduous woodland	Main habitat: DWOOD (INV > 50%)
14	151m SW	Deciduous woodland	Main habitat: DWOOD (INV > 50%)
15	171m SW	Deciduous woodland	Main habitat: DWOOD (INV > 50%)
16	173m N	Deciduous woodland	Main habitat: DWOOD (INV > 50%)
17	203m S	Deciduous woodland	Main habitat: DWOOD (INV > 50%)

*This data is sourced from Natural England.*

## 13.2 Habitat Networks

**Records within 250m**

**0**

Habitat networks for 18 priority habitat networks (based primarily, but not exclusively, on the priority habitat inventory) and areas suitable for the expansion of networks through restoration and habitat creation.

*This data is sourced from Natural England.*



### 13.3 Open Mosaic Habitat

Records within 250m

1

Sites verified as Open Mosaic Habitat. Mosaic habitats are brownfield sites that are identified under the UK Biodiversity Action Plan as a priority habitat due to the habitat variation within a single site, supporting an array of invertebrates.

Features are displayed on the Habitat designations map on [page 82 >](#)

ID	Location	Site reference	Identification confidence	Primary source	Secondary source	Tertiary source
9	13m S	HLD_refs: EAHLD3029 7	Low	Environment Agency Historic Landfill Sites	UK Perspectives Aerial Photography	-

*This data is sourced from Natural England.*

### 13.4 Limestone Pavement Orders

Records within 250m

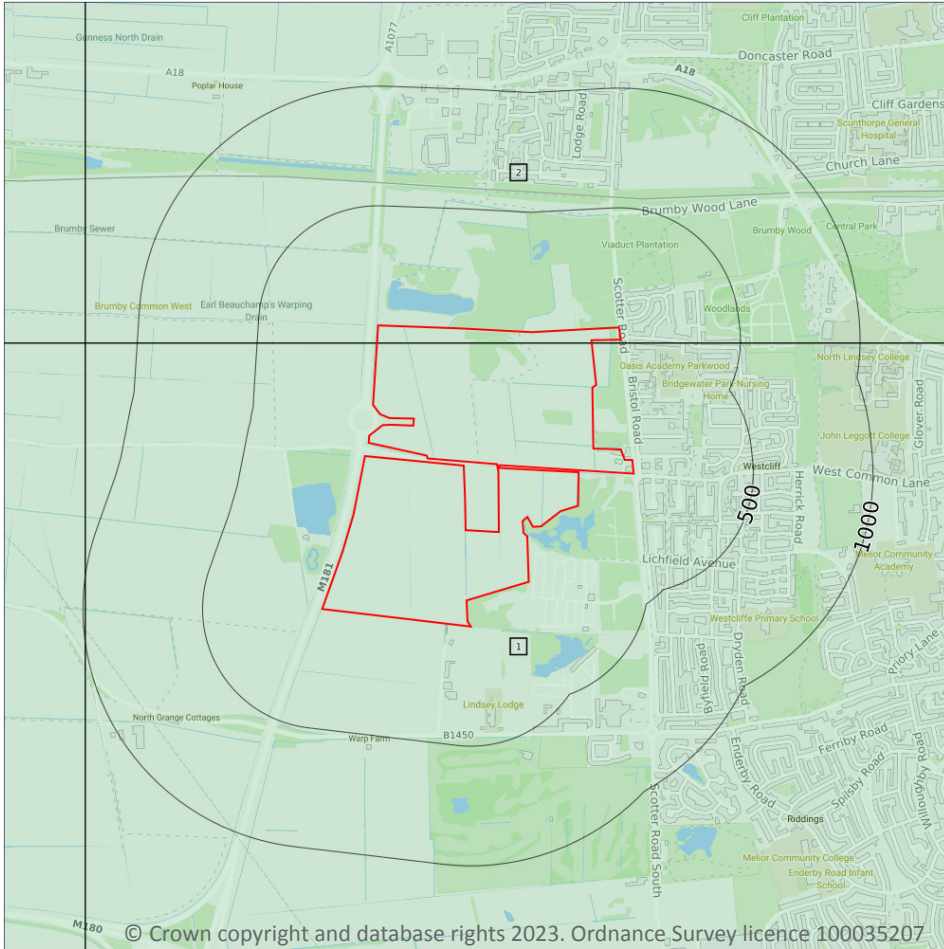
0

Limestone pavements are outcrops of limestone where the surface has been worn away by natural means over millennia. These rocks have the appearance of paving blocks, hence their name. Not only do they have geological interest, they also provide valuable habitats for wildlife. These habitats are threatened due to their removal for use in gardens and water features. Many limestone pavements have been designated as SSSIs which affords them some protection. In addition, Section 34 of the Wildlife and Countryside Act 1981 gave them additional protection via the creation of Limestone Pavement Orders, which made it a criminal offence to remove any part of the outcrop. The associated Limestone Pavement Priority Habitat is part of the UK Biodiversity Action Plan priority habitat in England.

*This data is sourced from Natural England.*



## 14 Geology 1:10,000 scale - Availability



— Site Outline  
Search buffers in metres (m)

- Full coverage
- Partial coverage
- No coverage

### 14.1 10k Availability

Records within 500m

2

An indication on the coverage of 1:10,000 scale geology data for the site, the most detailed dataset provided by the British Geological Survey. Either 'Full', 'Partial' or 'No coverage' for each geological theme.

Features are displayed on the Geology 1:10,000 scale - Availability map on [page 85](#) >

ID	Location	Artificial	Superficial	Bedrock	Mass movement	Sheet No.
1	On site	Full	Full	Full	Full	SE80NE
2	On site	Full	Full	Full	Full	SE81SE

This data is sourced from the British Geological Survey.



Contact us with any questions at:

[info@groundsure.com](mailto:info@groundsure.com) ↗

01273 257 755

Date: 30 June 2023

## Geology 1:10,000 scale - Artificial and made ground

### 14.2 Artificial and made ground (10k)

Records within 500m

0

Details of made, worked, infilled, disturbed and landscaped ground at 1:10,000 scale. Artificial ground can be associated with potentially contaminated material, unpredictable engineering conditions and instability.

*This data is sourced from the British Geological Survey.*

