

Project: Proposed Fascia and Signage for The Monument Garage, Bigby Road, Brigg, DN20 8HH

Design and Access Statement

1. Introduction

The Design and Access Statement accompanies a planning application for consent of display advertisement at The Monument Garage, Bigby Road, Brigg, DN20 8HH.

This document details the specifications for advertisement sizes, materials, and designated installation locations.

2. Site Context

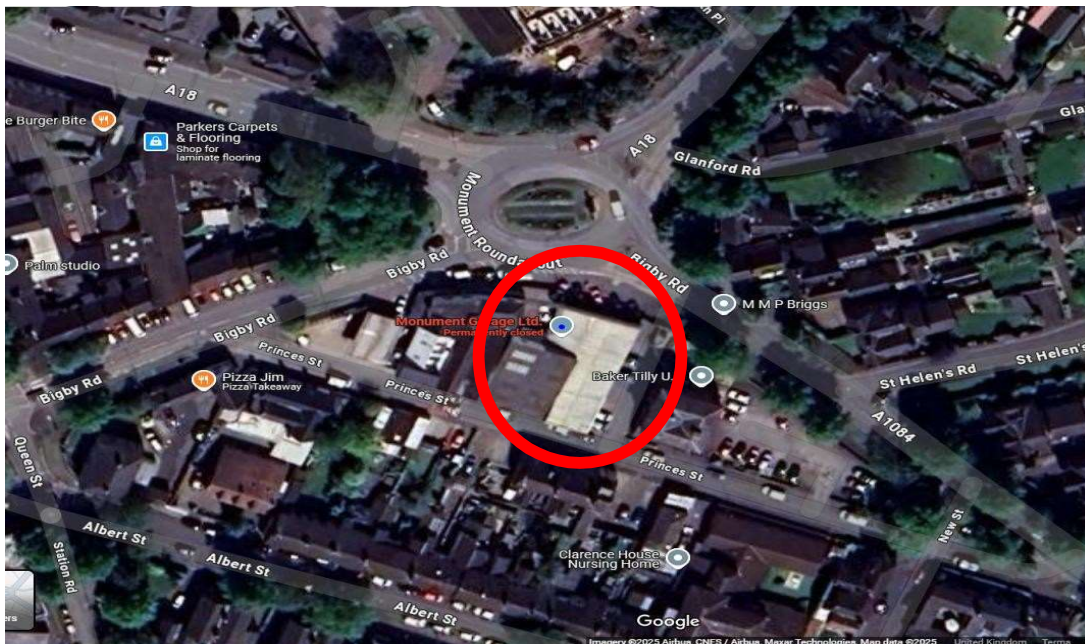


Figure 01: Site Location

The site comprises approximately 0.22 acres (0.089 hectares) and includes a single-storey commercial building previously used as a car showroom and servicing garage (Monument Garage).

The building is of a single-story steel frame construction with a multi-pitched roof and large glazed frontage and brick elevation part rendered. There is an adjoining forecourt for vehicle display and parking, with service access via Princes Street to the south. The site occupies a prominent location adjacent to the Monument Roundabout, where the A18 and A1084 intersect, providing high visibility and excellent accessibility by road. Surrounding uses include a mix of commercial premises (e.g. dental clinic, hand car

wash, and kitchen retailer), residential housing, and the wider Brigg town centre retail zone, which lies to the west.

3. Proposed Signage Plan

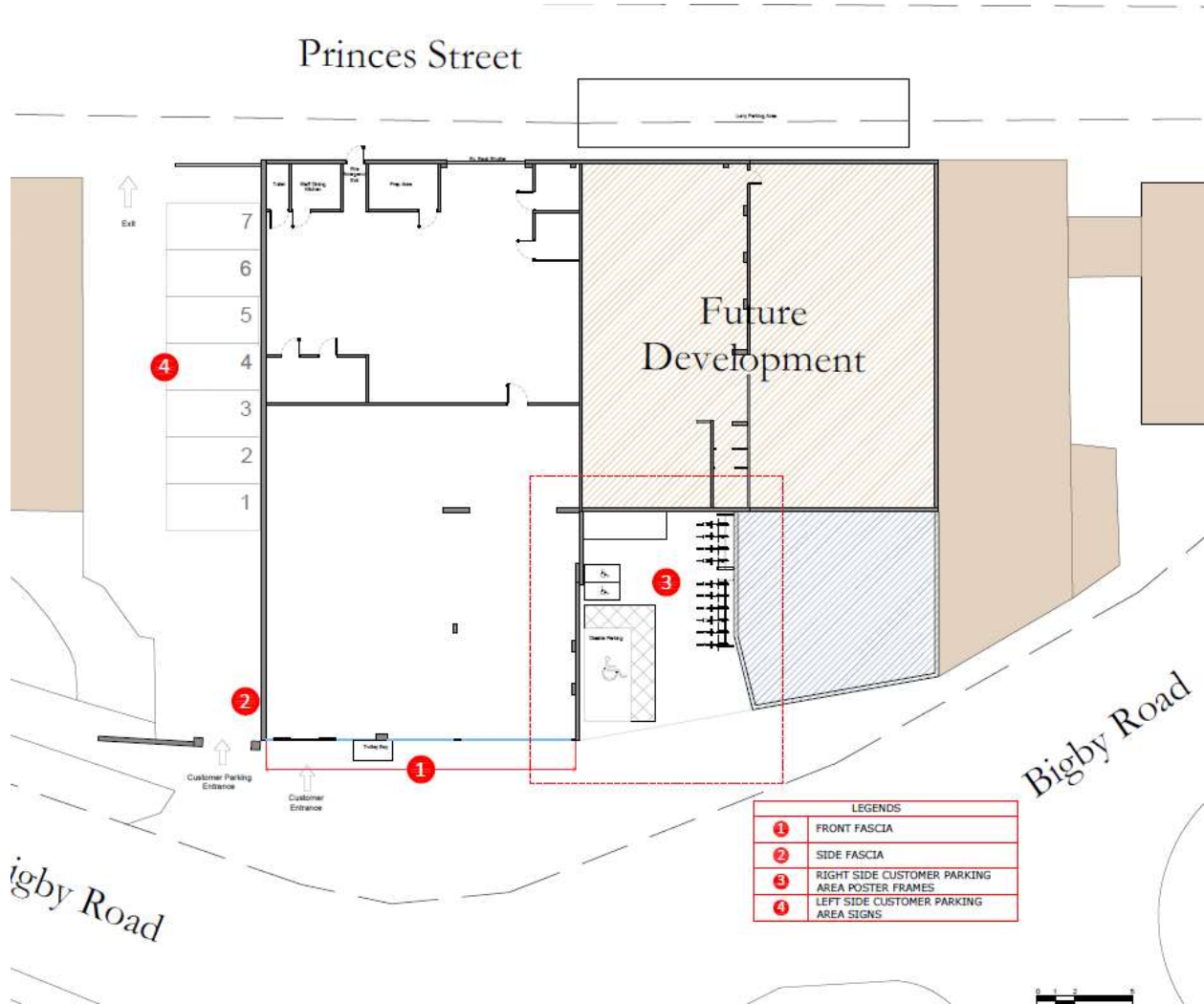


Figure 02: Proposed Signage locations

The site plan showing the layout of a commercial building and surrounding areas, including parking and proposed signage locations. The red marks correspond to various signage and display features, which are labeled numerically and explained in the legend box at the bottom right of the image.

3.1 SIGNAGE 1-FRONT FASCIA



Figure 03: Existing Front



Figure 04: Proposed Front Fascia

This refers to the signage or branding located on the front-facing part of the building, visible from Bigby Road. The size may be adjusted slightly in length. The existing signage is to be replaced with new signage.

The fascia sign board consists of a frame made from 45mm X 100mm aluminum L-angles, topped with a 1.5mm galvanized metal sheet that is green RAL 6005 powder-coated. The brand name and letters displayed on the front using high-quality vinyl signage applied over the coated metal surface and securely mounted using appropriate fixing rails.

External illumination will be provided by 15 existing spotlights. The underside of the sign will be positioned at an approximate height of 2800mm above ground level. Shop front will remain as existing glass. The existing glazed shopfront will remain without alteration.

3.2 SIGNAGE 2-SIDE FASCIA SIGN



Figure 05: Existing Wall

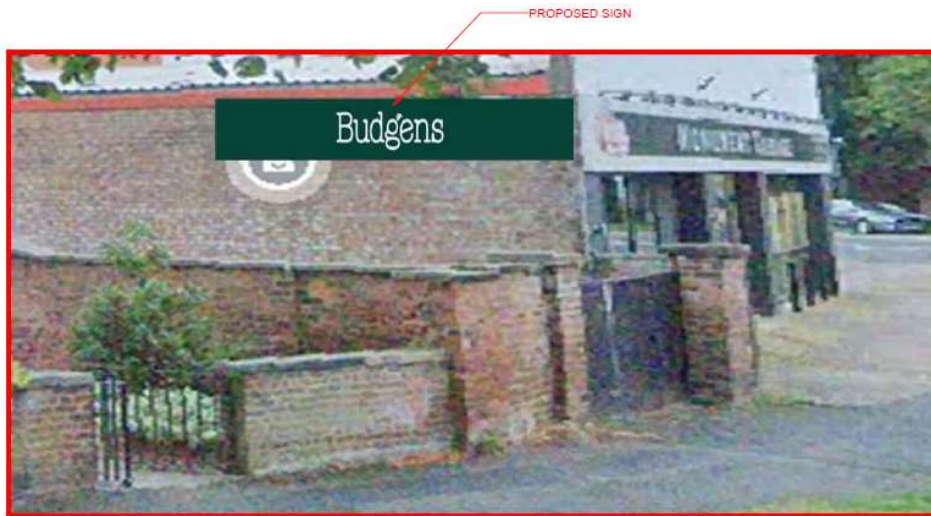


Figure 06: Proposed Side Fascia



The fascia sign board consists of a frame made from 45mm X 100mm aluminum L-angles, topped with a 1.5mm galvanized metal sheet that is green powder-coated. The letters displayed on the front using high-quality vinyl signage applied over the coated metal surface and securely mounted using appropriate fixing rails.

The underside of the sign will be positioned approximately 2800mm above ground level.

3.3 SIGNAGE 3- RIGHT SIDE CUSTOMER PARKING AREA POSTER FRAMES



Figure 07: Existing Parking

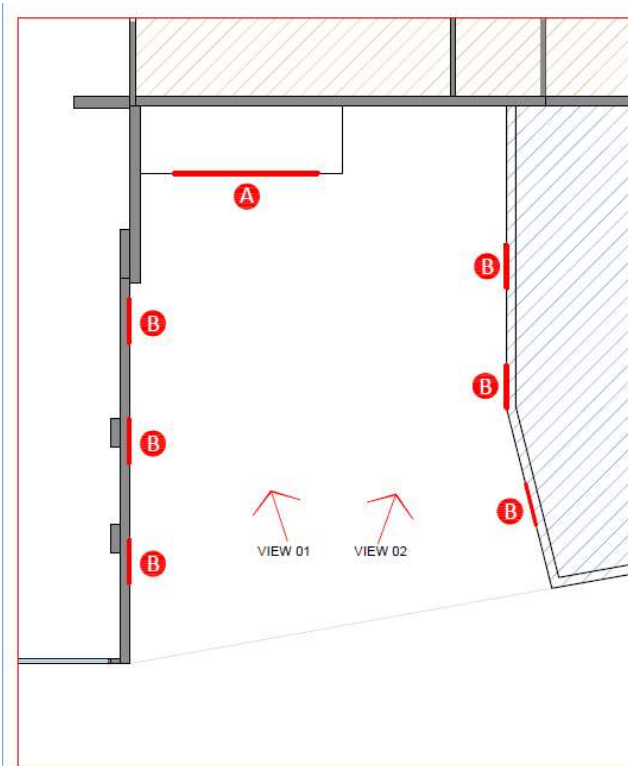


Figure 8: Proposed Signage in Car Parking

This image shows a plan layout with designated signage or advertisement locations, identified with labels **A** and **B** in red in the right car park area, single **A** sign and there are six **B** signs.



Figure 9: Proposed Signages



Figure 10: Proposed Signages



Printed on weather-resistant vinyl and framed, then mounted on a rigid board or fixed directly to the wall using masonry-appropriate nails.

3.4. SIGNAGE 4-LEFT SIDE CUSTOMER PARKING AREA SIGNS

These signs feature vinyl lettering applied over an aluminum composite base panel, installed in the parking area on the right side, likely used for advertising or informational purposes.



Figure 11: Proposed Side Fascia

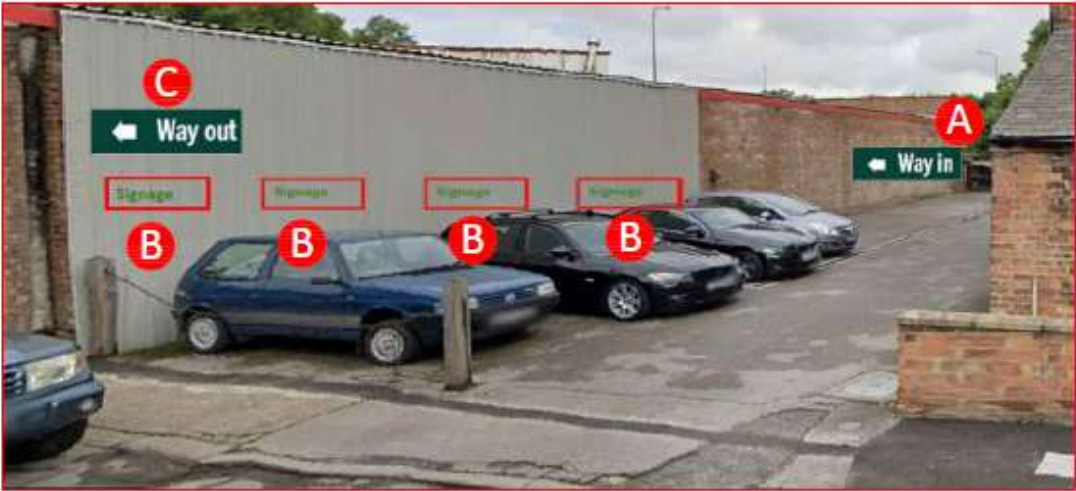
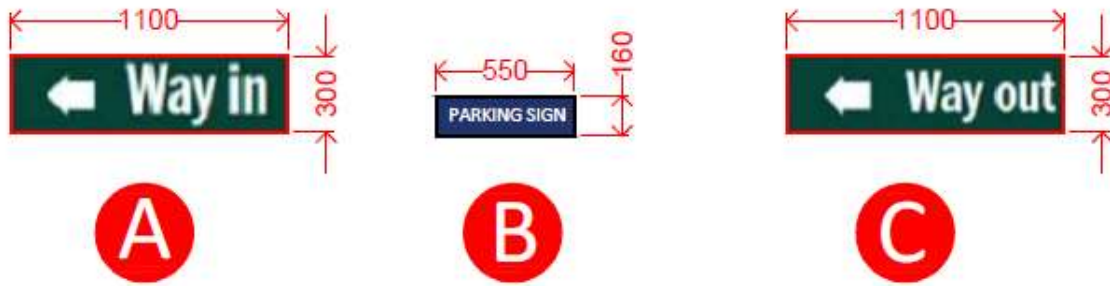


Figure 12: Proposed Side Fascia



Vinyl lettering applied over an aluminum composite base panel to be secured using fixing rails to suit.

4.0 CONCLUSION

The proposed signage scheme for The Monument Garage, Bigby Road, Brigg, DN20 8HH has been designed to enhance the site's visual identity, improve customer orientation.

Each sign is crafted using high-quality, durable materials such as aluminum composite panels and weather-resistant vinyl, ensuring long-term resilience and professional presentation.

The placement of signs including fascia boards and parking area signage has been strategically planned to maximize visibility while maintaining a cohesive and consistent design aesthetic. The existing glazed shopfront will remain without alteration.

By combining effective branding, clear wayfinding, and thoughtful integration with the built environment, the proposal supports the functional and commercial use of the premises, aligns with local context, and contributes positively to the streetscape.