

Heritage Statement – Monument Garage, Bigby Road, Brigg, DN20 8HG

Site is situated on Bigby Road, one of the key routes leading into the historic market town of Brigg. The site lies within the Brigg Conservation Area. The Bigby Road forms part of a historic route into Brigg, connecting outlying hamlets such as Bigby to the market town center.

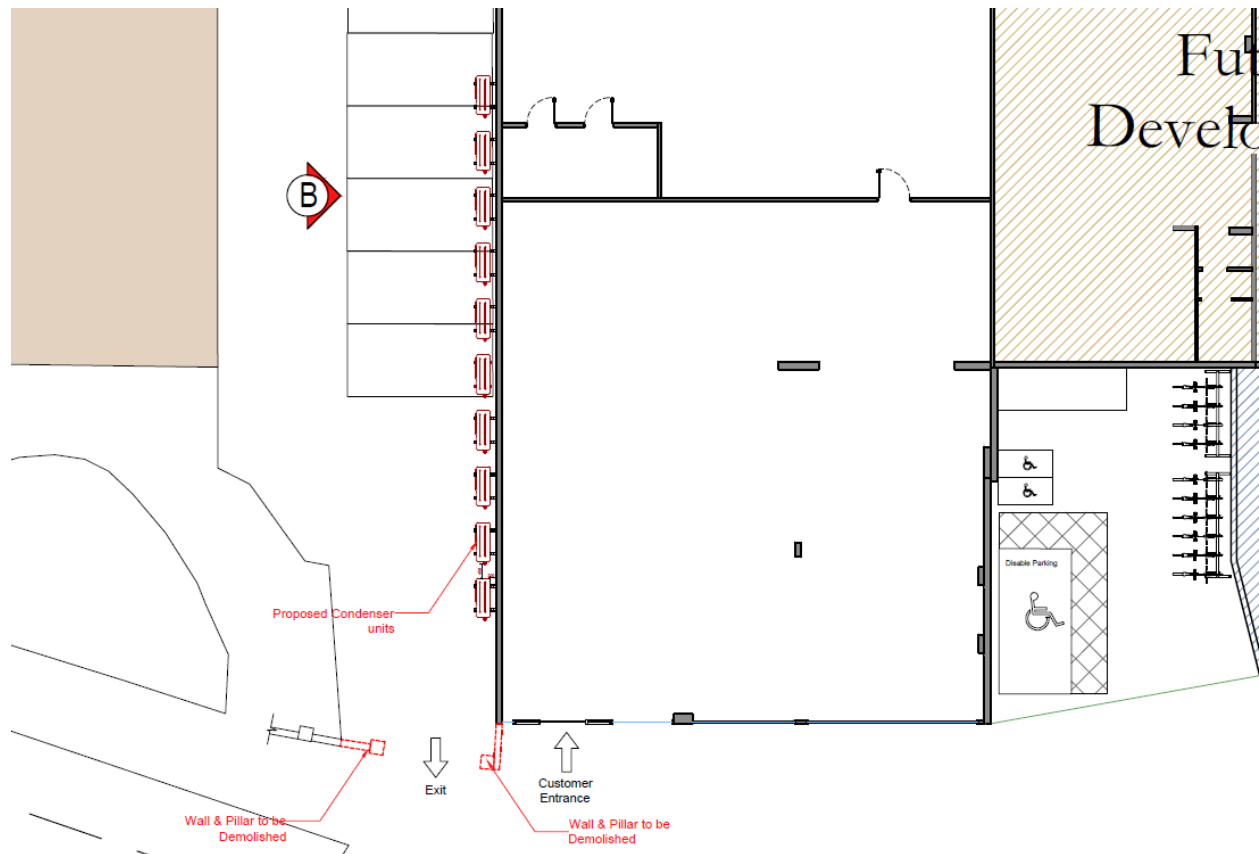


Figure 01: Proposed demolished wall and proposed Condenser units

A small section of the boundary wall at The Monument Garage will be removed, and this has been carefully planned to make sure it does not affect the look and feel of the surrounding Conservation Area. The part of the wall being removed is set back from the road and faces sideways. The change is comparatively small and is needed to make it easier and safer for vehicles to enter, as the current entrance is narrow.

The plan to install 10 external condensing units has been carefully designed to fit in with the look and feel of the Conservation Area. The units, used for fridges and air conditioning, are small in size and will be placed in hidden spots to reduce noise and make sure they are not easily seen. All work will be done with care for the historic surroundings, and the look and position of the equipment will be chosen to protect the area's overall appearance and character.

