

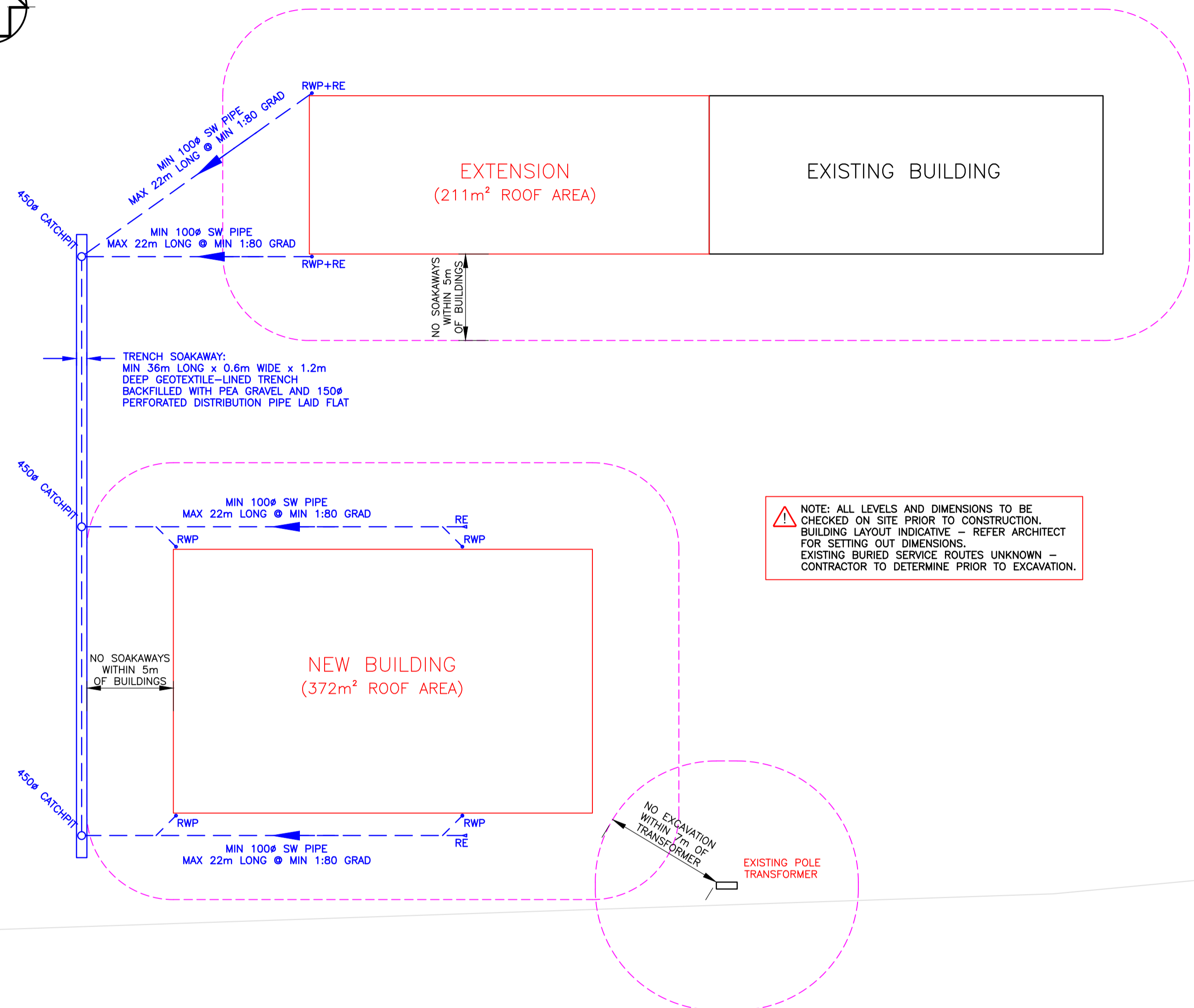
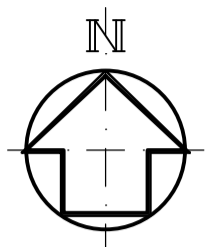
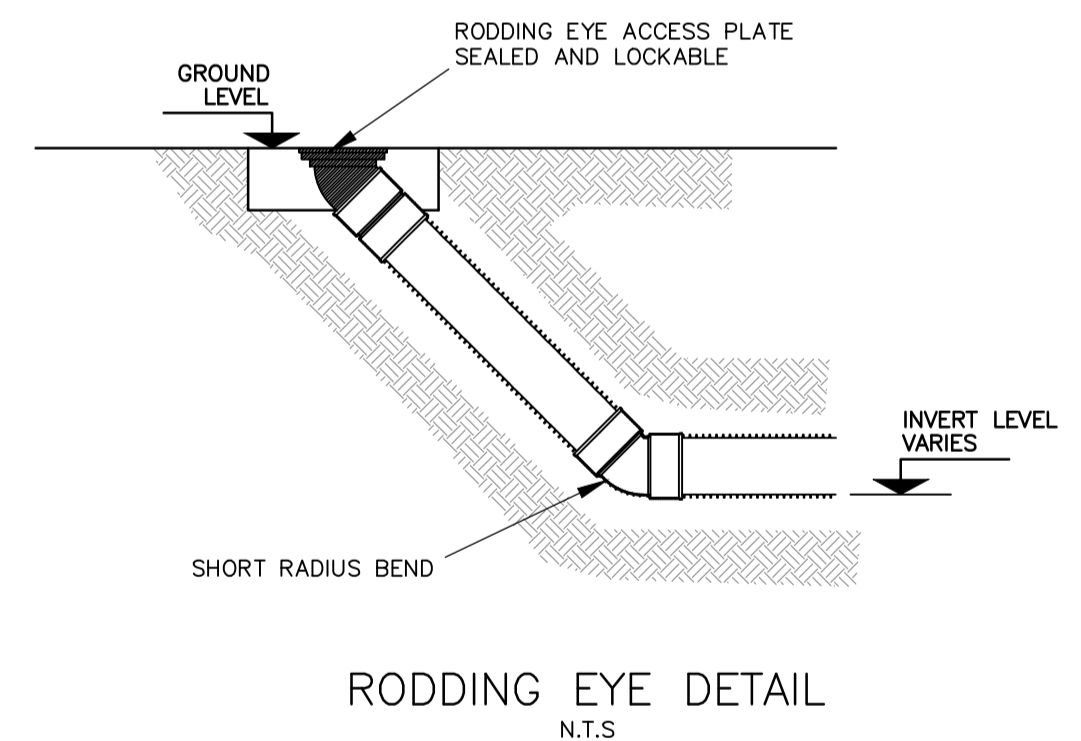
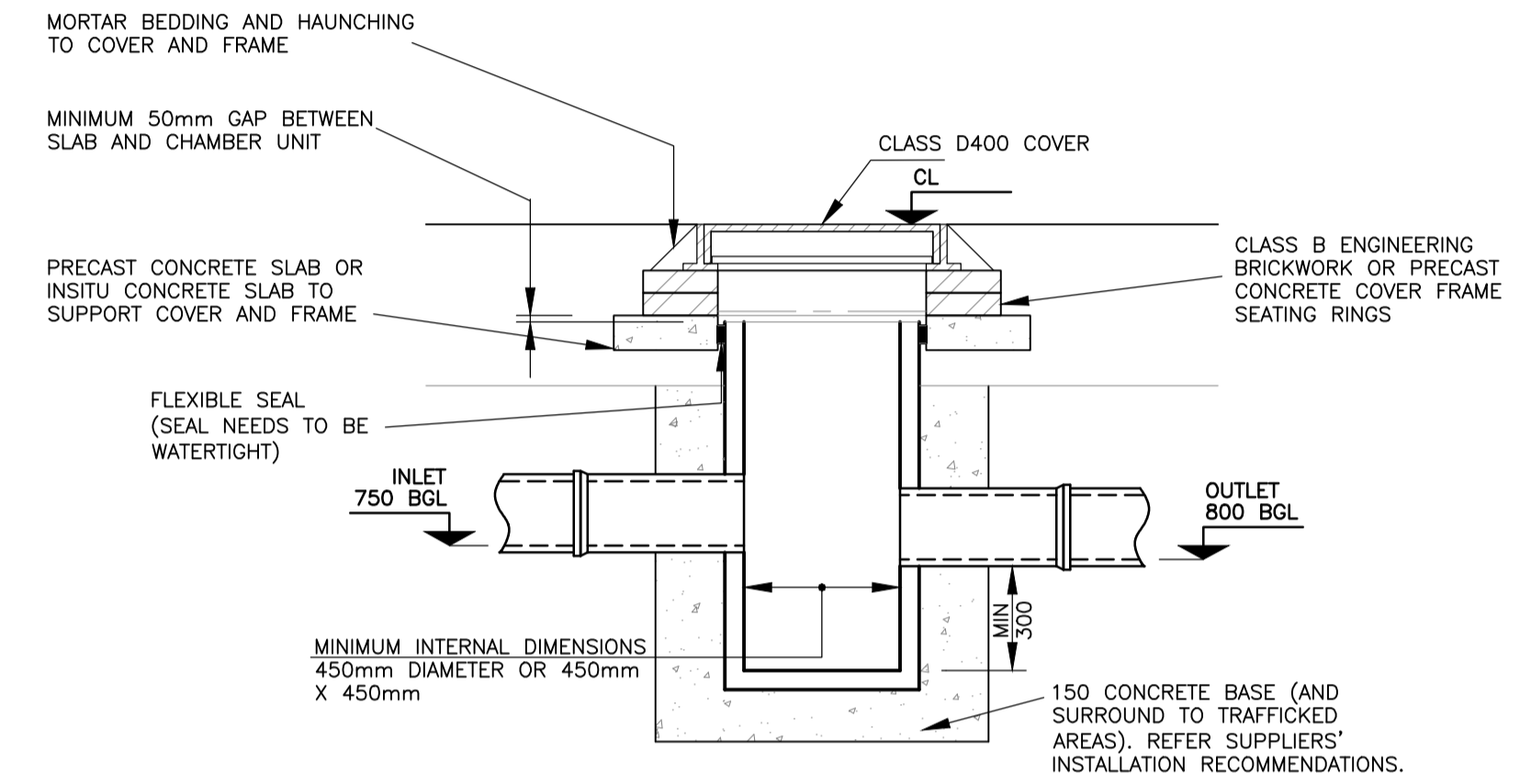
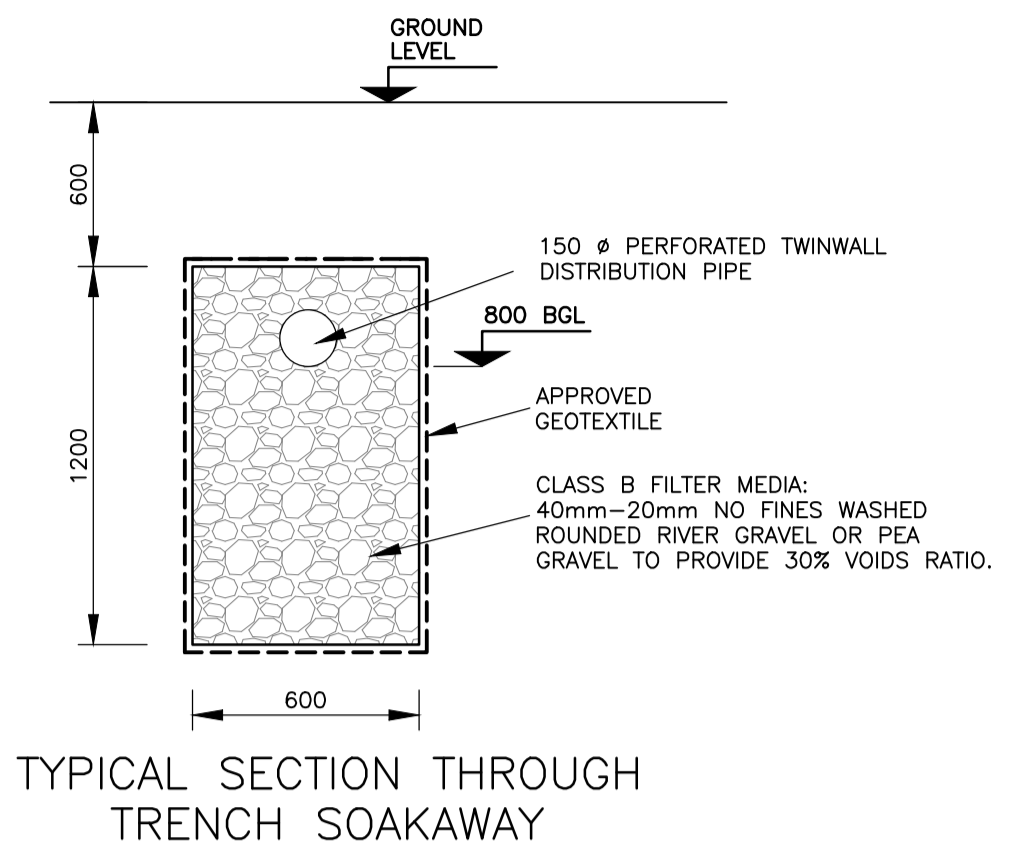
NOTES:

1. THIS DRAWING IS TO BE READ IN CONJUNCTION WITH ALL OTHER RELEVANT ARCHITECTS DRAWINGS AND SPECIFICATIONS.
2. THE SPECIFICATION FOR THE FOUL AND SURFACE WATER DRAINAGE SYSTEM IS TO COMPLY WITH BUILDING REGULATIONS APPROVED DOCUMENT H IN ALL RESPECTS.
3. FULL METHOD STATEMENTS AND RISK ASSESSMENTS MUST BE CARRIED OUT BY THE CONTRACTOR WITH REGARD TO SAFE WORK IN TRENCHES AND THE PROVISIONS OF "SAFE WORKING IN SEWERS AND SEWAGE WORKS" PUBLISHED BY THE NATIONAL HEALTH AND SAFETY COMMITTEE FOR THE WATER SERVICE.
4. ALL PIPES WITH LESS THAN 900mm COVER ARE TO BE ENCASED IN MIN. 150mm CONCRETE WITH JOINTS AT MAX. 5.0m CENTRES. CONTRACTOR TO ENSURE NO DAMAGE OCCURS TO PIPES DUE TO CONSTRUCTION TRAFFIC.
6. ALL MANHOLE AND CHANNEL DRAIN COVERS IN PAVED AREAS TO BE MIN. CLASS C250 TO DIN 19580. COVERS IN HIGHWAYS TO BE MIN CLASS D400 TO DIN 19580.

SOAKAWAY DESIGN:
HIGHWAYS: DESIGN BASED UPON INFILTRATION RATE OF 2.86x10⁻⁴ M/S DERIVED FROM BRE365 INSITU TESTS AND GROUNDWATER LEVEL NOT EXCEEDING 1.8m BGL.

LEGEND:

- SURFACE WATER CHAMBER ○
- SURFACE WATER DRAIN ---
- RAINWATER PIPE (AND RODDING EYE) ● RWP (& RE)



GENERAL ARRANGEMENT SURFACE WATER DRAINAGE
1/200

Rev	Revision	Drn	App	Date
A	CONSTRUCTION ISSUE - TRENCH RELOCATED	RW	MS	8/25
P1	PRELIMINARY - FOR APPROVAL	RW	MS	8/25



YORK SILLS LTD, 5 CHECKPOINT COURT, LINCOLN. LN6 3PW
01522 690815 www.yorksills.co.uk

Client
Mr Andrew Lunn

Project
**PROPOSED AGRICULTURAL BUILDINGS
LEGBOURNE ROAD, HIBALDSTOW**

Title
**SURFACE WATER DRAINAGE
GENERAL ARRANGEMENT AND DETAILS**

Date	Appr	Scale	Drawing No.	Rev
AUG 25	RW	1/200 NOTED	7777/01	A