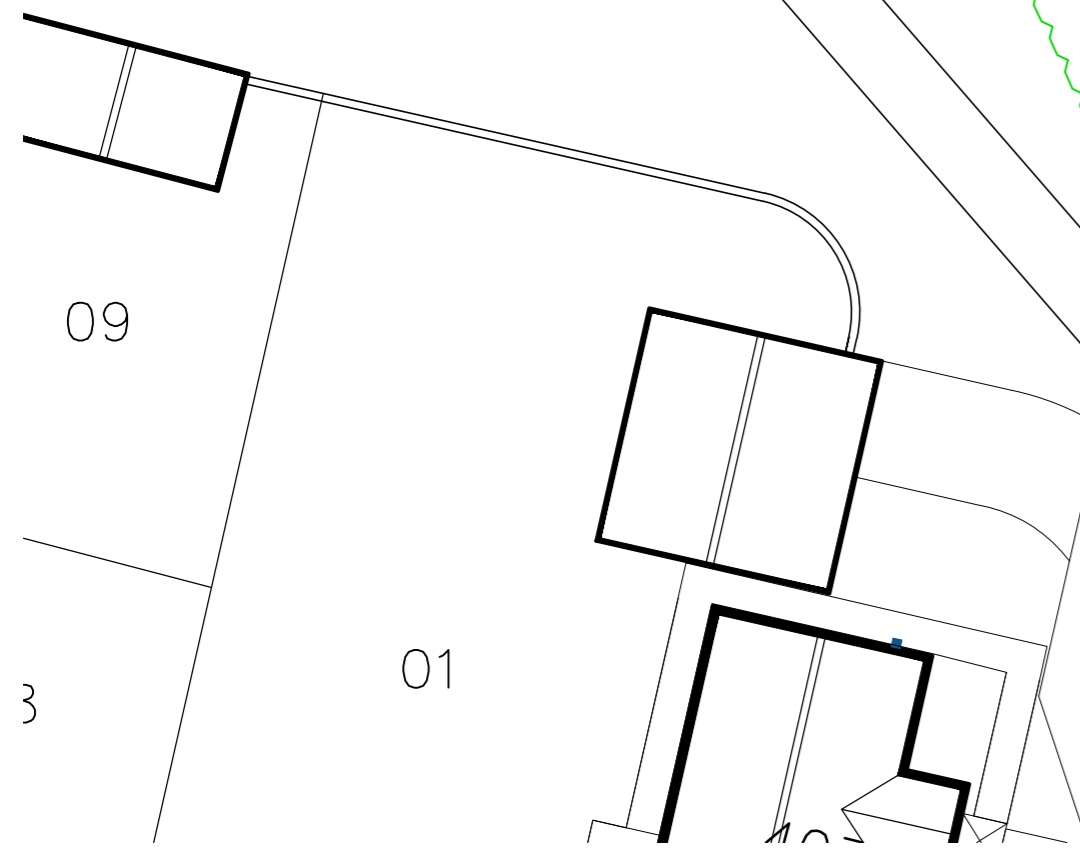
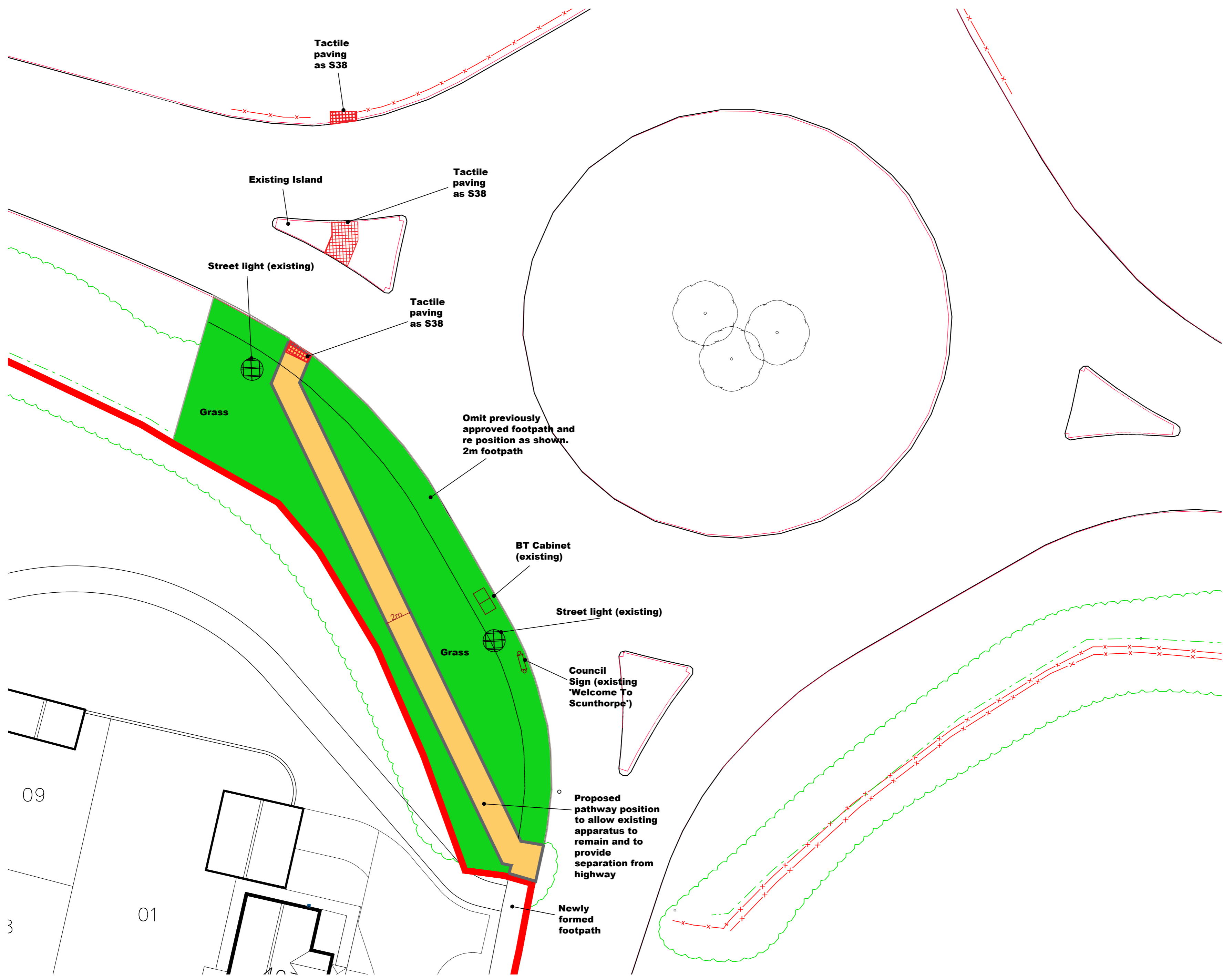


	<b>Tactiles</b>
	<b>Grass Verge Area</b>
	<b>Alternative Route Of Footpath</b>
	<b>Existing Lighting</b>
	<b>BT Floor Box &amp; Cabinet</b>

**General Notes**

- Footpath to be to adoptable standard.
- Grass area to be seeded.
- Existing apparatus to remain in situ.
- BT cabinet.
- Street lighting.
- Council sign.
- Tactile to be to S38 standard.



Rev.	Comments	Date
<b>gleeson</b>		
<small>Gleeson (Yorkshire East) 1st Floor, Prince House, Queensway Court Arkwright Way, Scunthorpe DN16 1AD 01724 709740 www.gleesonhomes.co.uk</small>		
Project: Phoenix Meadows Phoenix Parkway, Scunthorpe		
Title: Alternative Path Route Planning Submission		
Scale: 1:200 @ A2	Date: 21.01.26	Drawn/Checked: AT/RH
Drawing No: 3129-00-01		Revision: --