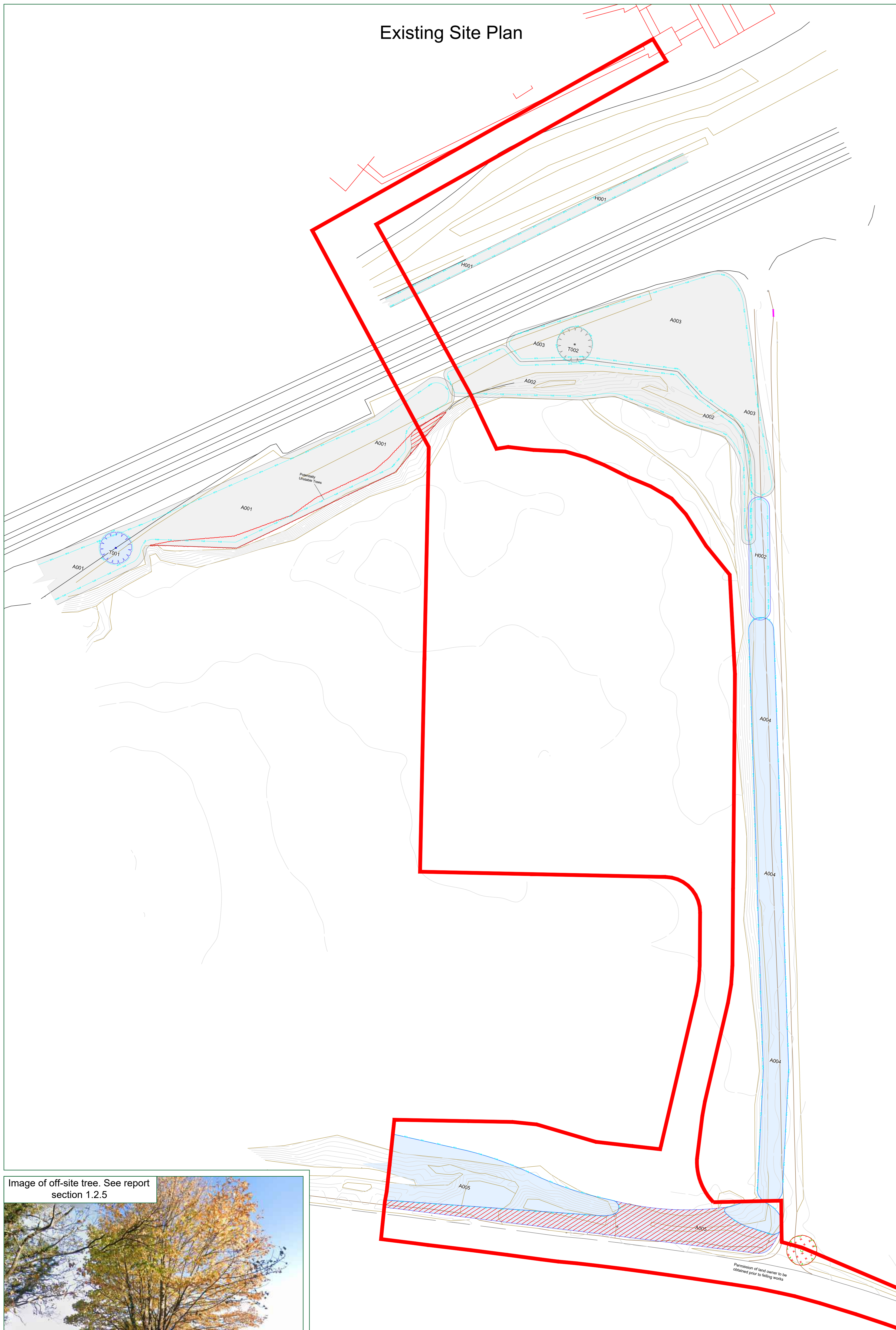
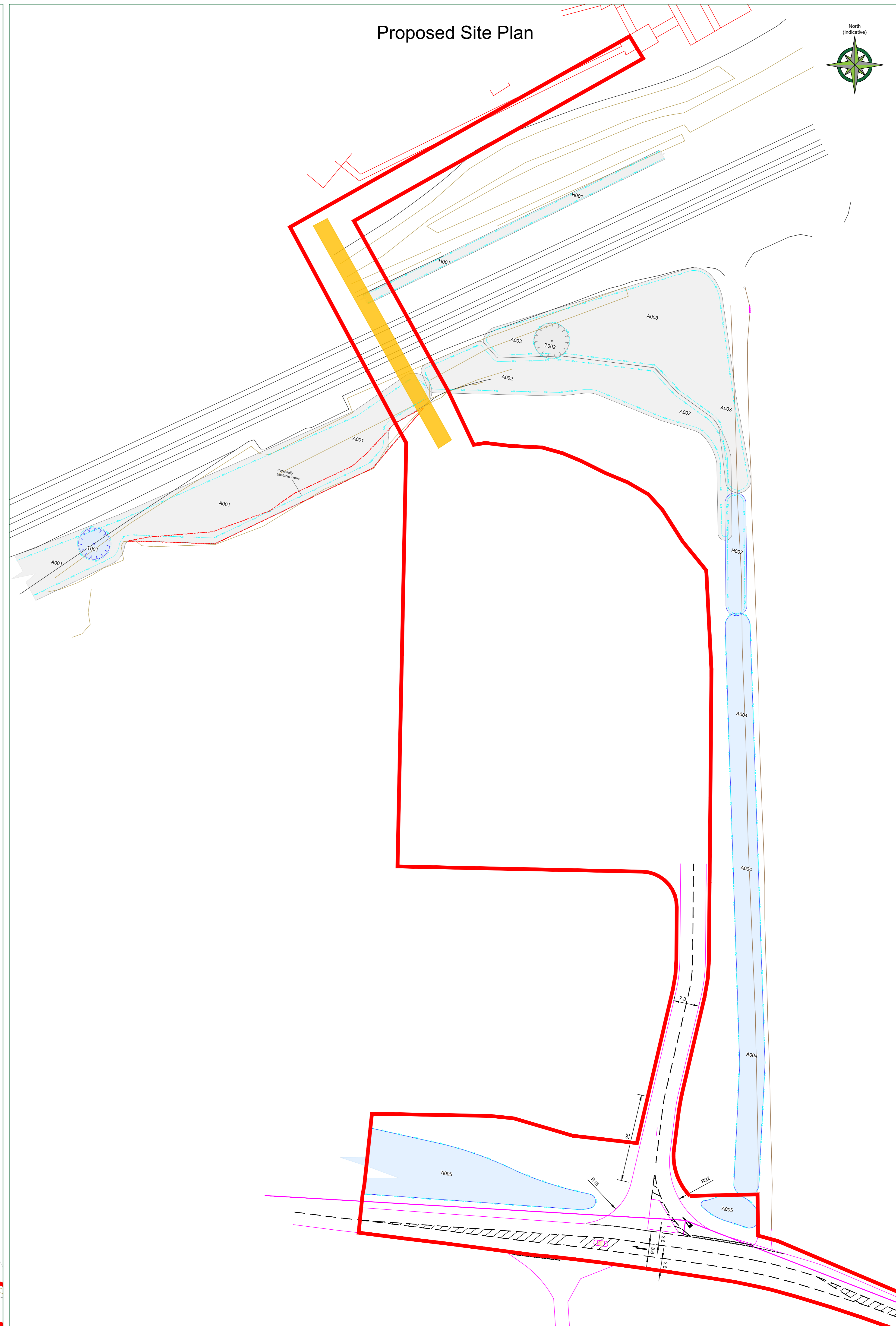


Existing Site Plan



Proposed Site Plan



TREE PROTECTION STATUS

Hayden's sourced TPO & Conservation Area status from the Local Planning Authority's Online Mapping System on 30/01/2025.

- We were informed that:
- No TPO's are present on site
  - The site is not located within a conservation area

We would advise it prudent that before any tree work commences, this is checked directly with the Local Planning Authority to confirm that their online mapping system is definitive.

CATEGORY AND DEFINITION

Trees unsuitable for retention	
Category U	Trees in such condition that they cannot realistically be retained as living trees in the current land use for longer than 10 years
Trees to be considered for retention	
Category A	Trees of high quality with an estimated remaining life expectancy of at least 40 years
Category B	Trees of moderate quality with an estimated remaining life expectancy of at least 20 years
Category C	Trees of low quality with an estimated remaining life expectancy of at least 10 years, or young trees with a stem diameter below 150mm

NOTE:

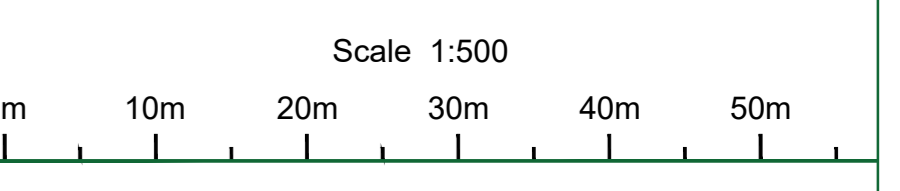
Hayden's Arboricultural Consultants were provided with a Topographical Survey but these do not always show the positions of all the trees/features on site. The locations of any additional features have been fixed using GPS. As such the position of the trees/landscape features should not be taken as exact but gives a fair distribution of their locations on site.

LEGEND

- Existing Tree/Feature BS 5837:2012 Category B
- Existing Tree/Hedge to be removed to allow for development BS 5837:2012 Category B
- Existing Tree/Feature BS 5837:2012 Category C
- Existing Tree/Hedge to be removed to allow for development BS 5837:2012 Category C
- Line of Root Protection Area (RPA) - calculated following guidelines set in BS 5837:2012
- Section to be directionally drilled
- Off-site tree to be felled, not subject to inspection. Data sourced from topographical survey.

Rev	Date	By	Revised
B	08/01/26	GM	Based on 65216055-SWE-XX-ZZ-D-TP-0002-P03-SiteAccessDesign
A	13/10/25	GM	Changes made to drawing
-	06/10/25	GM	Based on '65216055-SWE-XX-ZZ-D-TP-0002-P03-1-SiteAccessDesign' and '65216371-SWE-XX-XX-D-L-0001-Landscape and Ecological Mitigation Plan LIT'

The position, condition, and dimensions of the trees are based on a site survey undertaken on 28/01/25  
 "The original of this drawing was produced in colour - a monochrome copy should not be relied upon"



© HAYDEN'S 2025  
 5 Moseleys Farm Business Centre  
 Formham All Saints,  
 Bury St Edmunds  
 Suffolk IP28 6JY  
 Head Office: 01284 765391  
 Southern Office: 01722 657423  
 Email: info@treesurveys.co.uk  
 www.treesurveys.co.uk

Client:	Centrica PLC	Project:	Prelim AIA
Site:	Singleton Birch Quarry, Barnetby		
Date:	08/01/26	Drawn By:	GM
Scale:	1:500 (A0)	Checked By:	LA
		Drawn No.:	Cil/Prot11438-D-AIA.dwg
		Project No.:	11438-D-AIA
		Revision:	B

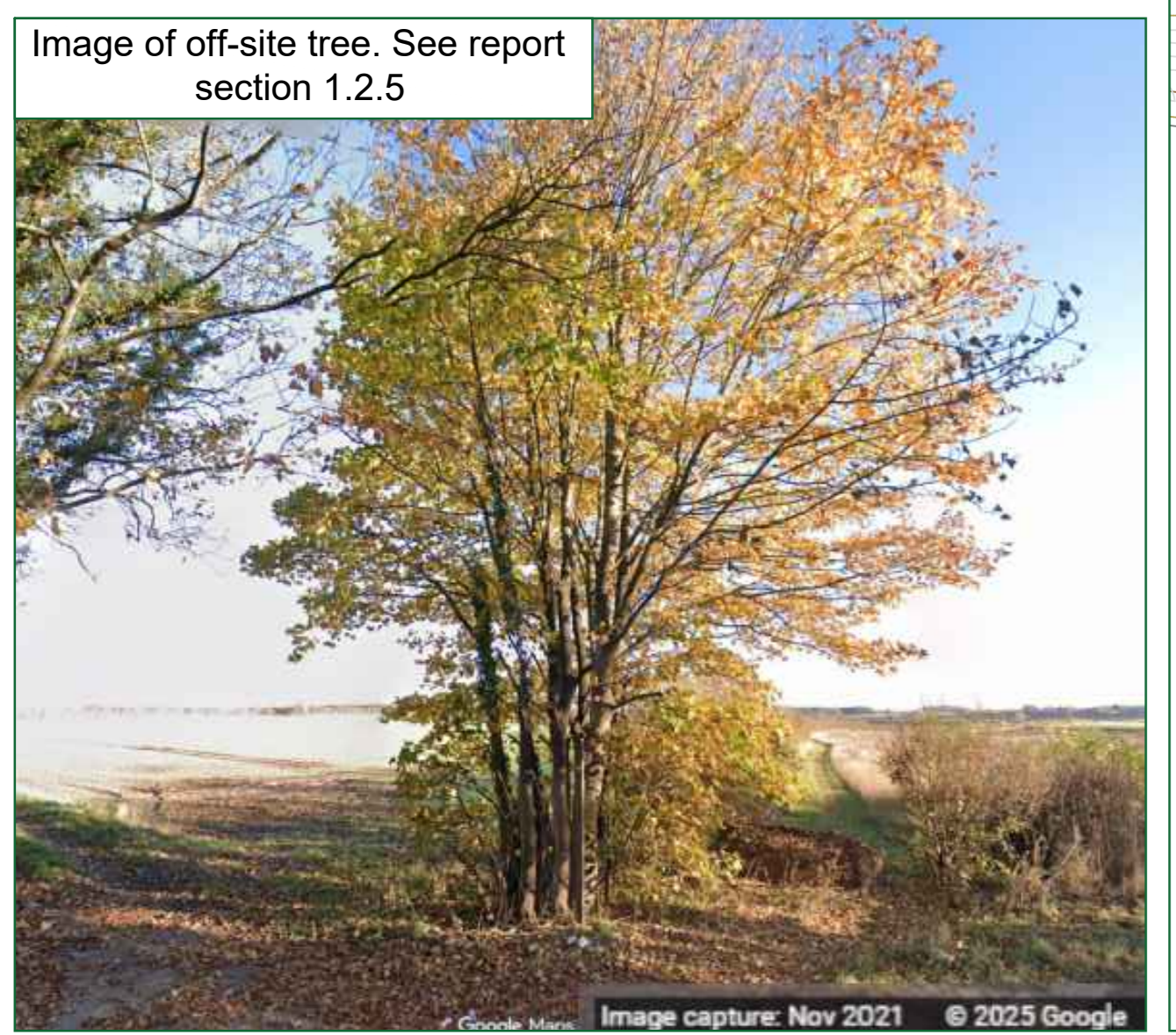


Image capture: Nov 2021 © 2025 Google