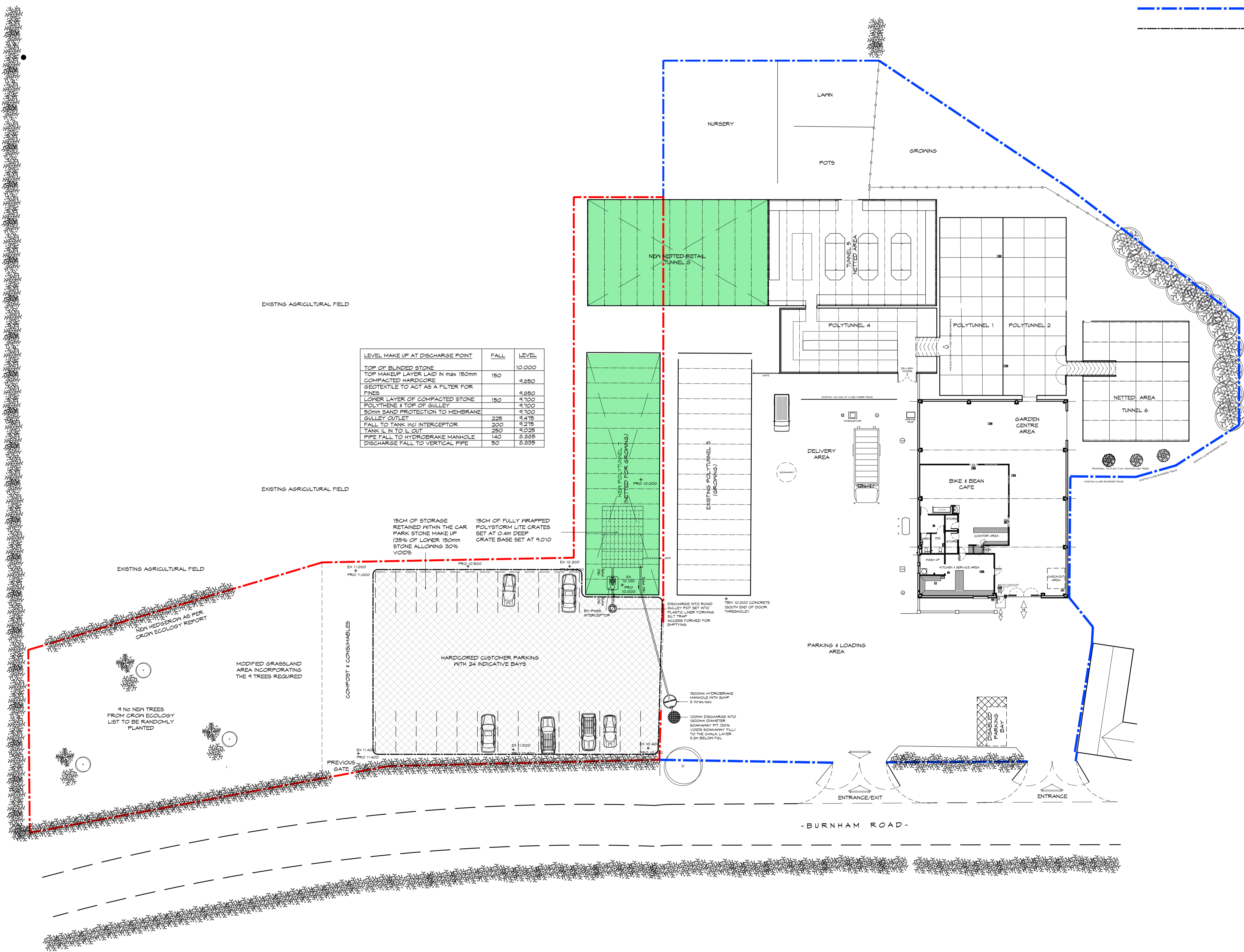
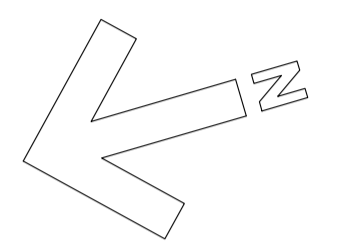


ALL DIMENSIONS & DETAILS GIVEN ON THIS DRAWING ARE TO BE CHECKED ON SITE BY THE CONTRACTOR PRIOR TO WORKS STARTING
ANY DISCREPANCIES TO BE NOTIFIED TO EARN DESIGN SERVICES LIMITED AS SOON AS POSSIBLE

- - - - - BOUNDARY OF CHANGE OF USE
- - - - - EXISTING SITE PERIMETER
- - - - - PERIMETER OF WATER CONTAINMENT MEMBRANE WITH FULL PERIMETER UPSTAND



LEVEL MAKE UP AT DISCHARGE POINT	FALL	LEVEL
TOP OF BLINDED STONE		10.000
TOP MAKEUP LAYER LAID IN MIX 150mm COMPACTED HARDCORE	150	9.850
GEOTEXTILE TO ACT AS A FILTER FOR FINES		9.850
LOWER LAYER OF COMPACTED STONE	150	9.700
POLYTHENE & TOP OF SULLY		9.700
30mm SAND PROTECTION TO MEMBRANE		9.700
SULLY OUTLET	225	9.475
FALL TO TANK IN/ INTERCEPTOR	200	9.275
TANK IN TO IL CUT	250	9.025
PIPE FALL TO HYDROBRAKE MANHOLE	140	8.885
DISCHARGE FALL TO VERTICAL PIPE	50	8.835

15CM OF STORAGE RETAINED WITHIN THE CAR PARK STONE MAKE UP (95% OF LOWER 150mm STONE ALLOWING 30% VOIDS)

15CM OF FULLY WRAPPED POLYSTYRENE LITE GRATES SET AT 0.4m DEEP GRATE BASE SET AT 9.210

PLANNING ISSUE

Date	Drawn	Revision
G		
F		
E		
D	06/05/25	Mike Upton
C	14/12/25	Mike Upton
B	02/12/25	Mike Upton
A	21/10/25	Mike Upton

EARN DESIGN SERVICES LIMITED
 'Energarm'
 7 Schofield Close,
 Barrow upon Humber,
 North Lincolnshire.

CHANGING OF LAND USE TO INCLUDE PARKING, GROWING, POLYTUNNEL (No. 7) & COVERED AREA at DEEPPDALE GARDEN CENTRE LTD WEST WOLD FARM DEEPPDALE BARTON UPON HUMBER DN10 6ED

PROPOSED SITE PLAN

Drawn: Mike Upton	Date: 01/10/25	Scale: 1:250 @ A1
Checked:	Drawing No: EDS477-01	Revision: D
Approved:		