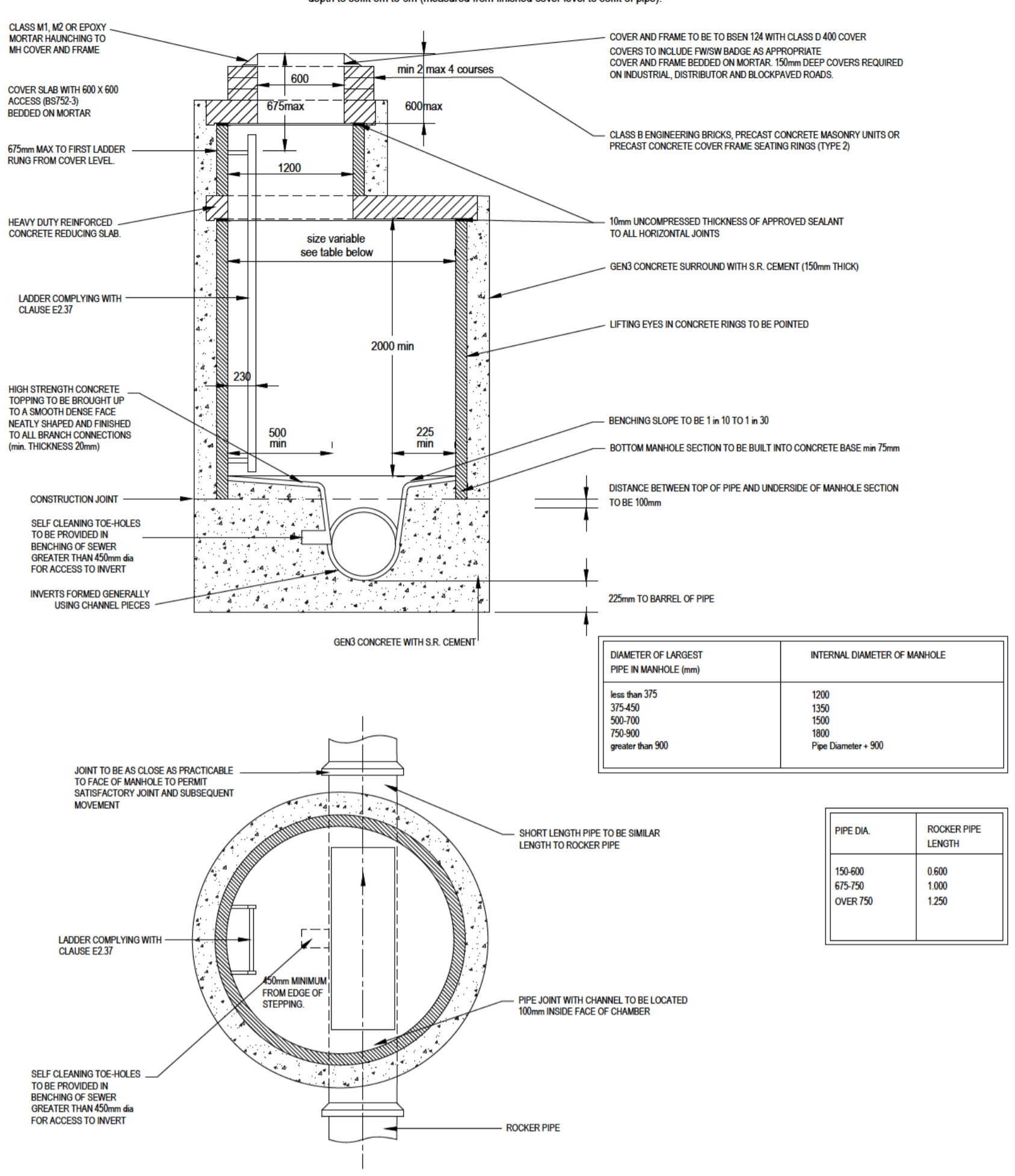


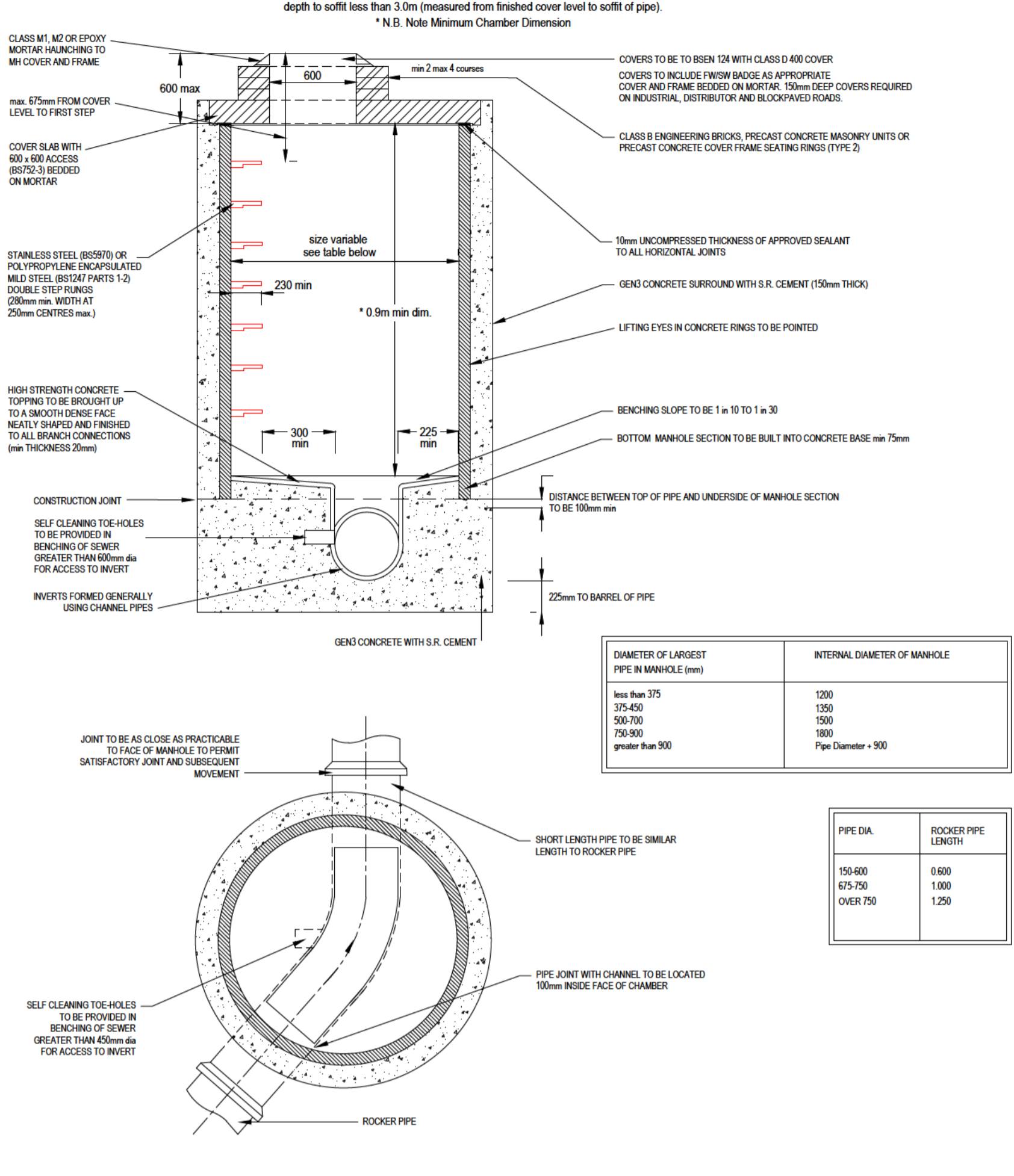
TYPICAL MANHOLE DETAIL - TYPE A



DIAMETER OF LARGEST PIPE IN MANHOLE (mm)	INTERNAL DIAMETER OF MANHOLE
less than 375	1200
375-450	1350
450-700	1500
750-900	1650
greater than 900	Pipe Diameter + 900

PIPE DIA.	ROCKER PIPE LENGTH
150-600	0.600
675-750	1.000
over 750	1.250

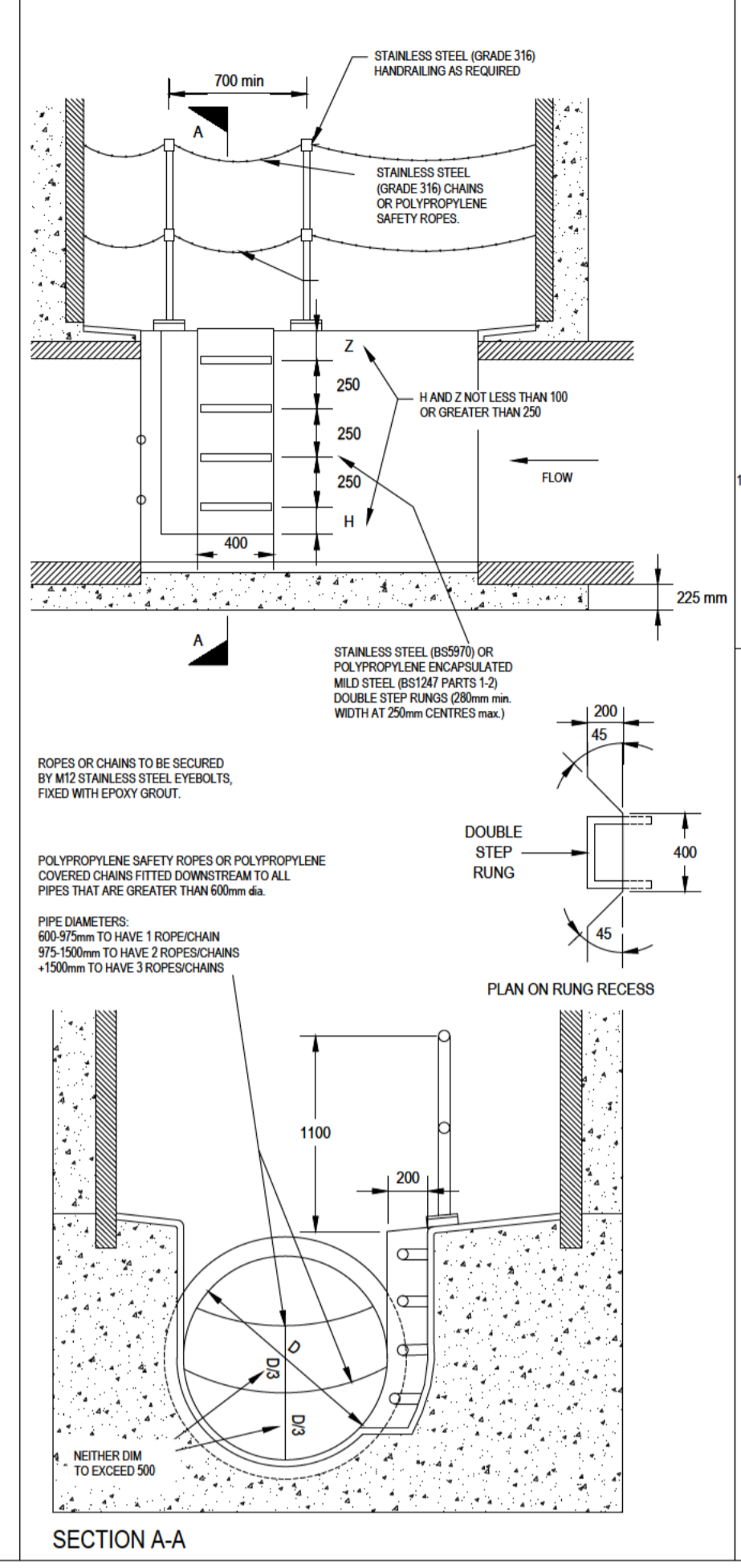
TYPICAL MANHOLE DETAIL - TYPE B



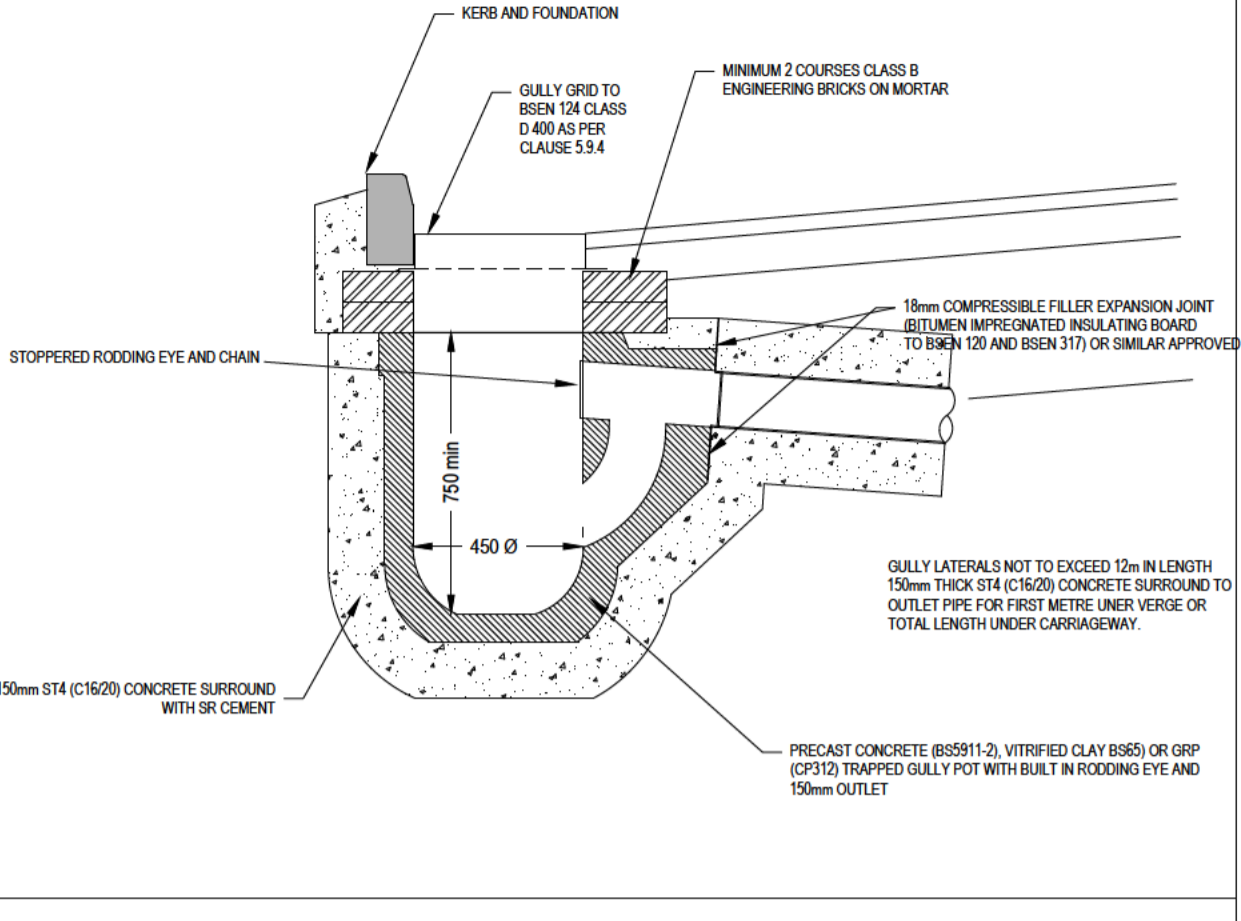
DIAMETER OF LARGEST PIPE IN MANHOLE (mm)	INTERNAL DIAMETER OF MANHOLE
less than 375	1200
375-450	1350
450-700	1500
750-900	1650
greater than 900	Pipe Diameter + 900

PIPE DIA.	ROCKER PIPE LENGTH
150-600	0.600
675-750	1.000
over 750	1.250

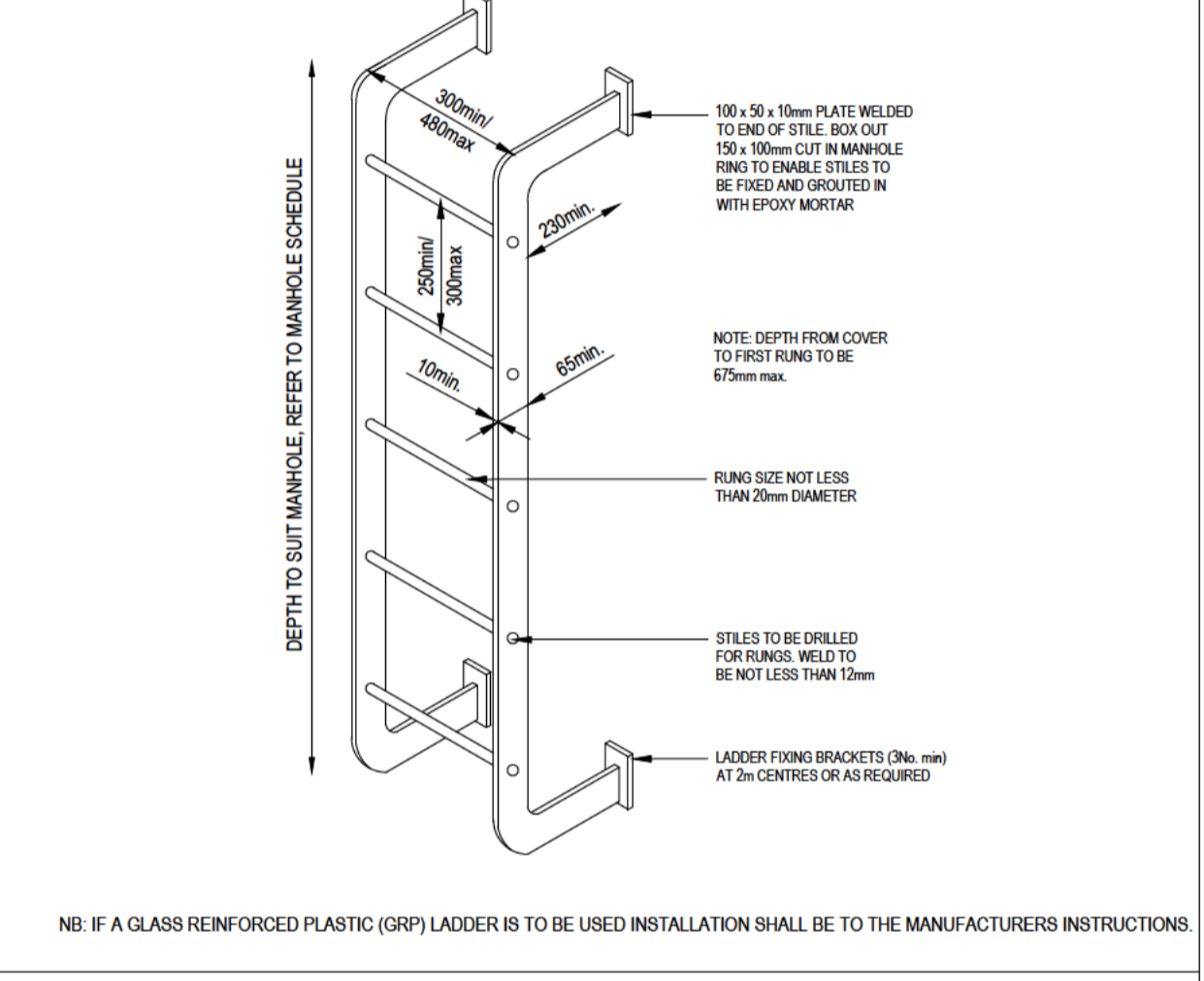
ACCESS TO INVERT FOR PIPES EXCEEDING 600mm Ø.



SECTION THROUGH ROAD GULLY



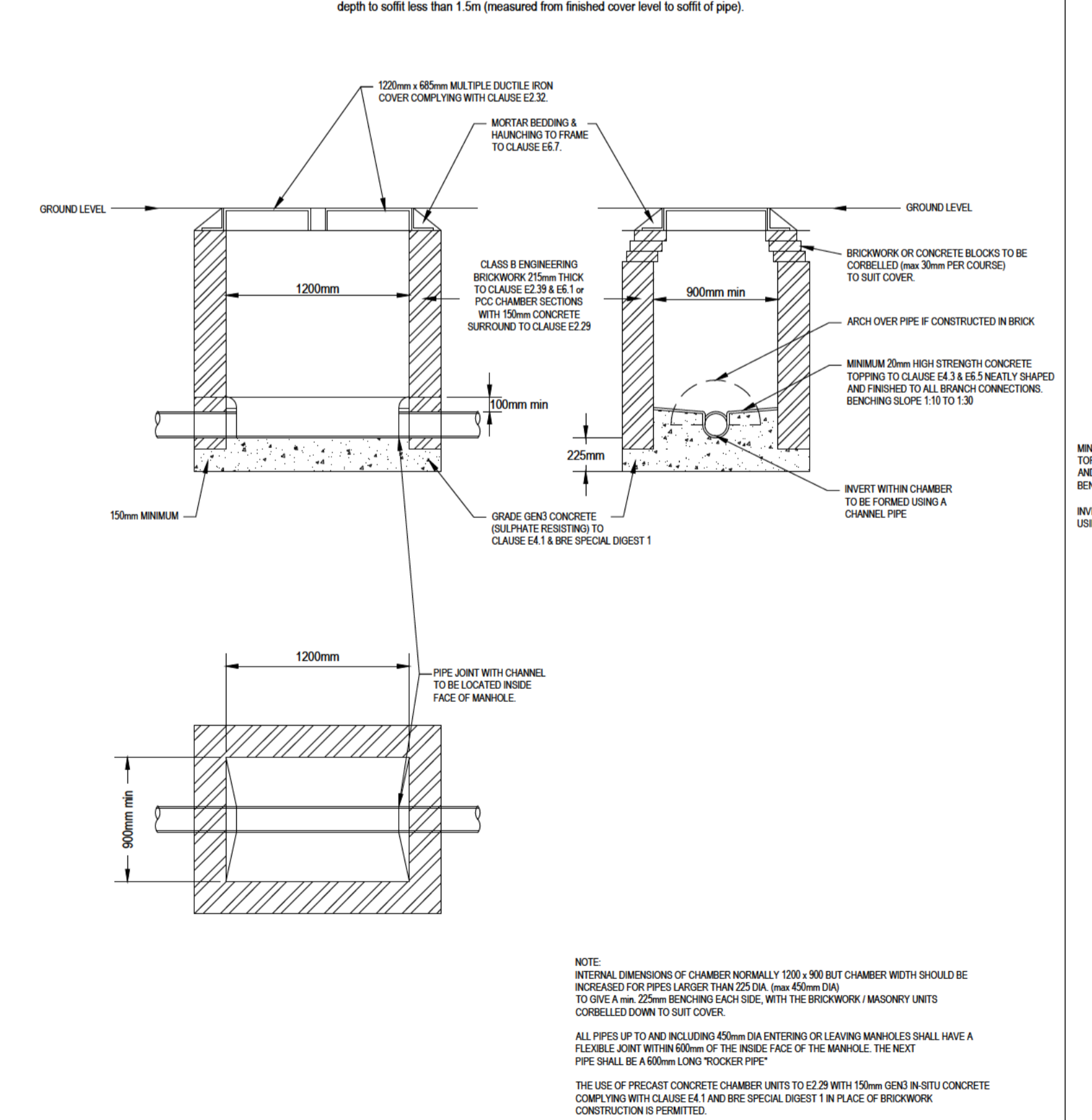
STAINLESS STEEL LADDER DETAIL



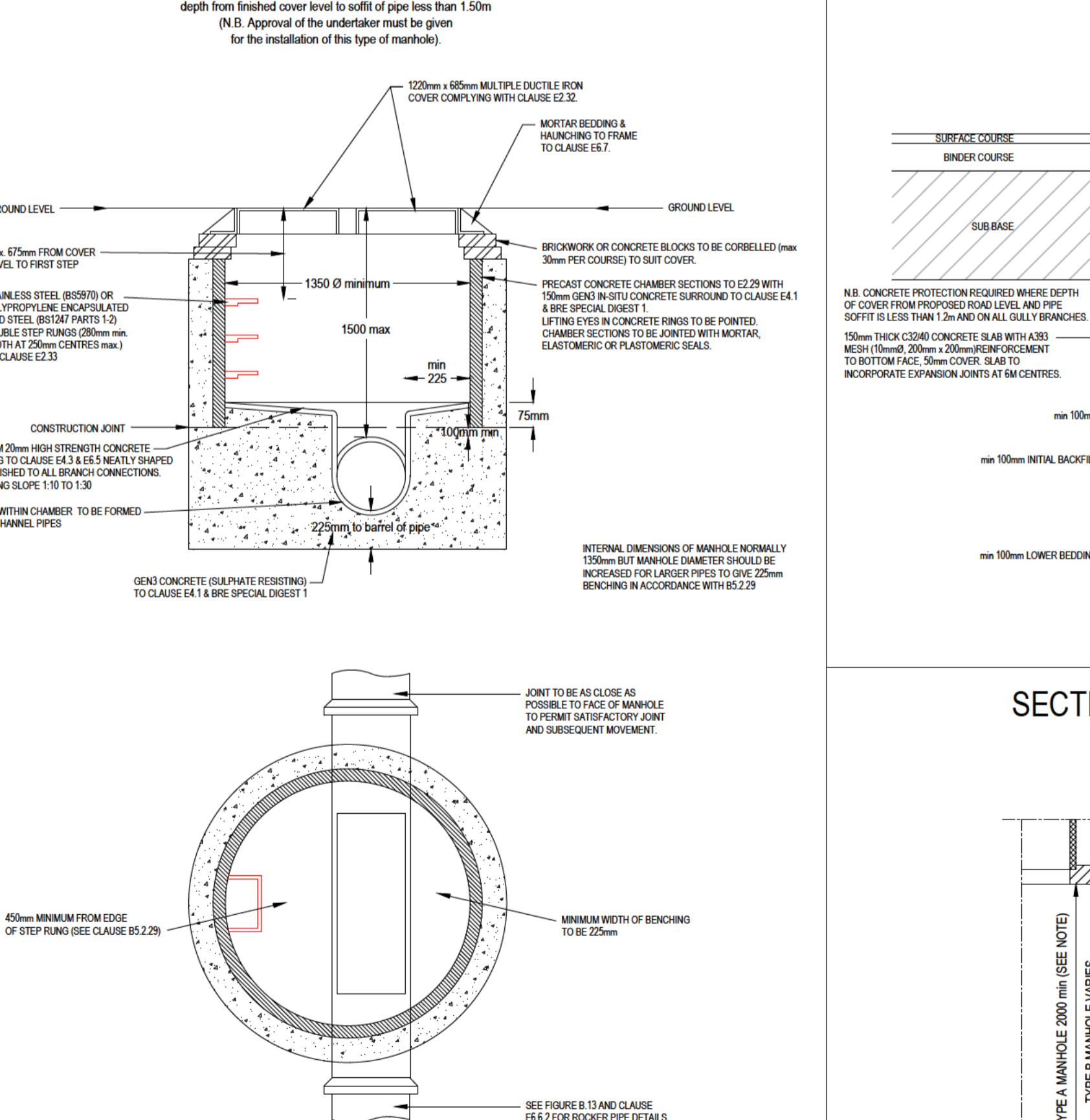
NOTES:
 MANHOLES WITH AN INCOMING SEWER OF 900mm DIAMETER AND OVER TO BE AS APPROVED BY THE WATER AUTHORITY
 CHAMBERS WITH OUTGOING P PIPES GREATER THAN 600mm DIAMETER SHALL BE FITTED WITH STAINLESS STEEL SAFETY CHAINS TO BS6005 OR POLYPROPYLENE SAFETY ROPES
 ALL PRECAST CONCRETE PRODUCTS TO CONTAIN A MINIMUM CLASS 3 SULPHATE RESISTANT CEMENT
 ALL SEWERS PROPOSED FOR ADOPTION UNDER A SECTION 154 AGREEMENT OF THE WATER INDUSTRY ACT 1991 TO BE CONSTRUCTED IN ACCORDANCE WITH THE PROCEDURES AND SPECIFICATIONS OF SEWERAGE SECTOR GUIDANCE (SSG) V2.2 (JUNE 2022) AND DESIGN AND CONSTRUCTION GUIDANCE (DCG) V2.2 (JUNE 2022).
 FOUL BRANCH CONNECTIONS TO BE 100mm dia. LAID NO FLATTER THAN 1:80 WHERE SERVING 2 PLOTS OR LESS AND 150mm dia. LAID NO FLATTER THAN 1:150 WHERE SERVING 3 PLOTS OR MORE (UNLESS OTHERWISE STATED).
 ALL SEWERS AND lateral DRAIN WITHIN DOMESTIC CURT LAGE OF DIAMETER 100mm AND 150mm TO BE EITHER GUY P PIPES OR SERVED BY PVC-U TO BS EN 14011-1:1998 & BS 4660:2000.
 ALL P PEWORK TO BE LAID SOFFIT UNLESS OTHERWISE STATED.
 ALL P PIPES 100mmØ & 150mmØ TO BE PROVIDED WITH CLASS B BED NO. (14mm - 5mm GRAVEL BED AND SURROUND).
 ALL P PIPES 100mmØ & 150mmØ WITH COVER LESS THAN 1.2m TO BE PROVIDED WITH CONCRETE PROTECTION.
 PRECAST CONCRETE PRODUCTS AND IN-SITU CONCRETE TO CONTAIN A MINIMUM CLASS 3 S.R.C. STRUCTURAL CONCRETE TO BE IN ACCORDANCE WITH BS 5328 AND NOT TO BE LESS THAN GRADE FND2 WHEN REINFORCED AND GENS IN ALL OTHER SITUATIONS.
 CAST CONCRETE SHALL BE FINISHED TO PRODUCE A 'FLAT' SURFACE WHERE EXPOSED AND SHALL HAVE A 'ROUGH' FINISH IN ALL OTHER SITUATIONS. STEELWORK SHALL BE IN ACCORDANCE WITH BS4483.
 ALL MANHOLE COVERS TO BE 600x600 CLEAR OPENING IN ACCORDANCE WITH B.S. EN124 CLASS D400 AND EMBOSSED FW.
 MANHOLES ON SEWERS 600mm DIAMETER AND GREATER TO BE FITTED WITH SAFETY CHAINS TO AWS DRG SD358.

THE FIRST MANHOLE UPSTREAM FROM THE CONNECTION TO THE (EXISTING) PUBLIC SEWER SHOULD, WHEN CONSTRUCTED, BE FITTED WITH A SCREEN IN ORDER TO PREVENT CONSTRUCTION DEBRIS ENTERING THE PUBLIC SEWER. THE SCREEN SHOULD NOT BE REMOVED UNTIL IMMEDIATELY PRIOR TO THE OCCUPATION OF THE FIRST DWELLING TO BE SERVED BY THE SEWER.
 ALL GULLIES WITHIN THE HIGHWAY SHALL CONFORM TO BS EN124 GRP 4 (CLASS D400). ALL GULLIES SHALL BE HINGED BUT NON-REMOVABLE AND SHALL HAVE A NOMINAL WIDTH OF 450mm WITH A MINIMUM AREA OF WATERWAY OF 900cm² FOR CARRIAGEWAYS AND A CLEAR OPENING OF AT LEAST 300mm x 300mm FOR FOOTWAYS. THE UPPER SURFACE OF GULLY GRATINGS SHALL BE FLAT AND SLOTS IN GRATINGS OR BETWEEN GRATINGS AND FRAMES SHALL NOT BE ORIENTED PARALLEL TO THE DIRECTION OF TRAFFIC EXCEPT WHERE THE SLOTS ARE LESS THAN 150mm LONG OR LESS THAN 20mm W. E. WHERE GRADIENTS ARE STEEPER THAN 1:50, STORM PATTERN GR. DS SHALL BE PROV. DED.
 GULLIES WITHIN SHARED SURFACE (BLOCK PAVED) AREAS SHALL BE FITTED WITH CROSS-HATCH COVERS SUCH AS CLARK DRAIN 150mmØ OR SIM. LAR.

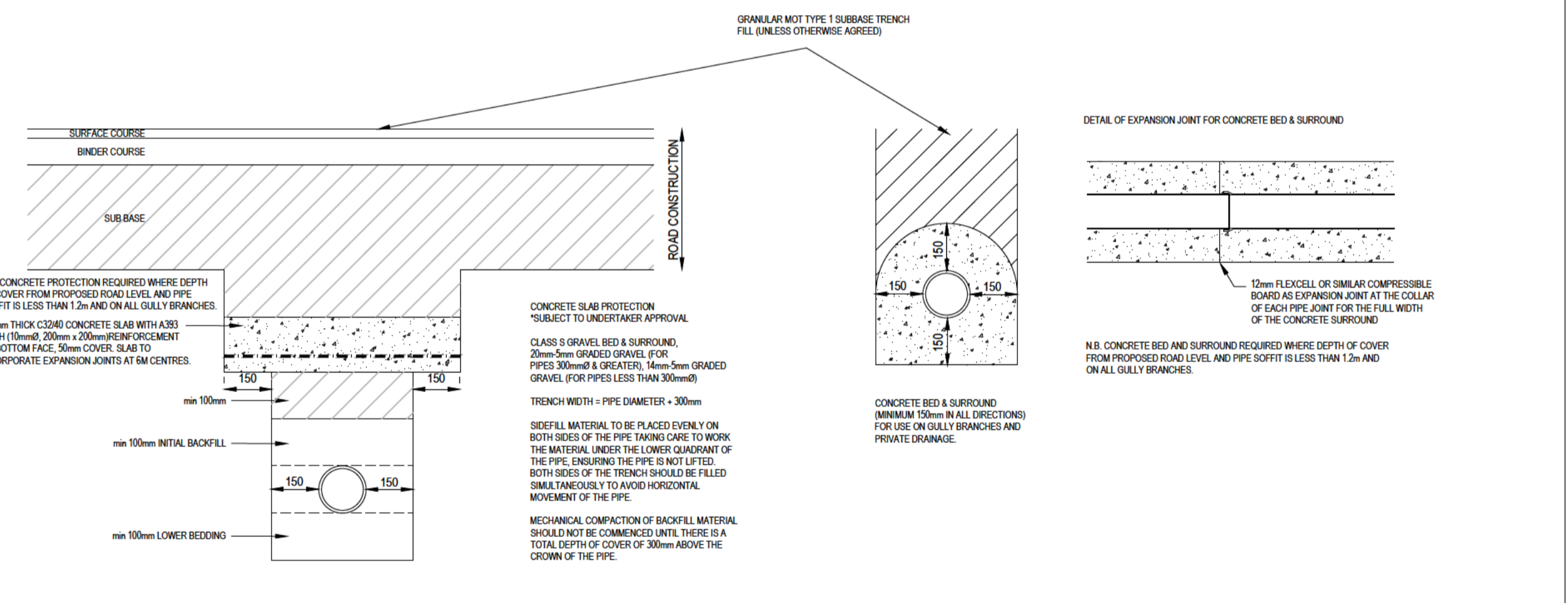
TYPICAL MANHOLE DETAIL - TYPE C (rectangular option)



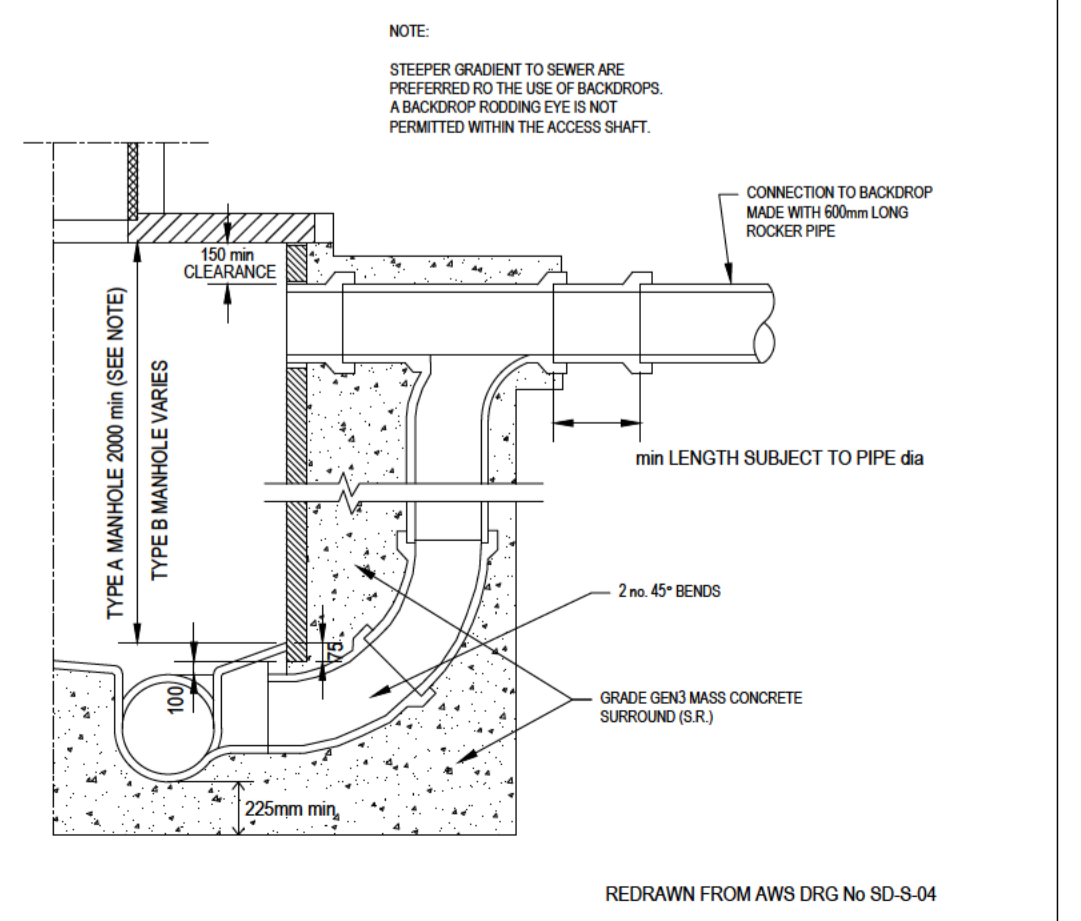
TYPICAL MANHOLE DETAIL - TYPE C (circular option)



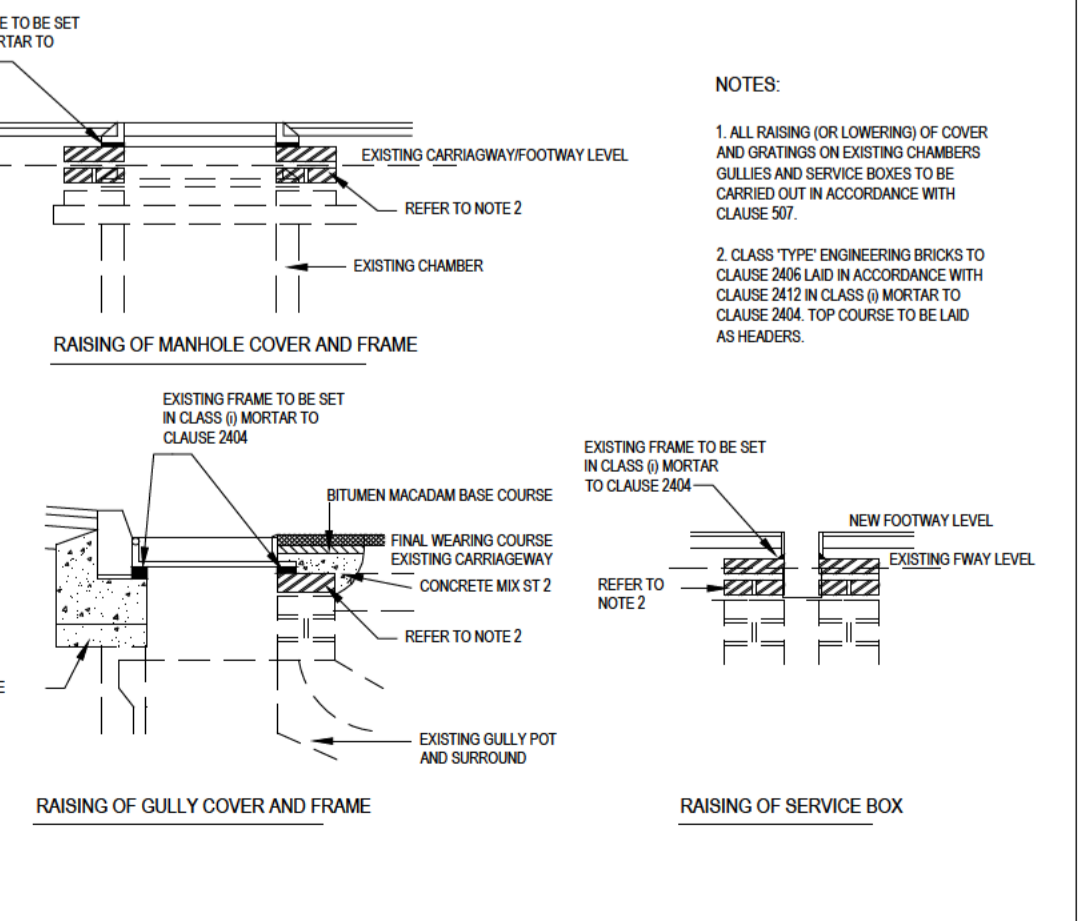
PIPE SURROUND DETAILS



SECTION THROUGH BACKDROP INLET



ADJUSTMENT OF COVERS & FRAMES



DO NOT SCALE. USE FIGURED DIMENSIONS ONLY. CHECK ON SITE AND ALL DISCREPANCIES TO BE REPORTED TO HALL infrastructure DESIGN LTD.

AMENDMENTS:			
REF.	DESCRIPTION.	DATE.	BY.

CLIENT:
M F Strawson Ltd

PROJECT:
Field Garth
Uxley
North Lincs

TITLE:
SSG and DCG Specification
Manhole, gully & bedding details

SCALE: N.T.S. **DATE:** April 2023 **SIZE:** A1

DRAWING No: 2303/12 **DRAWN BY:** **CHECKED BY:**



Silverdale, 116 Humberson Avenue,
Humberston, N E Lincs, DN36 4SU
Tel: 01472 814137 Mob: 07891 503179
email: hall.design@btinternet.com
website: www.hall-infrastructure-design.co.uk