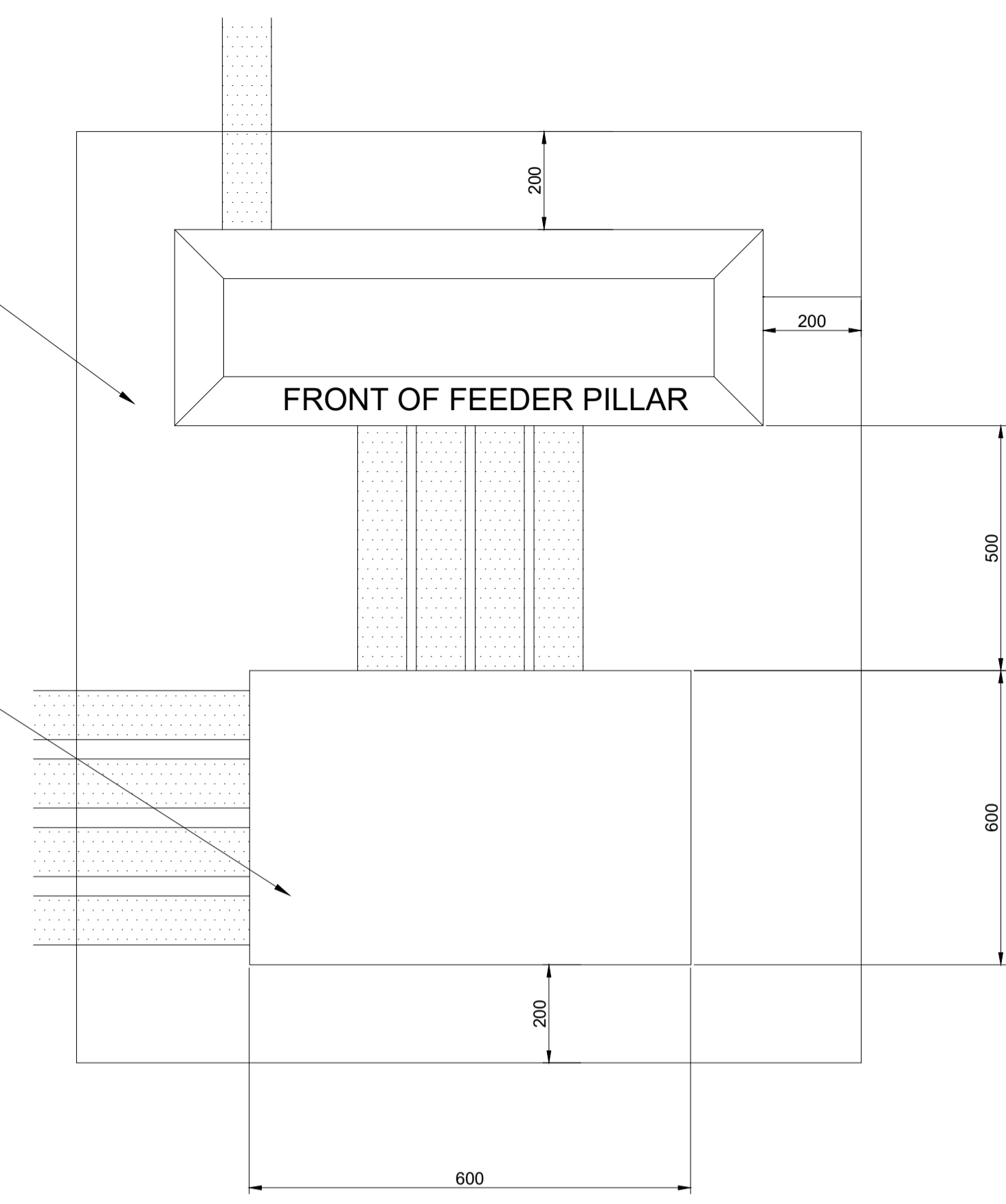


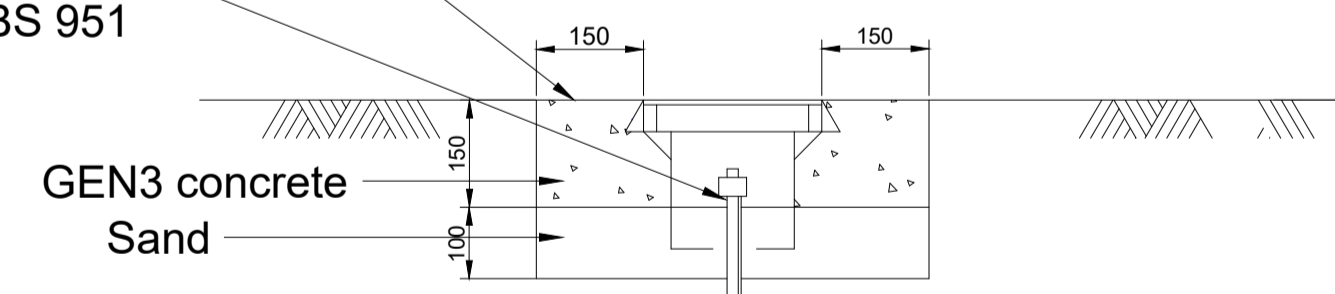
GEN3 concrete
U3 finish
minimum
surround
200mm

C250 frame & lid



Concrete or high performance polymer
earth rod inspection chamber

Warning notice to be attached in
accordance with BS 951



1200 x 16 diameter copper band earth rod

16mm² PVC insulated copper
cable connected to earth terminal
within feeder pillar

Orange 50mm diameter preformed
90° bend PVC duct for main earth
cable

Black 125mm diameter
preformed 90° bend PVC
duct for DNO cable *
duct to exit rear of feeder
pillar

* See DNO spec
for duct type

No. orange 100mm
diameter preformed 90°
bend PVC duct for outgoing
cables

NOTE
Ducts should be positioned so
that they line up with the gland
plates

TYPICAL FEEDER PILLAR
FOUNDATION ARRANGEMENT

TO BE PRINTED IN COLOUR
FOR APPROVAL



Billingham Reach Industrial Estate
Billingham
Stockton-on-Tees
Cleveland
TS23 1PX
enquiries@staintonlds.co.uk
www.staintonlds.co.uk
Tel: 01642 565533

Project **Burringham Road East
Roundabout, Scunthorpe**
Drawing **Proposed Electrical
Schematics & Standard Details
Sheet 5 of 6**

Drawn by Paul Brownbridge Date: 10-03-2026
Checked by Ian Harker Date: 25-03-2026
Drawing No. **SER-SLDS-ZZ-14-D-C-1405-PH1** Revision **P1**
Drawing Scale: N.T.S. Plot Scale: N.T.S.
Sheet size A1