

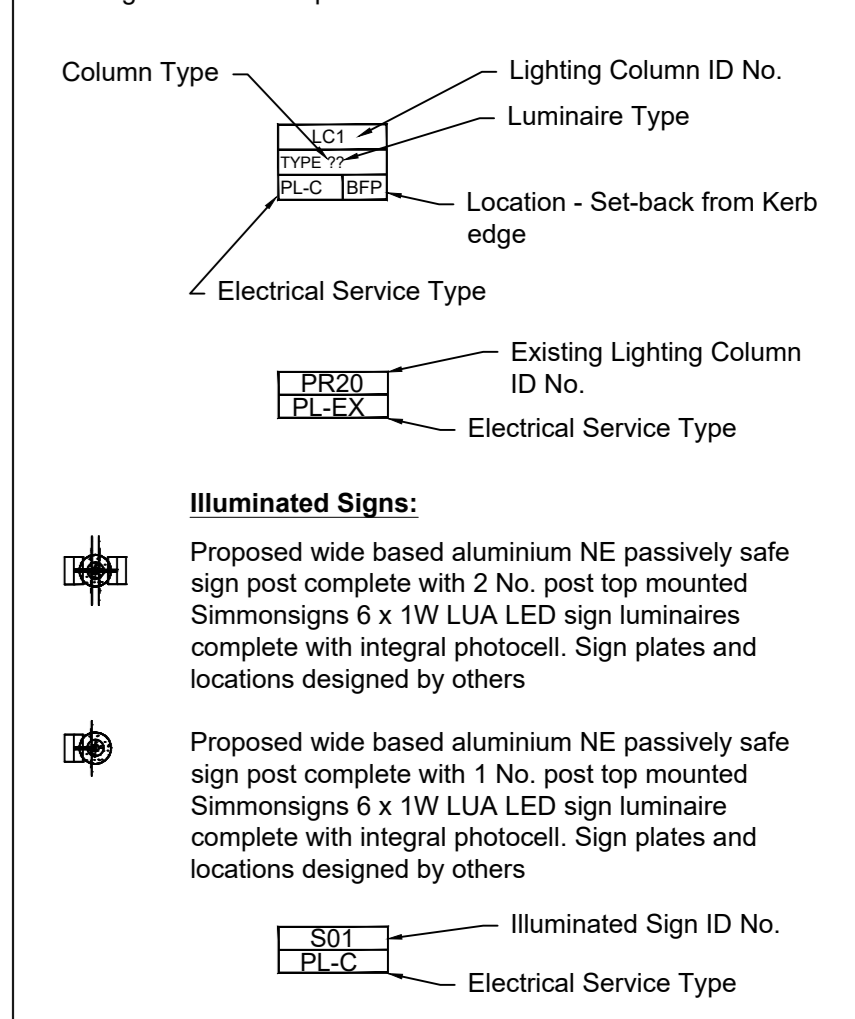
Ensure minimum clearance of 2.0m between column & Feeder Pillar B

Indicative route of NPG OH Line - to be diverted

Indicative route of NPG 300Wf Al/Cu Cable from Warp Farm Transformer to Feeder Pillar A & B

NOTE:
Area to south falls outside of the scheme extents. Future development of this land should allow for this lighting column as part of the package of works to ensure approach to roundabout is adequately illuminated in accordance with ILP PLG02.

- LIGHTING KEY**
- Column & Mounting Types:**
- Proposed 10m nominal mounting height column, fitted with post top mounted luminaire installed at 0 degrees inclination (column and luminaire type varies - see below)
 - Proposed 8m nominal mounting height column, fitted with post top mounted luminaire installed at 0 degrees inclination (column and luminaire type varies - see below)
 - Existing lighting column and luminaire to remain
- Column Types:**
- Type 1: 10m Passively Safe Lighting Column to classification 70-NE-B-S-SE-MD-0
 - Type 2: 10m Passively Safe Lighting Column to classification 70-NE-D-S-NS-MD-0
 - Type 3: 10m galvanised tubular steel Lighting Column complete with Thermoplastic root protection system
 - Type 4: 8m galvanised tubular steel Lighting Column complete with Thermoplastic root protection system
- Luminaire Types:**
- Type A: Urbs AMPERA MAXI 5393 Flat glass 100 LEDs @ 400mA WW 730 230V 00-53-426 550702 Luminaire Charge Code - 42 0123 0000 100
 - Type B: Urbs AMPERA MAXI 5304 Flat glass 80 LEDs @ 700mA WW 730 230V 00-53-426 550372 Luminaire Charge Code - 42 0178 0000 100
 - Type D: Urbs AMPERA MAXI 5393 Flat glass 80 LEDs @ 700mA WW 730 230V 00-53-426 550702 Luminaire Charge Code - 42 0178 0000 100
 - Type E: Urbs AXIA 3.3 5279 Integrated lenses 48 OSLO SQUARE QUANT@600mA WW 730 230V 02-58-000 429344 Luminaire Charge Code - 42 0080 0000 100
 - Type F: Urbs AXIA 3.2 5267 Integrated lenses 32 OSLO SQUARE QUANT@600mA WW 730 230V 02-58-000 430092 Luminaire Charge Code - 42 0059 0000 100
- All luminaires to be fitted with 7-Pin NEMA socket
- Photocell Spec:** Lucy Zodian S86 3-Pin NEMA photocell complete with 20/20 Lux switching regime
Photocell Charge Code: 94 0000 0003 100
- Dimming Profile:** Not required



- SIGNIFICANT SAFETY HAZARDS**
- Hazard H1 Working in close proximity to live traffic on carriageway
 - Hazard H2 Working in close proximity to buried services and electricity
 - Hazard H3 Erection/removal of columns in vicinity of live carriageway
 - Hazard H4 Working in vicinity of embankments and steep gradients
 - Hazard H5 Opening feeder pillar doors
 - Hazard H6 Risk of electric shock
 - Hazard H7 Working in close proximity to overhead services

TO BE PRINTED IN COLOUR

FOR APPROVAL

Rev	By	Date	Description
P1	PS	10/03/2026	Client issued revised layout
P0	PS	10/03/2026	Preparatory draft issue for Client comment

Stainton Lighting Design Services

Billingham Reach Industrial Estate
Billingham
Stockton-on-Tees
Cleveland
TS23 1PX
enquiries@staintonltd.co.uk
www.staintonltd.co.uk
Tel: 01642 565533

Project: **Burringham Road East Roundabout, Scunthorpe**
Drawing: **Proposed Highway Lighting - Temporary Layout Sheet 1 of 2**

Drawn by: Paul Brownbridge Date: 10-03-2026
Checked by: Ian Harker Date: 25-03-2026
Drawing No: SER-SLDS-ZZ-13-D-C-1301-PH1 P1
Drawing Scale: 1:1000 Plot Scale: 1:500

