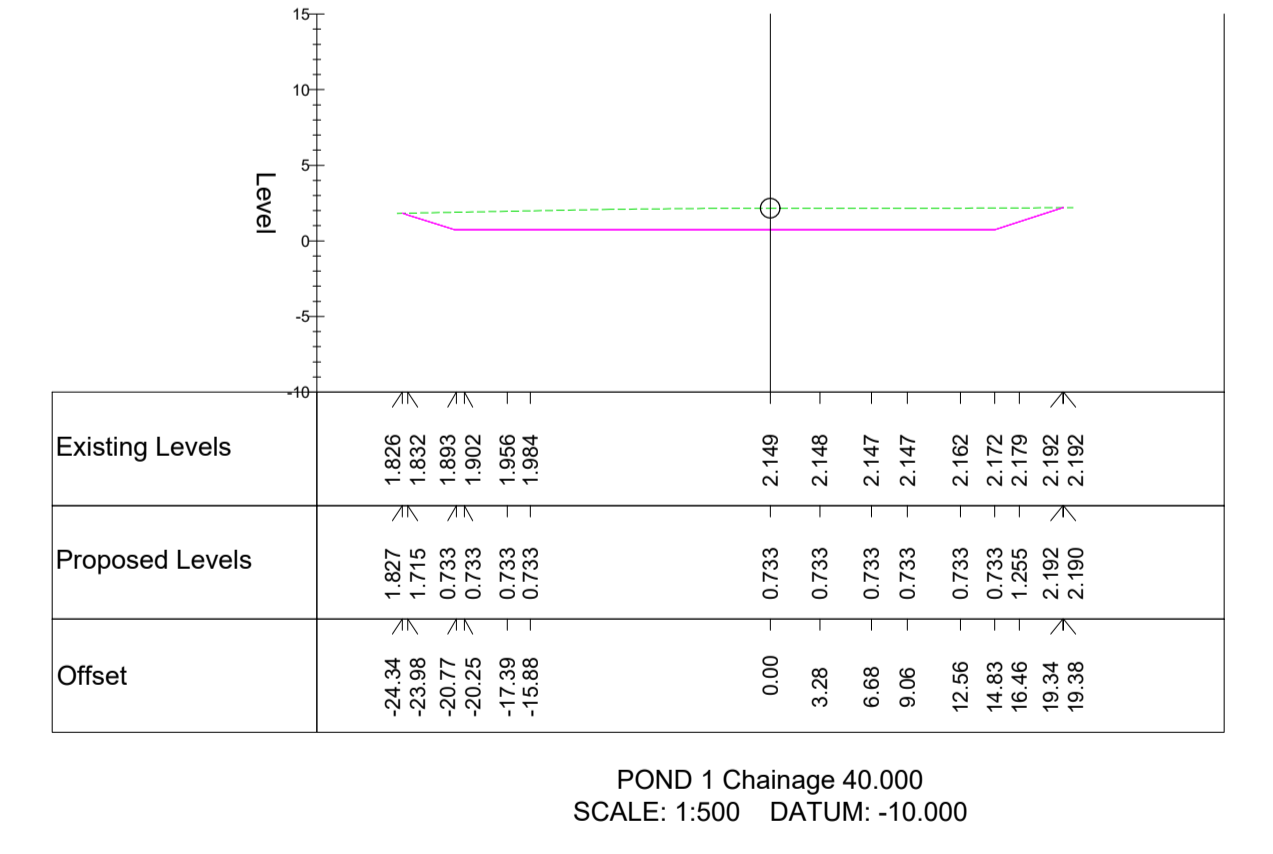
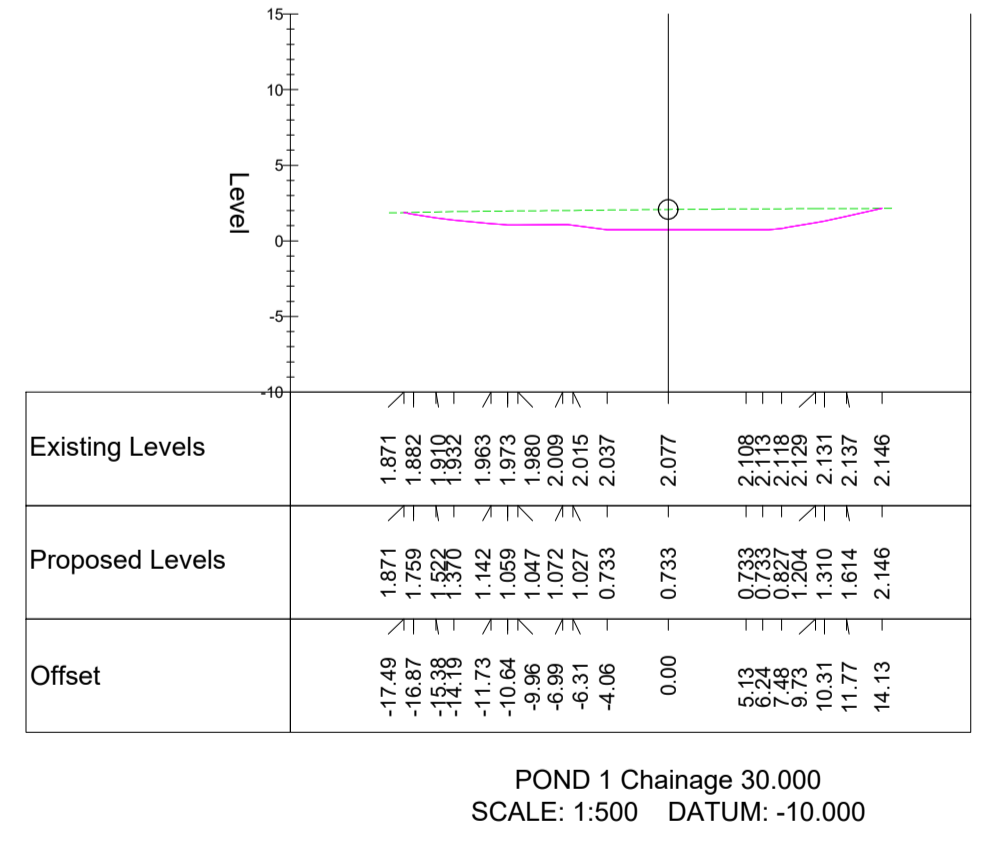
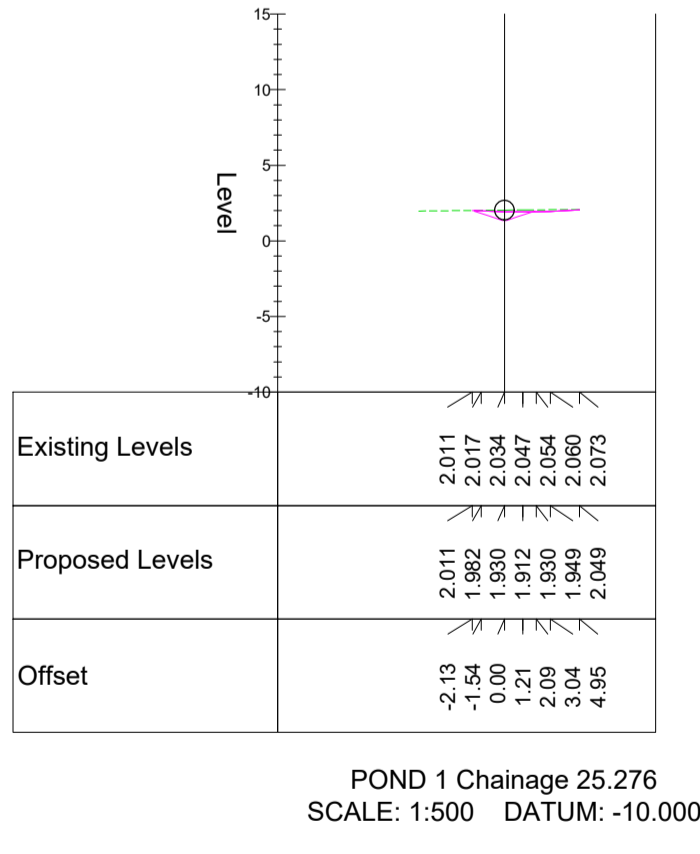
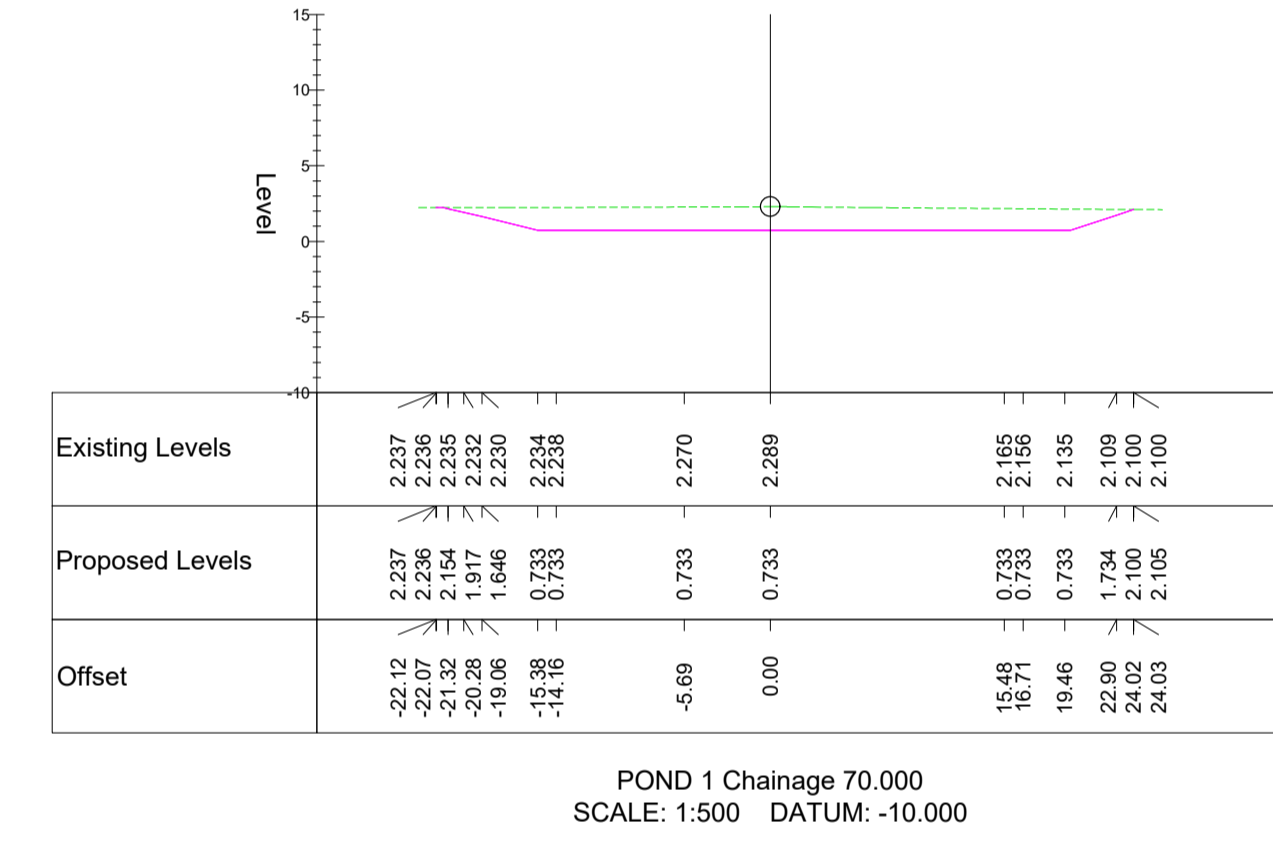
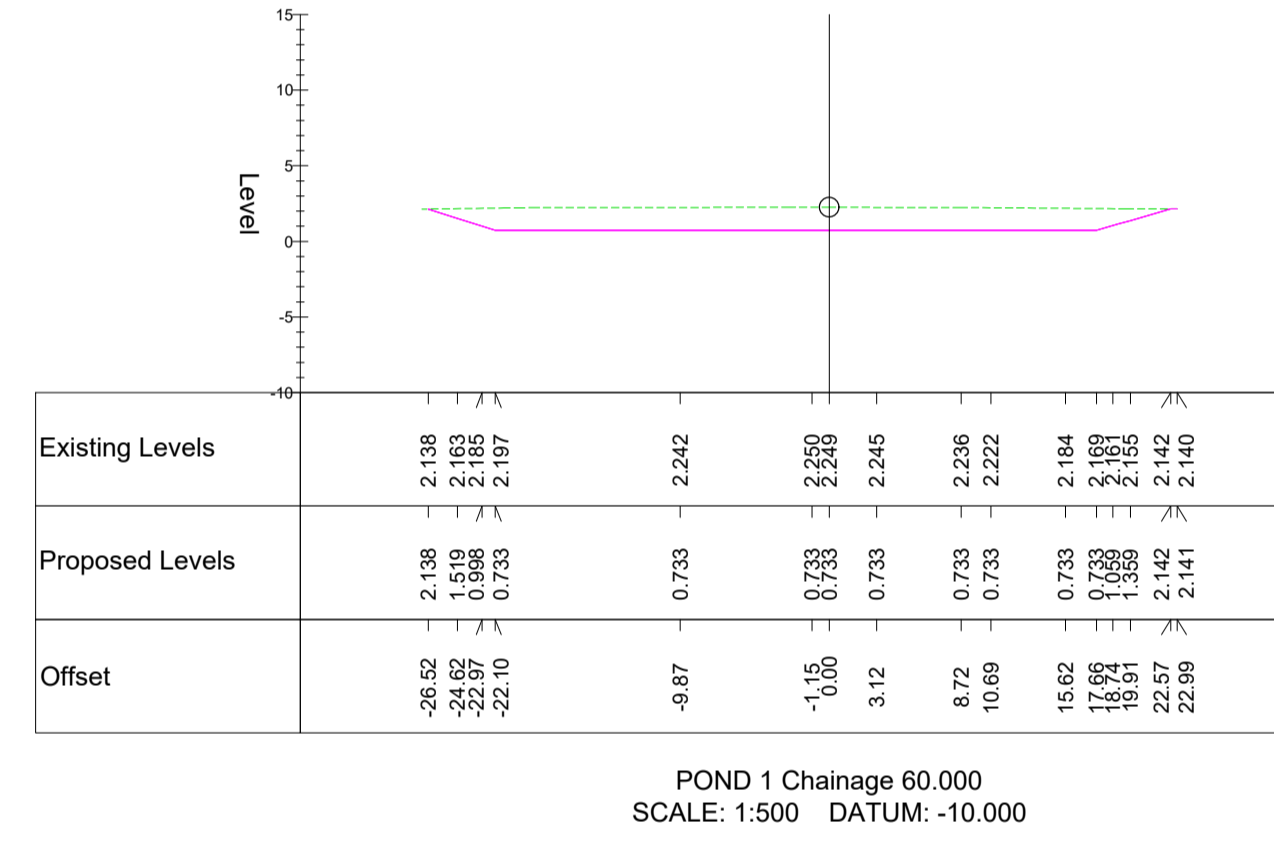
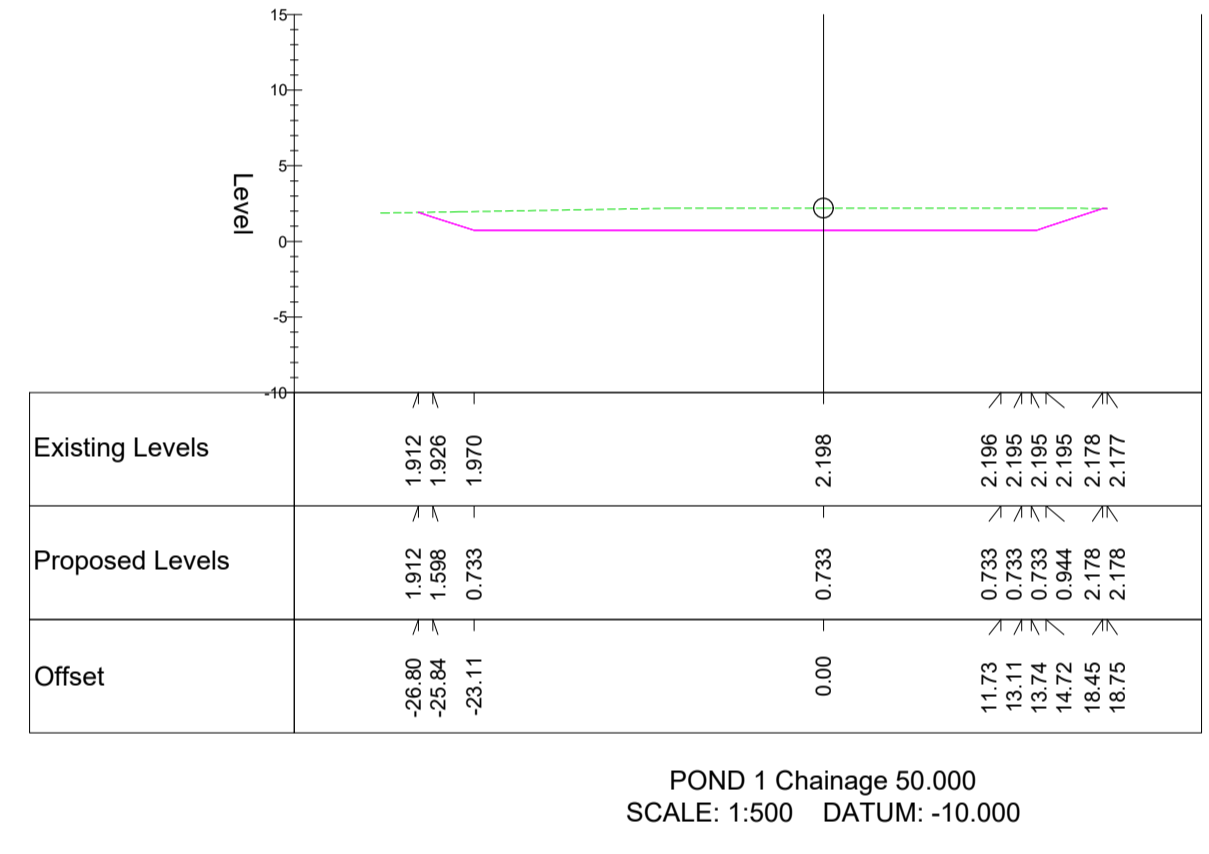
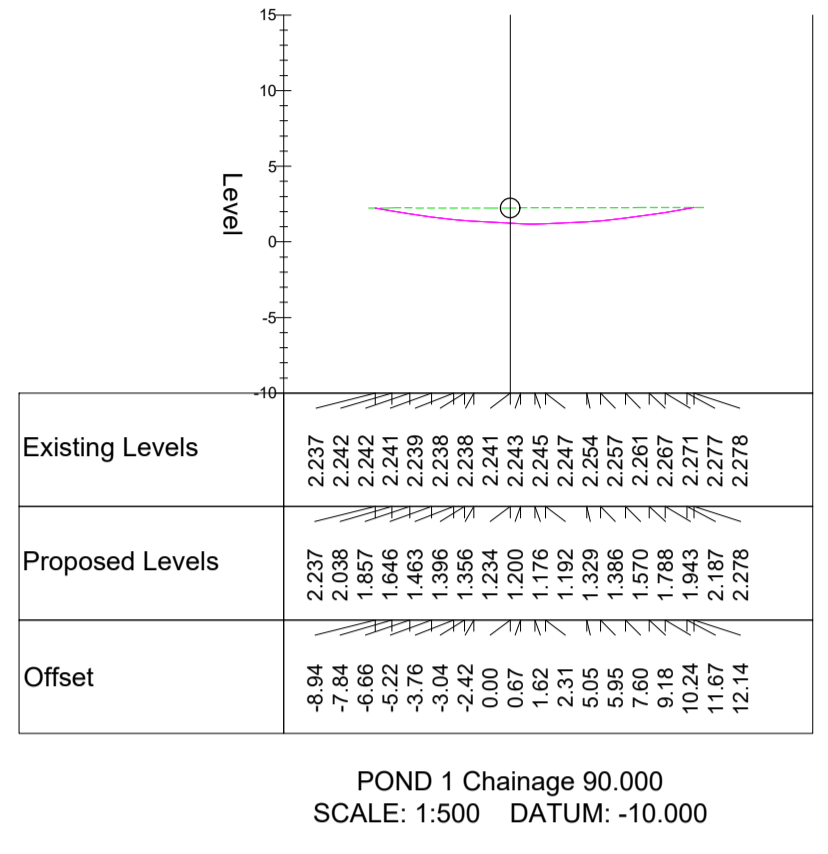
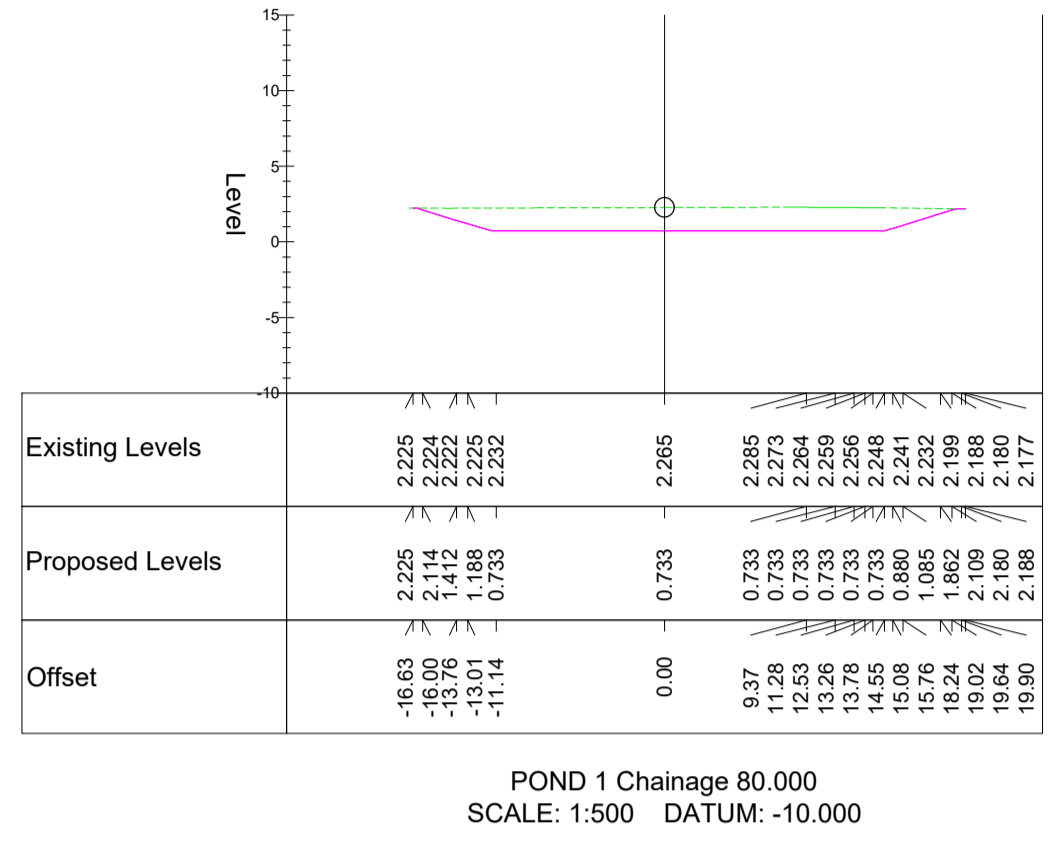


- GENERAL NOTES:**
- THE NOTES ARE INTENDED TO AUGMENT DRAWINGS AND SPECIFICATIONS. WHERE CONFLICT OF REQUIREMENTS EXIST THE ORDER OF PRECEDENCE SHALL BE AS SHOWN IN THE SPECIFICATION. OTHERWISE THE STRICTEST PROVISION SHALL GOVERN.
  - THE DRAWING IS TO BE READ IN CONJUNCTION WITH ALL OTHER RELEVANT ENGINEERS AND ARCHITECTS DRAWINGS.
  - DRAWINGS NOT TO BE SCALED. ALL DIMENSIONS TO BE CHECKED ON SITE BY CONTRACTOR. ANY DISCREPANCIES TO BE NOTIFIED TO THE ENGINEER AND FURTHER INSTRUCTIONS OBTAINED BEFORE WORK COMMENCED.
  - ALL LEVELS ARE IN METRES AOD (ABOVE ORDNANCE DATUM) UNLESS NOTED OTHERWISE.
  - ALL WORKS TO BE UNDERTAKEN IN COMPLIANCE WITH BS 8000 FOR WORKMANSHIP ON BUILDING SITES.
  - ABBREVIATIONS: MH = MANHOLE  
CL = COVER LEVEL  
IL = INVERT LEVEL  
SW = SURFACE WATER  
N1-10/S = SWALE  
N1-10MH = SURFACE WATER CHAMBERS.  
DS = SURFACE WATER DEMARCATION CHAMBER  
CONC = CONCRETE  
DWG = DRAWING
  - ALL EARTHWORKS SHALL BE UNDERTAKEN IN FULL COMPLIANCE WITH THE SPECIFICATION FOR HIGHWAYS WORKS MCW SERIES 600.
  - THE CONTRACTOR MUST ENSURE THAT THE WHOLE WORKS COMPLY BOTH WITH THE SPECIFICATION AND THE DRAWINGS WHICH ARE SUBJECT TO APPROVAL BY THE RELEVANT AUTHORITIES.
  - IF ANY DISCREPANCIES EXIST BETWEEN THE SPECIFICATION AND THE DRAWINGS, THE ENGINEER SHALL BE NOTIFIED IMMEDIATELY.
  - THE CONTRACTOR SHALL NOTIFY THE APPROPRIATE AUTHORITY PRIOR TO COMMENCEMENT OF EACH STAGE OF THE WORK FOR THEIR REPRESENTATIVE TO CARRY OUT INSPECTION TO ENSURE COMPLIANCE WITH THEIR SPECIFICATION AND APPROVED DETAILS. IF ANY SUCH REQUESTS OR INSTRUCTIONS CAUSE CONFLICT WITH THE SPECIFICATION THE CONTRACTOR SHALL IMMEDIATELY NOTIFY THE ENGINEER.
  - THIS DRAWING TO BE READ IN CONJUNCTION WITH THE DRAWING: LLHI-AWP-01-05-DR-0026 TO 0027



THIS DRAWING TO BE READ IN CONJUNCTION WITH AWP DRAWINGS:

LLHI-AWP-01-05-DR-D-0011 TO 0019	M181 JUNCTION-DRAINAGE PIPE SCHEDULES
LLHI-AWP-01-05-DR-D-0020 TO 0029	M181 JUNCTION-DRAINAGE MANHOLE SCHEDULES
LLHI-AWP-01-05-DR-D-0030 TO 0039	M181 JUNCTION-DRAINAGE DIVERSION OF EXISTING DITCHES LAYOUT AND STANDARD DETAILS
LLHI-AWP-01-05-DR-D-0040 TO 0049	M181 JUNCTION-DRAINAGE ATTENUATION PONDS LAYOUT AND CONSTRUCTION DETAILS
LLHI-AWP-01-05-DR-D-0050 TO 0059	M181 JUNCTION-DRAINAGE FLOW CONTROL CONSTRUCTION DETAILS
LLHI-AWP-01-05-DR-D-0060 TO 0069	M181 JUNCTION-DRAINAGE STANDARD DETAILS

T1	FIRST ISSUE	30.09.20	TV	SPG	JG
Rev	Description	Date	By	Chk	App



<p>York Office Omega 2 Monks Cross Drive York YO32 9GZ</p> <p>T. 01904 611594 www.alanwood.co.uk</p>	<p>Consulting Civil &amp; Structural Engineers Project Managers Building Surveyors</p> <p>Hull Lincoln London Scarborough Sheffield Leeds</p> <p>T. 01482 442138 T. 01522 300210 T. 02071 860761 T. 01723 865484 T. 01142 440077 T. 01135 311098</p>
--------------------------------------------------------------------------------------------------------------------------	----------------------------------------------------------------------------------------------------------------------------------------------------------------------------------------------------------------------------------------------------------------------------------------------------------

Project: LINCOLNSHIRE LAKES, SCUNTHORPE M181/B1450 HIGHWAY WORKS

Client:

Drawing: M181 Junction - Drainage layout -Attenuation Pond 1/2 Constriction Details- Sheet 3

Role: CIVIL ENGINEER

Drawing Status: TENDER

Job. no. 43972 Scale@ A1: 1:500 Rev. T1

Project Originator Volume Level Type Role Number  
LLHI - AWP - 01 - 05 - DR - D - 0044