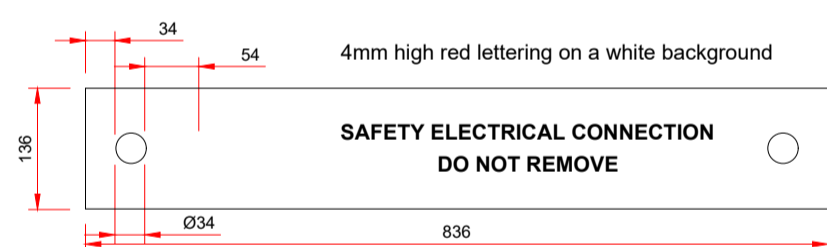


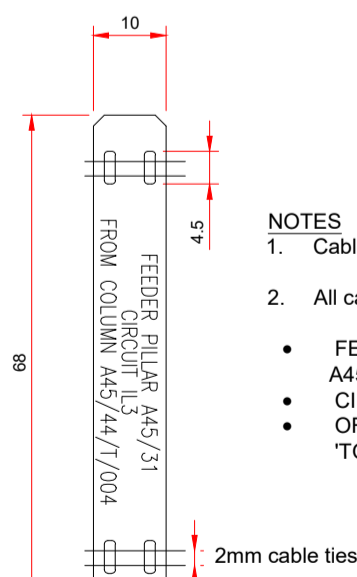
TYPICAL LAYOUT OF IP31 FUSED ISOLATORS IN THE COMPARTMENT OF LIGHTING COLUMNS



NOTES

- Termination warning labels are:
 - Manufactured from rigid PVC, minimum thickness 2mm
 - The label should be suspended on the equipotential bond between the termination gland plate and the earth stud
 - Installed irrespective of any other labels provided by the regional electricity company
 - Clearly legible following installation

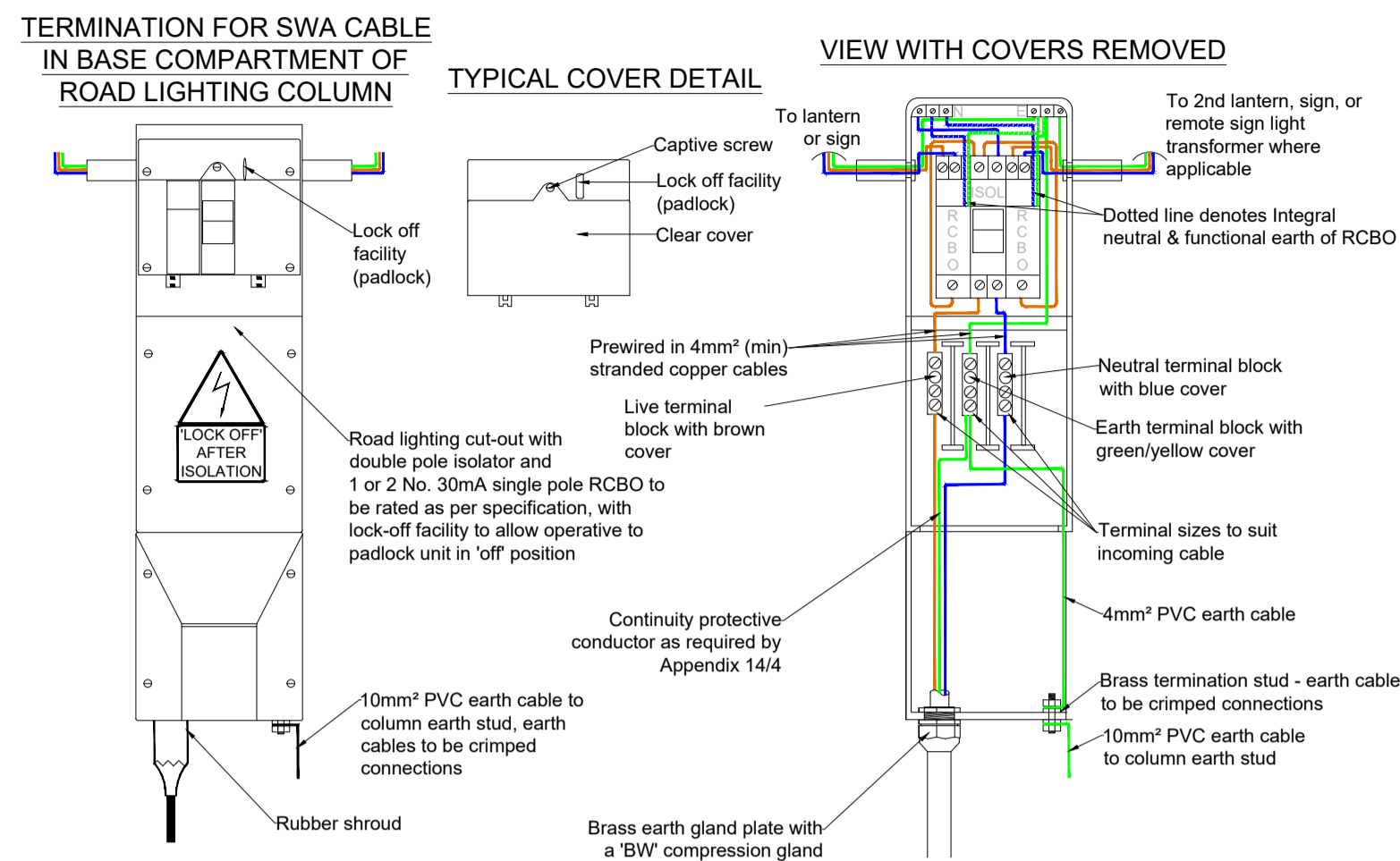
TERMINATION WARNING LABEL



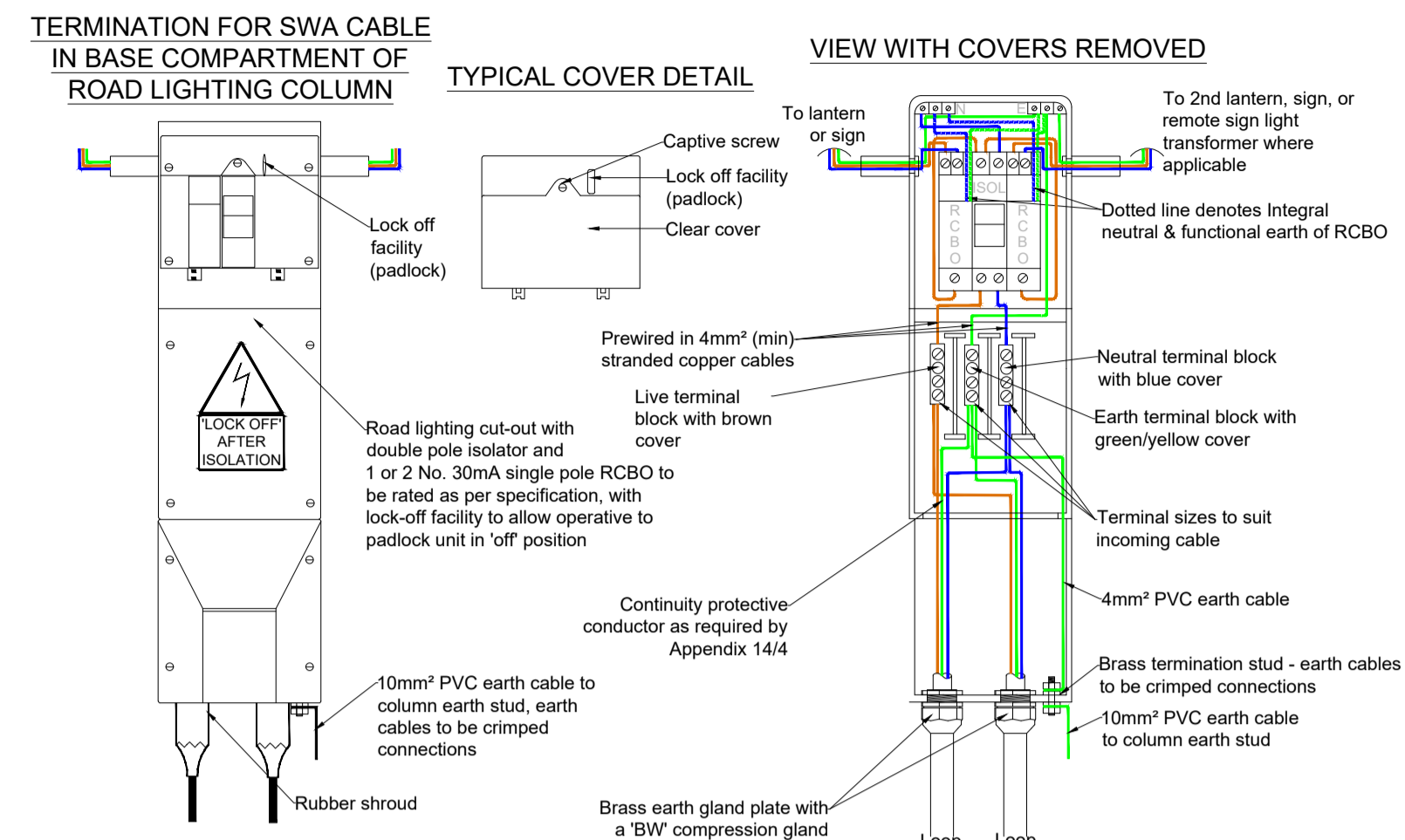
CABLE LABEL

NOTES

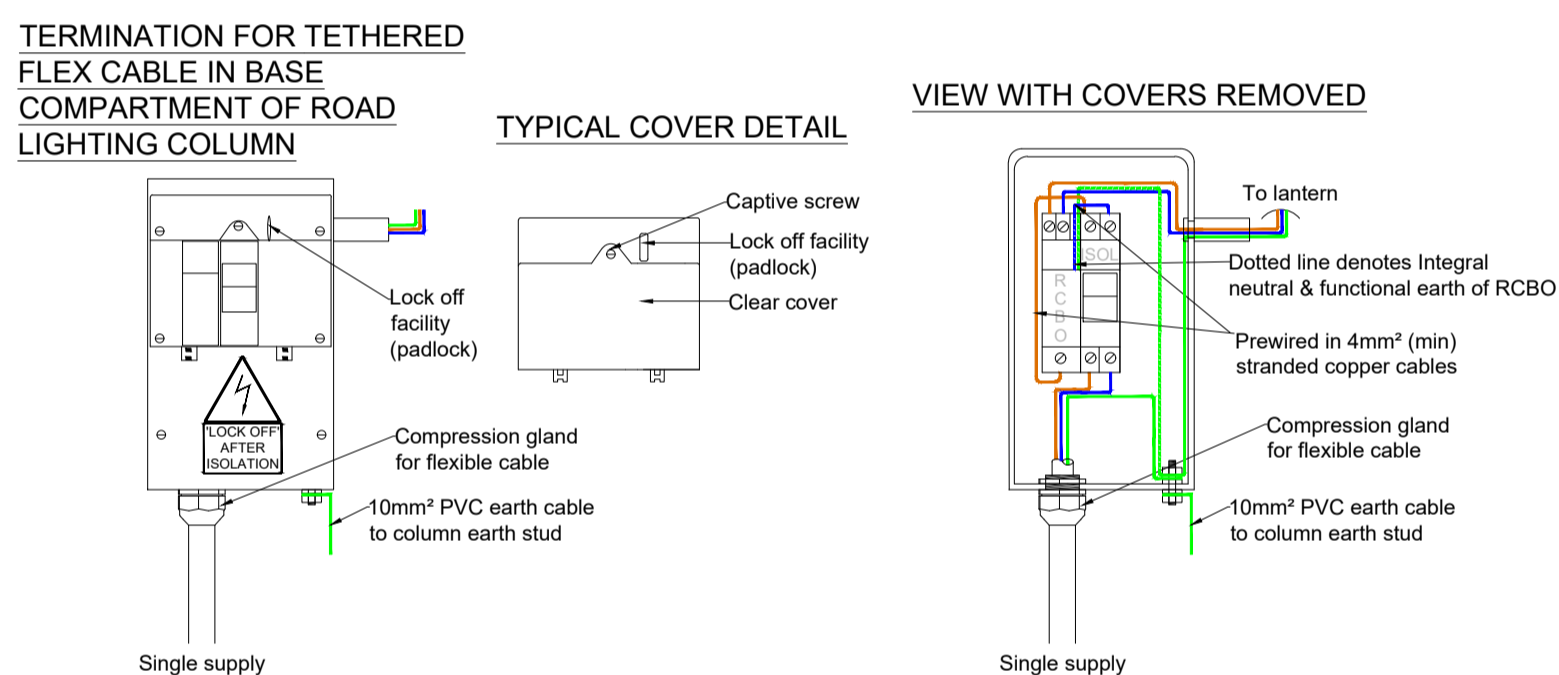
- Cable labels shall be as specified in Appendix 14/4
- All cables to indicate the origin and destination and include the following:
 - FEEDER PILLAR REFERENCE NUMBER, e.g 'FEEDER PILLAR A45/31'
 - CIRCUIT REFERENCE NUMBER, e.g 'CIRCUIT IL3'
 - ORIGIN OR DESTINATION, e.g 'FROM COLUMN A45/144/T/004' OR 'TO SIGN A45/1/A/04'



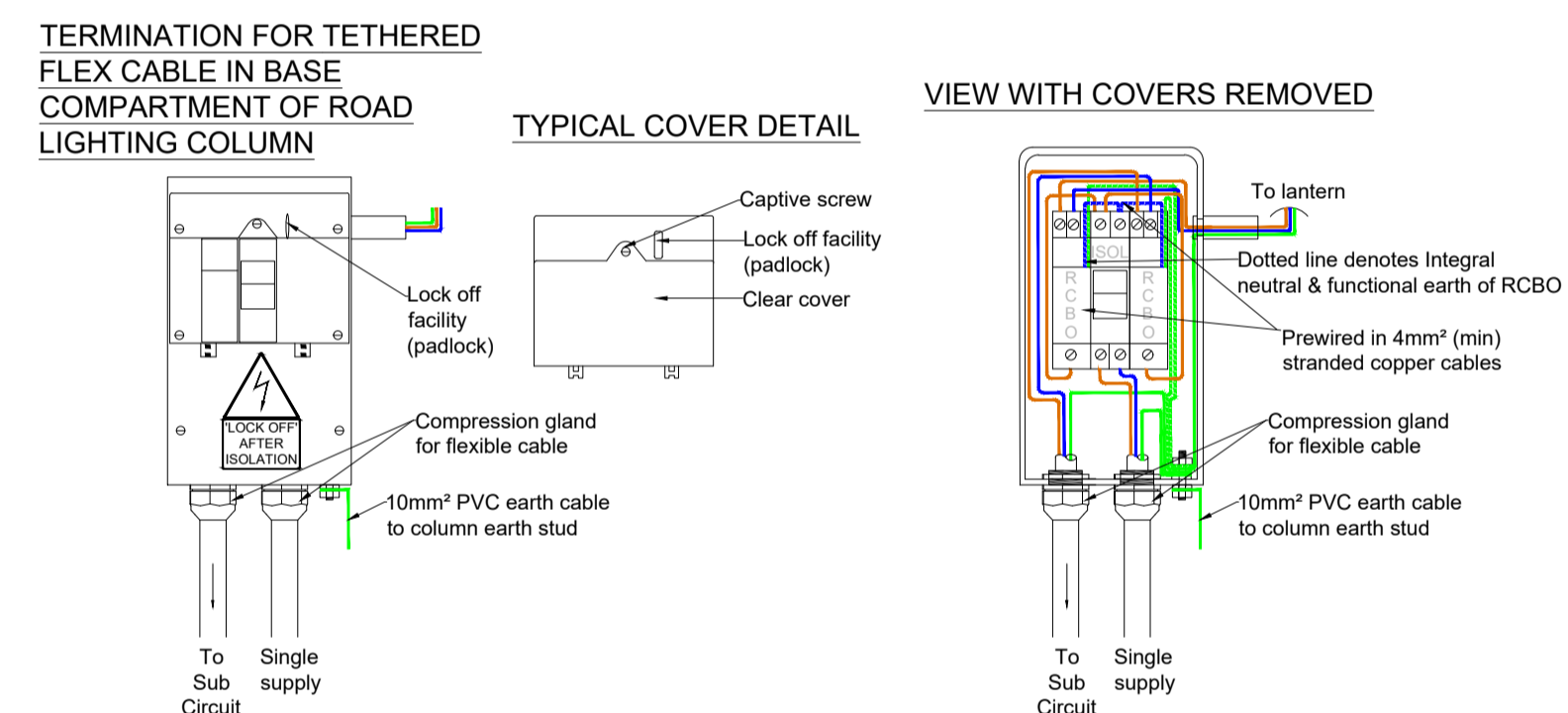
TERMINATION OF CABLES WITH SINGLE SUPPLY AND 1 RCBO PROTECTED UPWARD CIRCUIT (TYPE T1)
TERMINATION OF CABLES WITH SINGLE SUPPLY AND 2 RCBO PROTECTED UPWARD CIRCUITS (TYPE T1[T])



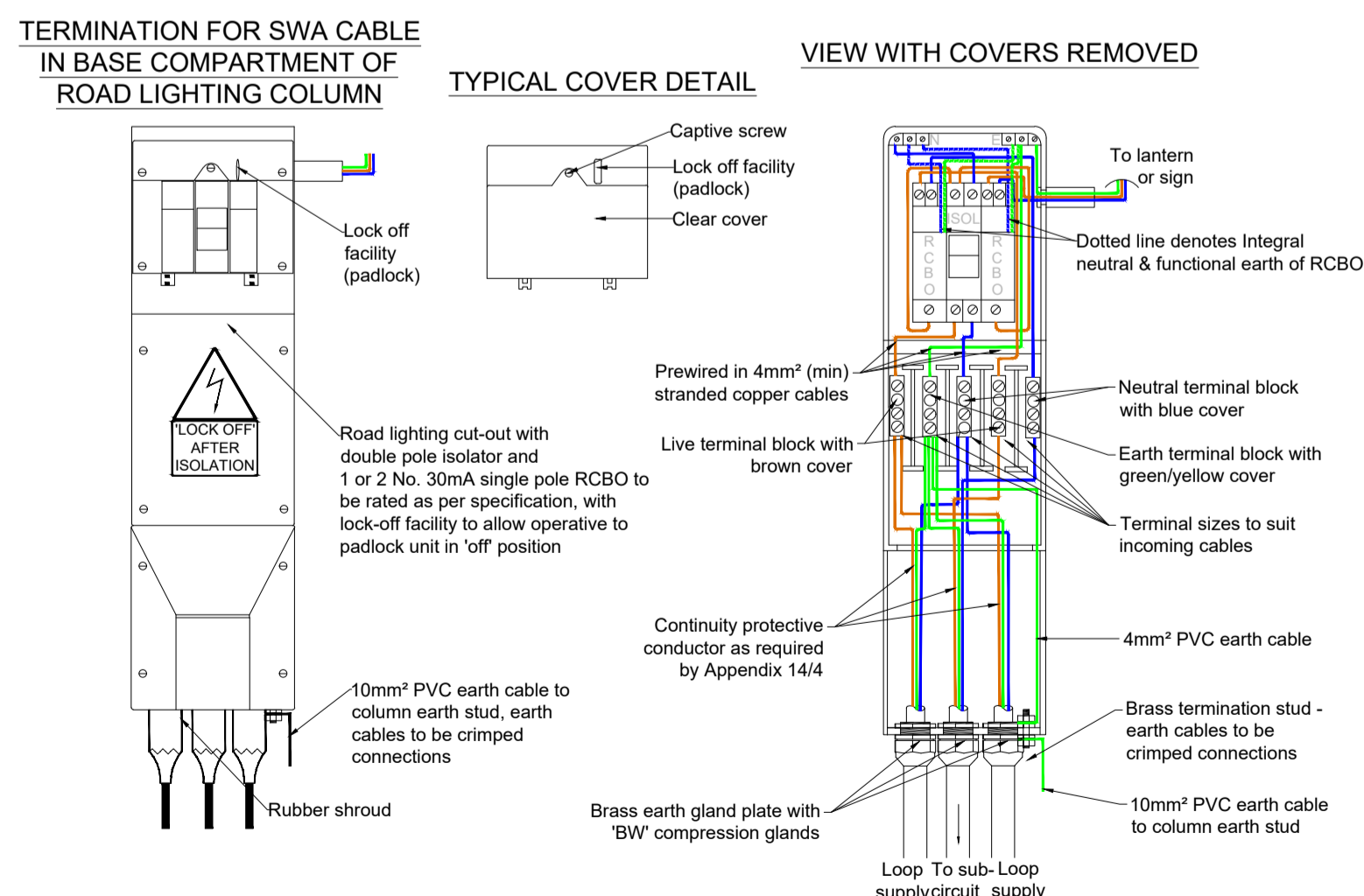
TERMINATION OF CABLES WITH LOOPED SUPPLY AND 1 RCBO PROTECTED UPWARD CIRCUIT (TYPE T2)
TERMINATION OF CABLES WITH LOOPED SUPPLY AND 2 RCBO PROTECTED UPWARD CIRCUITS (TYPE T2[T])



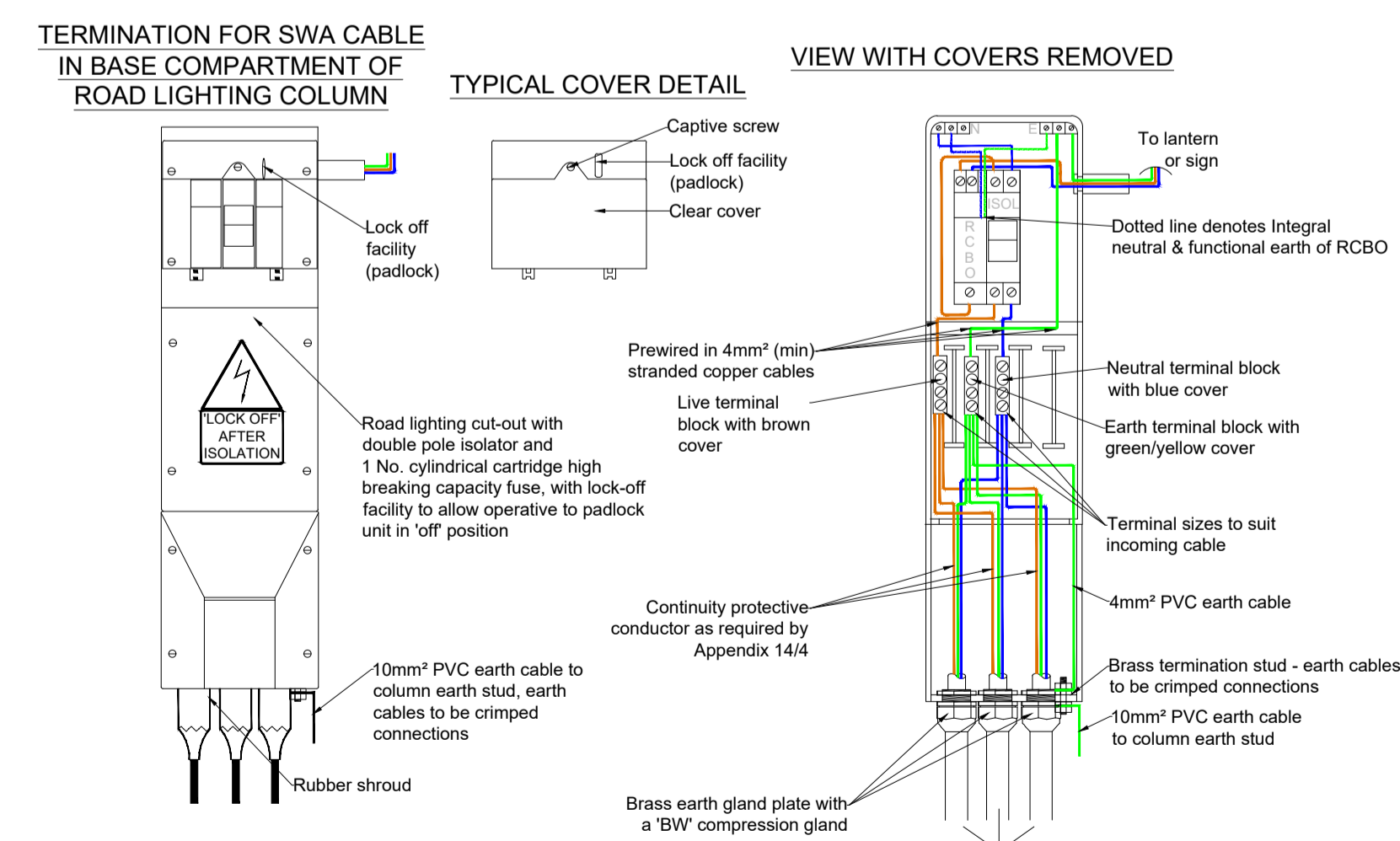
TERMINATION OF CABLES WITH SINGLE SUPPLY AND 1 RCBO PROTECTED UPWARD CIRCUIT (TYPE T1.NE)



TERMINATION OF CABLES WITH SINGLE SUPPLY WITH 1 RCBO PROTECTED UPWARD CIRCUIT AND 1 RCBO PROTECTED DOWNWARD SPUR CIRCUIT (TYPE T3.NE)



TERMINATION OF CABLES WITH LOOPED SUPPLY WITH 1 RCBO PROTECTED UPWARD CIRCUIT AND 1 RCBO PROTECTED DOWNWARD SPUR CIRCUIT (TYPE T4)



TERMINATION OF CABLES WITH TRIPLE LOOPED SUPPLY WITH 1 RCBO PROTECTED UPWARD CIRCUIT (TYPE T5)

TO BE PRINTED IN COLOUR

FOR COMMENT

Revision	By	Date	Description
P1	PB	25/03/26	Client issued revised layout
P0	PB	16/03/26	Preliminary draft issue for Client comment



Billingham Reach Industrial Estate
 Billingham
 Stockton-on-Tees
 Cleveland
 TS23 1PX
 enquiries@staintonlds.co.uk
 www.staintonlds.co.uk
 Tel: 01642 565533

Project **Burringham Road East Roundabout, Scunthorpe**
 Drawing **Proposed Electrical Schematics & Standard Details**
 Sheet 2 of 3

Drawn by	Paul Brownbridge	Date:	16-03-2026
Checked by	Ian Harker	Date:	25-03-2026
Drawing No.	SER-SLDS-ZZ-14-D-C-1402-PH2	Revision	P1
Drawing Scale:	N.T.S.	Plot Scale:	N.T.S.