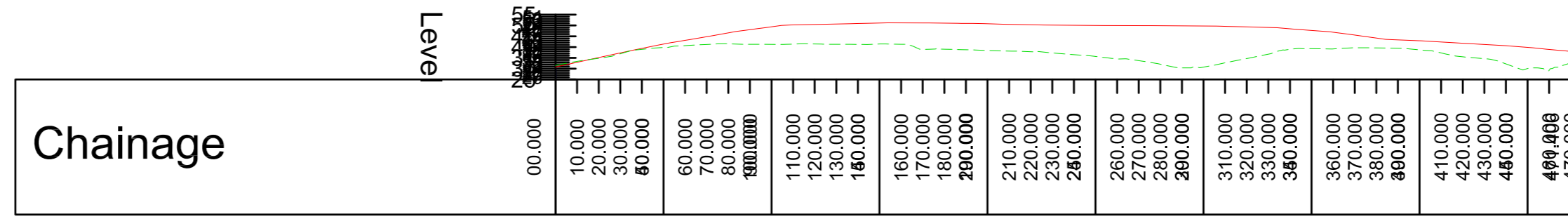
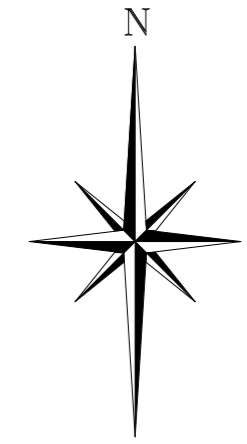
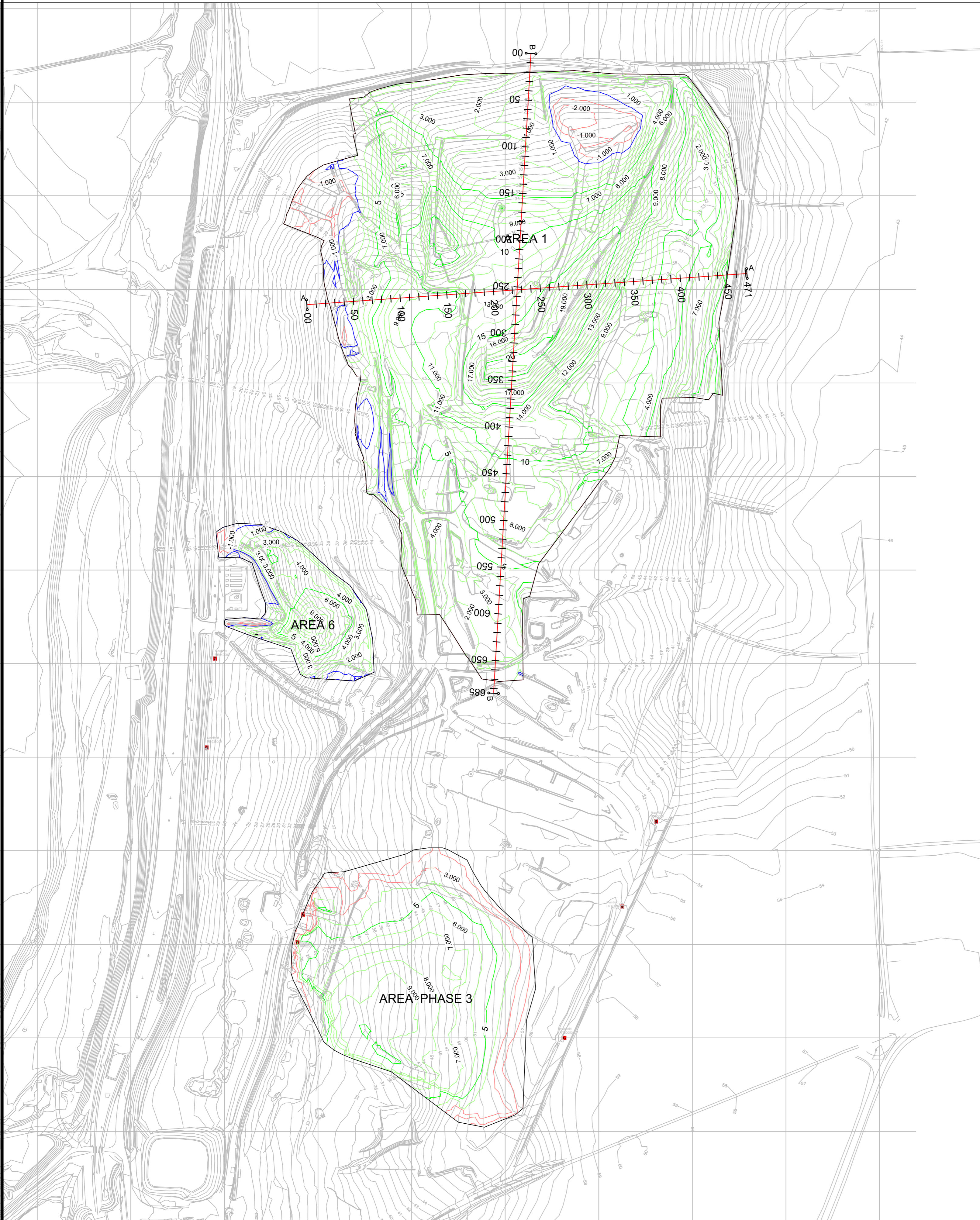
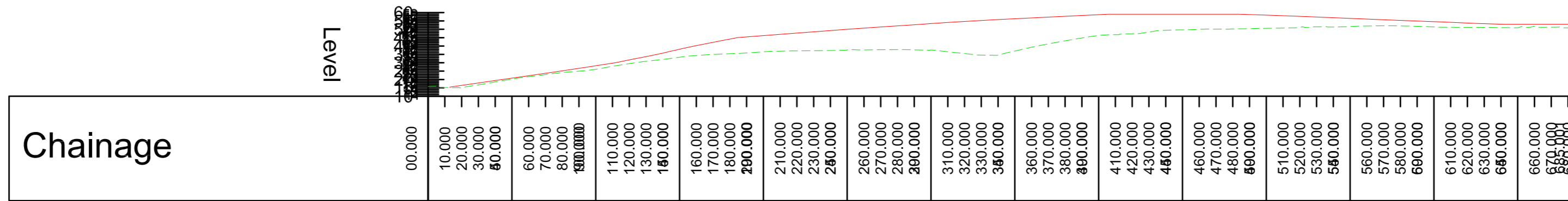


A A SECTION - LONGSECTION
SCALE: H 1:500,V 1:500. DATUM: 25.000



B B SECTION - LONGSECTION
SCALE: H 1:500,V 1:500. DATUM: 10.000



ROXBY REMAINING VOID JANUARY 2026

AREA 1
Volume
Base Surface ROXBY 8th JANUARY 2026
Comparison Surface TOR
Cut Factor 1.000
Fill Factor 1.000

Cut volume (unadjusted) 11968.598 Cu. M.
Fill volume (unadjusted) 1335542.536 Cu. M.
Net volume (unadjusted) 1323573.938 Cu. M.<Fill>

AREA 6
Volume
Base Surface ROXBY 8th JANUARY 2026
Comparison Surface TRIMMED TO CONTOURS
Cut Factor 1.000
Fill Factor 1.000

Cut volume (unadjusted) 951.865 Cu. M.
Fill volume (unadjusted) 50699.325 Cu. M.
Net volume (unadjusted) 49747.459 Cu. M.<Fill>

PHASE 3
Volume
Base Surface PHASE3
Comparison Surface TOR
Cut Factor 1.000
Fill Factor 1.000

Cut volume (adjusted) 0.000 Cu. M.
Fill volume (adjusted) 305370.579 Cu. M.
Net volume (adjusted) 305370.579 Cu. M.<Fill>

REMAINING VOID 1,691.611m³
With additional 112,000m³/ of void due to the excavation

TOTAL REMAINING VOID 1,803.611m³

Reproduced from Superplan Data © (scale-free) by permission of Ordnance Survey © on behalf of The Controller of Her Majesty's Stationery Office. © Crown copyright 2006 all rights reserved. Licence number 10005438.

REV.	DATE	DRAWN	DESCRIPTION

THIS INFORMATION IS CONFIDENTIAL AND THE PROPERTY OF BIFFA WASTE SERVICES LTD. AND IS RELEASED ON CONDITION THAT NONE OF THE INFORMATION SHALL BE DISCLOSED TO ANY THIRD PARTY OR REPRODUCED IN WHOLE OR PART WITHOUT THE PRIOR CONSENT IN WRITING OF BIFFA WASTE SERVICES LTD.



Biffa Waste Services Ltd
Poplars Landfill Site
Lichfield Road
Cannock
Staffordshire
WS11 8NQ
Mob: 07834092155
e-mail: michelle.saunders@biffa.co.uk

PROJECT	ROXBY LANDFILL SITE	DRAWN	MLS
LOCATION	ROXBY LANDFILL SITE	DATE	08/01/26
DRAWING TITLE	ROXBY REMAINING VOID JANUARY 2026	SCALE(S)	1:2500 @ A1
DRAWING No.	R06	COMPUTER REF.	R2036400